

# Draft Plan 7916/2(d)

115°57'0.000"E

116°6'0.000"E

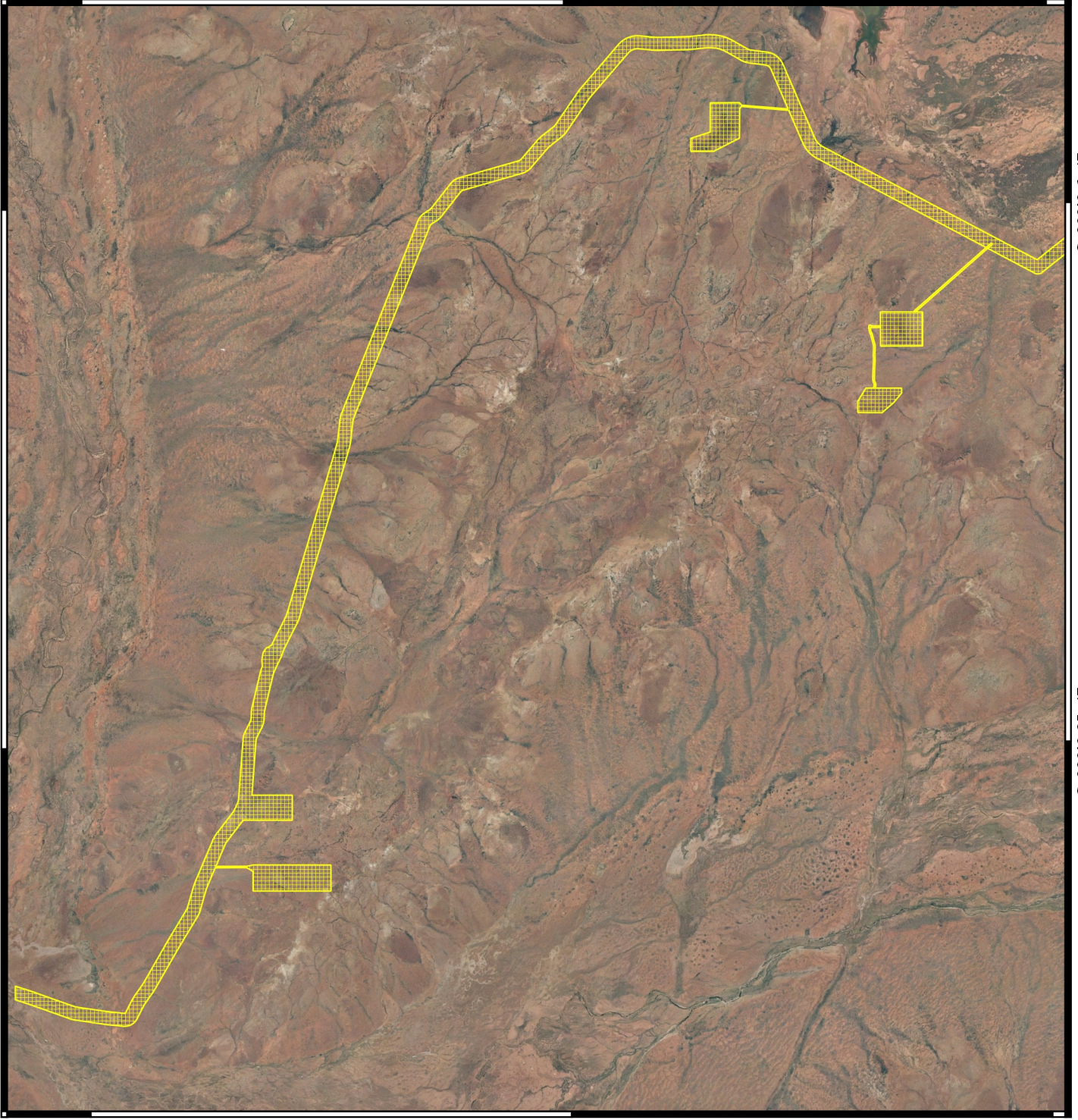
116°15'0.000"E

27°9'0.000"S

27°9'0.000"S

27°18'0.000"S

27°18'0.000"S




115°57'0.000"E

116°6'0.000"E

116°15'0.000"E

## Legend

 CPS areas approved to clear  
Image



0 2.5 5 7.5 10 km



MGA 94  
Geocentric Datum of Australia 1994

Officer with delegated authority under Section 20  
of the Environmental Protection Act 1986



GOVERNMENT OF  
WESTERN AUSTRALIA  
WA Crown Copyright 2018