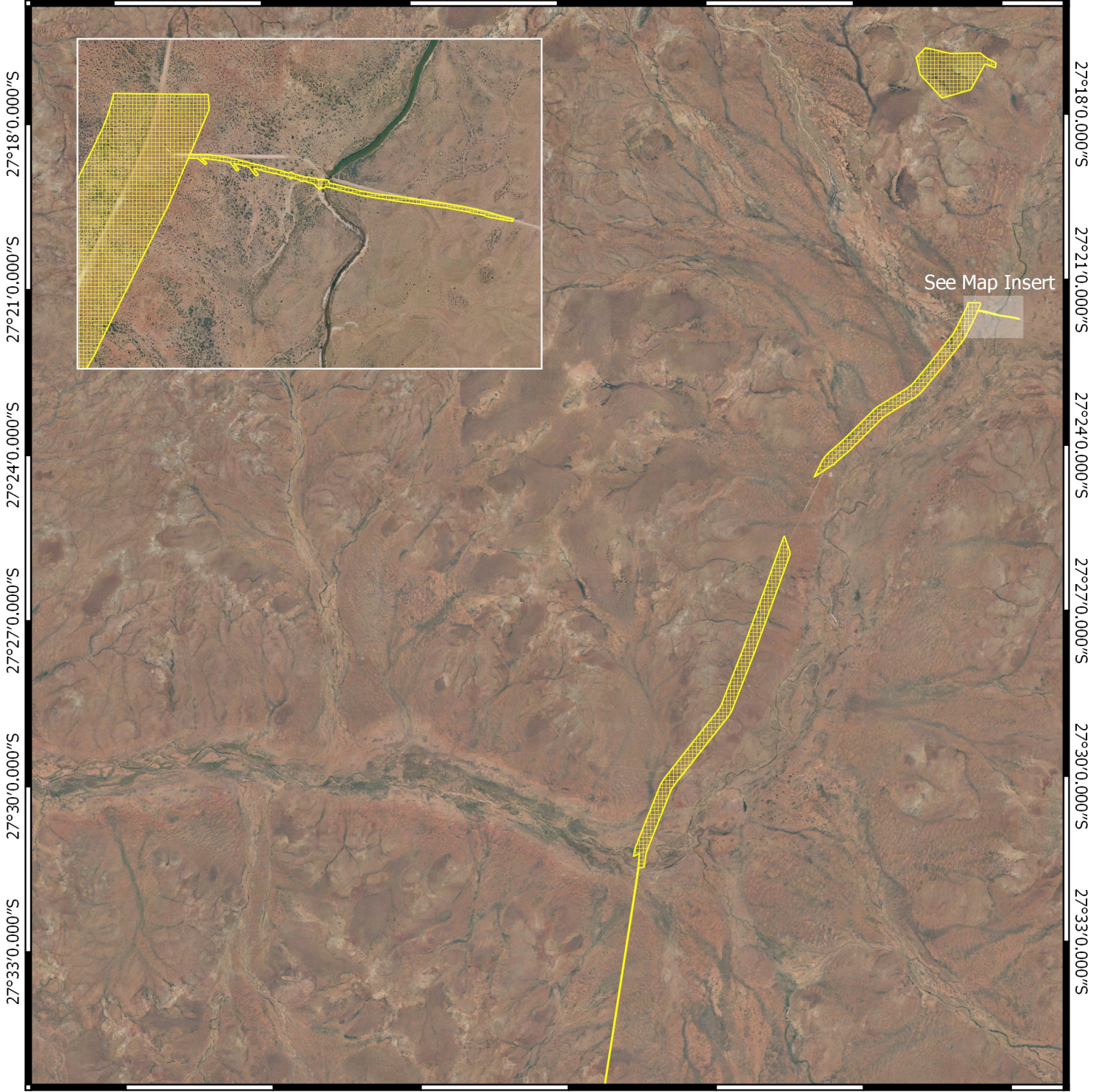



Draft Plan 7916/2(e)

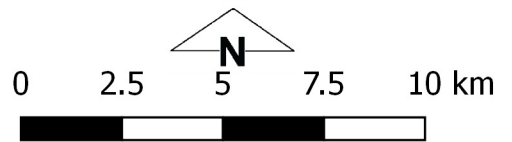
115°36'0.000"E 115°39'0.000"E 115°42'0.000"E 115°45'0.000"E 115°48'0.000"E 115°51'0.000"E 115°54'0.000"E



115°36'0.000"E 115°39'0.000"E 115°42'0.000"E 115°45'0.000"E 115°48'0.000"E 115°51'0.000"E 115°54'0.000"E

Legend

 CPS areas approved to clear
Image



MGA 94
Geocentric Datum of Australia 1994

Officer with delegated authority under Section 20
of the Environmental Protection Act 1986



GOVERNMENT OF
WESTERN AUSTRALIA
WA Crown Copyright 2018