

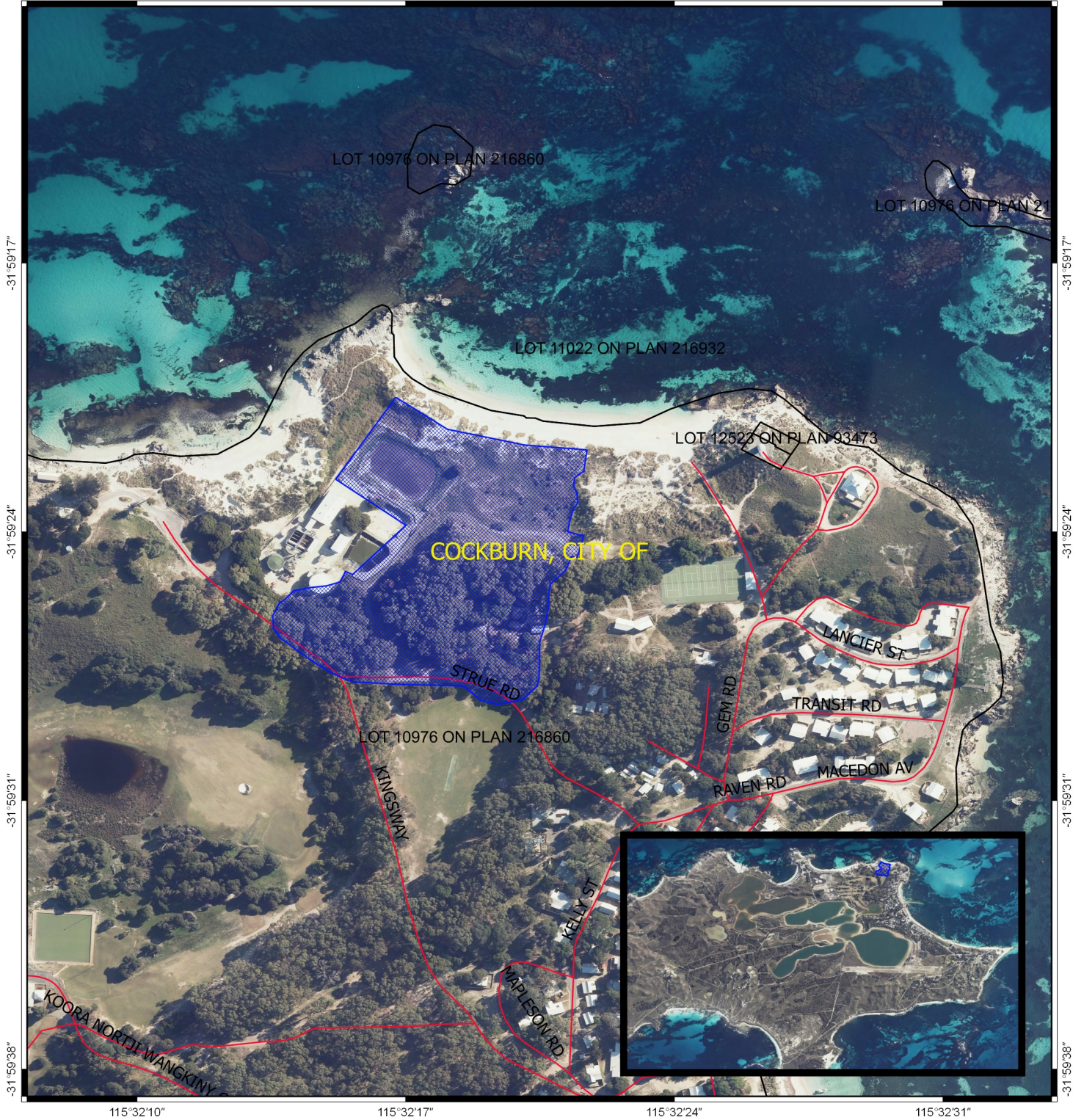
Map 7981/1

115°32'10"


115°32'17"

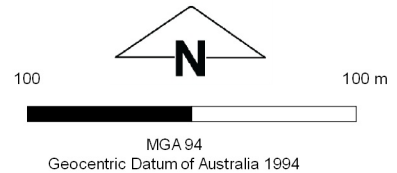
115°32'24"

115°32'31"



Legend

-  Areas applied to clear
-  roads_201501131816
-  lga_201501131742
-  Cadastre
- WANow_Imagery



.....Date.....

Officer with delegated authority under Section 20
of the Environmental Protection Act 1986



**GOVERNMENT OF
WESTERN AUSTRALIA**