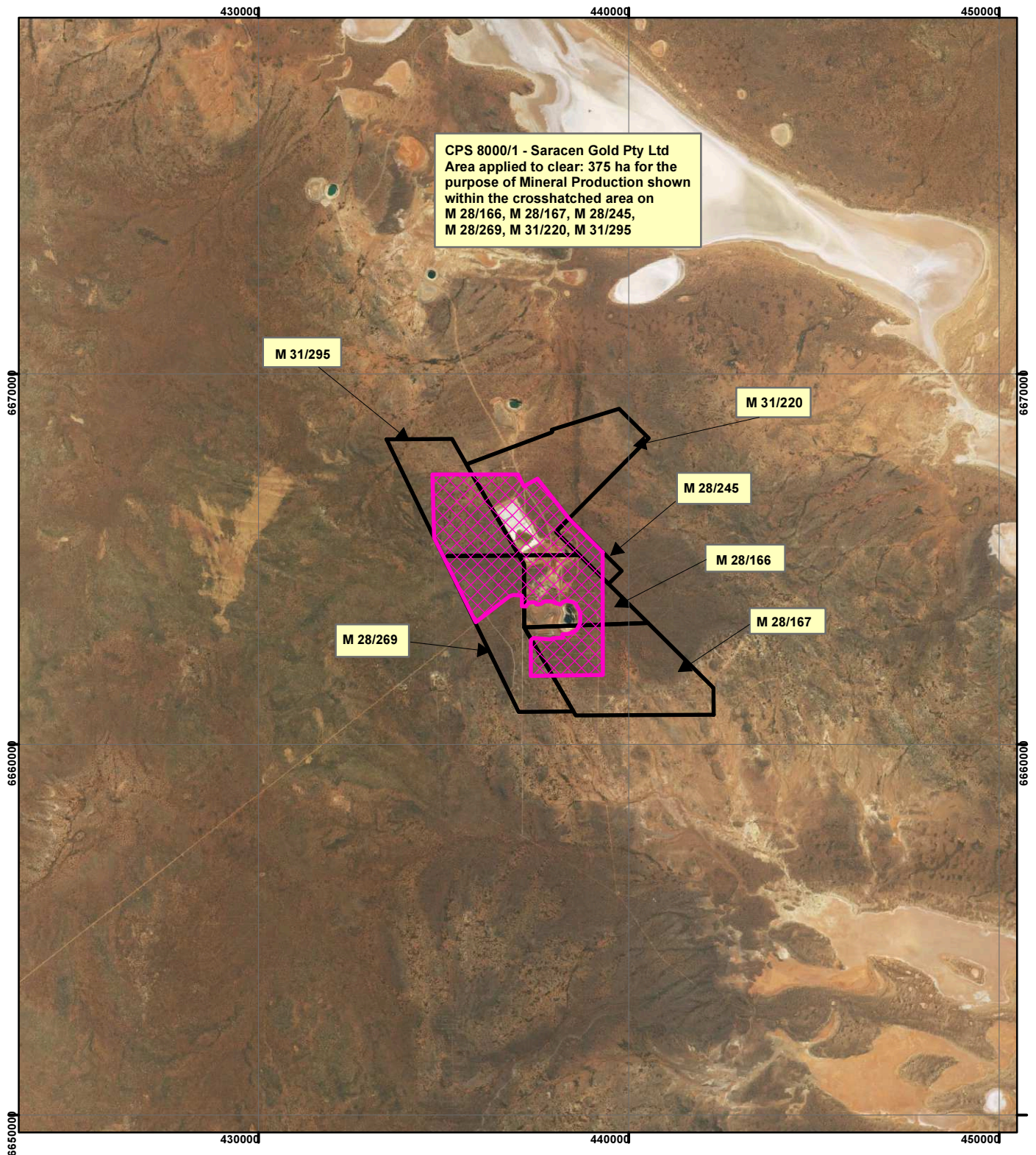


CPS 8000/1 - Saracen Gold Pty Ltd



CPS 8000/1 - Saracen Gold Pty Ltd
 Area applied to clear: 375 ha for the
 purpose of Mineral Production shown
 within the crosshatched area on
 M 28/166, M 28/167, M 28/245,
 M 28/269, M 31/220, M 31/295

M 31/295

M 31/220


M 28/245

M 28/166




M 28/269

M 28/167

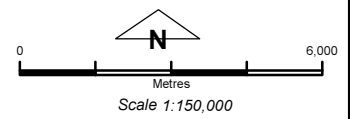
Legend

 Clearing Instruments

TENID

-  M 2800166
-  M 2800167
-  M 2800245
-  M 2800269
-  M 3100220
-  M 3100295

Aerial -- Mulgabbie 2010



Geocentric Datum Australia 1994
 Note: the data in this map have not been
 projected. This may result in geometric
 distortion or measurement inaccuracies.

..... Date

Officer with delegated authority under Section 20 of
 the Environmental Protection Act 1986

Information derived from this map should be
 confirmed with the data custodian acknowledged
 by the agency acronym in the legend.

