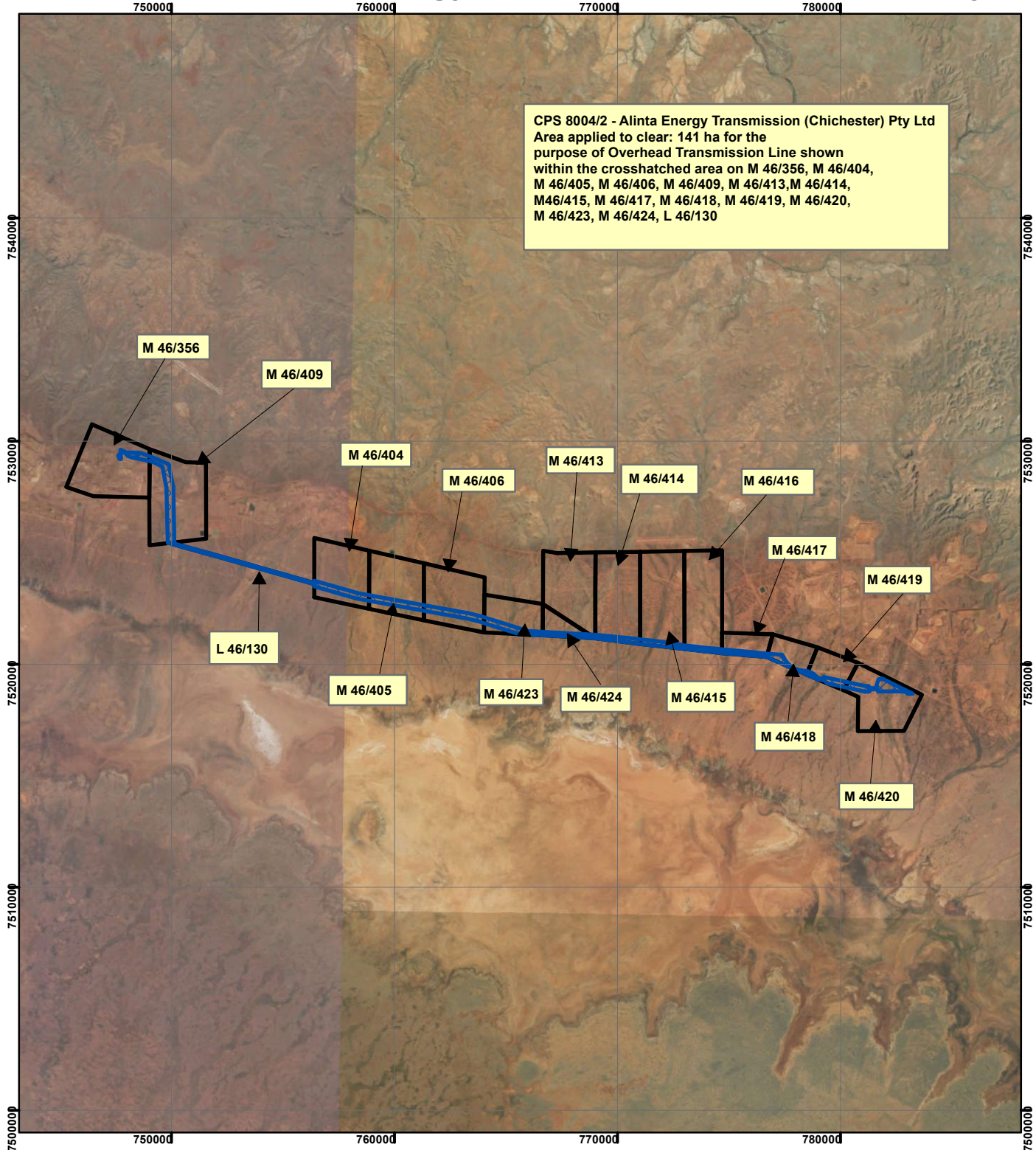


CPS 8004/2 - Alinta Energy Transmission (Chichester) Pty Ltd

CPS 8004/2 - Alinta Energy Transmission (Chichester) Pty Ltd
 Area applied to clear: 141 ha for the
 purpose of Overhead Transmission Line shown
 within the crosshatched area on M 46/356, M 46/404,
 M 46/405, M 46/406, M 46/409, M 46/413, M 46/414,
 M 46/415, M 46/417, M 46/418, M 46/419, M 46/420,
 M 46/423, M 46/424, L 46/130

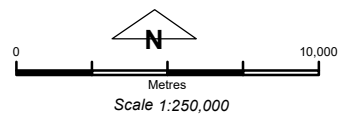


Legend

Clearing Instruments

TENID

- L 4600130
- M 4600356
- M 4600404
- M 4600405
- M 4600406
- M 4600409
- M 4600413
- M 4600414
- M 4600415
- M 4600416
- M 4600417
- M 4600418
- M 4600419
- M 4600420
- M 4600423
- M 4600424



Geocentric Datum Australia 1994

Note: the data in this map have not been projected. This may result in geometric distortion or measurement inaccuracies.

..... Date

Officer with delegated authority under Section 20 of the Environmental Protection Act 1986

Information derived from this map should be confirmed with the data custodian acknowledged by the agency acronym in the legend.

