

CPS 8024/1 Context Map

115°42'36"

115°44'24"

115°46'12"

115°48'0"

-32°25'48"

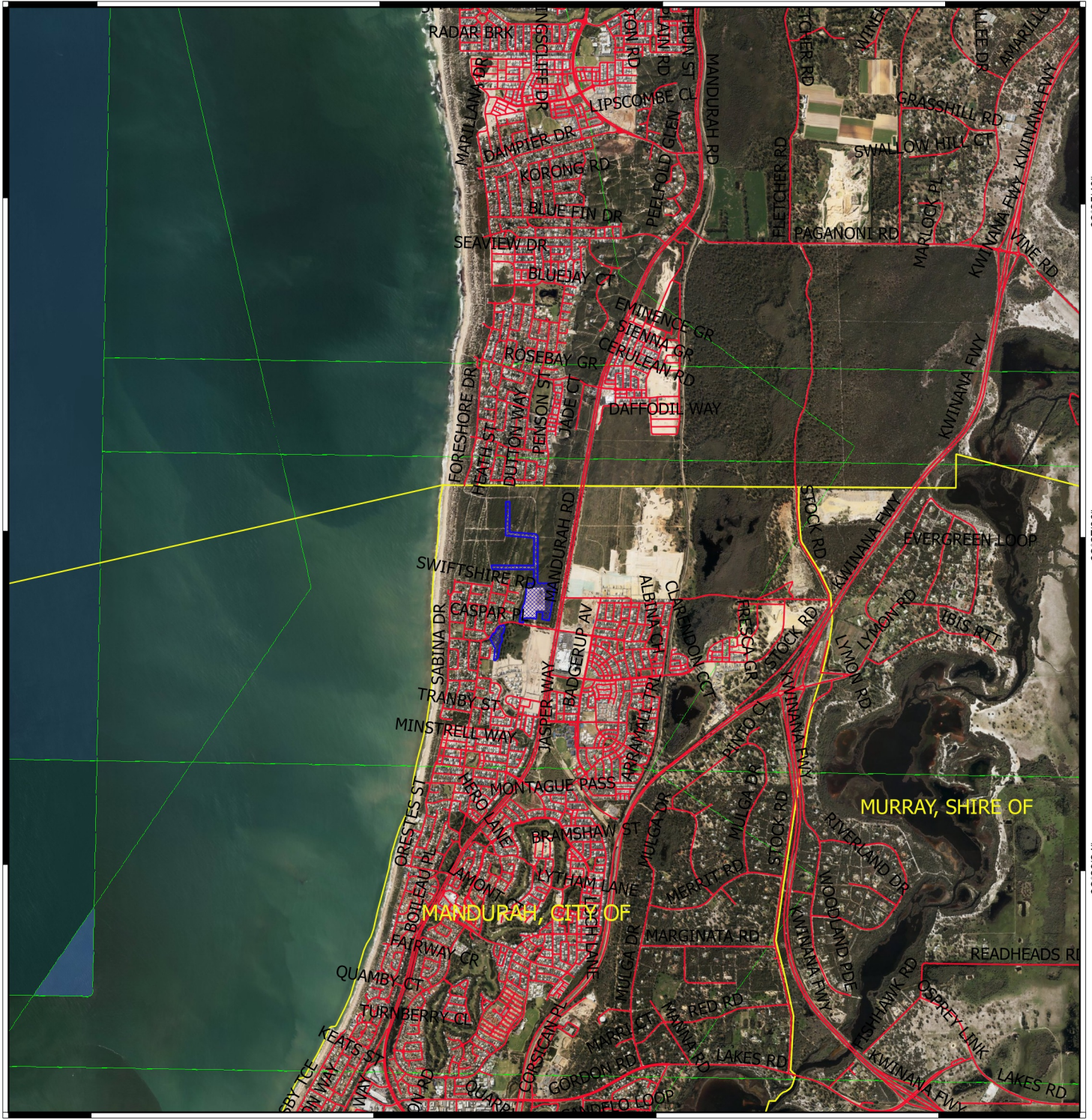
-32°25'48"

-32°27'36"

-32°27'36"

-32°29'24"

-32°29'24"






115°42'36"

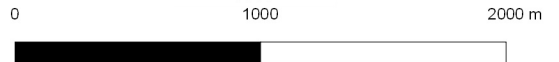
115°44'24"

115°46'12"

115°48'0"

Legend

-  Area Applied to Clear
 -  Roads
 -  Local Government Authority
- WANow_Imagery



MGA 94
Geocentric Datum of Australia 1994

.....Date.....

Officer with delegated authority under Section 20
of the Environmental Protection Act 1986



**GOVERNMENT OF
WESTERN AUSTRALIA**