

CPS 8045/1 - Context Map

116°12'0.000"E

116°15'0.000"E

116°18'0.000"E

116°21'0.000"E

34°36'0.000"S

34°39'0.000"S

34°42'0.000"S

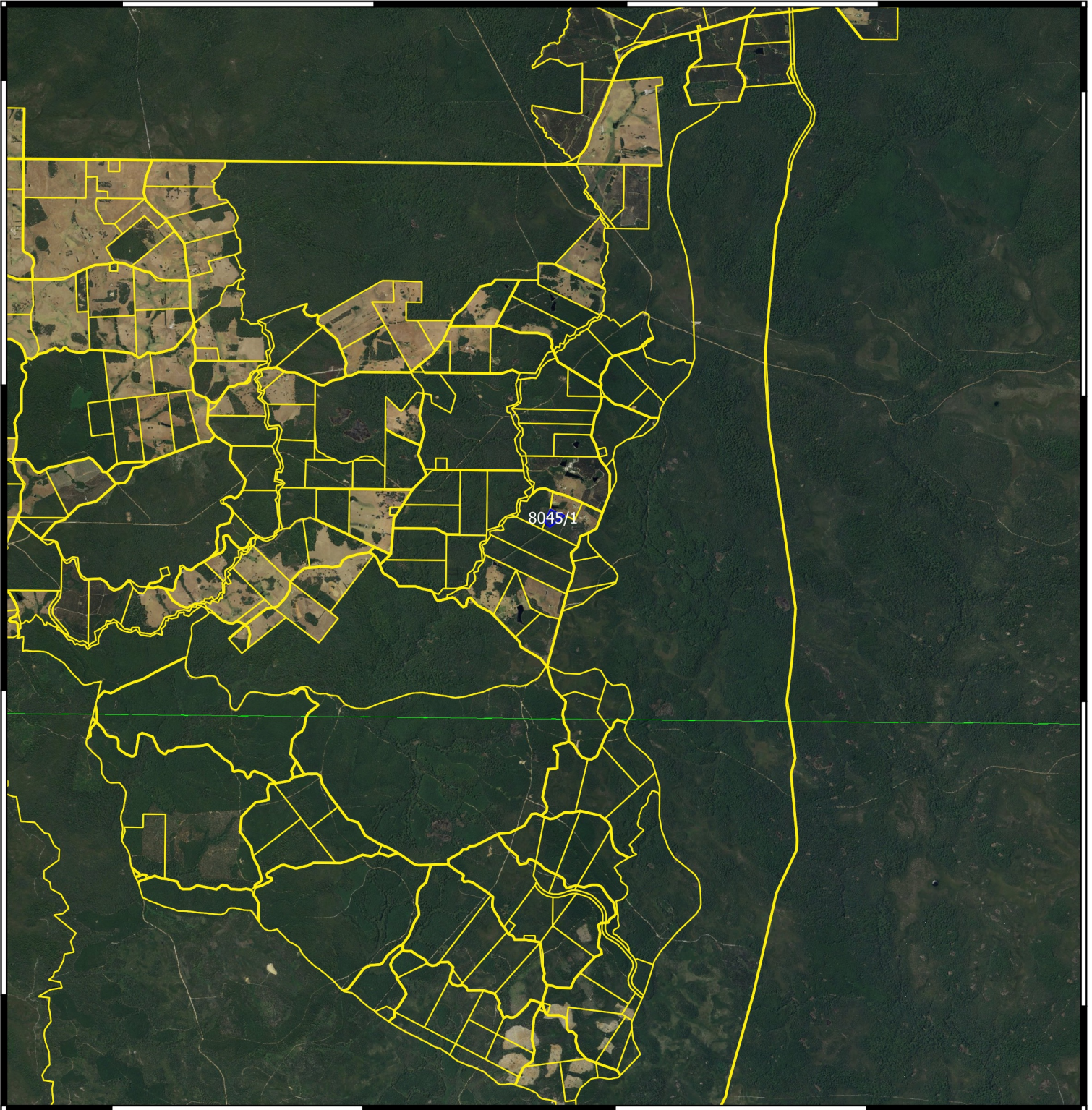
34°45'0.000"S

34°36'0.000"S

34°39'0.000"S

34°42'0.000"S

34°45'0.000"S




116°12'0.000"E


116°15'0.000"E

116°18'0.000"E

116°21'0.000"E

Legend

 Areas applied to clear
cadastre

 Cadastre
WANow_Imagery



0 1 2 3 4 Km



MGA 94
Geocentric Datum of Australia 1994

.....Date.....

Officer with delegated authority under Section 20
of the Environmental Protection Act 1986



GOVERNMENT OF
WESTERN AUSTRALIA