

# CPS 8047/2 - Context Map

118°27'50.400"E

118°33'36.000"E

118°39'21.600"E

118°45'7.200"E

20°10'33.600"S

20°10'33.600"S

20°16'22.800"S

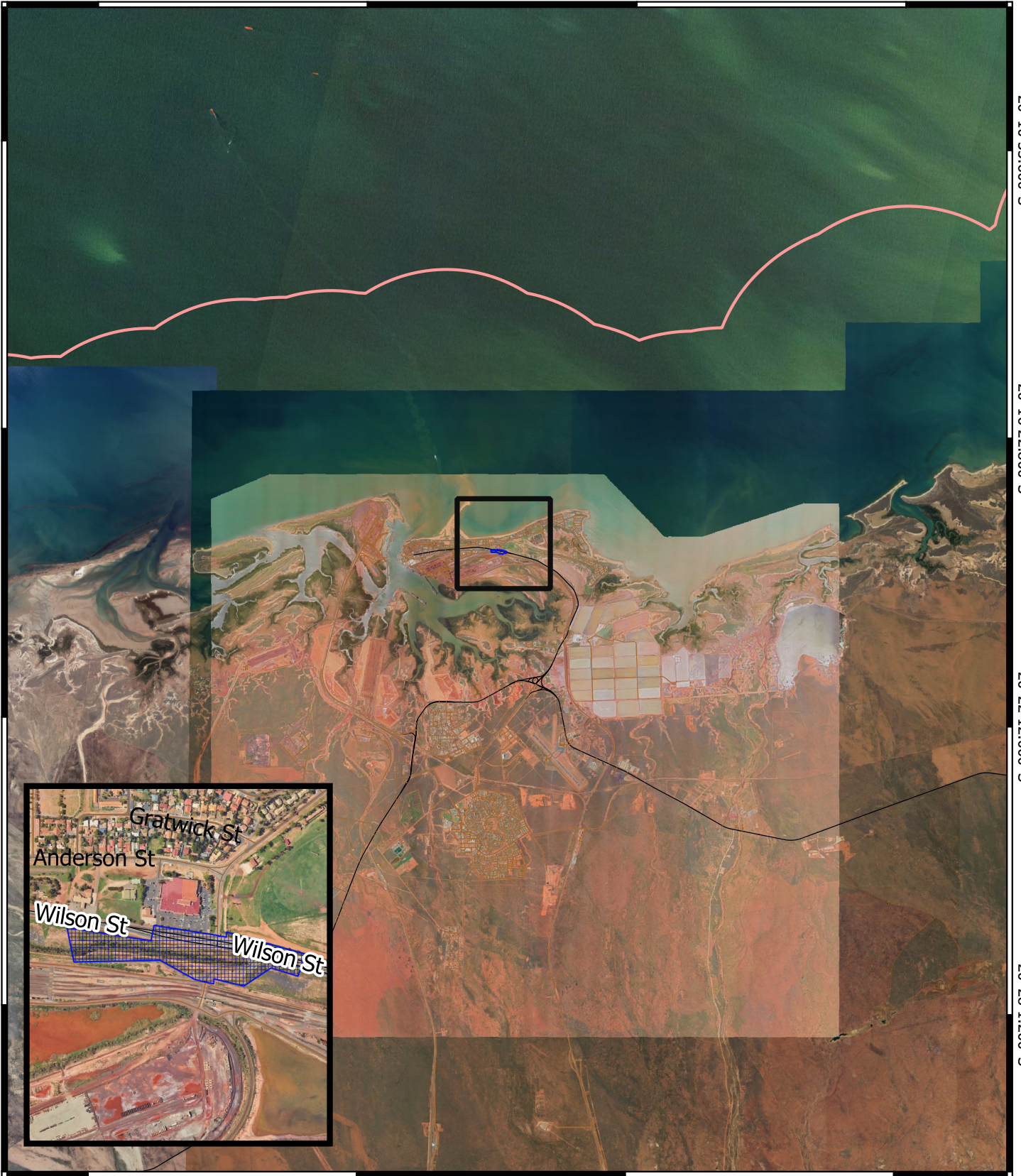
20°16'22.800"S

20°22'12.000"S

20°22'12.000"S

20°28'1.200"S

20°28'1.200"S





118°27'50.400"E

118°33'36.000"E

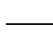

118°39'21.600"E

118°45'7.200"E

## Legend

-  CPS areas applied to clear
-  Local Government Authorities

## Road Centrelines

-  Highway
-  Local Rd - Sealed

## Image



1:200000

0 2.5 5 7.5 10 km



MGA 94  
Geocentric Datum of Australia 1994



GOVERNMENT OF  
WESTERN AUSTRALIA