

CPS 8057/1 Context Map

115°38'24"

115°40'48"

115°43'12"

-32°55'12"

-32°55'12"

-32°57'36"

-32°57'36"

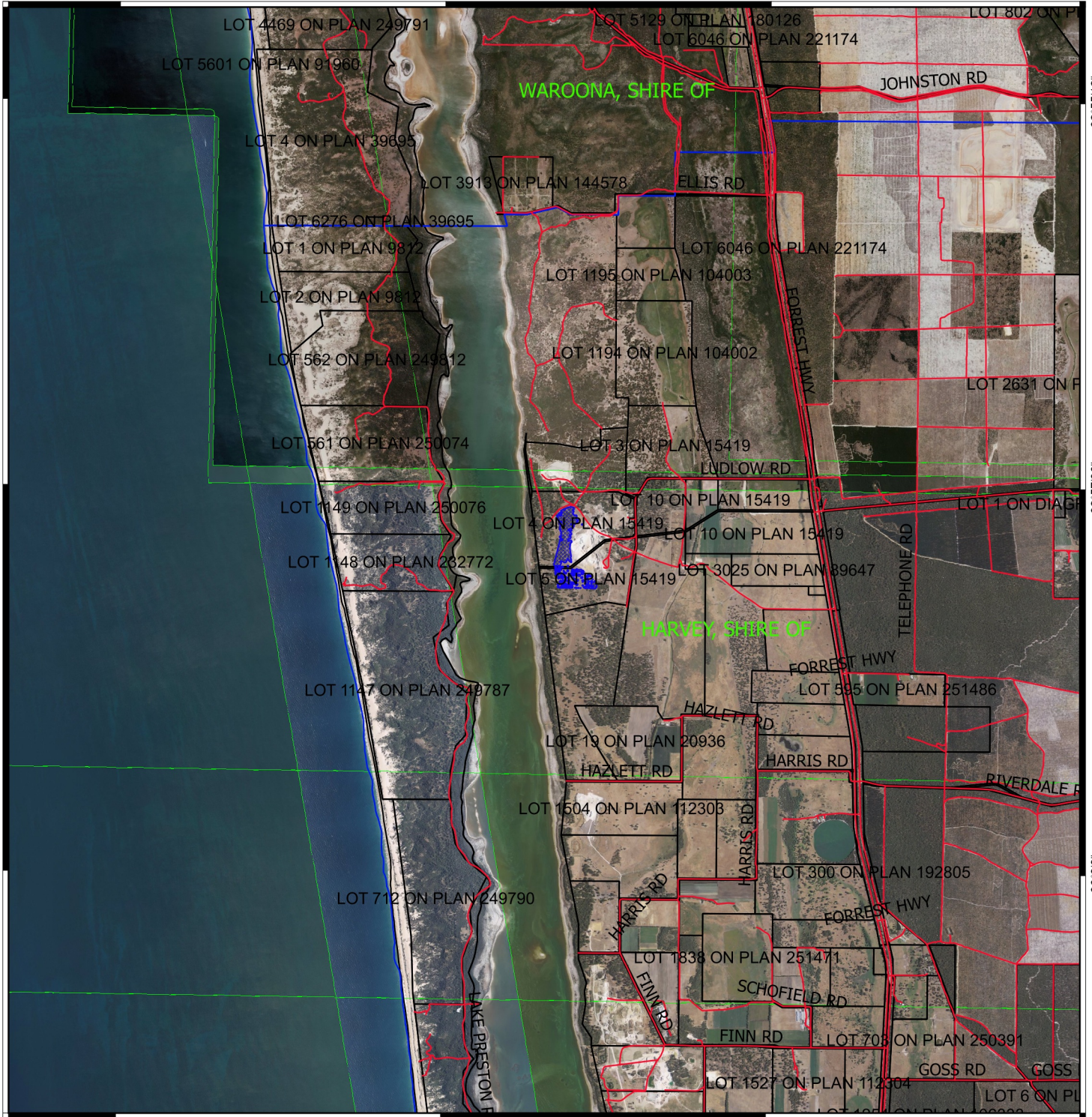
-33°0'0"

-33°0'0"

115°38'24"

115°40'48"


115°43'12"



Legend

 Area applied to clear

 Roads

 Local Government Authority
cadastre

 Cadastre

WANow_Imagery



MGA 94
Geocentric Datum of Australia 1994

.....Date.....

Officer with delegated authority under Section 20
of the Environmental Protection Act 1986



GOVERNMENT OF
WESTERN AUSTRALIA