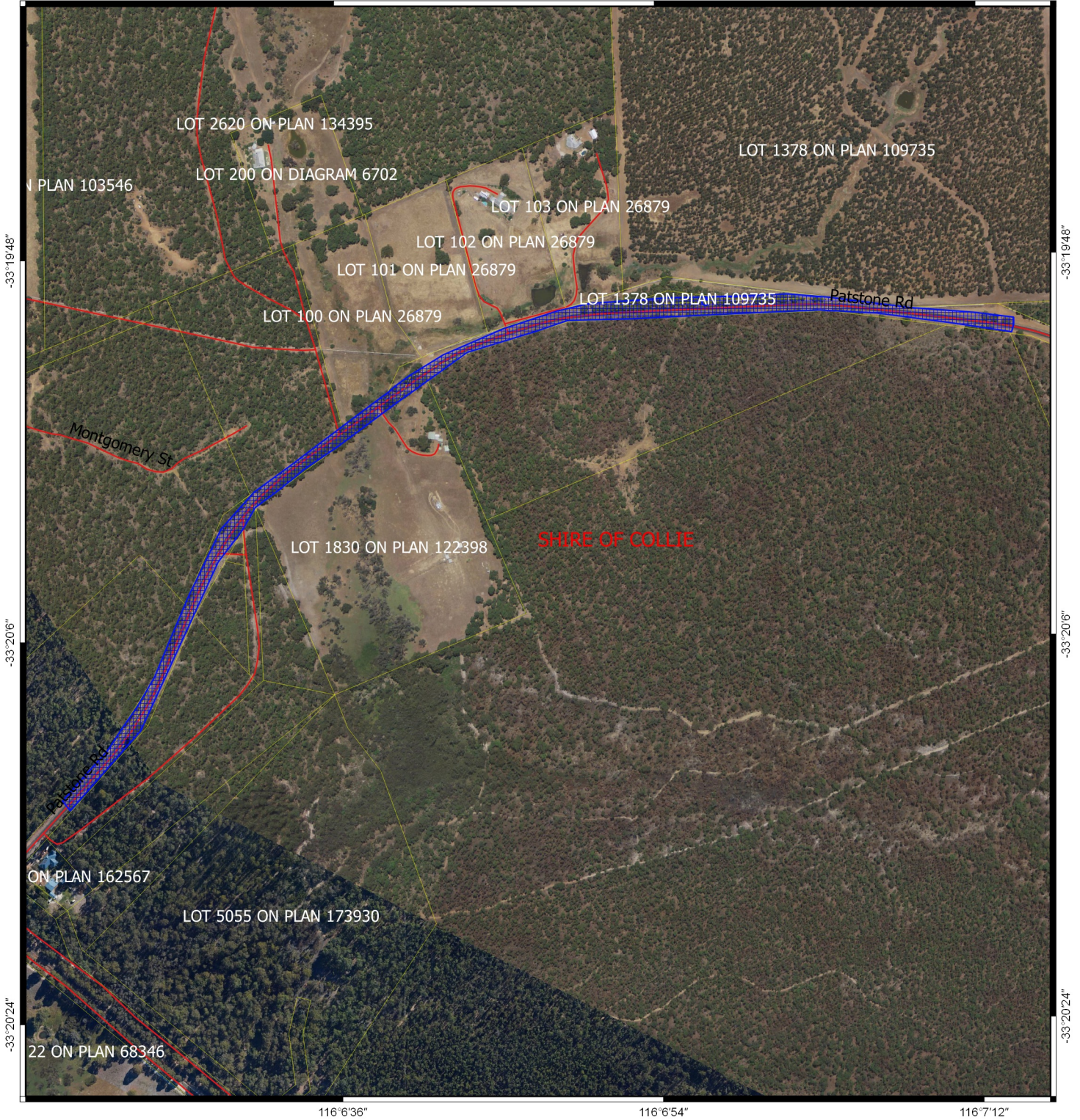


CPS 8063/1 - Map

116°6'36"

116°6'54"

116°7'12"



116°6'36"

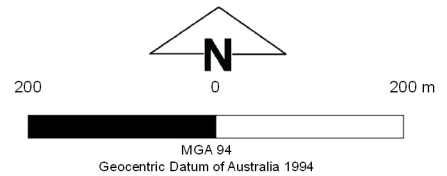
116°6'54"

116°7'12"

Legend

-  CPS areas applied to clear
-  Cadastre
-  Local Government Authorities
-  Roads

Image



Officer with delegated authority under Section 20
 of the Environmental Protection Act 1986



GOVERNMENT OF
 WESTERN AUSTRALIA