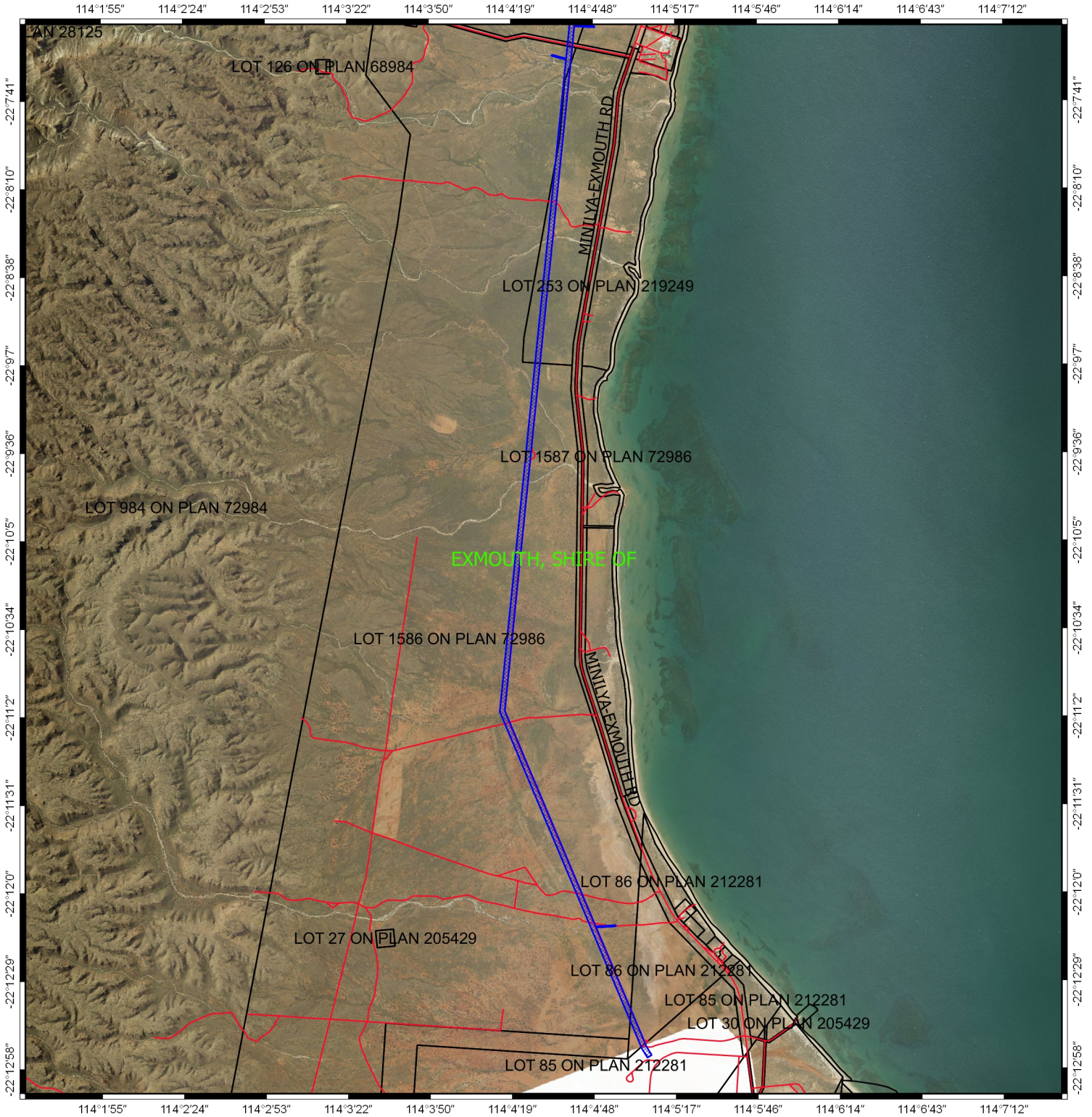


# CPS 8067/1 - Map c



## Legend

-  Areas applied to clear
-  Roads
-  Local Government Authority
-  Cadastre
-  WANow\_Imagery



0 50 100 m

MGA 94  
Geocentric Datum of Australia 1994

.....Date.....  
Emma Bramwell

Officer with delegated authority under Section 20  
of the Environmental Protection Act 1986



GOVERNMENT OF  
WESTERN AUSTRALIA