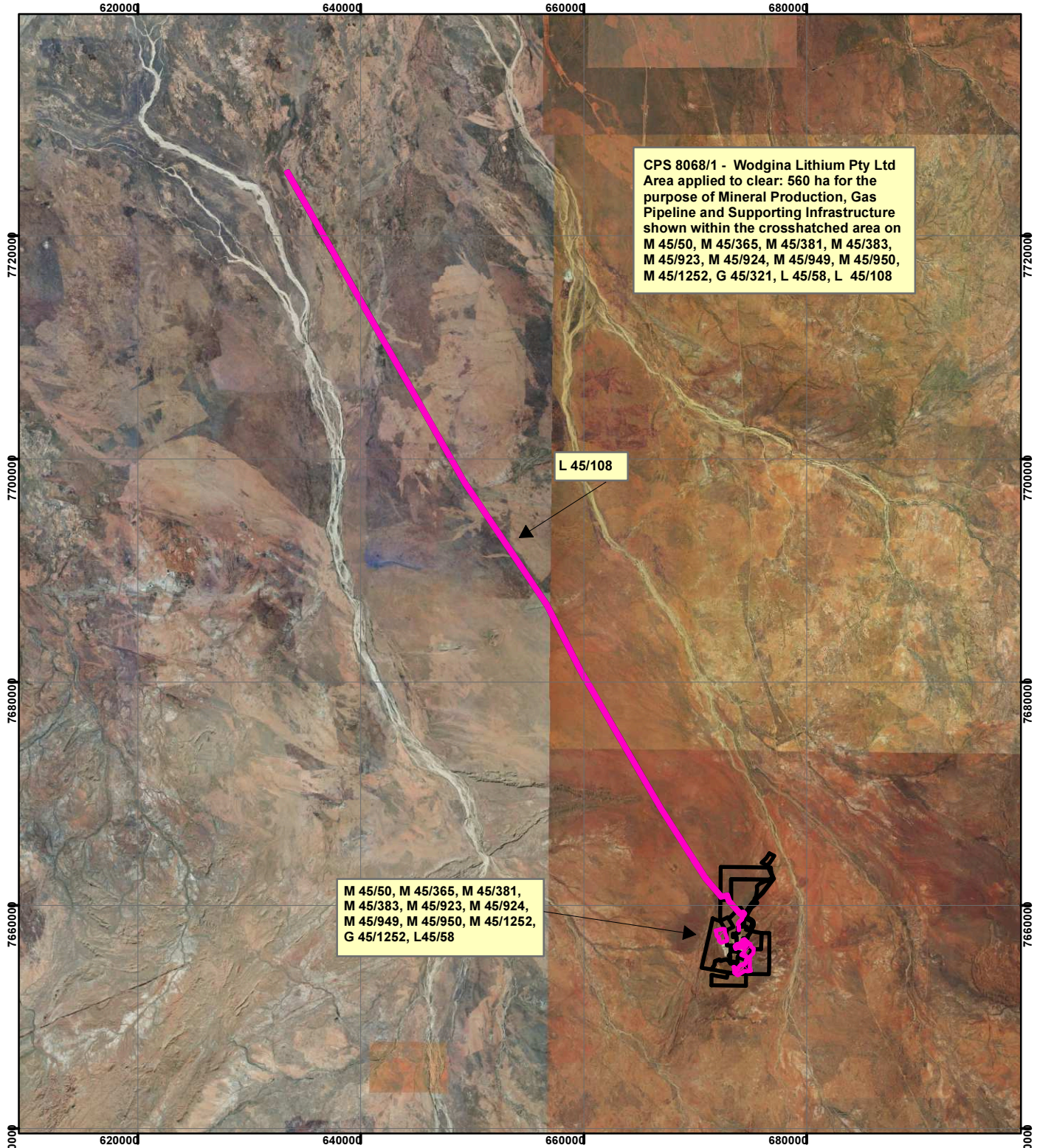


CPS 8068/1 - Wodgina Lithium Pty Ltd

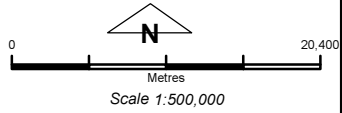


CPS 8068/1 - Wodgina Lithium Pty Ltd
 Area applied to clear: 560 ha for the
 purpose of Mineral Production, Gas
 Pipeline and Supporting Infrastructure
 shown within the crosshatched area on
 M 45/50, M 45/365, M 45/381, M 45/383,
 M 45/923, M 45/924, M 45/949, M 45/950,
 M 45/1252, G 45/321, L 45/58, L 45/108

L 45/108

M 45/50, M 45/365, M 45/381,
 M 45/383, M 45/923, M 45/924,
 M 45/949, M 45/950, M 45/1252,
 G 45/1252, L45/58

- Legend**
- Clearing Instruments
 - TENID**
 - M 4501252
 - M 4500950
 - M 4500949
 - M 4500924
 - M 4500923
 - M 4500383
 - M 4500381
 - M 4500365
 - M 4500050
 - M 3901116
 - L 4500108
 - L 4500058
 - G 4500321



Geocentric Datum Australia 1994
 Note: the data in this map have not been
 projected. This may result in geometric
 distortion or measurement inaccuracies.

..... Date

Officer with delegated authority under Section 20 of
 the Environmental Protection Act 1986

Information derived from this map should be
 confirmed with the data custodian acknowledged
 by the agency acronym in the legend.

