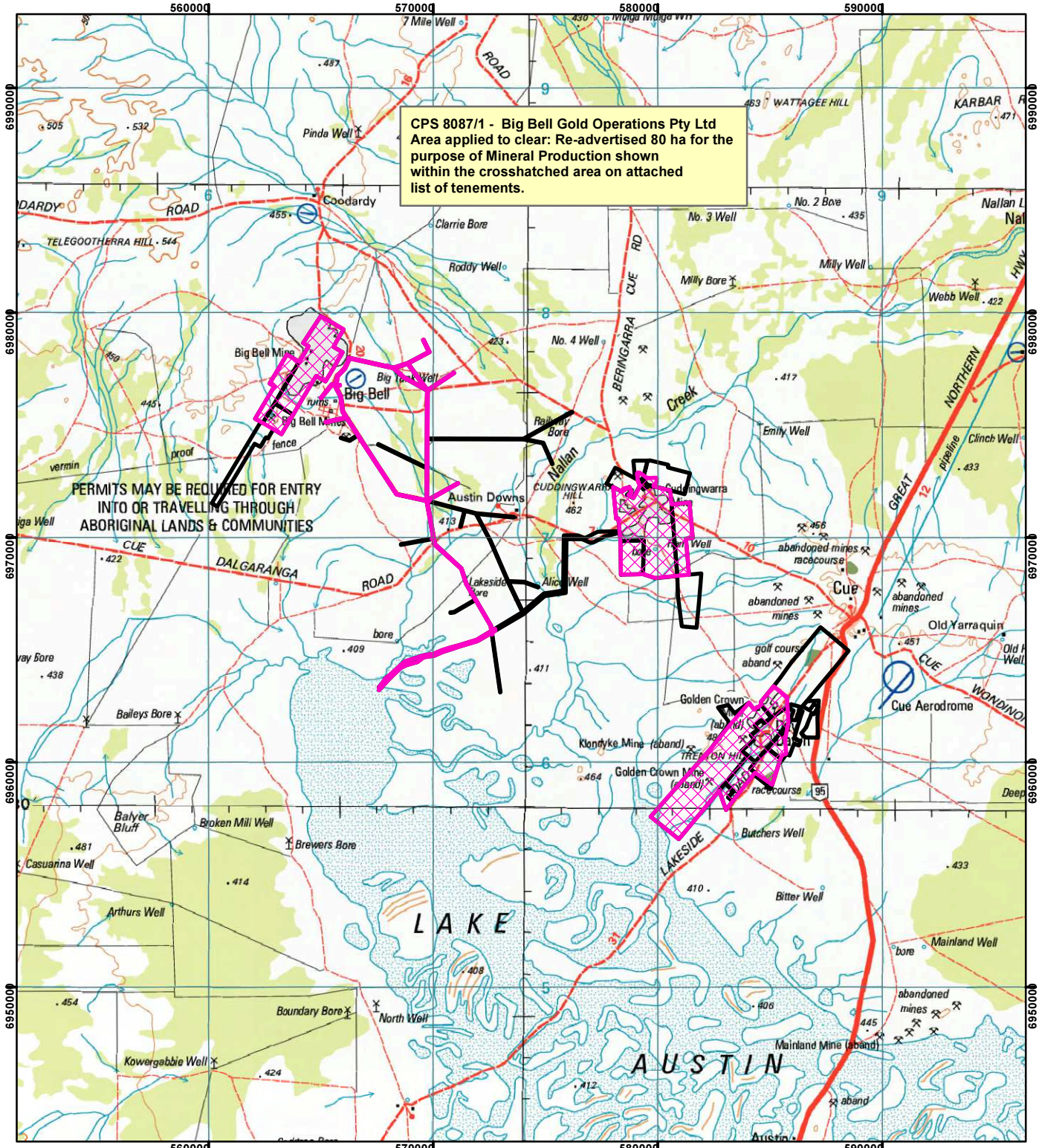


CPS 8087/1 - Big Bell Gold Operations Pty Ltd

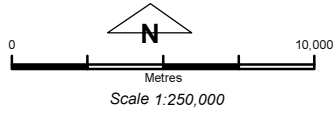


Legend

✕ Clearing Instruments

TENID

█	L 2000021
█	L 2000040
█	M 2000017
█	M 2000021
█	M 2000022
█	M 2000078
█	M 2000099
█	M 2000171
█	M 2000192
█	M 2000202
█	M 2000252
█	M 2000354
█	M 2100007
█	M 2100014
█	M 2100044
█	M 2100049
█	M 2100065
█	M 2100075
█	M 2100089
█	M 2100096



Geocentric Datum Australia 1994
 Note: the data in this map have not been projected. This may result in geometric distortion or measurement inaccuracies.

Date

Officer with delegated authority under Section 20 of the Environmental Protection Act 1986

Information derived from this map should be confirmed with the data custodian acknowledged by the agency acronym in the legend.

