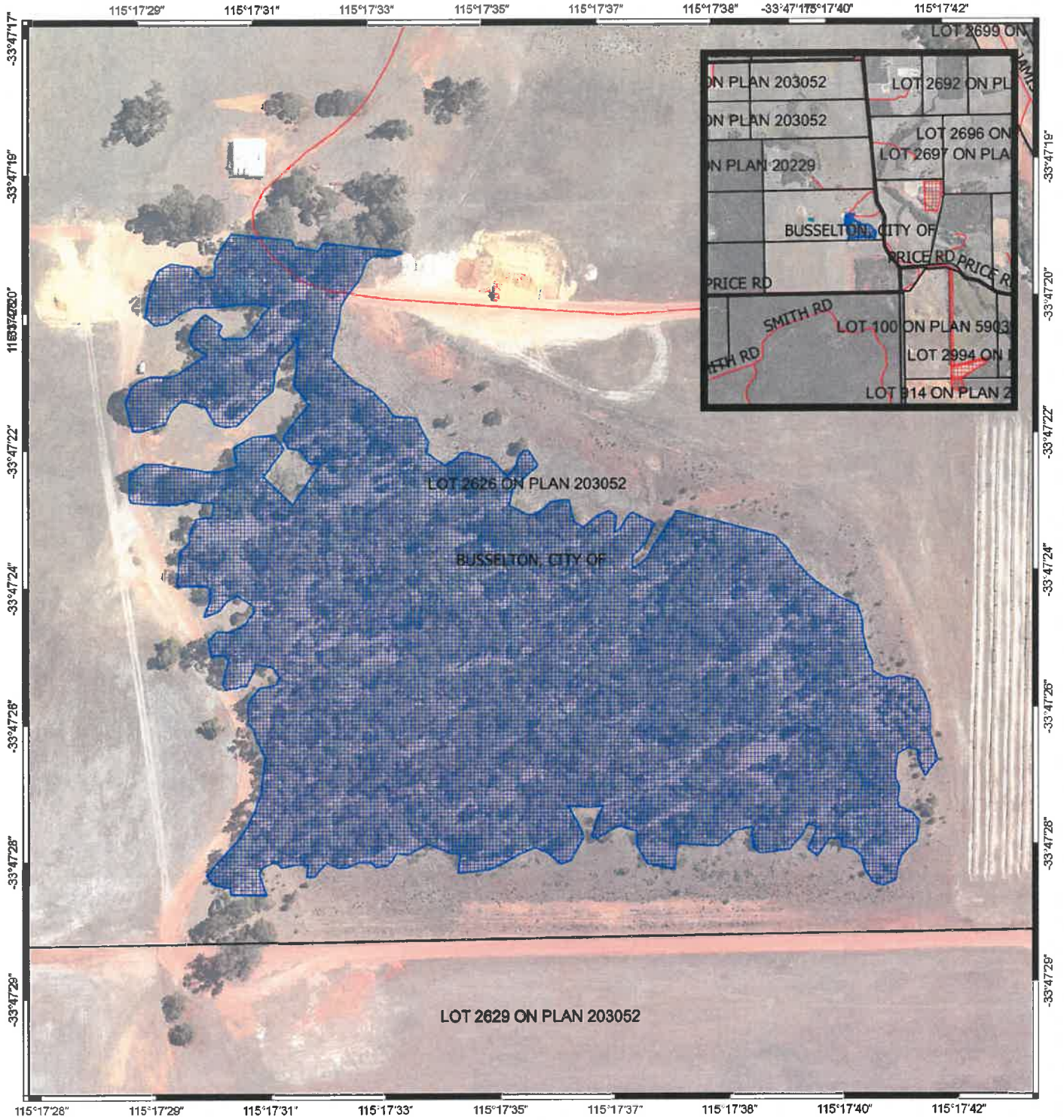




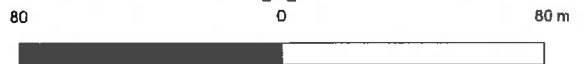


# CPS 8089/1 Map and Context



## Legend

-  Areas applied to clear
  -  Cadastre
  -  Roads
  -  Local Government Authority
- Virtual Mosaic



MGA 94  
Geocentric Datum of Australia 1994

.....Date.....

Officer with delegated authority under Section 20  
of the Environmental Protection Act 1986



GOVERNMENT OF  
WESTERN AUSTRALIA