








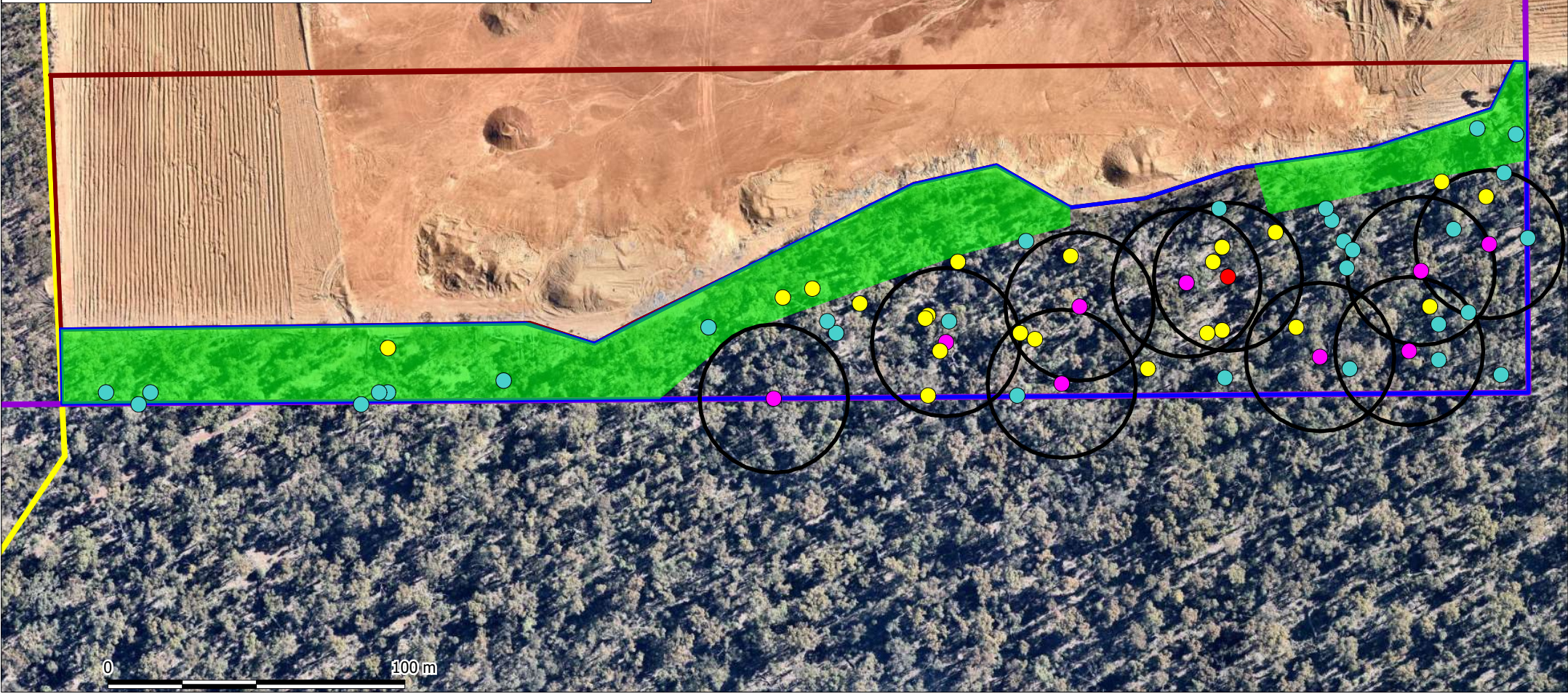


**Legend**

-  CPS 8107/2 Clearing Footprint
-  Proposed Additional Clearing Area (1ha total)
- Habitat Tress**
-  Tree contains hollow/s potentially suitable for cockatoos & shows evidence of use
-  Tree contains hollow/s potentially suitable for cockatoos
-  Tree contains hollow/s suitable for other fauna, but not for cockatoos
-  Tree contains no visible hollows.
-  Potential Cockatoo Hollow Habitat Tree 25m Buffer
-  M70/733 Live tenement boundary
-  M70/406 Dead tenement boundary



**Lundstrom Environmental  
Consultants Pty Ltd**

Leeming WA 6149  
Mob: 0417934863, mikelund1@bigpond.com

Scale: 1:1900  
Original Size: A4  
Air Photo Source: Nearmap September 2021  
Datum: GDA94  
Projection: Australia MGA94 (50)

Client: B & J Catalano  
Project: Gravel Extraction  
Location: Kingsmill Road, Pickering Brook

**Figure 1:  
Additional Clearing  
CPS 8101/2 Amendment**