

Plan 8107/1

117°46'34.860"E

117°46'35.040"E

117°46'35.220"E

117°46'35.400"E

117°46'35.580"E

117°46'35.760"E

117°46'35.940"E

35°32'28.620"S

35°32'28.800"S

35°32'28.980"S

35°32'29.160"S

35°32'29.340"S

35°32'29.520"S

35°32'28.620"S

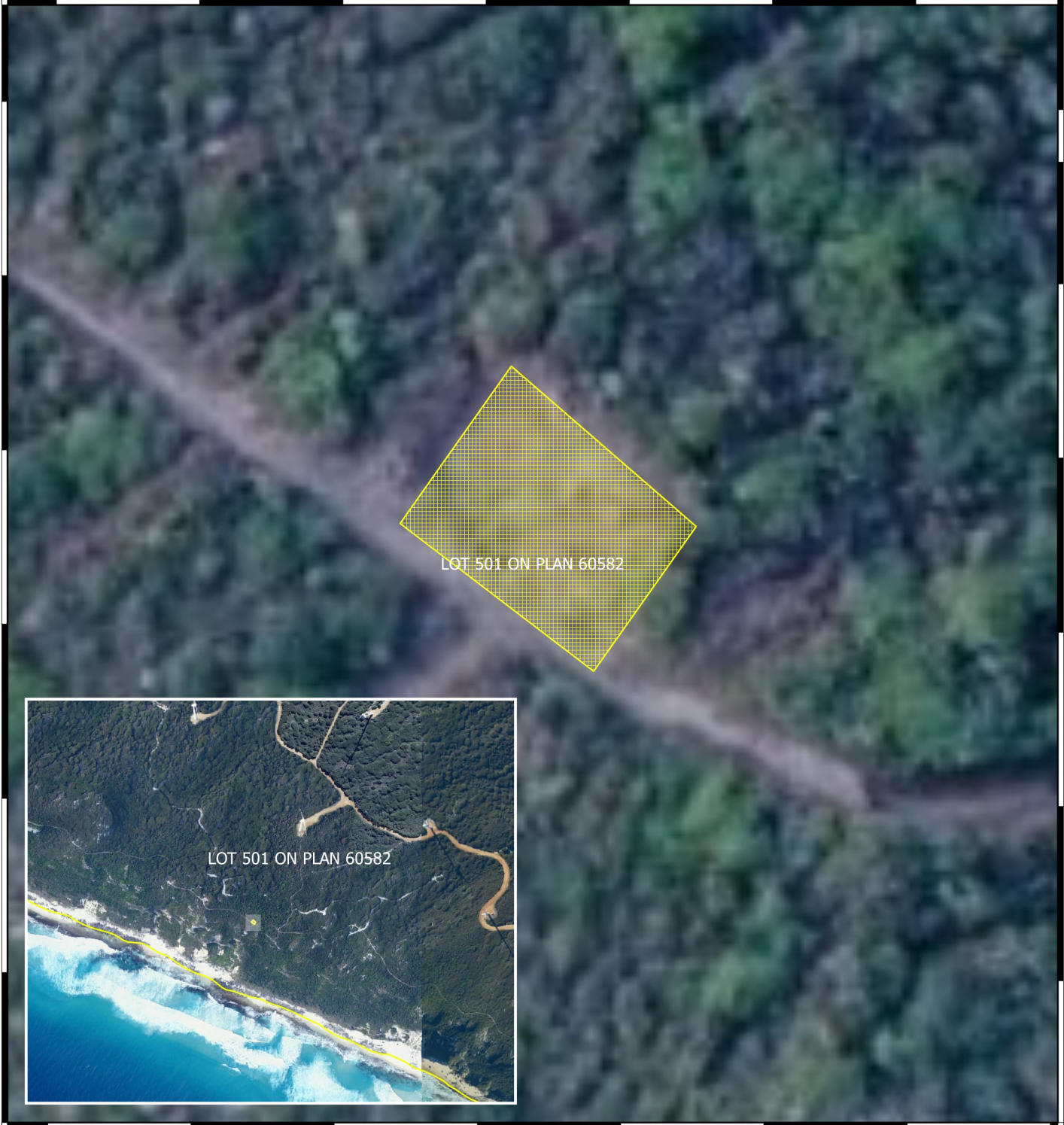
35°32'28.800"S

35°32'28.980"S

35°32'29.160"S

35°32'29.340"S

35°32'29.520"S



117°46'34.860"E

117°46'35.040"E

117°46'35.220"E

117°46'35.400"E



117°46'35.580"E

117°46'35.760"E

117°46'35.940"E

117°46'36.120"E

Legend

-  Areas approved to clear base layers
-  cadastre
- Image



0 2.5 5 7.5 10 m



MGA 94
Geocentric Datum of Australia 1994

.....Date.....
Abbie Crawford

Officer with delegated authority under Section 20
of the Environmental Protection Act 1986



GOVERNMENT OF
WESTERN AUSTRALIA