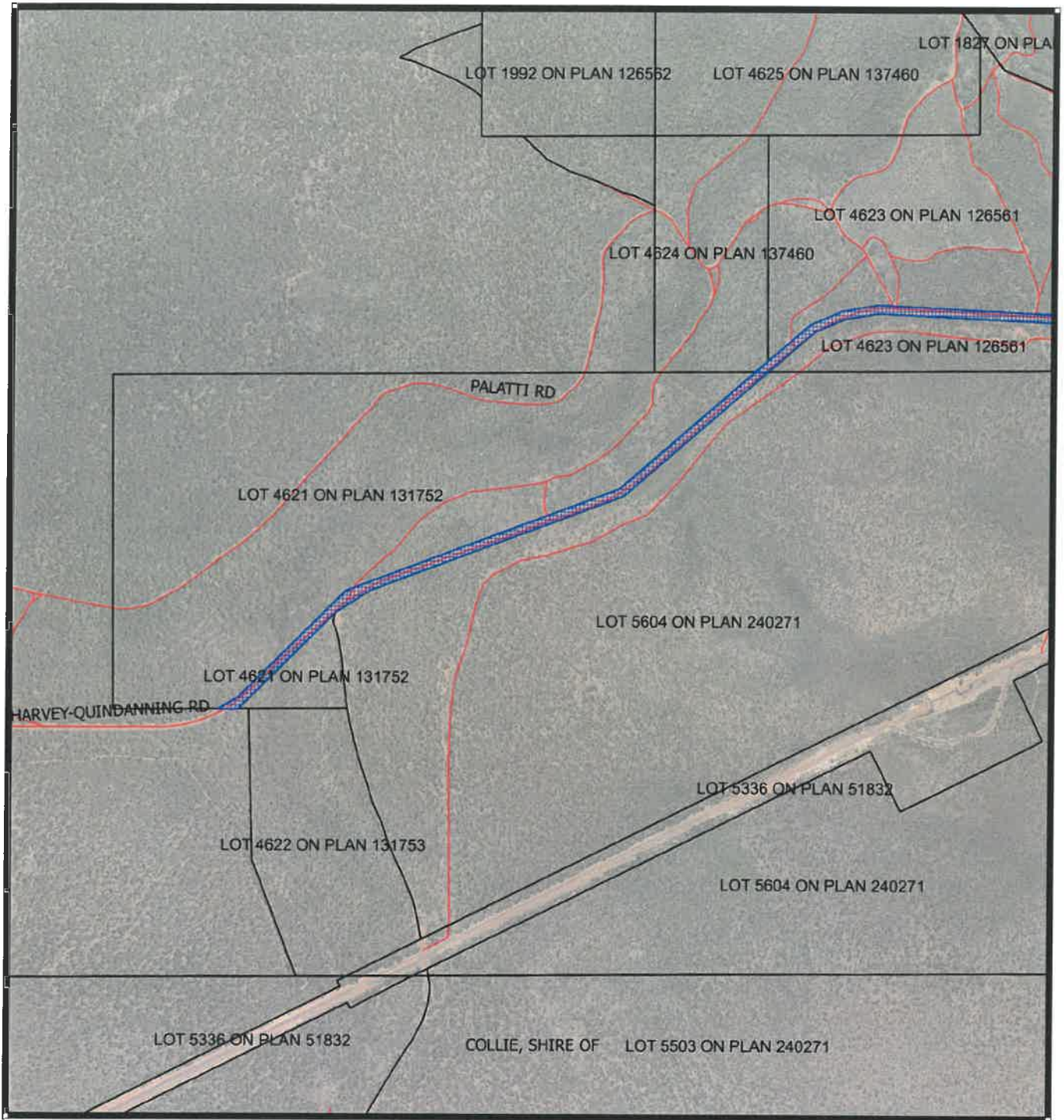


CPS 8113/1a - Map




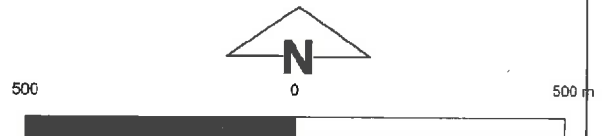
Legend

 CPS areas applied to clear base layers

 Cadastre

 roads

 Local Government Authority
Virtual Mosaic - WA Now



MGA 94
Geocentric Datum of Australia 1994

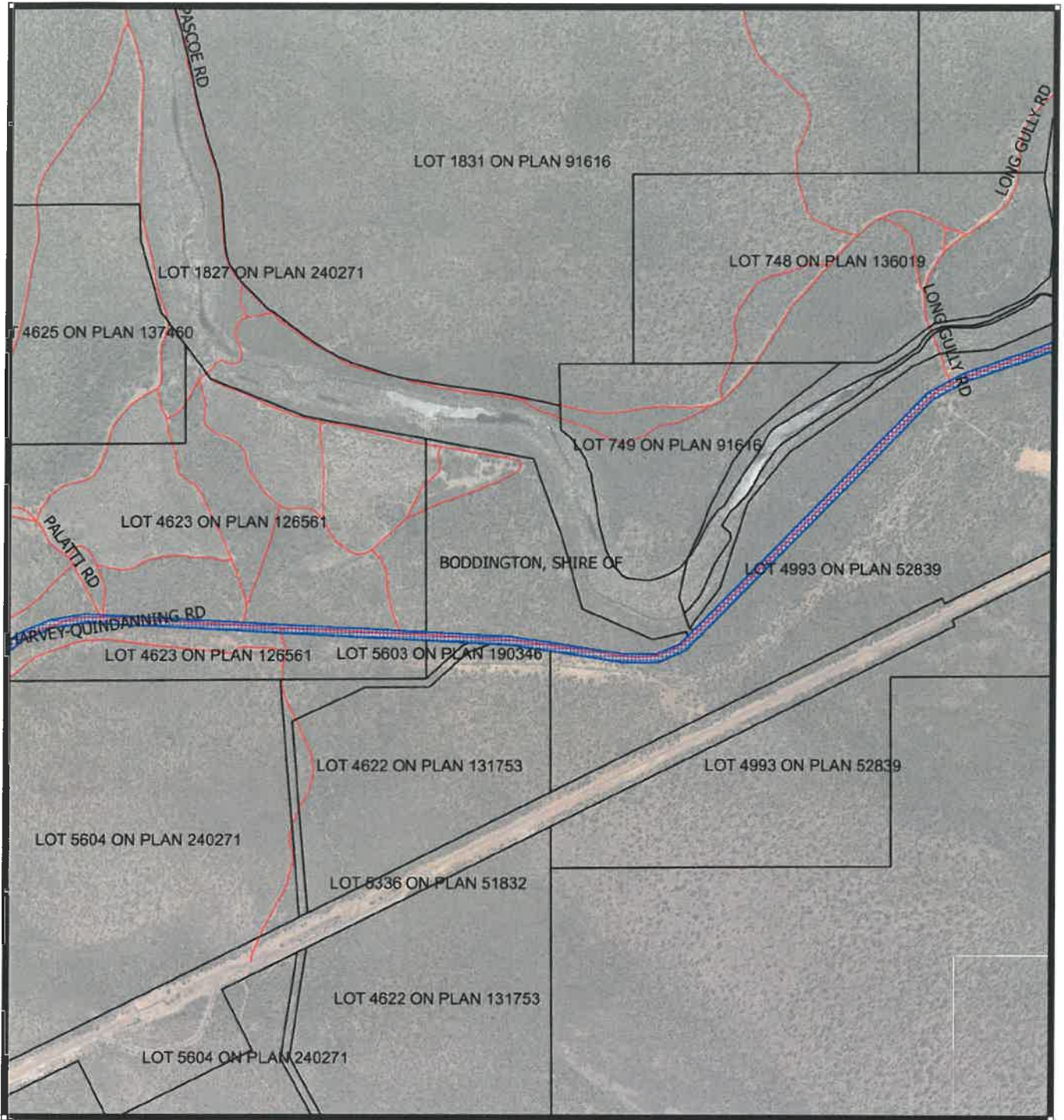
.....Date.....

Officer with delegated authority under Section 20
of the Environmental Protection Act 1986



GOVERNMENT OF
WESTERN AUSTRALIA

CPS 8113/1b - Map



Legend

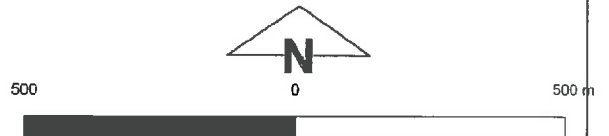
 CPS areas applied to clear base layers

 Cadastre

 roads

 Local Government Authority

Virtual Mosaic - WA Now



MGA94
Geocentric Datum of Australia 1994

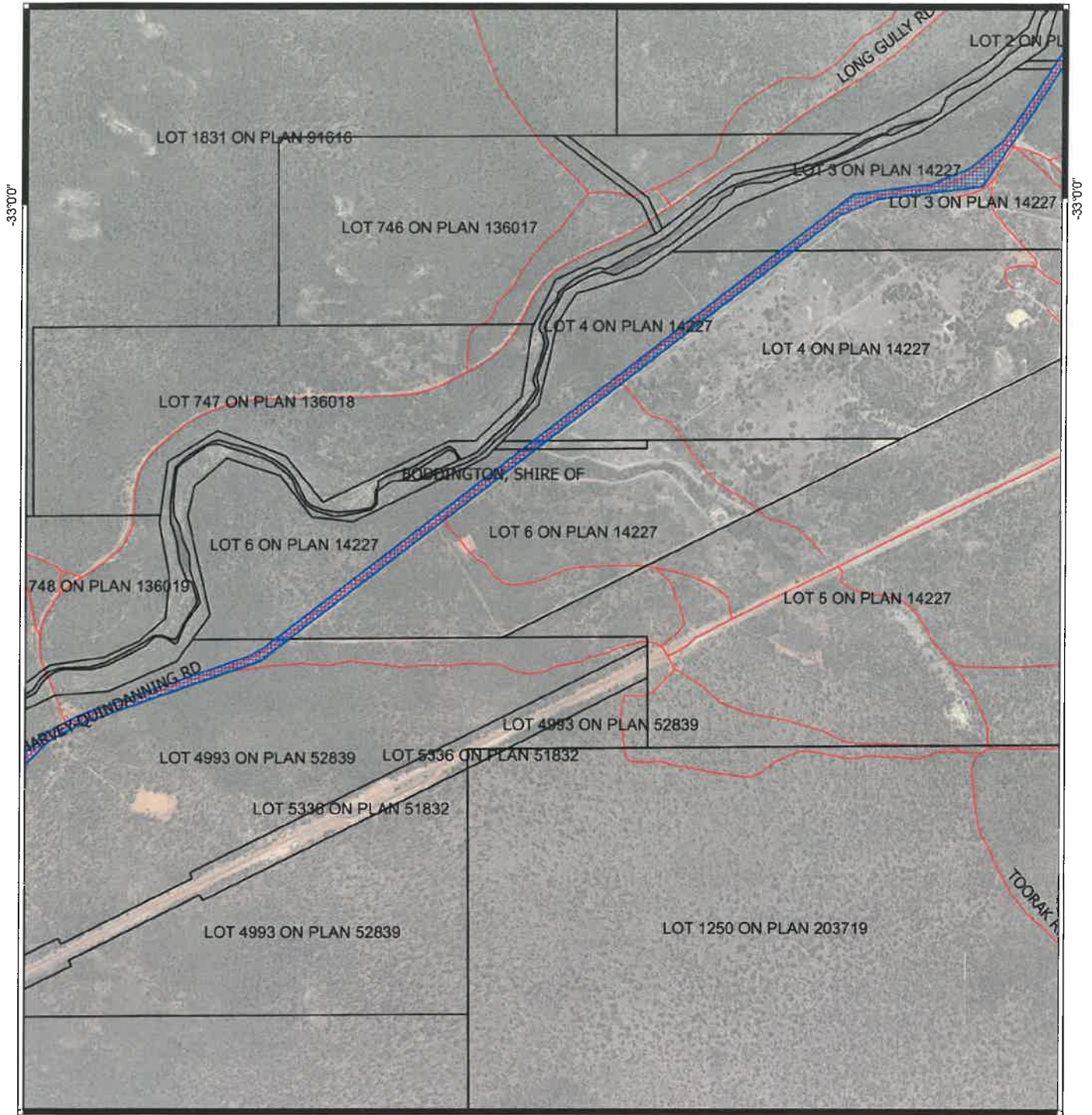
.....Date.....

Officer with delegated authority under Section 20
of the Environmental Protection Act 1986







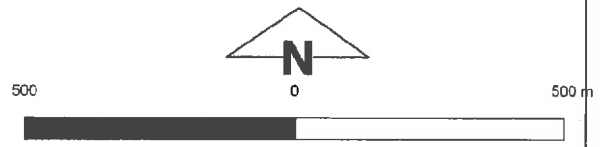
GOVERNMENT OF
WESTERN AUSTRALIA

CPS 8113/1c - Map



Legend

-  CPS areas applied to clear base layers
 -  Cadastre
 -  roads
 -  Local Government Authority
- Virtual Mosaic - WA Now



MGA 94
Geocentric Datum of Australia 1994

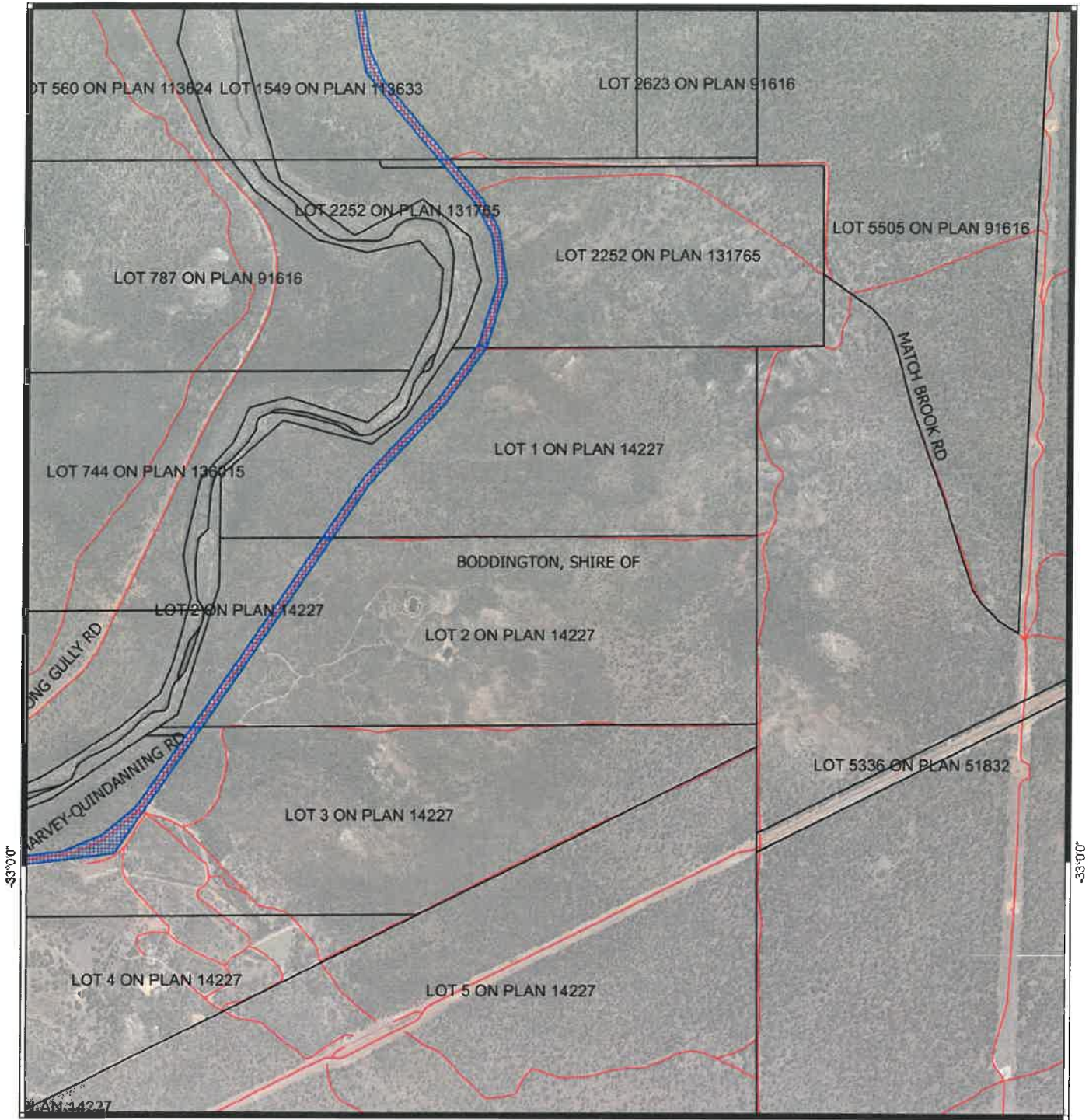
.....Date.....

Officer with delegated authority under Section 20
of the Environmental Protection Act 1986



GOVERNMENT OF
WESTERN AUSTRALIA

CPS 8113/1d - Map




Legend

 CPS areas applied to clear base layers

 Cadastre

 roads

 Local Government Authority
Virtual Mosaic - WA Now



500 0 500 m



MGA 94
Geocentric Datum of Australia 1994

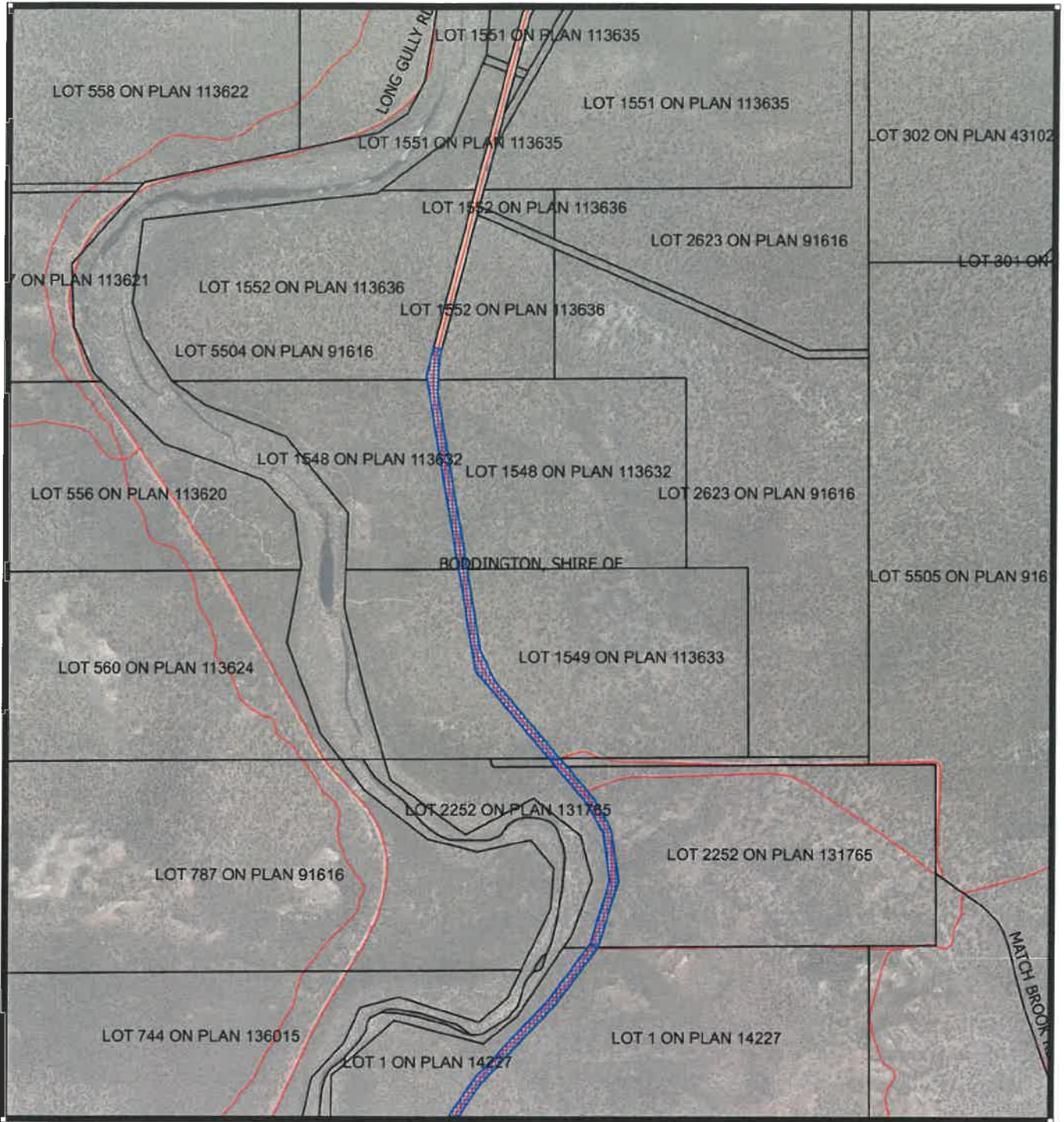
.....Date.....

Officer with delegated authority under Section 20
of the Environmental Protection Act 1986



GOVERNMENT OF
WESTERN AUSTRALIA

CPS 8113/1e - Map



Legend

 CPS areas applied to clear base layers

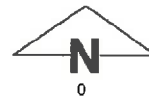
 Cadastre

 roads

 Local Government Authority

Virtual Mosaic - WA Now

500



0

500 m



MGA 94
Geocentric Datum of Australia 1994

.....Date.....

Officer with delegated authority under Section 20
of the Environmental Protection Act 1986



GOVERNMENT OF
WESTERN AUSTRALIA