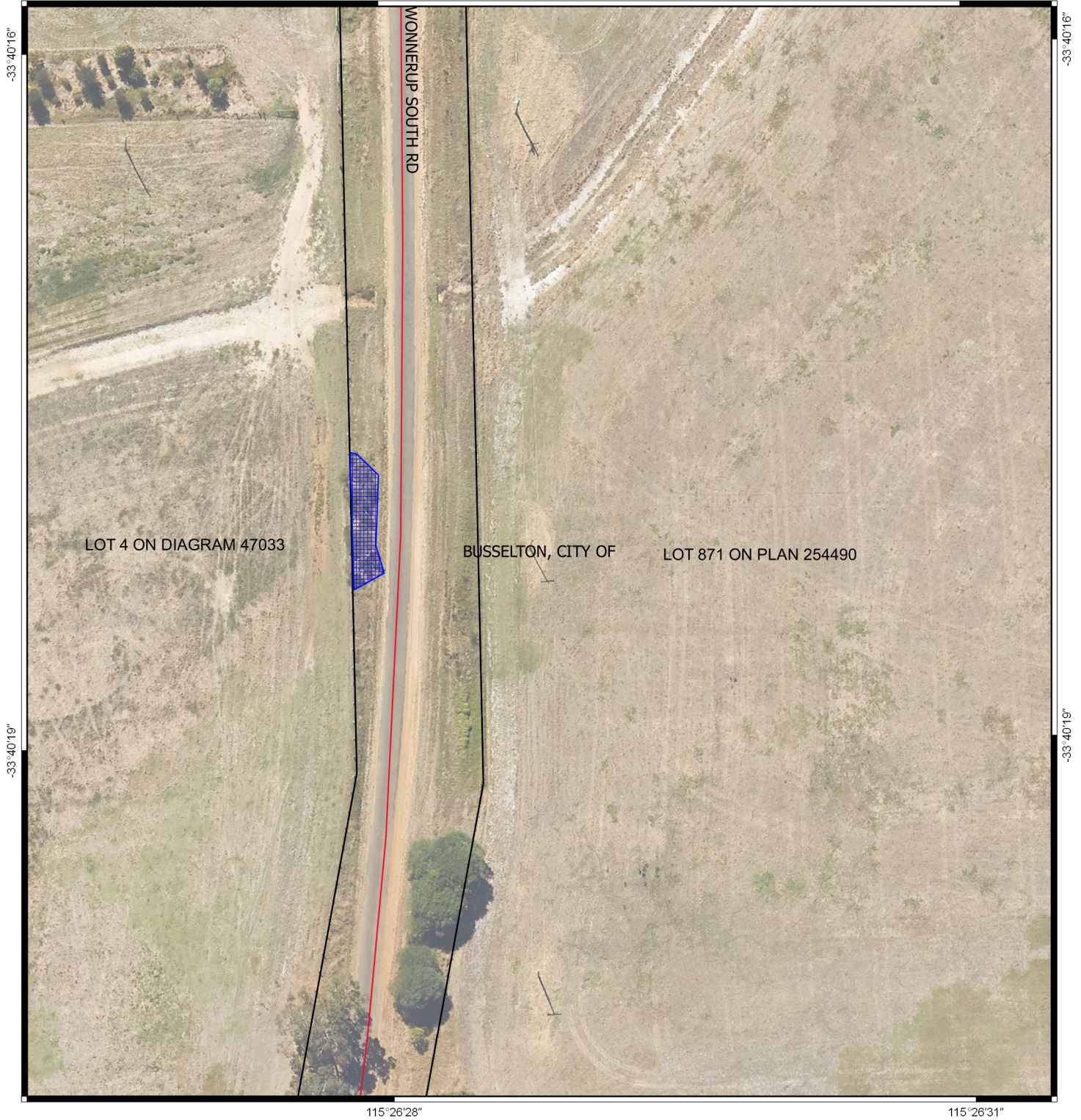



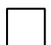

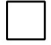
CPS 8115/1 - Map

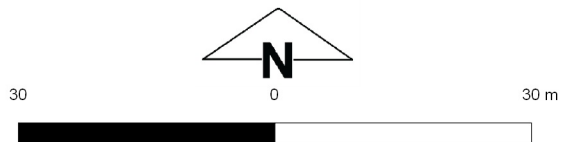
115°26'28"

115°26'31"



Legend

-  CPS areas applied to clear base layers
-  Cadastre
-  roads
-  Local Government Authority
- Virtual Mosaic - WA Now



MGA 94
Geocentric Datum of Australia 1994

.....Date.....

Officer with delegated authority under Section 20
of the Environmental Protection Act 1986



**GOVERNMENT OF
WESTERN AUSTRALIA**