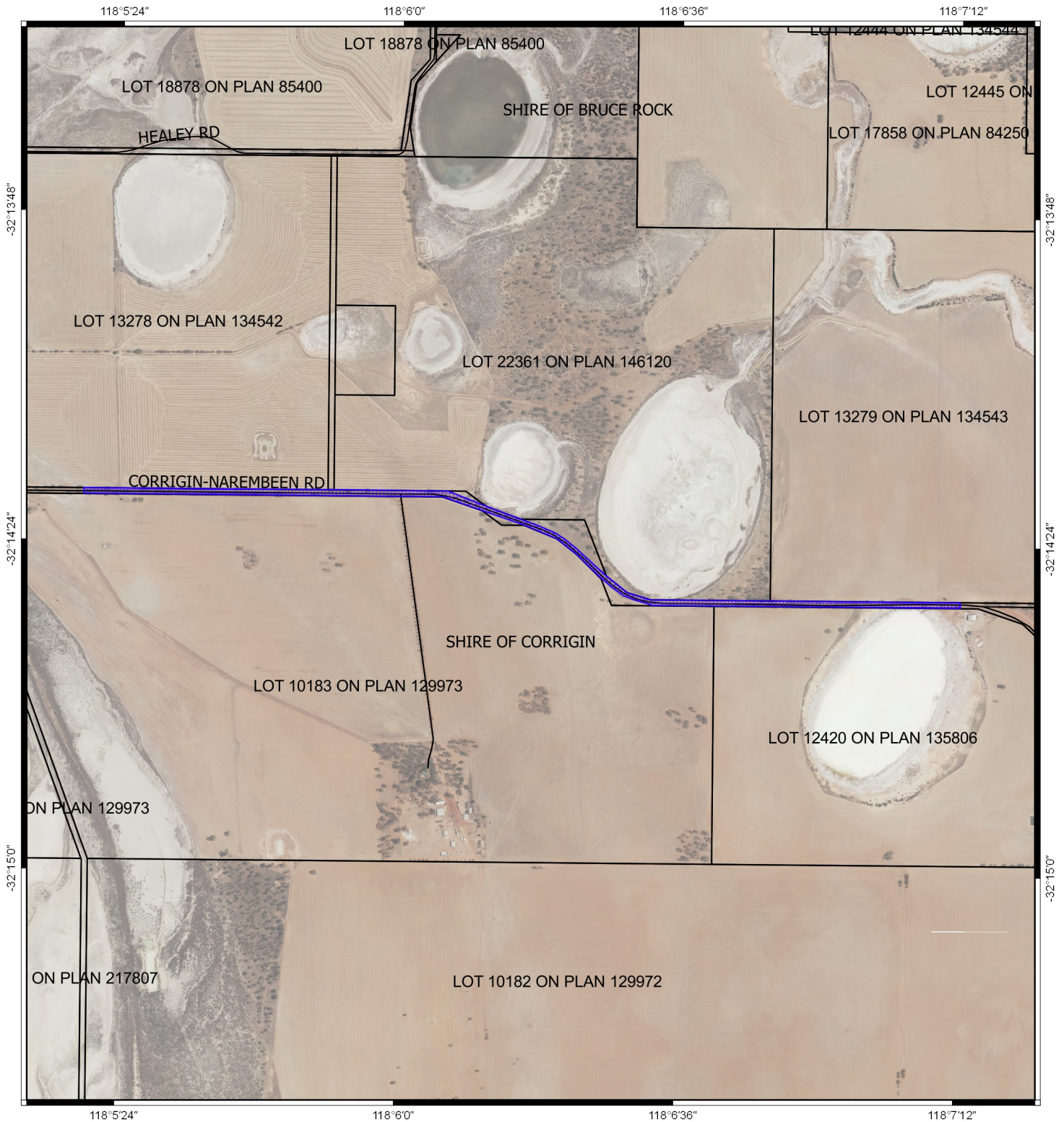
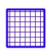
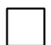

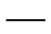


CPS 8140/1 - Map



Legend

-  CPS areas applied to clear base layers
-  Cadastre
-  LOCAL_GOV_AUTHORITIES_DLI
-  roads



MGA 94
Geocentric Datum of Australia 1994

Date.....

Officer with delegated authority under Section 20
of the Environmental Protection Act 1986



**GOVERNMENT OF
WESTERN AUSTRALIA**