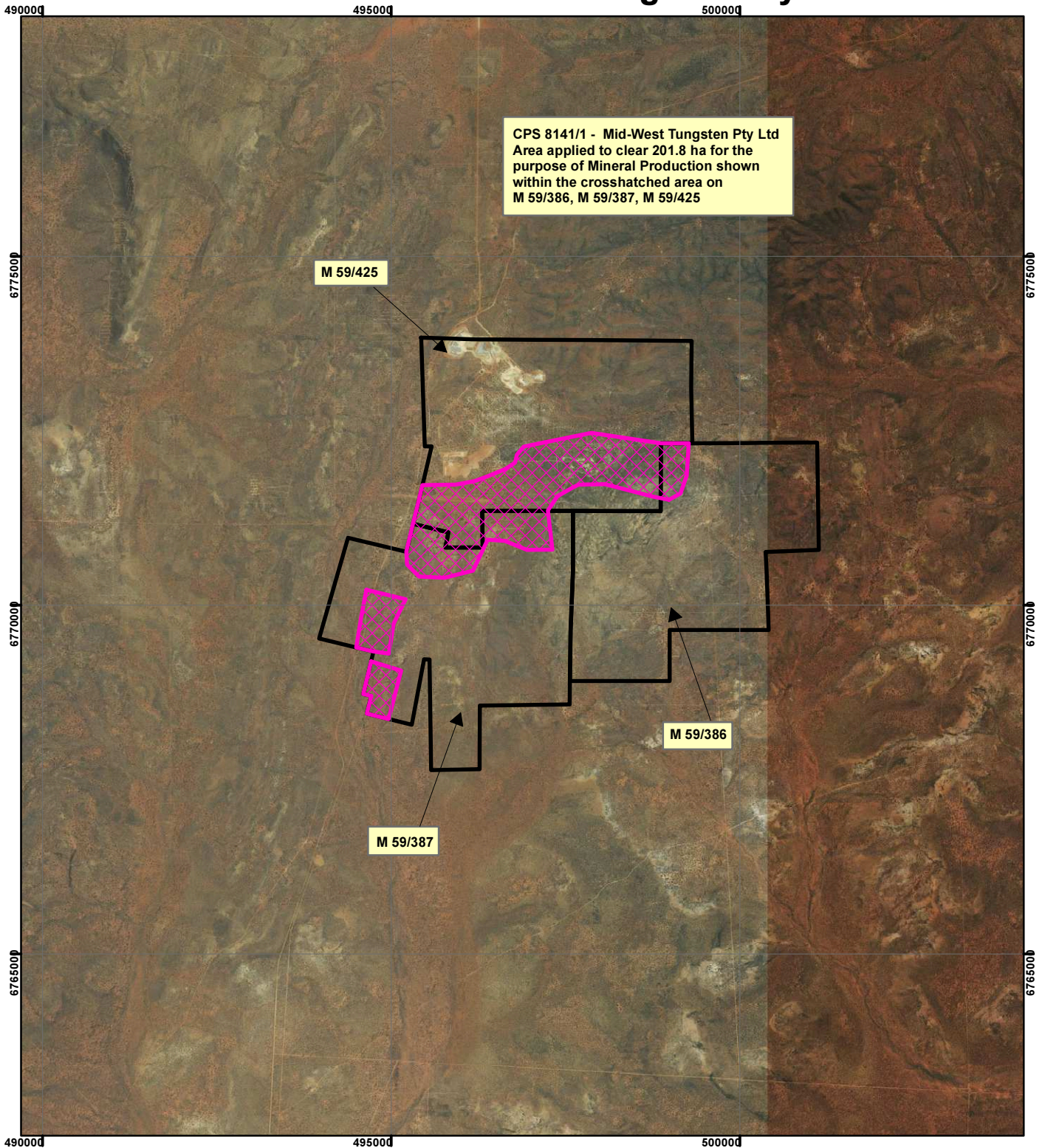


CPS 8141/1 - Mid-West Tungsten Pty Ltd




CPS 8141/1 - Mid-West Tungsten Pty Ltd
 Area applied to clear 201.8 ha for the
 purpose of Mineral Production shown
 within the crosshatched area on
 M 59/386, M 59/387, M 59/425

M 59/425




M 59/386

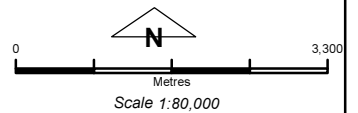
M 59/387

Legend

 Clearing Instruments

TENID

-  M 5900386
-  M 5900387
-  M 5900425



Geocentric Datum Australia 1994

Note: the data in this map have not been projected. This may result in geometric distortion or measurement inaccuracies.

..... Date

Officer with delegated authority under Section 20 of the Environmental Protection Act 1986

Information derived from this map should be confirmed with the data custodian acknowledged by the agency acronym in the legend.

