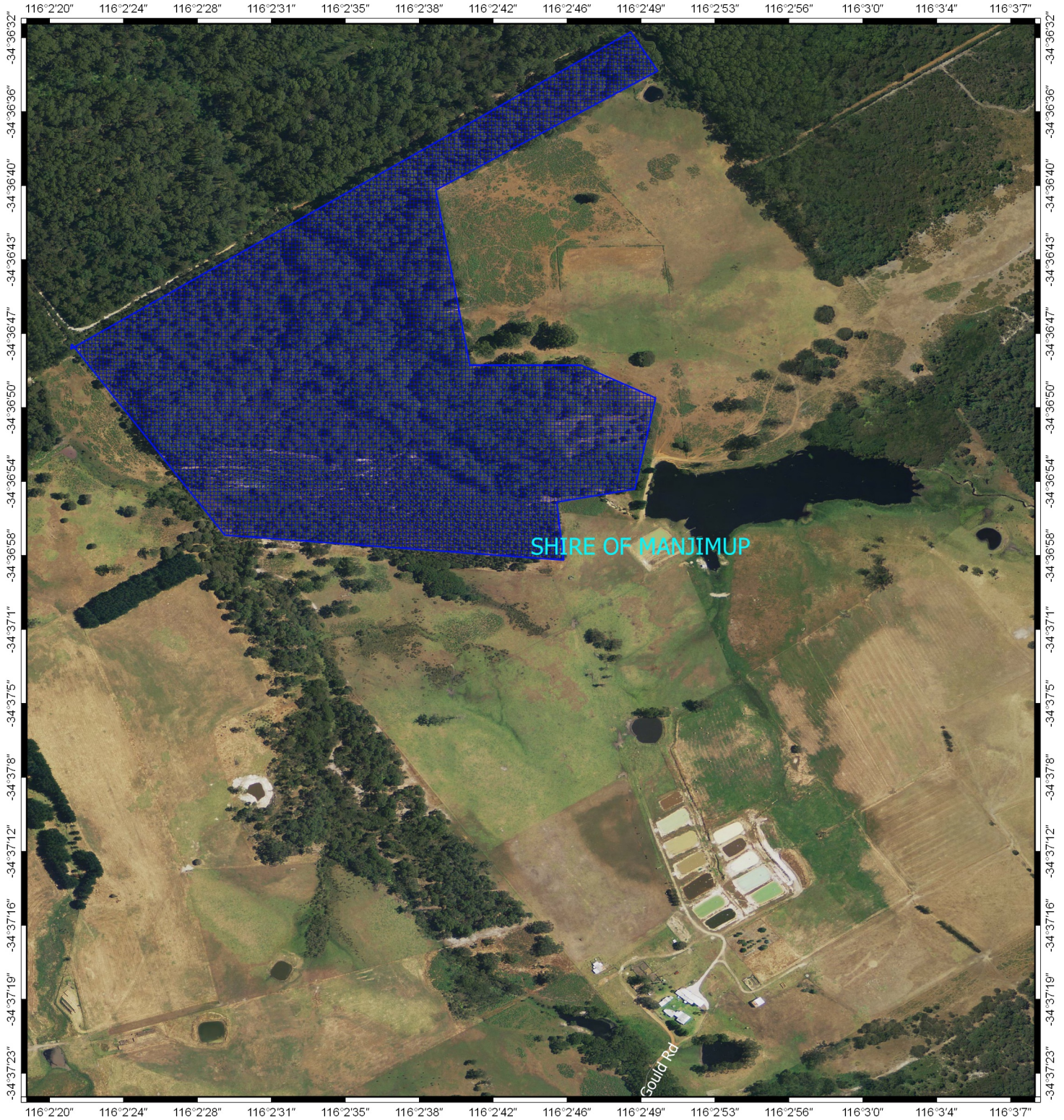
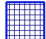




CPS 8157/1 - Map



Legend

-  CPS areas applied to clear
- Transportation
- Roads
-  Local Rd - Other
- Cadastre, LGA and Town Boundaries
-  Local Government Authorities
- Wa Now



0 100 200 300 400 m



MGA 94
Geocentric Datum of Australia 1994

Officer with delegated authority under Section 20
of the Environmental Protection Act 1986



GOVERNMENT OF
WESTERN AUSTRALIA