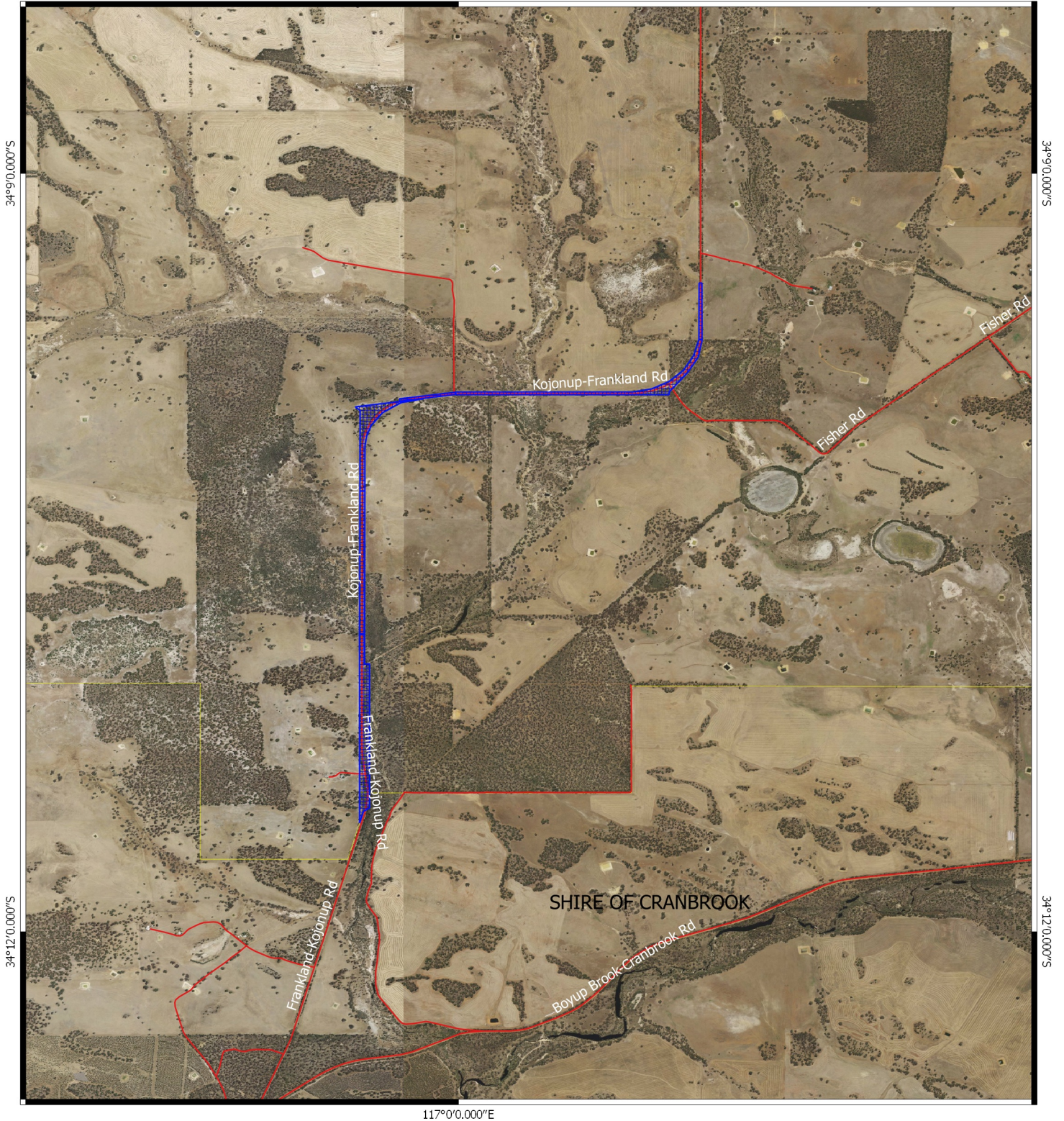


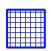


CPS 8173/1 - Map

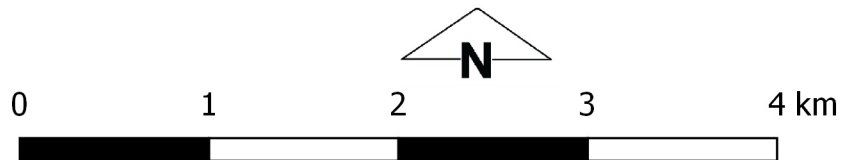
117°0'0.000"E



117°0'0.000"E

Legend

-  Areas applied to clear
-  Road Centrelines
-  Local Government Authorities



MGA 94
Geocentric Datum of Australia 1994

.....DRAFT.....date.....

Officer with delegated authority under Section 20
of the Environmental Protection Act 1986



GOVERNMENT OF
WESTERN AUSTRALIA