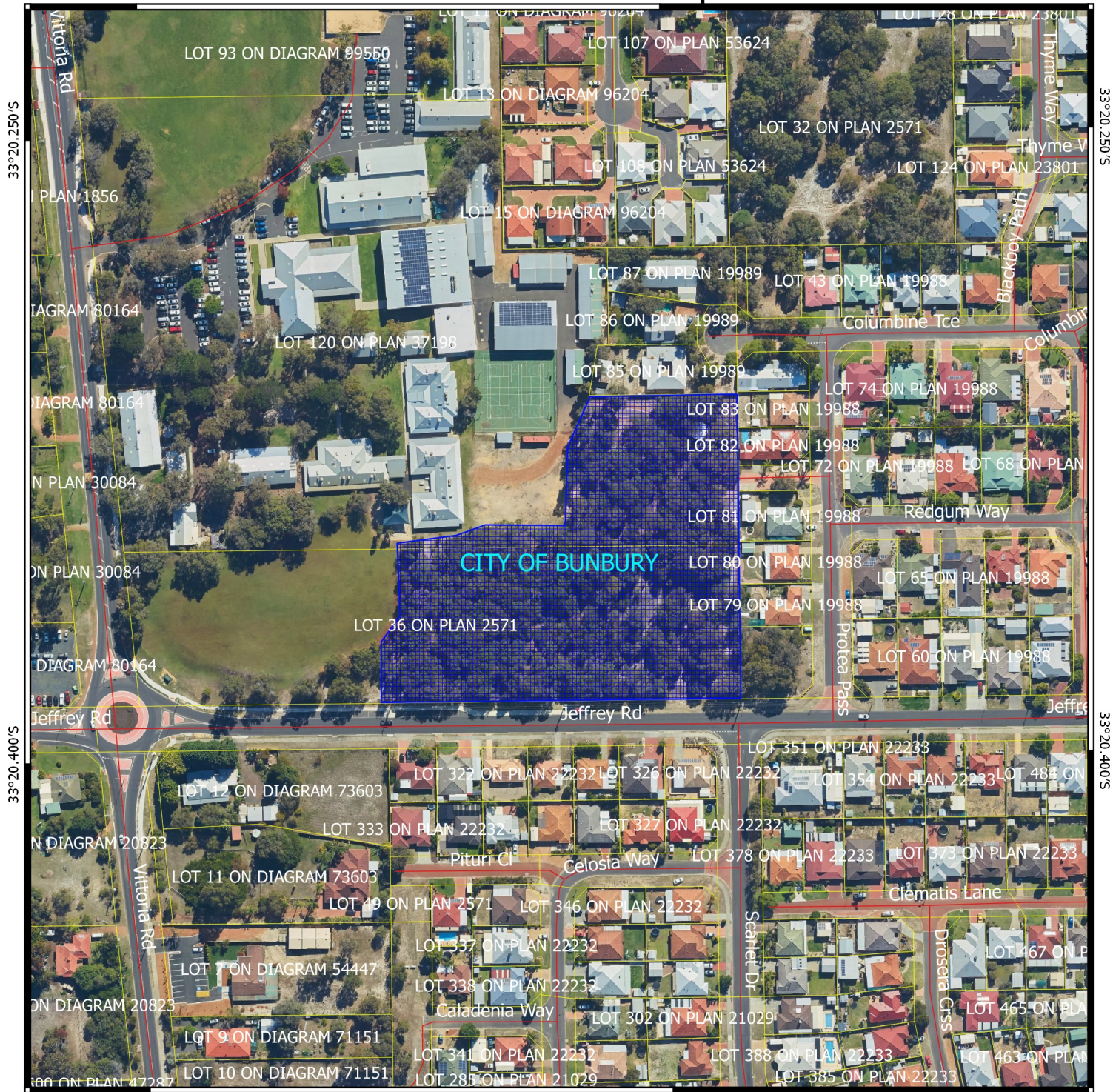


115°40.800'E

CPS 8182/1 Map

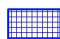



115°40.950'E



115°40.800'E

115°40.950'E

Legend

-  CPS areas applied to clear
-  Local Government Authorities
-  Roads
-  Cadastre

Image



0 50 100 150 200 m



MGA 94
Geocentric Datum of Australia 1994

..... Date

Officer with delegated authority under Section 20
of the Environmental Protection Act 1986



**GOVERNMENT OF
WESTERN AUSTRALIA**

WA Crown Copyright 2018

