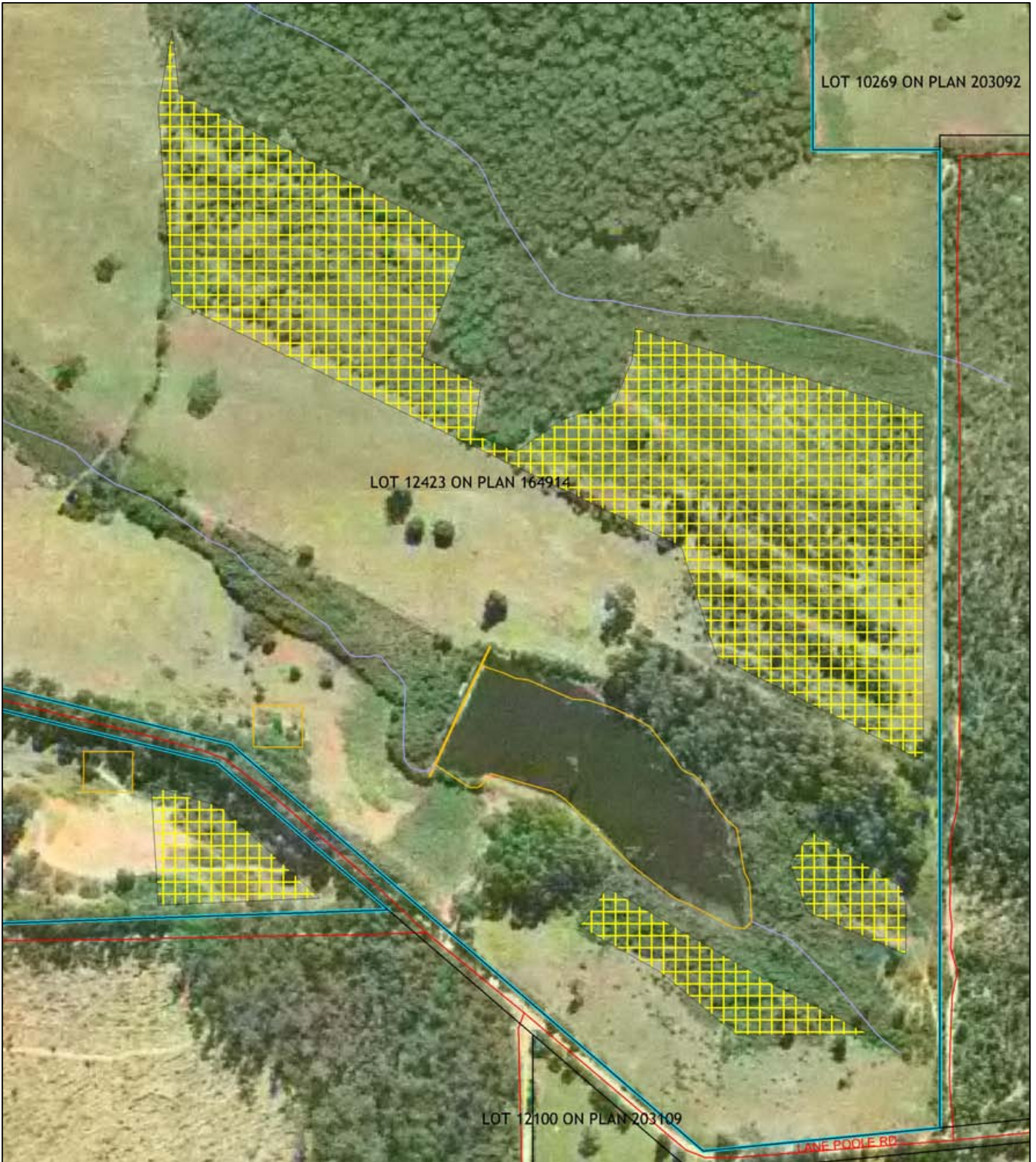


# Plan 82/1



## LEGEND

Land parcels related to instrument

### Clearing Instruments

- Areas Approved to Clear
- Road Centrelines - DLI 1/5/04
- Cadastre - DLI 1/09/04
- Walpole 1.4m Orthomosaic - DOLA 99
- Hydrography, linear - DOE 1/2/04

Area Subject to Inundation (cont)

- Braided Stream Area
- Claypan
- Coastal Waterline
- Dam Wall
- Dam Wall - carrying road
- Drain - major
- Drain - minor
- Earth Dam
- Estuarine
- Flood Limit Area
- Flow Direction Arrow
- Foreshore Flats or Sandbank
- Groyne Area
- Lake - artificial (cont)

- Lake - non-perennial
- Lake - perennial
- Levee Bank
- Marine Construction - wharf/jetty
- Marsh Area
- Natural Pool - non-perennial
- Natural Pool - perennial
- Reef Area
- Rock Awash Offshore
- Sump
- Supply Channel
- Swamp - non-perennial
- Swamp - perennial
- Tidal Flat (cont)

- Wash Area
- Water Reservoir
- Watercourse - indefinite
- Watercourse - major, non-perennial
- Watercourse - major, perennial
- Watercourse - minor, non-perennial
- Watercourse - minor, perennial
- Watercourse Bank - non-perennial
- Watercourse Bank - perennial
- Waterfalls



0 150 m

Scale 1:5000

(Approximate when reproduced at A4)

Geocentric Datum Australia 1994

*Note: the data in this map have not been projected. This may result in geometric distortion or measurement inaccuracies.*

..... Date .....

Derek Carew-Hopkins  
Chief Executive Officer, Department of Environment

Information derived from this map should be confirmed with the data custodian acknowledged by the agency acronym in the legend.