

CPS 8220/1 -Context Map

115°40.800'E

115°42.000'E

115°43.200'E

115°44.400'E

31°40.800'S

31°42.000'S

31°43.200'S

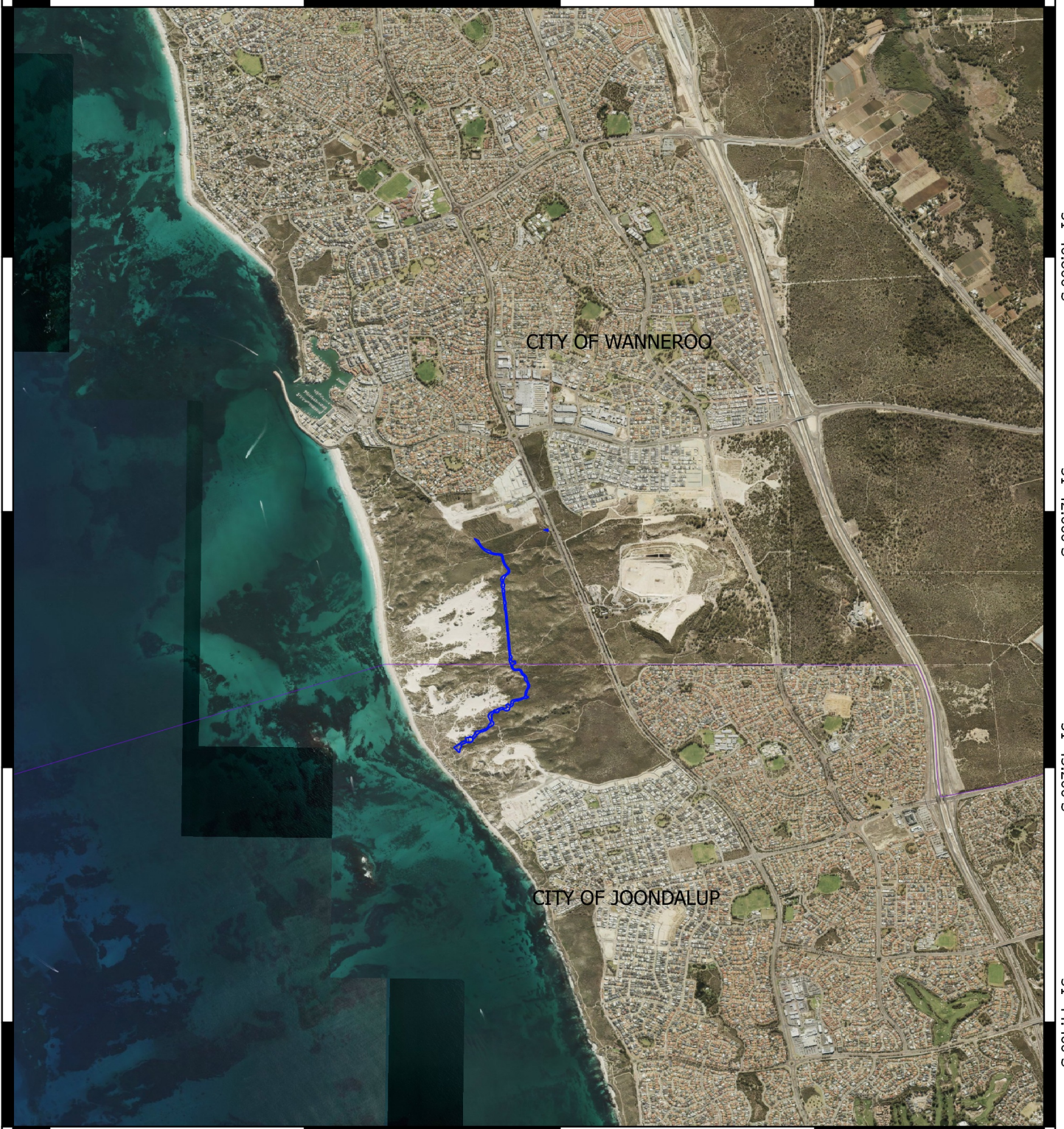
31°44.400'S

31°40.800'S

31°42.000'S

31°43.200'S

31°44.400'S



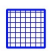
115°40.800'E

115°42.000'E

115°43.200'E

115°44.400'E

Legend

 Areas applied to clear base layers

 Local Government Authorities

Image



0 750 1500 2250 3000 m



MGA 94
Geocentric Datum of Australia 1994

.....DRAFT.....date.....

Officer with delegated authority under Section 20
of the Environmental Protection Act 1986



GOVERNMENT OF
WESTERN AUSTRALIA