

CPS 8221/1 - Context Map

117°43.800'E

117°44.400'E

117°45.000'E

117°45.600'E

117°46.200'E

31°42.000'S

31°42.600'S

31°43.200'S

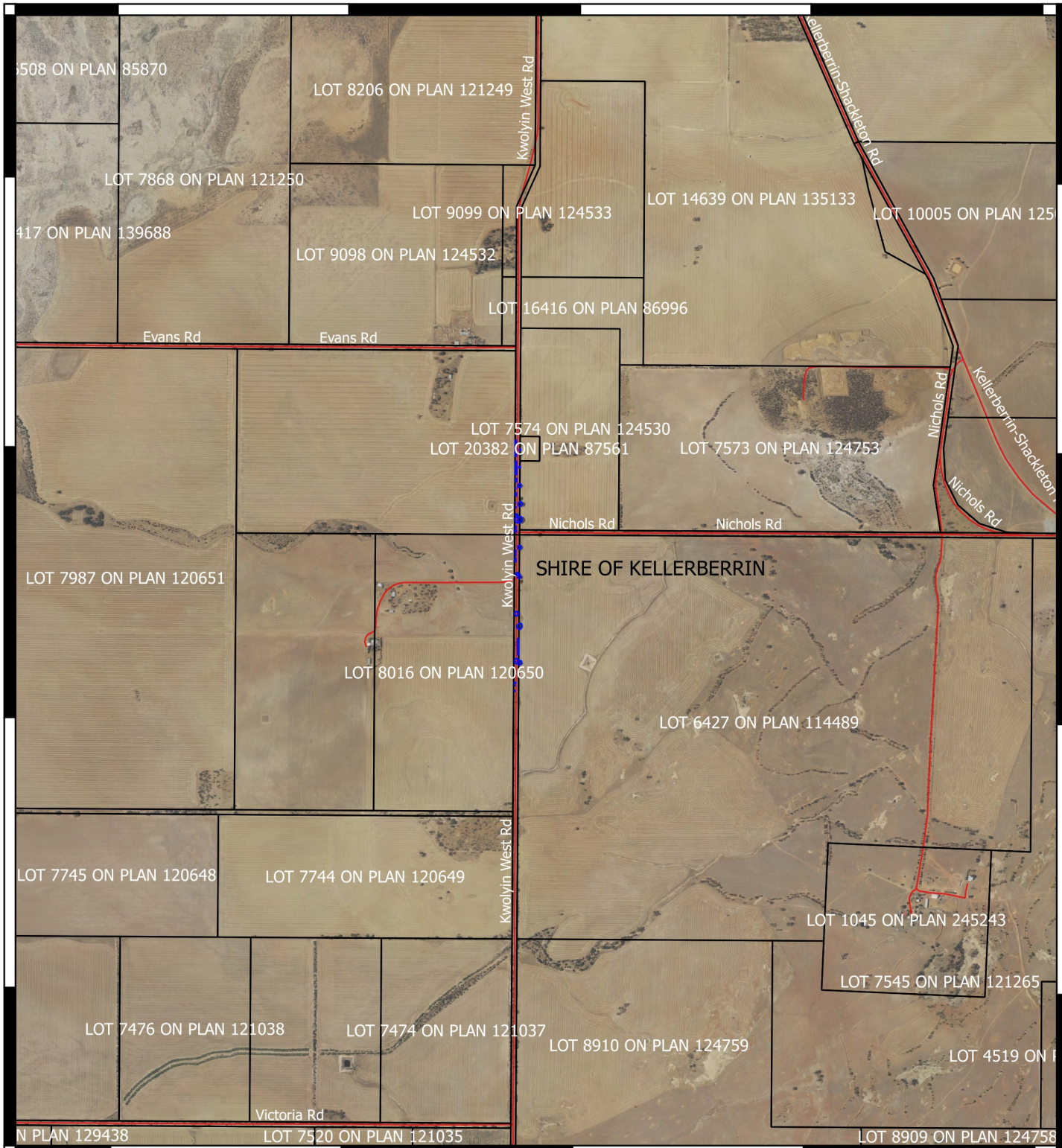
31°43.800'S

31°42.000'S

31°42.600'S

31°43.200'S

31°43.800'S



117°43.800'E

117°44.400'E

117°45.000'E

117°45.600'E

117°46.200'E

Legend

Areas applied to clear base layers

Local Government Authorities

cadastre

Road Centrelines

Image



0 250 500 750 1000 1250 m



MGA 94
 Geocentric Datum of Australia 1994

.....DRAFT.....date.....

Officer with delegated authority under Section 20
 of the Environmental Protection Act 1986



GOVERNMENT OF
 WESTERN AUSTRALIA