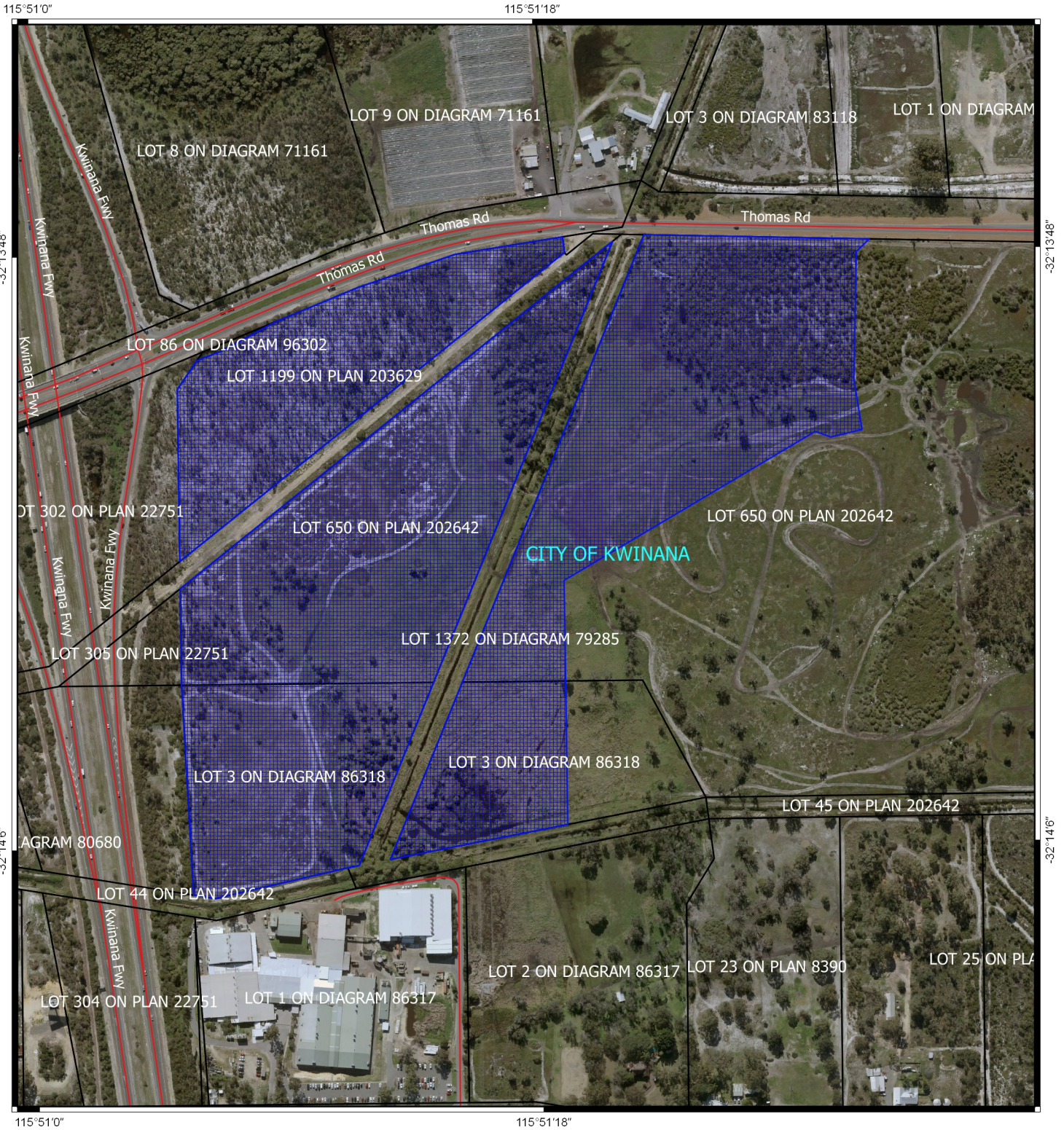




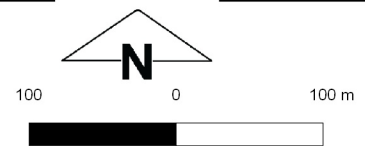


# CPS 8243/1 - Map



## Legend

-  Areas applied to clear base layers
-  cadastre
-  Local Government Authorities
-  Roads
- Image



MGA 94  
Geocentric Datum of Australia 1994

Officer with delegated authority under Section 20  
of the Environmental Protection Act 1986



**GOVERNMENT OF  
WESTERN AUSTRALIA**