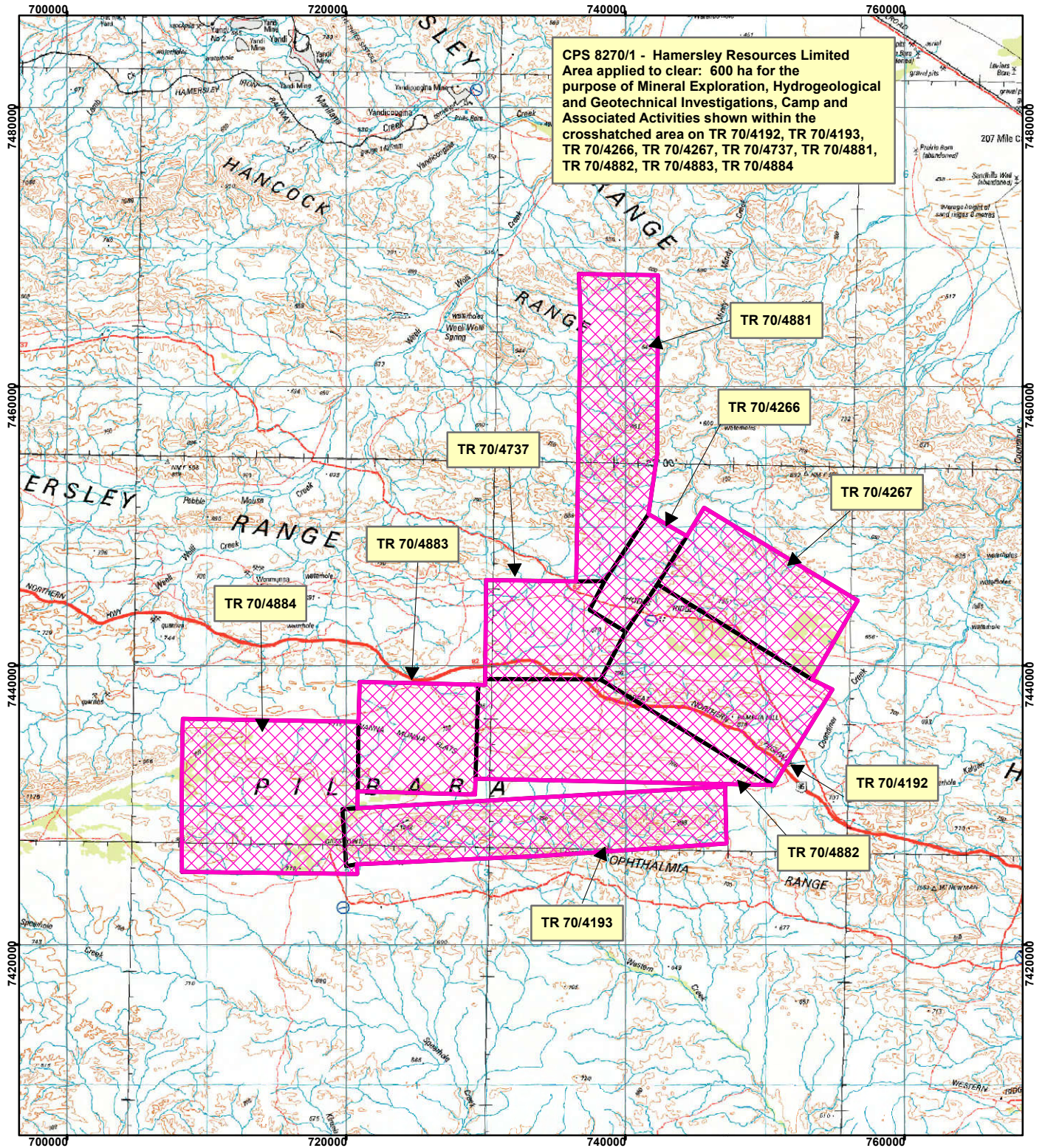




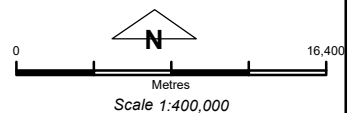
CPS 8270/1 - Hamersley Resources Limited

CPS 8270/1 - Hamersley Resources Limited
Area applied to clear: 600 ha for the
purpose of Mineral Exploration, Hydrogeological
and Geotechnical Investigations, Camp and
Associated Activities shown within the
crosshatched area on TR 70/4192, TR 70/4193,
TR 70/4266, TR 70/4267, TR 70/4737, TR 70/4881,
TR 70/4882, TR 70/4883, TR 70/4884



Legend

-  Clearing Instruments
-  Mining Tenements



Geocentric Datum Australia 1994

Note: the data in this map have not been projected. This may result in geometric distortion or measurement inaccuracies.

..... Date

Officer with delegated authority under Section 20 of
the Environmental Protection Act 1986

Information derived from this map should be
confirmed with the data custodian acknowledged
by the agency acronym in the legend.

