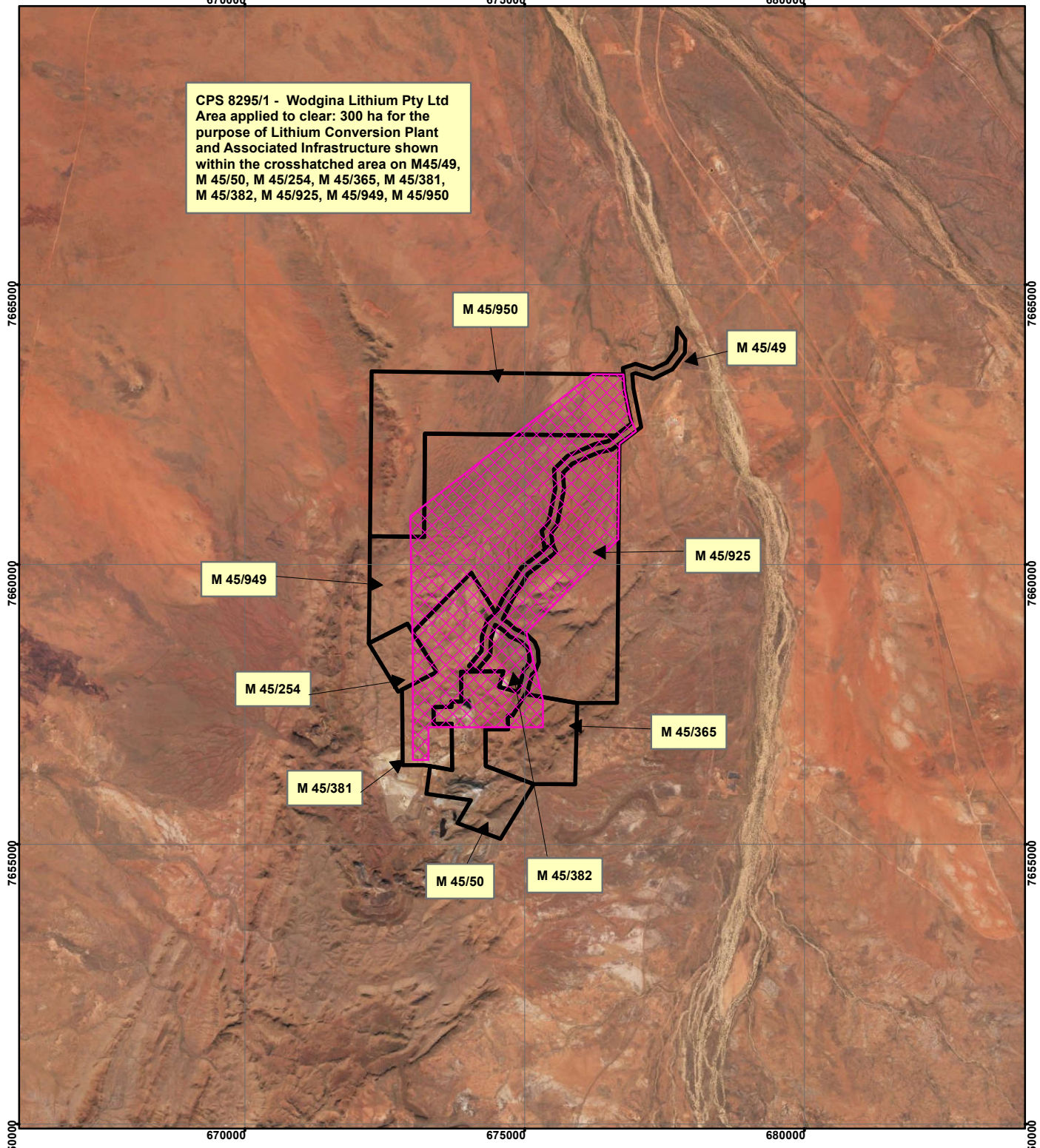




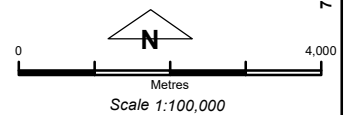
CPS 8295/1 - Wodgina Lithium Pty Ltd

CPS 8295/1 - Wodgina Lithium Pty Ltd
Area applied to clear: 300 ha for the
purpose of Lithium Conversion Plant
and Associated Infrastructure shown
within the crosshatched area on M45/49,
M 45/50, M 45/254, M 45/365, M 45/381,
M 45/382, M 45/925, M 45/949, M 45/950



Legend

-  Clearing Instruments
-  Mining Tenements



Geocentric Datum Australia 1994

Note: the data in this map have not been projected. This may result in geometric distortion or measurement inaccuracies.

..... Date

Officer with delegated authority under Section 20 of the Environmental Protection Act 1986

Information derived from this map should be confirmed with the data custodian acknowledged by the agency acronym in the legend.

