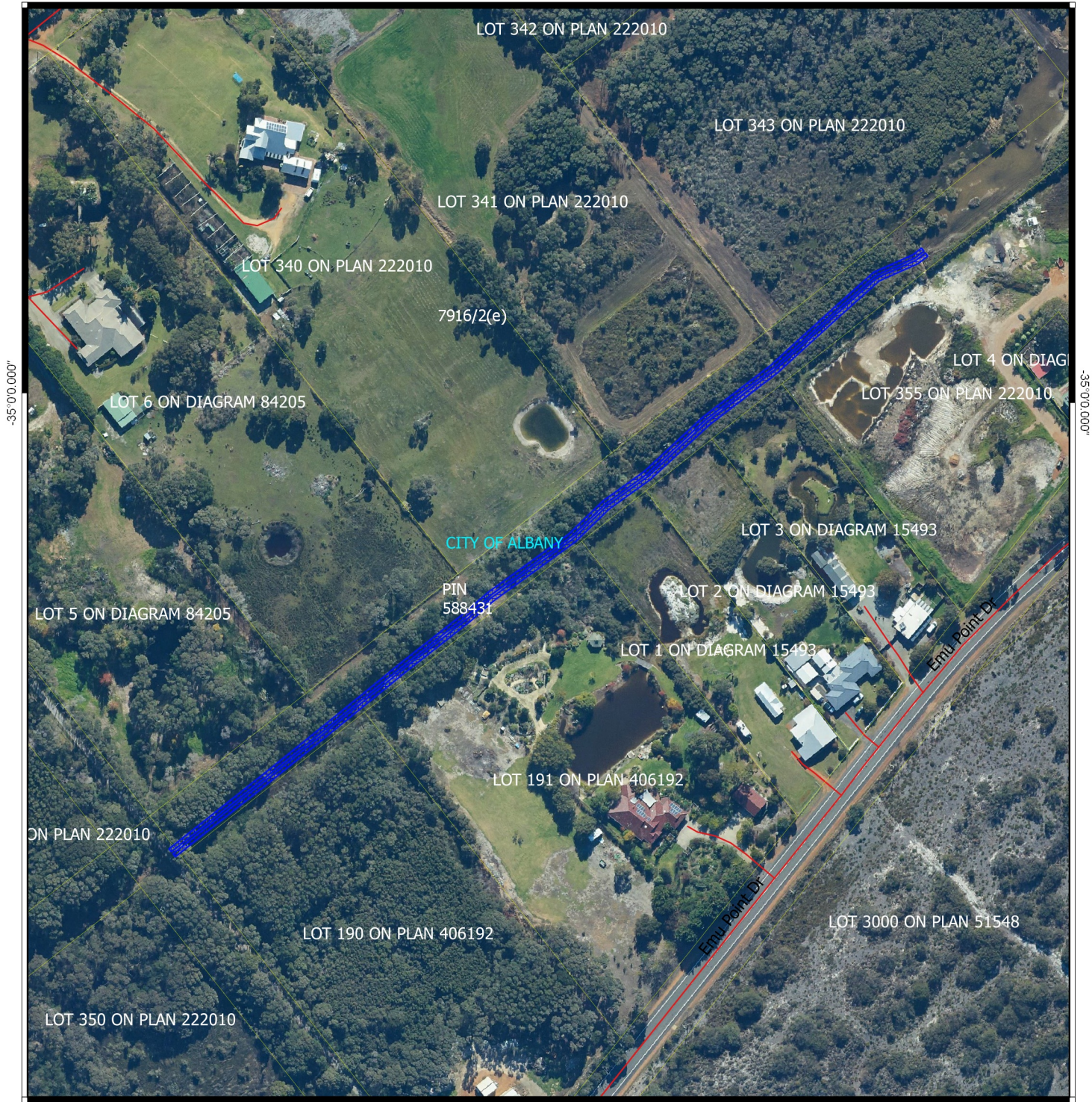






CPS 8299/1 - Map

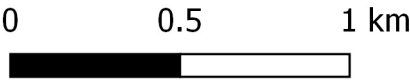


Legend

-  CPS areas applied to clear
-  Local Government Authorities
-  Cadastre
-  Roads
- Image



MGA 94  
Geocentric Datum of Australia 1994



Officer with delegated authority under Section 20  
of the Environmental Protection Act 1986



GOVERNMENT OF  
WESTERN AUSTRALIA  
WA Crown Copyright 2018