



14th September 2017

Attention: Hettie Enderes

RE: Tree Survey & Risk Assessment – Turner Caravan Park

Tree Survey & Risk Assessment – Turner Caravan Park

Prepared for The Shire of Augusta – Margaret River

Prepared by: Brett Moir

Dip. Hort (Arboriculture)
Quantified Tree Risk Assessment –
Licensed User No: 3417

PO Box 5227, West Busselton WA 6280
PH: 08 9755 4361 | MOB: 0488 119 051
E: brett@arborguy.com.au

Table of Contents

1.0	<u>Introduction</u>	2
2.0	<u>Methodology</u>	2
3.0	<u>Site Description</u>	3
4.0	<u>QTRQ - Target Range Appraisal</u>	4
5.0	<u>Overview of Recommended Works</u>	5
6.0	<u>Summary of Findings</u>	6
7.0	<u>Long-term Management Considerations</u>	6
8.0	<u>Disclaimer</u>	7

Appendix A:	Schedule of Trees at Turner Caravan Park
Appendix B:	Visual Tree Assessment note
Appendix C:	Quantified Tree Risk Assessment note
Appendix D:	Tree Location Maps

Tree Survey & Risk Assessment – Turner Caravan Park

1.0 Introduction

- 1.1 Instructions were received from Hettie Enderes, Caravan Park Manager of Turner Caravan Park to undertake an assessment of trees within Turner Caravan Park.
- 1.2 This assessment will make recommendations for mitigation works to reduce tree risk.

2.0 Methodology

- 2.1 A site assessment was carried out through the period 23/08/17 – 04/09/17.
- 2.2 The assessment was carried out from ground level using the Visual Tree Assessment method [See Appendix B]. No aerial or belowground inspections were conducted.
- 2.3 The risk of harm from tree failure was determined using the Quantified Tree Risk Assessment [QTRA] system. [See Appendix C].
- 2.4 The trees were surveyed using a Trimble GeoXH GPS device to record each trees location in northing and easting and to collect the base tree data. This information is recorded in Appendix A – Schedule of Trees Turner Caravan Park.
- 2.5 Only trees in excess of 200mm in diameter at 1.5m above ground were recorded unless an obvious hazard was evident. Trees with a trunk diameter of <200mm are for the most part young, vigorous and not prone to failure. In the event that such a tree does fail, the risk of harm is usually low. Hedges and shrubs were excluded from the assessment.

For trees located in bush areas, only the trees along the edge of the bush were assessed.

- 2.6 Each surveyed tree was numbered by affixing an aluminium tag to the trunk at approximately 2.0m above ground. These numbered tags correspond to the tree numbers recorded in Appendix A – Schedule of Trees Turner Caravan Park and the tree location maps.

Tree Survey & Risk Assessment – Turner Caravan Park

3.0 Site Description

- 3.1 The site of this survey is a Shire of Augusta Margaret River owned caravan park located in Augusta, Western Australia.

Located on the banks of the Blackwood River, the park comprises over 200 sites. These sites are made up of Chalets, powered and unpowered caravan and camping sites, annual holiday sites with permanent cabins, long-term sites with permanent cabins/caravans, two manager's residences and a site office.

There are a number of ablution blocks, cooking, and barbecue facilities and laundry facilities.

- 3.2 644 trees were assessed within the park. This tree population is comprised of 23 different species.

Genus & Species	Number of Trees
<i>Agonis flexuosa</i>	240
<i>Araucaria heterophylla</i>	3
<i>Callistemon</i> sp	7
<i>Corymbia calophylla</i>	58
<i>Cupressus sempervirens</i>	5
<i>Erythrina</i> sp	3
<i>Eucalypt</i> sp	1
<i>Eucalyptus cinerea</i>	1
<i>Eucalyptus conferruminata</i>	10
<i>Eucalyptus diversicolor</i>	105
<i>Eucalyptus patens</i>	10
<i>Eucalyptus robusta</i>	4
<i>Eucalyptus rudis</i>	32
<i>Eucalyptus sideroxylon</i>	1
<i>Ficus</i> sp	2
<i>Liquidambar styraciflua</i>	1
<i>Melaleuca</i> sp	151
<i>Melia azedarach</i>	1
<i>Metrosiderous excelsa</i>	5
<i>Pittosporum</i> sp	1
<i>Salix</i> sp	1
unidentified	1
<i>Zanthoxylum piperitum</i>	1

4.0 QTRQ - Target Range Appraisal

- 4.1 The QTRA system is structured such that the initial assessment is an overview of the site use in order to determine the likelihood of a tree part striking a target (person, property, vehicle) rather than the likelihood of a tree part failing. It stands to reason that a tree part that is likely to fail but unlikely to strike a target poses little risk.

The assessed Risk of Harm for each tree is termed the Risk Index. The Risk Index uses K to represent thousand and M to represent million.

For example: if the annualised risk of harm is 1/10,000, the Risk Index is 10K.

- 4.2 For the purpose of calculating the Risk Index of any given tree using the QTRA system it is necessary to allocate trees with a target range. The QTRA system comprises six target ranges based on frequency of occupancy of the target zone by people and vehicles and the value of property targets. Target Range 1 is the highest range and 6 the lowest.

- 4.3 Park occupancy figures provided by Hettie Enderes, Park Manager of Turner Caravan Park were used to determine the appropriate Target Range to apply to this assessment.

The occupancy figures were averaged to determine an average occupancy of 32% across 264 sites.

- 4.4 The nature of the site is such that campers are given to spending long periods each day 'in camp' and as such are exposed to tree hazards in these areas for extended time periods.

- 4.5 Assuming each visitor occupies a given campsite for 12 hrs per/day then there is a total of 1008hrs occupancy hours each day.

- 4.6 $1008 \text{ hours} / 264 \text{ sites} = 3.8 \text{ hours of occupation per/site per/day}$. This range of human occupation falls within Target Range '1' on the QTRA Calculator [Human Occupation of the Target Area of > 2.5hrs per/day]. Target Range '1' was used to assess risk for all trees within the site.

5.0 Overview of Recommended Works

- 5.1 The degree of risk willing to be accepted by the Shire of Augusta-Margaret River in regards to this site and trees in particular is for the Shire to determine. It is however widely accepted that a risk of harm of 1/10,000 or less is 'broadly acceptable' when imposed on the general public.
- 5.2 88 trees (13.6% of the total tree population) were assessed as having a risk index of 10K or less. These trees pose a risk of harm that is greater than what would typically be considered acceptable to impose on the general public.
- 5.3 Of these 88 trees, 20 trees with a Risk Index of 10K or less were recommended for removal. This represents 3% of the 644 trees surveyed.
- 5.4 Where considered feasible by the assessing Arborist, rather than recommending the removal of a tree in its entirety, the recommendation of 'Retrenchment Pruning' is made. This is the process of shortening an over-mature trees crown structure to mimic the natural aging process whereby the crown of a declining tree retains its overall biomechanical integrity by becoming smaller through the progressive shedding of branches and the development of the lower crown (retrenchment).

There are numerous benefits to retrenchment over total removal including:

- o The retention of the tree in the landscape
- o Retention of habitat hollows
- o Reduced cost compared to total tree removal

6.0 Summary of Findings

- 6.1 86% of the assessed trees were determined to have an annualised risk of harm of less than 1/10,000 (QTRA Risk Index 10K). These trees pose a risk of harm that would generally be considered 'broadly acceptable'.
- 6.2 For the 88 trees with a QTRA Risk Index of 10 or less it is advised that the recommended works be carried out within 4 weeks from the date of this assessment or other measures be undertaken to restrict entry to people from the 'target zone' of these trees.
- 6.3 For trees in poor health that are recommended for removal it is advised that these be removed as for the high risk trees. Although dead trees may not immediately pose a high risk and it is sometimes true that dead trees actually become safer for a time after they die, it is recommended that these trees be removed sooner rather than waiting for them to become high risk trees.
- 6.4 For those trees that have an acceptable risk index but still have recommended works recorded for them it is advised that these works be carried out as maintenance budgets allow.

7.0 Long-term Management Considerations

- 7.1 Many of the *Agonis flexuosa* (Peppermint Tree) throughout the foreshore area are over-mature trees in declining health. These trees exhibit advanced decay of structural roots and in the lower trunk. I would expect many of these trees to have a Safe Useful Life Expectancy (SULE) of less than 10 years.

Replacement plantings through this area are well advanced and should soften the impact of the eventual removal of these trees.

- 7.2 The *Melaleuca sp* growing in groves within the tent site areas of the park are well adapted to the wet conditions found in these areas. They are however, quite prone to wind-throw as is evident from the number of trees that have previously failed and trees that have partially failed into neighbouring trees.

The risk associated with this species trait is that campers in tents have very little protection from a falling tree. These stands of *Melaleuca sp* will require ongoing maintenance works to reduce the risk of wind-throw especially given the high occupancy rates of the park.

- 7.3 I recommend Turner Caravan park continue with the current annual inspection program in order to determine whether further mitigation work is required to manage the risk of harm from tree failure.

8.0 Disclaimer

The advice contained herein including all attachments has been provided in good faith and based upon the material information available, collected by the consultant or provided by others at the time the advice was given.

- Arbor Guy take no responsibility for the accuracy of information provided to us by the client/clients or any other third party and all such information is assumed to be correct.
- This report is intended to be used only in its complete form and any report or reference to this report must include the complete report attached directly to that submission.
- The extent and level of assessment of each tree or group of trees is detailed in the report and is determined in conjunction with the client usually prior to the assessment. Arbor Guy takes no responsibility for failing to diagnose tree defects that are not relevant to the level of assessment that the tree is subjected to.
- The information contained in this report reflects only the condition of the tree/trees at the time of the inspection.
- Diagrams, maps, and photographs in this report are intended as visual aids and are not necessarily to scale.
- This report may not be reproduced in any form without the written permission of Arbor Guy.
- The findings and recommendations in this report represent the professional opinion of the consultant and are not influenced by the acceptance of the report fee.
- The report fee does not cover the appearance as an expert witness in support of this report and any such appearance will incur additional charges.



APPENDIX A

Schedule of Trees at Turner Caravan Park

Key to Schedule of Trees:

Column Heading	Explanation
Tree No	Unique number corresponding with aluminium tag affixed to tree.
Common Name	English names
Genus & species	Biological classification
Height	Total tree height estimated in metres.
DBH	Trunk diameter at 1.5m above ground estimated in millimetres.
Health	Assessment of current health status of tree.
QTRA Risk Index	<p>The assessed Risk of Harm for each tree is termed the Risk Index. The Risk Index uses K to represent thousand and M to represent million.</p> <p>For example: if the annualised risk of harm is 1/10,000, the Risk Index is 10K.</p> <p>Cells highlighted in RED are those with a Risk Index of 10 or less.</p>
Recommended Works	Recommendation made during the survey and prior to determining each trees Risk Index.
Comments	Additional relevant information
GPS Date	DD-MM-YYYY
Horz Prec	Horizontal precision of GPS position.
X & Y	GPS Coordinates

Tree No	Common Name	Genus & species	Height (m)	DBH (mm)	Health	QTRA Risk Index	Recommended Works	Comments	Horz_Prec	X	Y
	Swamp										
1	Mahogany	Eucalyptus robusta	4	500	Fair	>1M	maintain regrowth to managable size	row of 10 trees lopped to form hedge	0.4	6200550.82	330955.244
2	Paperbark	Melaleuca sp	15	1300	Good	4K	Reduce end-weight	twin stems	1.6	6200546.7	330983.015
3	Paperbark	Melaleuca sp	15	450	Good	4K	Dead Wood	None	0.8	6200545.29	330980.117
4	Paperbark	Melaleuca sp	15	700	Good	4K	Reduce end-weight	decay at base	0.5	6200543.6	330985.459
5	Paperbark	Melaleuca sp	15	700	Good	4K	Brace	consider brace	0.9	6200542.93	330987.394
6	Paperbark	Melaleuca sp	9	600	Good	4K	Reduce end-weight	2 stems - 3rd stem previously removed	1.1	6200538.94	330986.543
7	Paperbark	Melaleuca sp	12	600	Good	10K	None	None	0.6	6200538.81	330985.238
8	Paperbark	Melaleuca sp	16	700	Good	4K	Reduce end-weight	None	0.5	6200534.91	330981.6
9	Paperbark	Melaleuca sp	16	1000	Good	4K	Reduce end-weight	None	0.8	6200538.25	330981.441
10	Paperbark	Melaleuca sp	9	800	Good	4K	Reduce end-weight	None	1	6200539.8	330979.069
11	Paperbark	Melaleuca sp	18	1100	Good	4K	Reduce end-weight	previous stem removed	0.6	6200522.56	330987.241
12	Paperbark	Melaleuca sp	18	1200	Good	4K	Reduce end-weight	None	0.6	6200531.95	330991.484
13	Paperbark	Melaleuca sp	4	300	Poor	1K	Remove Tree	almost dead	0.9	6200534.23	330992.729
14	Paperbark	Melaleuca sp	5	700	Fair	400	Remove Tree	decay at base	0.8	6200526.25	330992.322
15	Pohutakawa	Metrosiderous excelsa	6	700	Good	>1M	None	None	0.5	6200530.95	331005.894
16	Pohutakawa	Metrosiderous excelsa	6	500	Good	>1M	None	None	1.4	6200525.18	331014.22
17	Bottlebrush	Callistemon sp	4	900	Good	>1M	None	multiple stems	1.4	6200548.83	331023.974
18	Peppermint	Agonis flexuosa	4	1000	Good	>1M	None	multiple stems , previous topped	0.5	6200529.45	331033.977
19	Flooded Gum	Eucalyptus rudis	3	600	Fair	>1M	None	previously topped	1.1	6200518.52	331026.194
20	Peppermint	Agonis flexuosa	5	800	Fair	>1M	None	previously topped	1.4	6200503.42	331053.454
21	Pohutakawa	Metrosiderous excelsa	4	600	Good	>1M	None	multiple stems	0.7	6200509.44	331065.048
22	Pohutakawa	Metrosiderous excelsa	4	600	Good	>1M	None	multiple stems	1.2	6200510.34	331068.962
23	Bottlebrush	Callistemon sp	3	400	Good	>1M	None	multiple stems	1.2	6200507.82	331068.305
24	Pohutakawa	Metrosiderous excelsa	4	600	Good	>1M	None	multiple stems	0.8	6200503.84	331069.031
25	Peppermint	Agonis flexuosa	8	800	Poor	40K	None	decay at base, monitor health	0.4	6200514.96	331130.161
26	Peppermint	Agonis flexuosa	8	900	Fair	40K	None	previously topped, decay at base	0.8	6200505.23	331129.64
27	Peppermint	Agonis flexuosa	8	800	Fair	40K	None	decay at base	0.4	6200497.24	331132.101
28	Peppermint	Agonis flexuosa	10	1300	Poor	400	Remove Tree	recent failure 300mm limb, previously topped	1	6200492.03	331132.816
29	Peppermint	Agonis flexuosa	7	350	Poor	40K	None	monitor health	0.8	6200485.04	331137.074
30	Peppermint	Agonis flexuosa	3	200	Good	40K	None	None	0.7	6200484.97	331132.326
31	Peppermint	Agonis flexuosa	3	800	Poor	40K	Remove Tree	almost dead covered with ivy	0.8	6200493.63	331108.831
32	Peppermint	Agonis flexuosa	4	900	Dead	40K	Remove Tree	covered with ivy	0.9	6200492.16	331107.554
33	Peppermint	Agonis flexuosa	5	300	Good	500K	None	None	0.6	6200472.23	331097.943
34	Peppermint	Agonis flexuosa	4	300	Good	500K	None	None	0.9	6200468.4	331098.29
35	Peppermint	Agonis flexuosa	4	200	Good	500K	None	None	0.9	6200467.26	331099.125
36	Peppermint	Agonis flexuosa	9	1100	Fair	4K	Remove Tree	decay at base, consider remove tree now that adjacent replacement trees are established	1.6	6200465.37	331106.504
37	Peppermint	Agonis flexuosa	3	100	Good	>1M	None	None	0.7	6200471.3	331107.684
38	Peppermint	Agonis flexuosa	4	200	Good	500K	None	None	0.9	6200473.83	331106.858

Tree No	Common Name	Genus & species	Height (m)	DBH (mm)	Health	QTRA Risk Index	Recommended Works	Comments	Horz_Prec	X	Y
39	Peppermint	Agonis flexuosa	5	500	Fair	40K	clean ivy	covered with ivy	1.3	6200476.25	331113.106
40	Peppermint	Agonis flexuosa	6	1200	Fair	50K	None	split stem previously reduced	2.3	6200473.69	331120.29
41	Peppermint	Agonis flexuosa	6	300	Good	500K	None	None	0.9	6200473.06	331121.012
42	Peppermint	Agonis flexuosa	6	1000	Fair	4K	reduce stem closest road	decay at base	1.5	6200463.94	331116.952
43	Peppermint	Agonis flexuosa	8	1200	Good	4K	crown reduce	stump coppice	0.9	6200468.02	331131.478
44	Peppermint	Agonis flexuosa	8	300	Good	50K	Crown Clean	Minor decay in base, assymetrical crown due to group planting	0.7	6200540.17	331119.916
45	Peppermint	Agonis flexuosa	8	900	Fair	40K	Remove Tree	Previously topped, heavy lean , unsuitable form for the location	0.7	6200539.25	331117.127
46	Peppermint	Agonis flexuosa	7	450	Good	40K	weight reduce	leans over table, decay in base	0.8	6200539.77	331120.765
47	Peppermint	Agonis flexuosa	5	450	Poor	4K	Remove Tree	almost dead	0.8	6200530.19	331119.311
48	Peppermint	Agonis flexuosa	8	1000	Fair	50K	Remove Tree	significant decay in trunk, previously topped,	0.6	6200530.46	331117.691
49	Peppermint	Agonis flexuosa	9	1000	Fair	40K	Remove Tree	significant decay at base, previously topped	0.7	6200546.75	331113.141
50	Peppermint	Agonis flexuosa	6	1200	Fair	4K	Remove Tree	Recent trenching within 1m of base of tree, unknown root loss, previous failure at base	2.7	6200552.58	331085.75
51	Peppermint	Agonis flexuosa	12	1400	Fair	4K	Crown-clean, weight reduce and monitor for signs of movement due to root loss	Recent trenching within 2m of base of tree. Roots up to 100mm have been severed	1.3	6200549.87	331073.859
52	Peppermint	Agonis flexuosa	10	1100	Good	40K	weight reduce, crown clean and remove low limb to the northwest	Recent trenching within 3m of base of tree	0.8	6200549.08	331068.586
53	Peppermint	Agonis flexuosa	3	200	Good	>1M	None	None	1.8	6200534.13	331073.444
54	Peppermint	Agonis flexuosa	11	1500	Good	10K	Crown-clean, restructure regrowth and weight reduce	Previously topped	0.9	6200522.48	331078.641
55	Peppermint	Agonis flexuosa	11	1400	Good	10K	Crown-clean and weight reduce	Previously topped	1.1	6200518.47	331079.604
56	Peppermint	Agonis flexuosa	3	250	Good	>1M	None	None	0.8	6200529.75	331068.897
57	Peppermint	Agonis flexuosa	3	100	Good	>1M	None	None	1.1	6200512.4	331077.108
58	Peppermint	Agonis flexuosa	9	800	Good	50K	Crown Clean	Previously topped	0.7	6200512.72	331073.416
59	Peppermint	Agonis flexuosa	11	1400	Good	50K	Crown-clean and weight reduce	twin stemed, previously topped	1.7	6200519.62	331100.89
60	Peppermint	Agonis flexuosa	9	600	Dead	>1M	Remove stump	Tree has decayed at base and fallen into neighboring tree	1.3	6200432.33	331162.064
61	Peppermint	Agonis flexuosa	12	600	Fair	40K	Monitor health and structure	Significant decay at base	0.6	6200429.14	331167.541
62	Peppermint	Agonis flexuosa	8	600	Fair	4K	Remove Tree	Significant decay at base	2.3	6200418.05	331167.445
63	Peppermint	Agonis flexuosa	10	1600	Fair	4K	Crown Clean	Exclude camping within fall zone of tree	1.4	6200425.15	331169.909
64	Peppermint	Agonis flexuosa	10	1600	Fair	40K	Crown-clean and weight reduce	Exclude camping within fall zone of tree	1.1	6200420.24	331175.321
65	Peppermint	Agonis flexuosa	12	1600	Fair	40K	Crown Clean	Previously topped. Decay in base exclude camping within fall zone of tree	0.6	6200411.1	331166.468

Tree No	Common Name	Genus & species	Height (m)	DBH (mm)	Health	QTRA Risk Index	Recommended Works	Comments	Horz_Prec	X	Y
66	Peppermint	Agonis flexuosa	7	800	Fair	500K	Crown Clean	sparse canopy	0.9	6200407.38	331175.943
67	Peppermint	Agonis flexuosa	13	1800	Fair	50K	Monitor health and structure	significant decay in lower stems	0.8	6200417.39	331179.037
68	Peppermint	Agonis flexuosa	9	600	Fair	4K	Reduce end-weight	Exclude camping within fall zone of tree	1.6	6200406.52	331181.984
69	Peppermint	Agonis flexuosa	9	600	Fair	50K	Reduce end-weight	Previously topped	0.6	6200403.34	331180.473
70	Peppermint	Agonis flexuosa	9	1400	Fair	50K	Reduce end-weight and crown-clean	Multi stemmed tree. Exclude camping within fall zone of tree	0.8	6200404.19	331185.576
71	Peppermint	Agonis flexuosa	9	1400	Fair	4K	Reduce end-weight and crown-clean	Broken limb hanging in crown. Exclude camping within fall zone of tree	2.3	6200393.76	331198.315
72	Peppermint	Agonis flexuosa	9	800	Fair	50K	Reduce end-weight and crown-clean	Exclude camping within fall zone of tree	1	6200386.68	331203.4
73	Peppermint	Agonis flexuosa	8	1200	Fair	40K	Reduce end-weight and crown-clean	Exclude camping within fall zone of tree	1.6	6200387.37	331206.431
74	Peppermint	Agonis flexuosa	8	900	Fair	50K	Reduce end-weight	Significant decay at base. 1 stem previously removed at ground level	1	6200356.36	331245.484
75	Peppermint	Agonis flexuosa	8	900	Fair	50K	Crown Clean	None	0.4	6200355.59	331248.262
76	Paperbark	Melaleuca quinquenervia	4	150	Good	>1M	None	None	0.5	6200351.27	331241.605
77	Paperbark	Melaleuca quinquenervia	4	150	Good	>1M	None	None	0.5	6200348.47	331240.861
78	Peppermint	Agonis flexuosa	9	500	Good	4K	Reduce end-weight	Neighboring tree (#79) has root heaved and leans onto this tree	0.8	6200346.4	331239.924
79	Peppermint	Agonis flexuosa	9	1000	Good	4K	Remove stem leaning on neighbouring tree	None	0.9	6200342.02	331240.874
80	Peppermint	Agonis flexuosa	12	1200	Good	40K	Crown Clean	Tree leans and impedes vehicle access along road - may need to be removed	0.9	6200337.51	331247.061
81	Peppermint	Agonis flexuosa	8	500	Fair	50K	None	previously topped	1	6200462.26	331126.737
82	Peppermint	Agonis flexuosa	6	500	Fair	40K	None	decay at base	1.1	6200461.3	331126.454
83	Peppermint	Agonis flexuosa	9	1400	Fair	4K	Reduce end-weight	previously topped	0.6	6200458.92	331105.987
84	Peppermint	Agonis flexuosa	9	900	Good	50K	None	decay at base previously topped	0.5	6200444.92	331110.488
85	Peppermint	Agonis flexuosa	9	1100	Fair	4K	Remove Tree	extensive decay at base	3.1	6200452.77	331118.192
86	Peppermint	Agonis flexuosa	9	500	Good	50K	None	previously topped	0.7	6200449.02	331133.476
87	Peppermint	Agonis flexuosa	12	900	Good	50K	None	previously topped	0.7	6200446.46	331131.482
88	Peppermint	Agonis flexuosa	12	700	Fair	4K	Remove Tree	extensive decay at base and trunk	0.8	6200443.89	331124.495
89	Peppermint	Agonis flexuosa	8	700	Fair	40K	None	decay at base	1.1	6200437.1	331122.931
90	Peppermint	Agonis flexuosa	8	700	Fair	40K	None	previously topped	1.1	6200440.19	331128.466
91	Peppermint	Agonis flexuosa	9	1100	Fair	4K	Remove Tree	extensive decay at base	0.5	6200451.81	331142.052
92	Peppermint	Agonis flexuosa	9	1100	Fair	4K	Remove Tree	recent failure, extensive decay at base	0.7	6200440.77	331137.072
93	Peppermint	Agonis flexuosa	9	900	Fair	50K	None	previously topped	0.7	6200434.54	331131.221
94	Peppermint	Agonis flexuosa	5	500	Fair	50K	None	previously topped	1.5	6200428.16	331130.631
95	Peppermint	Agonis flexuosa	5	600	Good	500K	None	None	1.1	6200431.82	331136.777

Tree No	Common Name	Genus & species	Height (m)	DBH (mm)	Health	QTRA Risk Index	Recommended Works	Comments	Horz_Prec	X	Y
96	Peppermint	Agonis flexuosa	9	1700	Fair	50K	crown clean and weight reduce	previously topped	1.1	6200423.71	331136.678
97	Peppermint	Agonis flexuosa	6	1000	Good	500K	None	None	0.6	6200421.51	331143.454
98	Peppermint	Agonis flexuosa	6	600	Good	40K	None	previously topped, decay at base -	1.7	6200441.73	331145.647
99	Peppermint	Agonis flexuosa	14	700	Good	50K	None	previously topped	1	6200432.32	331151.906
100	Peppermint	Agonis flexuosa	4	200	Good	>1M	None	None	0.5	6200437.18	331143.167
101	Peppermint	Agonis flexuosa	7	1800	Fair	4K	remove tree or significant height reduce	previously topped extensive decay at base	1.4	6200427.65	331154.119
102	Peppermint	Agonis flexuosa	4	500	Good	500K	None	stump coppice	1.1	6200421.1	331157.126
103	Peppermint	Agonis flexuosa	10	600	Good	500K	None	None	0.9	6200403.54	331153.29
104	Peppermint	Agonis flexuosa	10	400	Good	500K	None	None	0.7	6200407.79	331152.865
105	Peppermint	Agonis flexuosa	10	800	Good	500K	None	None	1	6200400.85	331160.147
106	Ficus	Ficus sp	13	1500	Good	500K	None	None	0.8	6200394.36	331153.506
107	Peppermint	Agonis flexuosa	15	2500	Good	4K	weight reduce and brace	3 stems	0.7	6200386.75	331176.747
108	Peppermint	Agonis flexuosa	4	200	Good	>1M	None	None	0.3	6200385.23	331167.122
109	Paperbark	Melaleuca sp	12	1200	Good	500K	None	multiple stems, waterlogged soil	0.8	6200375.24	331173.753
110	Paperbark	Melaleuca sp	12	1000	Good	40K	None	previously topped	0.7	6200381.47	331165.167
111	Paperbark	Melaleuca sp	3	200	Good	>1M	None	None	1.7	6200381	331153.879
112	Peppermint	Agonis flexuosa	4	500	Good	>1M	None	None	0.6	6200374.92	331152.458
113	Paperbark	Melaleuca sp	3	200	Good	>1M	None	None	0.6	6200370.93	331155.465
114	Paperbark	Melaleuca sp	3	200	Good	>1M	None	None	0.8	6200367.4	331158.192
115	Paperbark	Melaleuca sp	10	300	Good	500K	None	None	0.7	6200366.77	331163.587
116	Paperbark	Melaleuca sp	4	200	Good	>1M	None	None	1.5	6200368.01	331166.513
117	Paperbark	Melaleuca sp	15	1100	Good	40K	Brace	None	1.4	6200363.02	331170.816
118	Paperbark	Melaleuca sp	15	900	Good	40K	Reduce end-weight	None	0.7	6200358.27	331169.303
119	Paperbark	Melaleuca sp	12	450	Good	500K	None	None	1.6	6200364.18	331159.969
120	Paperbark	Melaleuca sp	3	200	Good	>1M	None	None	0.5	6200362.53	331153.804
121	Paperbark	Melaleuca sp	3	300	Good	>1M	None	None	1.1	6200365.58	331148.325
122	Peppermint	Agonis flexuosa	10	1100	Good	500K	Reduce end-weight	over extended limb to sth east	0.8	6200355.82	331150.282
123	Paperbark	Melaleuca sp	9	300	Good	>1M	None	None	1.9	6200351.7	331158.914
124	Swamp Mahogany	Eucalyptus robusta	16	500	Good	50K	Dead Wood	None	2.2	6200343.83	331165.695
125	Paperbark	Melaleuca sp	3	200	Good	>1M	None	None	0.7	6200347.33	331167.92
126	Paperbark	Melaleuca sp	3	200	Good	>1M	None	None	0.9	6200341.71	331157.313
127	Peppermint	Agonis flexuosa	10	500	Good	500K	Crown Clean	rubbing limb	0.6	6200343.96	331154.543
128	Swamp Mahogany	Eucalyptus robusta	22	800	Good	500K	Crown Clean	brace previously installed	0.7	6200347.14	331143.566
129	Peppermint	Agonis flexuosa	15	800	Good	4K	Reduce end-weight	decay at base	0.6	6200361.14	331180.925
130	Paperbark	Melaleuca sp	8	700	Good	>1M	None	multiple stems	0.6	6200354.98	331186
131	Paperbark	Melaleuca sp	12	800	Good	100K	Reduce end-weight	None	0.7	6200350.14	331194.769
132	Peppermint	Agonis flexuosa	16	1000	Good	4K	Reduce end-weight	None	0.9	6200347.11	331206.044
133	Peppermint	Agonis flexuosa	12	400	Good	50K	Crown Clean	hollow branch	0.6	6200338.54	331214.207
134	Peppermint	Agonis flexuosa	17	400	Good	10K	Reduce end-weight	decay at lower trunk	0.6	6200343.59	331212.104
135	Peppermint	Agonis flexuosa	15	450	Good	500K	None	None	1.1	6200349.26	331213.163

Tree No	Common Name	Genus & species	Height (m)	DBH (mm)	Health	QTRA Risk Index	Recommended Works	Comments	Horz_Prec	X	Y
136	Peppermint	Agonis flexuosa	4	200	Good	>1M	None	None	0.5	6200332.89	331227.368
137	Peppermint	Agonis flexuosa	6	500	Good	>1M	None	m	1.4	6200327.99	331234.446
138	Peppermint	Agonis flexuosa	10	900	Good	4K	Reduce end-weight	heavy lean	1.3	6200329.87	331241.675
139	Peppermint	Agonis flexuosa	4	200	Good	>1M	None	None	0.9	6200332.92	331239.264
140	Peppermint	Agonis flexuosa	10	1200	Good	4K	Reduce end-weight	None	1	6200339.4	331234.145
141	Peppermint	Agonis flexuosa	4	200	Good	>1M	None	None	0.7	6200349.47	331229.561
142	Peppermint	Agonis flexuosa	4	300	Good	>1M	None	None	1.1	6200352.73	331232.592
143	Peppermint	Agonis flexuosa	13	1200	Good	400	Remove Tree	significant decay at base, 1 stem fallen into neighboring tree	1.2	6200358.2	331222.862
144	Peppermint	Agonis flexuosa	15	1800	Good	400	crown clean and weight reduce	previously topped	1.2	6200358.44	331220.93
145	Peppermint	Agonis flexuosa	11	1500	Good	40	Remove Tree	creeping failure of codominant stems	2.3	6200350.09	331222.289
146	Peppermint	Agonis flexuosa	4	200	Good	>1M	None	None	0.9	6200363.15	331212.885
147	Peppermint	Agonis flexuosa	9	900	Good	50K	remove decayed branch over road	None	0.6	6200368.67	331214.676
148	Paperbark	Melaleuca sp	9	1600	Good	4K	weight reduce and brace	multiple stems	0.6	6200361.44	331204.076
149	Peppermint	Agonis flexuosa	3	200	Good	>1M	None	None	0.5	6200372.29	331197.624
150	Peppermint	Agonis flexuosa	3	200	Good	>1M	None	None	0.7	6200376.15	331200.755
151	Paperbark	Melaleuca sp	17	900	Good	500K	Crown Clean	None	0.5	6200340.52	331178.894
152	Paperbark	Melaleuca sp	17	900	Good	4K	Reduce end-weight	decay at base, waterlogged soil	0.4	6200336.31	331171.183
153	Paperbark	Melaleuca sp	17	300	Good	4K	Reduce end-weight	None	0.6	6200333.26	331175.295
154	Paperbark	Melaleuca sp	17	900	Good	4K	weight reduce and brace	None	0.5	6200331.72	331177.653
155	Paperbark	Melaleuca sp	17	500	Fair	50K	None	recent failure 100mm limb	0.6	6200336.47	331179.439
156	Paperbark	Melaleuca sp	17	300	Good	4K	Reduce end-weight	decay at base, monitor lean	0.8	6200336.12	331181.886
157	Paperbark	Melaleuca sp	6	450	Good	50K	None	None	0.5	6200326.28	331173.793
158	Paperbark	Melaleuca sp	15	300	Good	50K	None	None	1	6200329.18	331183.543
159	Paperbark	Melaleuca sp	12	800	Good	50K	None	None	1.1	6200328.22	331184.055
160	Paperbark	Melaleuca sp	14	400	Good	50K	None	None	0.6	6200326.23	331183.925
161	Paperbark	Melaleuca sp	9	250	Fair	5K	Remove Tree	has heaved into neighboring tree	0.8	6200324.48	331181.018
162	Paperbark	Melaleuca sp	15	900	Good	10K	Reduce end-weight	None	0.5	6200322.72	331181.522
163	Paperbark	Melaleuca sp	14	350	Good	10K	Reduce end-weight	None	0.7	6200317.83	331182.758
164	Paperbark	Melaleuca sp	10	350	Good	40K	None	decay at base	0.7	6200314.55	331178.35
165	Paperbark	Melaleuca sp	12	900	Good	4K	Reduce end-weight	codominant stems creeping apart	1	6200313.21	331183.475
166	Paperbark	Melaleuca sp	9	500	Good	100K	Reduce end-weight	None	0.8	6200308.54	331189.584
167	Paperbark	Melaleuca sp	14	900	Good	4K	Reduce end-weight	None	0.4	6200310.95	331191.465
168	Peppermint	Agonis flexuosa	6	200	Good	500K	None	None	0.6	6200312.92	331191.969
169	Peppermint	Agonis flexuosa	6	500	Good	>1M	None	multiple stems	0.6	6200312.4	331198.016
170	Peppermint	Agonis flexuosa	6	500	Good	>1M	None	multiple stems	0.4	6200311.63	331198.19
171	Paperbark	Melaleuca sp	7	800	Good	4K	Reduce end-weight	None	0.6	6200316.41	331195.481
172	Paperbark	Melaleuca sp	9	500	Good	40K	None	previously codominant stem removed	0.4	6200323.16	331192.277
173	Paperbark	Melaleuca sp	12	1000	Good	40K	None	monitor lean	0.7	6200323.38	331198.623
174	Paperbark	Melaleuca sp	13	1300	Good	4K	Reduce end-weight	over road	0.9	6200333.93	331201.06

Tree No	Common Name	Genus & species	Height (m)	DBH (mm)	Health	QTRA Risk Index	Recommended Works	Comments	Horz_Prec	X	Y
175	Paperbark	Melaleuca sp	12	900	Good	4K	Reduce end-weight	over road	0.4	6200334.77	331194.206
176	Paperbark	Melaleuca sp	15	1100	Good	4K	Reduce end-weight	multiple stems	1	6200336.5	331189.709
177	Paperbark	Melaleuca sp	5	300	Good	100K	None	None	0.9	6200337.95	331186.3
178	Paperbark	Melaleuca sp	16	900	Good	10K	Reduce end-weight	None	0.6	6200332.46	331187.883
179	Paperbark	Melaleuca sp	3	200	Good	>1M	None	stump coppice	0.8	6200341.74	331186.79
180	Peppermint	Agonis flexuosa	8	450	Good	500K	None	None	1	6200326.3	331207.764
181	Peppermint	Agonis flexuosa	11	1300	Good	400	remove 2 largest stems	creeping failure	0.5	6200317.46	331209.719
182	Peppermint	Agonis flexuosa	10	1200	Good	4K	Reduce end-weight	None	1	6200324.6	331215.076
183	Peppermint	Agonis flexuosa	6	600	Good	50K	None	previously root heaved, stabilized	0.4	6200331.79	331218.099
184	Peppermint	Agonis flexuosa	8	600	Good	500K	None	None	1.1	6200327.79	331222.471
185	Mixed eucalypt species	Eucalypt sp	5	500	Fair	>1M	None	row of trees lopped to form hedge	1.2	6200307.63	331251.202
186	Paperbark	Melaleuca sp	11	700	Good	500K	None	None	1.1	6200281.62	331218.745
187	Paperbark	Melaleuca sp	8	1000	Good	4K	Reduce end-weight	None	0.4	6200282.57	331209.516
188	Paperbark	Melaleuca sp	8	700	Good	500K	None	None	0.6	6200279.82	331198.979
189	Paperbark	Melaleuca sp	10	1600	Good	40K	Reduce end-weight	multiple stems	0.6	6200288.8	331199.226
190	Paperbark	Melaleuca sp	10	1400	Good	500K	None	multiple stems	0.6	6200289.39	331187.984
191	Paperbark	Melaleuca sp	10	700	Good	4K	Reduce end-weight	None	0.4	6200285.29	331186.033
192	Paperbark	Melaleuca sp	5	1000	Good	500K	None	previously fallen and regrown from top	0.9	6200288.38	331180.504
193	Paperbark	Melaleuca sp	8	700	Good	4K	Reduce end-weight	None	0.8	6200292.6	331164.817
194	Paperbark	Melaleuca sp	12	500	Good	>1M	None	None	0.6	6200295.05	331160.332
195	Paperbark	Melaleuca sp	12	600	Good	40K	None	recent failure 250mm limb	0.4	6200301.46	331163.979
196	Paperbark	Melaleuca sp	12	1300	Good	4K	Reduce end-weight	multiple stems	0.6	6200310.95	331166.322
197	Paperbark	Melaleuca sp	12	600	Good	50K	Reduce end-weight	None	0.4	6200304.48	331159.15
198	Paperbark	Melaleuca sp	7	800	Good	4K	crown reduce	extensive decay at base,	0.6	6200318.29	331159.524
199	Paperbark	Melaleuca sp	12	800	Good	50K	Reduce end-weight	multiple stems, decay at base	0.5	6200309.86	331148.567
200	Paperbark	Melaleuca sp	12	900	Good	4K	Reduce end-weight	None	0.6	6200309.6	331149.201
201	Paperbark	Melaleuca sp	12	1300	Good	4K	crown reduce	extensive decay at base	1.3	6200326.46	331160.84
202	Paperbark	Melaleuca sp	15	1500	Good	50K	None	None	1.7	6200334.5	331161.148
203	Paperbark	Melaleuca sp	4	400	Good	>1M	None	None	0.7	6200325.23	331145.42
204	Paperbark	Melaleuca sp	3	200	Good	>1M	None	None	0.6	6200330.06	331141.16
205	Paperbark	Melaleuca sp	10	1900	Good	4K	Reduce end-weight	None	0.7	6200321.34	331136.509
206	Paperbark	Melaleuca sp	7	700	Good	400	Remove Tree	fallen into neighboring tree	1.2	6200318.34	331127.428
207	Paperbark	Melaleuca sp	9	1300	Good	10K	Reduce end-weight	None	2.9	6200315.17	331116.48
208	Paperbark	Melaleuca sp	4	600	Good	10K	Reduce end-weight	None	1.2	6200326.13	331116.623
209	Karri	Eucalyptus diversicolor	17	1000	Good	50K	None	None	1.5	6200326.96	331118.448
210	Paperbark	Melaleuca sp	4	200	Good	>1M	None	None	0.9	6200334.75	331125.429
211	Paperbark	Melaleuca sp	10	1600	Good	4K	Reduce end-weight	multiple stems	1.2	6200343.08	331106.407
212	Paperbark	Melaleuca sp	10	500	Good	10K	Reduce end-weight	None	1.2	6200338.61	331102.406
213	Peppermint	Agonis flexuosa	7	200	Good	>1M	None	None	0.8	6200334.74	331101.489
214	Paperbark	Melaleuca sp	9	800	Good	500K	None	None	1.4	6200339.43	331102.55
215	Paperbark	Melaleuca sp	9	400	Good	100K	None	None	1.1	6200338.74	331098.203

Tree No	Common Name	Genus & species	Height (m)	DBH (mm)	Health	QTRA Risk Index	Recommended Works	Comments	Horz_Prec	X	Y
216	Paperbark	Melaleuca sp	5	200	Good	>1M	None	None	1.4	6200343.3	331091.629
217	Paperbark	Melaleuca sp	8	1400	Good	100K	None	multiple stems	0.7	6200352.68	331096.878
218	Paperbark	Melaleuca sp	11	1200	Good	40K	None	None	2.7	6200343.36	331085.49
219	Paperbark	Melaleuca sp	3	400	Good	>1M	None	None	0.9	6200359.38	331115.276
220	Paperbark	Melaleuca sp	3	200	Good	>1M	None	None	0.7	6200360.93	331120.342
221	Peppermint	Agonis flexuosa	5	200	Good	>1M	None	None	0.6	6200359.95	331123.248
222	Peppermint	Agonis flexuosa	3	300	Good	>1M	None	None	0.7	6200367.04	331125.923
223	Peppermint	Agonis flexuosa	3	350	Good	>1M	None	multiple stems	0.9	6200366.12	331129.987
224	Peppermint	Agonis flexuosa	3	400	Good	>1M	None	multiple stems	0.7	6200362.54	331132.243
225	Peppermint	Agonis flexuosa	4	600	Good	>1M	None	multiple stems	0.6	6200372.62	331136.349
226	Peppermint	Agonis flexuosa	4	450	Good	>1M	None	m	0.6	6200376.22	331133.471
227	Peppermint	Agonis flexuosa	3	400	Good	>1M	None	multiple stems	2.2	6200391.87	331139.032
228	Peppermint	Agonis flexuosa	14	1200	Good	50K	None	previously topped	1.8	6200398.79	331133.874
229	Yates	Eucalyptus conferruminata	4	500	Good	>1M	None	None	2.2	6200399.03	331130.483
230	Peppermint	Agonis flexuosa	3	200	Good	>1M	None	None	0.7	6200390.25	331130.89
231	Yates	Eucalyptus conferruminata	6	500	Good	500K	None	None	0.6	6200380.74	331127.711
232	Peppermint	Agonis flexuosa	6	600	Good	500K	None	None	1.2	6200373.99	331115.446
233	Peppermint	Agonis flexuosa	4	700	Good	>1M	None	previously topped	0.7	6200373.6	331104.138
234	Peppermint	Agonis flexuosa	4	900	Good	>1M	None	previously topped	0.7	6200382.64	331083.561
235	Peppermint	Agonis flexuosa	3	300	Good	>1M	None	previously topped	1.4	6200378.26	331078.41
236	Peppermint	Agonis flexuosa	4	600	Good	>1M	None	previously topped	0.7	6200393.18	331077.425
237	Peppermint	Agonis flexuosa	4	900	Good	>1M	None	previously topped	1	6200402.19	331067.947
238	Peppermint	Agonis flexuosa	4	600	Good	>1M	None	previously topped	1.1	6200410.03	331059.579
239	Peppermint	Agonis flexuosa	5	700	Good	500K	None	previously topped	1.6	6200426.33	331044.842
240	Peppermint	Agonis flexuosa	5	900	Good	>1M	None	previously topped	1.8	6200441.45	331042.942
241	Peppermint	Agonis flexuosa	4	1000	Good	>1M	None	previously topped	0.8	6200447.38	331039.9
242	Peppermint	Agonis flexuosa	4	600	Good	>1M	None	previously topped	0.7	6200459.04	331042.294
243	Peppermint	Agonis flexuosa	3	400	Good	>1M	None	None	1.1	6200461.33	331030.94
244	Bottlebrush	Callistemon sp	3	200	Good	>1M	None	None	10.5	6200452.73	331025.781
245	Bottlebrush	Callistemon sp	3	200	Good	>1M	None	None	1.5	6200467.32	331036.731
246	Bottlebrush	Callistemon sp	3	200	Good	>1M	None	None	1	6200466.36	331039.155
247	Karri	Eucalyptus diversicolor	4	1200	Good	>1M	None	previously topped	1.4	6200467.17	331043.703
248	Peppermint	Agonis flexuosa	5	700	Good	40K	Reduce end-weight	None	2.7	6200472.04	331046.504
249	Peppermint	Agonis flexuosa	4	500	Good	>1M	None	None	0.9	6200473.45	331046.54
250	Paperbark	Melaleuca sp	12	900	Good	50K	None	None	0.6	6200477.91	331051.199
251	Paperbark	Melaleuca sp	8	900	Good	50K	None	None	0.8	6200464.08	331054.161
252	Peppermint	Agonis flexuosa	3	300	Good	>1M	None	None	1.2	6200477.84	331038.97
253	Peppermint	Agonis flexuosa	6	900	Good	>1M	None	multiple stems	0.8	6200471.55	331031.302
254	Peppermint	Agonis flexuosa	8	500	Good	>1M	None	None	1	6200478.44	331034.928
255	Peppermint	Agonis flexuosa	8	900	Good	>1M	None	multiple stems	0.7	6200468.91	331029.699
256	Peppermint	Agonis flexuosa	5	200	Good	>1M	None	None	2	6200474.57	331029.31
257	Peppermint	Agonis flexuosa	7	900	Good	>1M	None	multiple stems	1.2	6200477.78	331028.672
258	Peppermint	Agonis flexuosa	9	700	Good	>1M	None	multiple stems	0.8	6200473.92	331025.906

Tree No	Common Name	Genus & species	Height (m)	DBH (mm)	Health	QTRA Risk Index	Recommended Works	Comments	Horz_Prec	X	Y
259	Peppermint	Agonis flexuosa	5	500	Good	>1M	None	multiple stems	0.8	6200469.9	331024.76
260	Peppermint	Agonis flexuosa	8	900	Good	>1M	None	multiple stems	0.7	6200479	331021.097
261	Peppermint	Agonis flexuosa	4	500	Good	50K	None	previously topped	1.1	6200477.35	331019.747
262	Peppermint	Agonis flexuosa	5	500	Good	100K	None	heavy lean	1.5	6200477.06	331018.444
263	Peppermint	Agonis flexuosa	6	1000	Good	>1M	None	multiple stems	0.9	6200481.55	331017.812
264	Peppermint	Agonis flexuosa	8	1000	Good	500K	None	multiple stems	0.7	6200482.59	331021.288
265	Peppermint	Agonis flexuosa	8	600	Good	>1M	None	multiple stems	3.1	6200481.42	331022.083
266	Norfolk Island Pinee	Araucaria heterophylla	30	600	Good	500K	None	None	1	6200480.09	331029.039
267	Karri	Eucalyptus diversicolor	25	1000	Good	50K	None	None	0.8	6200474.04	331022.071
268	Peppermint	Agonis flexuosa	5	600	Good	>1M	None	multiple stems	1.2	6200479.53	331056.485
269	Peppermint	Agonis flexuosa	5	600	Good	>1M	None	multiple stems	0.6	6200479.22	331060.733
270	Peppermint	Agonis flexuosa	5	400	Good	>1M	None	m	0.6	6200479.62	331067.505
271	Peppermint	Agonis flexuosa	13	600	Good	>1M	None	None	1	6200468.45	331072.407
272	Peppermint	Agonis flexuosa	16	700	Good	500K	None	None	0.8	6200464.61	331069.431
273	Peppermint	Agonis flexuosa	9	500	Good	50K	None	None	0.7	6200464.11	331063.827
274	Peppermint	Agonis flexuosa	7	800	Good	50K	None	None	0.9	6200453.22	331072.886
275	Peppermint	Agonis flexuosa	3	500	Good	>1M	None	previously topped	0.8	6200458.2	331077.726
276	Karri	Eucalyptus diversicolor	9	1000	Good	500K	None	previously topped	0.8	6200461.43	331077.418
277	Peppermint	Agonis flexuosa	4	300	Good	>1M	None	None	0.9	6200451.9	331089.938
278	Peppermint	Agonis flexuosa	3	300	Good	>1M	None	previously topped	0.6	6200448.33	331085.745
279	Peppermint	Agonis flexuosa	3	400	Good	>1M	None	previously topped multiple stems	0.6	6200445.6	331085.64
280	Peppermint	Agonis flexuosa	3	400	Good	>1M	None	previously topped	0.6	6200445.83	331080.376
281	Peppermint	Agonis flexuosa	3	600	Good	>1M	None	multiple stems previously topped	1.1	6200445.57	331079.693
282	Peppermint	Agonis flexuosa	4	600	Good	>1M	None	previously topped	0.6	6200439.25	331088.19
283	Cape Lilac	Melia azedarach	4	500	Dead	4K	Remove Tree	None	0.9	6200437.24	331091.188
284	Peppermint	Agonis flexuosa	3	300	Good	>1M	None	previously topped	0.5	6200438.83	331093.628
285	Peppermint	Agonis flexuosa	3	500	Good	>1M	None	previously topped multiple stems	0.5	6200443.43	331094.575
286	Peppermint	Agonis flexuosa	5	1000	Fair	40K	None	maintain regrowth as trunk is decayed	1.2	6200442.48	331102.184
287	Bottlebrush	Callistemon sp	3	200	Good	>1M	None	None	0.6	6200433.6	331102.234
288	Paperbark	Melaleuca sp	3	300	Good	>1M	None	None	0.5	6200430.42	331101.68
289	Karri	Eucalyptus diversicolor	6	1000	Dead	4K	Remove Tree	covered with ivy	1.3	6200431.85	331098.503
290	Paperbark	Melaleuca sp	3	300	Good	>1M	None	None	0.5	6200428.54	331109.344
291	Paperbark	Melaleuca sp	9	700	Good	4K	Reduce end-weight	None	0.8	6200353.3	331088.777
292	Paperbark	Melaleuca sp	7	700	Good	4K	Reduce end-weight	None	0.5	6200353.23	331083.785
293	Paperbark	Melaleuca sp	8	1000	Good	40K	None	multiple stems	0.8	6200362.07	331072.115
294	Paperbark	Melaleuca sp	8	1000	Good	10K	Reduce end-weight	None	0.7	6200373.08	331069.707
295	Paperbark	Melaleuca sp	8	1400	Good	50K	None	likely to fall into creek	1.4	6200377.88	331061.019
296	Ironbark	Eucalyptus sideroxylon	5	600	Good	500K	None	previously topped	0.4	6200392.31	331057.652
297	Silver Dollar Gum	Eucalyptus cinerea	20	450	Good	500K	None	None	0.9	6200397.71	331041.753
298	Karri	Eucalyptus diversicolor	18	700	Good	500K	None	stump coppice	0.9	6200411.28	331034.951

Tree No	Common Name	Genus & species	Height (m)	DBH (mm)	Health	QTRA Risk Index	Recommended Works	Comments	Horz_Prec	X	Y
299	Karri	Eucalyptus diversicolor	22	1000	Fair	40K	None	None	1.7	6200413.51	331032.823
300	Yates	Eucalyptus conferruminata	8	700	Good	>1M	None	None	1.2	6200396.69	331122.826
301	Peppermint	Agonis flexuosa	4	400	Good	>1M	None	previously topped	1.2	6200399.23	331118.982
302	Peppermint	Agonis flexuosa	3	300	Good	>1M	None	None	0.6	6200390.71	331114.426
303	Peppermint	Agonis flexuosa	3	200	Good	>1M	None	None	0.4	6200392.26	331115.345
304	Peppermint	Agonis flexuosa	4	600	Good	>1M	None	previously topped	0.6	6200392.45	331111.715
305	Peppermint	Agonis flexuosa	3	400	Good	>1M	None	None	0.5	6200395.08	331107.905
306	Paperbark	Melaleuca sp	3	400	Good	>1M	None	None	0.5	6200397.78	331108.671
307	Peppermint	Agonis flexuosa	4	500	Good	>1M	None	None	0.6	6200400.86	331111.448
308	Peppermint	Agonis flexuosa	3	350	Good	>1M	None	previously topped	0.9	6200405.86	331109.545
309	Peppermint	Agonis flexuosa	3	150	Good	>1M	None	None	0.8	6200407.55	331110.133
310	Peppermint	Agonis flexuosa	4	600	Good	>1M	None	previously topped	1.1	6200411.95	331109.208
311	Peppermint	Agonis flexuosa	4	700	Good	>1M	None	previously topped	0.6	6200404.51	331105.786
312	Yates	Eucalyptus conferruminata	4	300	Good	>1M	None	None	0.4	6200385.12	331109.067
313	Peppermint	Agonis flexuosa	7	600	Good	>1M	None	None	0.6	6200386.67	331097.947
314	Yates	Eucalyptus conferruminata	5	300	Fair	>1M	None	previously topped	0.9	6200390.86	331094.752
315	Peppermint	Agonis flexuosa	8	500	Good	500K	None	None	1.5	6200394.79	331091.112
316	Peppermint	Agonis flexuosa	13	700	Good	>1M	None	None	0.6	6200394.71	331093.967
317	Peppermint	Agonis flexuosa	4	400	Good	>1M	None	touching service wire	0.4	6200406.64	331077.236
318	Peppermint	Agonis flexuosa	12	1000	Good	500K	Crown Clean	None	0.4	6200413.35	331067.83
319	Peppermint	Agonis flexuosa	12	900	Good	500K	Crown Clean	None	1.5	6200420.48	331072.315
320	Peppermint	Agonis flexuosa	4	600	Good	>1M	None	previously topped	0.5	6200435.49	331077.179
321	Peppermint	Agonis flexuosa	4	300	Good	>1M	None	None	0.9	6200426.19	331067.527
322	Peppermint	Agonis flexuosa	4	400	Good	>1M	None	multiple stems	0.4	6200427.58	331065.461
323	Peppermint	Agonis flexuosa	3	200	Good	>1M	None	multiple stems	0.5	6200426.48	331063.938
324	Peppermint	Agonis flexuosa	13	900	Good	10K	Reduce end-weight	None	1.1	6200425.08	331058.943
325	Peppermint	Agonis flexuosa	5	500	Good	>1M	None	multiple stems	0.6	6200437.09	331057.448
326	Peppermint	Agonis flexuosa	8	400	Good	500K	None	None	0.6	6200439.68	331067.128
327	Peppermint	Agonis flexuosa	4	900	Good	>1M	None	previously topped	1.5	6200443.73	331071.952
328	Peppermint	Agonis flexuosa	5	400	Good	500K	None	decay at base	0.5	6200454.04	331060.088
329	Peppermint	Agonis flexuosa	10	700	Good	500K	None	None	0.5	6200447.61	331054.469
330	Peppermint	Agonis flexuosa	15	1000	Good	500K	Reduce end-weight	None	1.4	6200459.2	331052.234
331	Bottlebrush	Callistemon sp	3	400	Good	>1M	None	multiple stems	0.5	6200445.67	331050.325
332	Flame Tree	Erythrina sp	20	400	Good	10K	remove stems leaning towards sites	cluster of trees	0.8	6200419.76	331030.146
333	Paperbark	Melaleuca sp	16	500	Fair	40K	None	None	1.5	6200428.72	331022.457
334	Flame Tree	Erythrina sp	12	500	Good	50K	remove leaning stem	None	1.1	6200425.7	331024.403
335	Willow	Salix sp	8	200	Good	50K	Reduce end-weight	None	1.1	6200431.44	331029.889
336	Flame Tree	Erythrina sp	16	300	Good	50K	remove leaning stems	cluster of stems	0.6	6200432.05	331022.456
337	Peppermint	Agonis flexuosa	16	400	Good	10K	Reduce end-weight	\	1.1	6200431.89	331022.312
338	Paperbark	Melaleuca sp	9	600	Good	500K	None	None	0.5	6200428.29	331023.072
339	Paperbark	Melaleuca sp	8	600	Good	500K	None	None	1	6200434.36	331017.193
340	Paperbark	Melaleuca sp	9	700	Good	500K	None	None	1	6200434.2	331013.642

Schedule of Trees - Turner Caravan Park

Date of Survey - August 2017



Tree No	Common Name	Genus & species	Height (m)	DBH (mm)	Health	QTRA Risk Index	Recommended Works	Comments	Horz_Prec	X	Y
341	Karri	Eucalyptus diversicolor	7	1100	Good	>1M	None	previously topped	1.4	6200439.18	331011.12
342	Karri	Eucalyptus diversicolor	7	1100	Good	>1M	None	previously topped	0.7	6200441.08	331011.246
343	Paperbark	Melaleuca sp	9	1400	Good	4K	Reduce end-weight	multiple stems, crack in leaning stem	1.1	6200274.76	331209.638
344	Paperbark	Melaleuca sp	6	300	Good	500K	None	None	1.1	6200247.14	331201.726
345	Peppermint	Agonis flexuosa	6	300	Good	>1M	None	None	0.7	6200240.38	331198.368
346	Peppermint	Agonis flexuosa	6	300	Good	>1M	None	None	0.8	6200237.8	331195.489
347	Peppermint	Agonis flexuosa	7	300	Good	>1M	None	None	1.9	6200239.31	331190.828
348	Peppermint	Agonis flexuosa	4	500	Good	>1M	None	multiple stems	0.9	6200230.25	331174.102
349	Peppermint	Agonis flexuosa	6	500	Good	>1M	None	multiple stems	0.5	6200241.63	331177.013
350	Japanese Pepper	Zanthoxylum piperitum	7	900	Good	>1M	None	None	0.7	6200248.04	331165.125
351	Marri	Corymbia calophylla	16	400	Good	500K	None	None	1.8	6200256.03	331171.688
352	Peppermint	Agonis flexuosa	4	200	Good	>1M	None	None	0.6	6200256.45	331174.616
353	Paperbark	Melaleuca sp	5	600	Good	>1M	None	None	1.1	6200262.38	331180.618
354	Paperbark	Melaleuca sp	16	1000	Good	4K	Reduce end-weight	heavy lean over campsite	1.4	6200268.83	331181.294
355	Paperbark	Melaleuca sp	14	1200	Good	4K	Reduce end-weight	waterlogged soil	1	6200286.51	331164.738
356	Paperbark	Melaleuca sp	10	350	Good	50K	Dead Wood	None	1.7	6200294.66	331154.442
357	Paperbark	Melaleuca sp	10	500	Good	500K	None	None	1.6	6200292.56	331151.835
358	Paperbark	Melaleuca sp	8	300	Good	500K	None	None	1.5	6200301.39	331142.591
359	Paperbark	Melaleuca sp	15	1100	Good	4K	Reduce end-weight	limb leaning over creek	0.5	6200305.4	331142.483
360	Paperbark	Melaleuca sp	15	500	Good	40K	None	None	0.5	6200309.15	331132.432
361	Paperbark	Melaleuca sp	15	800	Good	4K	Reduce end-weight	hangar	0.9	6200311.97	331131.303
362	Paperbark	Melaleuca sp	12	500	Good	50K	None	None	0.6	6200310.48	331126.403
363	Paperbark	Melaleuca sp	12	900	Good	50K	None	multiple stems	0.7	6200313.07	331123.762
364	Paperbark	Melaleuca sp	9	400	Good	50K	None	None	0.6	6200301.91	331116.986
365	Paperbark	Melaleuca sp	6	200	Good	>1M	None	None	1.9	6200298.64	331116.893
366	Peppermint	Agonis flexuosa	5	200	Good	>1M	None	None	0.6	6200280.57	331115.246
367	Karri	Eucalyptus diversicolor	22	900	Good	500K	Dead Wood	None	1.5	6200282.18	331111.464
368	Karri	Eucalyptus diversicolor	22	1300	Good	500K	Dead Wood	None	2.4	6200269.66	331109.2
369	Karri	Eucalyptus diversicolor	22	600	Good	>1M	None	None	0.7	6200275.31	331104.572
370	Karri	Eucalyptus diversicolor	22	500	Good	500K	None	None	1.8	6200265.01	331113.843
371	Karri	Eucalyptus diversicolor	22	350	Good	500K	None	None	0.6	6200269.27	331115.615
372	Karri	Eucalyptus diversicolor	22	350	Good	500K	Dead Wood	None	1.4	6200273.54	331116.866
373	Karri	Eucalyptus diversicolor	20	300	Good	500K	None	None	1	6200263.44	331123.053
374	Karri	Eucalyptus diversicolor	22	700	Good	500K	Dead Wood	None	1.1	6200267.66	331122.917
375	Marri	Corymbia calophylla	16	300	Good	500K	None	None	0.5	6200265.39	331119.859
376	Marri	Corymbia calophylla	16	300	Good	500K	None	None	1.2	6200265.35	331122.475
377	Peppermint	Agonis flexuosa	4	200	Good	>1M	None	None	1.1	6200271.13	331124.077
378	Marri	Corymbia calophylla	22	400	Good	500K	Dead Wood	None	0.6	6200274.24	331128.844
379	Karri	Eucalyptus diversicolor	20	800	Good	1K	Crown Clean	remove partially failed branch	0.7	6200279.71	331127.98
380	Paperbark	Melaleuca sp	13	1200	Good	4K	Reduce end-weight	hollow leaning stem	0.9	6200280.05	331134.845
381	Karri	Eucalyptus diversicolor	22	500	Good	500K	None	None	0.5	6200289.06	331131.984

Tree No	Common Name	Genus & species	Height (m)	DBH (mm)	Health	QTRA Risk Index	Recommended Works	Comments	Horz_Prec	X	Y
382	Paperbark	Melaleuca sp	16	1000	Good	500K	None	previous codominant stem removed	0.8	6200301.78	331130.516
383	Paperbark	Melaleuca sp	16	400	Good	4K	Reduce end-weight	decay at base	1.4	6200306.57	331134.067
384	Marri	Corymbia calophylla	20	550	Good	500K	Dead Wood	None	0.5	6200284.04	331149.99
385	Marri	Corymbia calophylla	12	300	Good	>1M	None	None	0.7	6200275.32	331145.073
386	Marri	Corymbia calophylla	12	200	Fair	500K	Dead Wood	None	0.6	6200275.6	331144.55
387	Marri	Corymbia calophylla	15	500	Good	40K	None	None	0.7	6200280.93	331150.957
388	Paperbark	Melaleuca sp	12	500	Good	40K	None	None	1.7	6200276.67	331165.852
389	Peppermint	Agonis flexuosa	10	400	Good	>1M	None	None	0.8	6200272.35	331163.621
390	Marri	Corymbia calophylla	20	800	Good	500K	None	None	0.7	6200267.81	331166.911
391	Marri	Corymbia calophylla	20	700	Good	500K	Dead Wood	None	1.8	6200264.86	331160.118
392	Marri	Corymbia calophylla	20	1100	Good	10K	Crown Clean	previously topped, cc, wr and aerial inspection	3.1	6200244.85	331167.233
393	Norfolk Island Pinee	Araucaria heterophylla	10	200	Good	>1M	None	None	1.3	6200257.2	331132.64
394	Norfolk Island Pinee	Araucaria heterophylla	8	200	Good	>1M	None	None	0.7	6200252.28	331132.375
395	Karri	Eucalyptus diversicolor	22	800	Good	500K	None	None	0.6	6200246.45	331126.839
396	Karri	Eucalyptus diversicolor	20	600	Good	500	Crown Clean	cc, wr, remove hangar, aerial inspection	1.4	6200249.97	331116.207
397	Karri	Eucalyptus diversicolor	25	1100	Good	500K	None	None	1.3	6200259.71	331122.455
398	Peppermint	Agonis flexuosa	3	200	Good	>1M	None	None	0.5	6200259.05	331126.065
399	Marri	Corymbia calophylla	6	1400	Poor	500K	remove live growth and poison	mostly dead stump	0.8	6200220.53	331137.17
400	Peppermint	Agonis flexuosa	9	700	Good	>1M	None	multiple stems	1.9	6200240.67	331117.909
401	Peppermint	Agonis flexuosa	16	1000	Good	>1M	None	multiple stems	1.3	6200243.32	331095.379
402	Peppermint	Agonis flexuosa	6	200	Good	>1M	None	None	1.2	6200258.18	331071.42
403	Marri	Corymbia calophylla	25	900	Good	400	Reduce end-weight and aerial inspection	aerial inspection	0.9	6200255.05	331069.039
404	Peppermint	Agonis flexuosa	6	250	Good	>1M	None	None	0.8	6200256.52	331067.346
405	Karri	Eucalyptus diversicolor	25	1000	Good	500K	Dead Wood	None	0.6	6200262.54	331059.924
406	Marri	Corymbia calophylla	20	400	Good	500K	None	None	2.9	6200262.93	331056.338
407	Marri	Corymbia calophylla	20	500	Good	500K	None	None	1.5	6200260.93	331053.922
408	Karri	Eucalyptus diversicolor	20	300	Good	100K	Reduce end-weight	leaning stem due to competition from adjacent tree	1.9	6200261.76	331052.638
409	Peppermint	Agonis flexuosa	7	400	Good	>1M	None	multiple stems	1.1	6200270.06	331049.45
410	Karri	Eucalyptus diversicolor	30	1100	Good	4K	Dead Wood	exclude camping beneath canopy, decay at base	0.5	6200274.4	331037.838
411	Marri	Corymbia calophylla	25	1100	Good	4K	Dead Wood	exclude camping beneath canopy, decay at base	1	6200277.16	331041.938
412	Karri	Eucalyptus diversicolor	22	500	Good	500K	None	None	1	6200291.72	331042.375
413	Karri	Eucalyptus diversicolor	17	300	Good	500K	None	None	1.3	6200289.22	331048.677
414	Peppermint	Agonis flexuosa	7	350	Good	500K	None	None	1.2	6200282.45	331050.721
415	Peppermint	Agonis flexuosa	9	200	Good	>1M	None	None	1.5	6200283.77	331054.588

Tree No	Common Name	Genus & species	Height (m)	DBH (mm)	Health	QTRA Risk Index	Recommended Works	Comments	Horz_Prec	X	Y
416	Karri	Eucalyptus diversicolor	25	600	Good	500K	None	None	1	6200278.03	331058.077
417	Paperbark	Melaleuca sp	8	300	Fair	4K	Remove Tree	fallen into neighboring tree	2.1	6200275.15	331061.782
418	Karri	Eucalyptus diversicolor	28	800	Good	500K	None	None	0.9	6200276.29	331064.312
419	Karri	Eucalyptus diversicolor	20	300	Good	>1M	None	None	0.6	6200286.36	331069.919
420	Paperbark	Melaleuca sp	16	600	Good	500K	None	None	0.6	6200274.49	331074.774
421	Karri	Eucalyptus diversicolor	16	300	Good	500K	None	None	0.9	6200276.25	331079.762
422	Karri	Eucalyptus diversicolor	25	900	Good	500K	None	None	0.9	6200274.49	331089.524
423	Karri	Eucalyptus diversicolor	22	400	Good	500K	None	None	0.5	6200275.03	331098.434
424	Peppermint	Agonis flexuosa	6	400	Fair	50K	None	None	0.7	6200214.47	331139.068
425	Marri	Corymbia calophylla	18	800	Good	500K	None	None	0.5	6200214.94	331135.965
426	Peppermint	Agonis flexuosa	10	300	Fair	5K	Dead Wood	dead stem	1.1	6200212.58	331130.401
427	Peppermint	Agonis flexuosa	8	200	Good	>1M	None	None	0.6	6200211.76	331127.686
428	Peppermint	Agonis flexuosa	9	350	Good	>1M	None	None	0.8	6200215.19	331118.648
429	Peppermint	Agonis flexuosa	14	600	Good	>1M	None	multiple stems	0.6	6200223.42	331107.724
430	Marri	Corymbia calophylla	28	1200	Good	4K	Brace and aerial inspection	aerial inspection, previously topped	0.9	6200230.48	331112.072
431	Marri	Corymbia calophylla	25	800	Good	500K	None	None	0.6	6200222.44	331124.449
432	Marri	Corymbia calophylla	25	500	Good	500K	None	None	0.6	6200222.95	331126.06
433	Marri	Corymbia calophylla	20	300	Good	50K	remove poorly attached low limb	None	0.9	6200229.66	331105.362
434	Peppermint	Agonis flexuosa	8	300	Good	>1M	None	None	0.7	6200233.69	331091.369
435	Peppermint	Agonis flexuosa	12	900	Good	500K	None	None	0.6	6200237.66	331087.803
436	Peppermint	Agonis flexuosa	12	800	Good	>1M	None	None	0.7	6200240.72	331081.22
437	Peppermint	Agonis flexuosa	12	800	Poor	4K	Remove Tree	decay at base	0.8	6200249.85	331062.51
438	Peppermint	Agonis flexuosa	12	500	Fair	>1M	None	None	1	6200256.45	331052.236
439	Karri	Eucalyptus diversicolor	25	500	Good	500K	None	None	0.5	6200263.18	331046.926
440	Karri	Eucalyptus diversicolor	16	350	Good	500K	None	None	0.8	6200269.07	331032.193
441	Peppermint	Agonis flexuosa	5	300	Good	>1M	None	None	0.9	6200267.77	331029.786
442	Marri	Corymbia calophylla	14	200	Good	500K	None	None	1.4	6200280.42	331027.006
443	Karri	Eucalyptus diversicolor	30	1400	Good	500K	None	None	0.6	6200270.44	331019.743
444	Marri	Corymbia calophylla	30	1000	Good	4K	Reduce end-weight	exclude camping beneath canopy, previous failure 500mm limb	0.6	6200279.79	331020.537
445	Marri	Corymbia calophylla	28	1300	Good	50K	Dead Wood	exclude camping beneath canopy	1.3	6200289.24	331012.47
446	Marri	Corymbia calophylla	25	1000	Good	50K	Dead Wood	None	0.9	6200291.91	331004.191
447	Peppermint	Agonis flexuosa	5	200	Good	>1M	None	None	0.7	6200291.47	331025.476
448	Peppermint	Agonis flexuosa	7	200	Good	>1M	None	None	1.6	6200309.94	331005.463
449	Marri	Corymbia calophylla	15	300	Good	500K	None	None	1.7	6200302.65	330999.97
450	Marri	Corymbia calophylla	16	350	Good	500K	None	None	0.9	6200290.16	330993.693
451	Karri	Eucalyptus diversicolor	21	1000	Good	500K	None	None	0.5	6200274.09	331001.704
452	Karri	Eucalyptus diversicolor	30	1000	Good	500K	None	None	0.6	6200272.35	331003.804
453	Karri	Eucalyptus diversicolor	30	1000	Good	500K	None	None	0.8	6200268.02	331008.886
454	Marri	Corymbia calophylla	15	500	Good	500K	None	twin stems	0.7	6200269.08	330999.635
455	Flooded Gum	Eucalyptus rudis	5	300	Fair	>1M	None	previously topped	0.4	6200264.14	331028.824

Tree No	Common Name	Genus & species	Height (m)	DBH (mm)	Health	QTRA Risk Index	Recommended Works	Comments	Horz_Prec	X	Y
456	Flooded Gum	Eucalyptus rudis	5	400	Fair	>1M	None	previously topped	0.5	6200261.05	331040.139
457	Flooded Gum	Eucalyptus rudis	5	400	Fair	>1M	None	previously topped	0.6	6200253.76	331048.851
458	Flooded Gum	Eucalyptus rudis	5	500	Fair	>1M	None	previously topped	0.4	6200252.01	331053.886
459	Flooded Gum	Eucalyptus rudis	5	500	Fair	>1M	None	previously topped	1	6200243.59	331063.658
460	Flooded Gum	Eucalyptus rudis	5	600	Fair	>1M	None	previously topped	0.6	6200237.9	331070.78
461	Flooded Gum	Eucalyptus rudis	5	600	Fair	>1M	None	previously topped	0.6	6200233.41	331081.321
462	Flooded Gum	Eucalyptus rudis	5	600	Fair	>1M	None	previously topped	0.6	6200230.26	331088.408
463	Flooded Gum	Eucalyptus rudis	5	500	Fair	>1M	None	previously topped	0.9	6200224.22	331096.992
464	Flooded Gum	Eucalyptus rudis	5	500	Fair	>1M	None	previously topped	0.9	6200218.46	331107.321
465	Peppermint	Agonis flexuosa	5	300	Good	>1M	None	multiple stems	0.6	6200204.86	331115.057
466	Flooded Gum	Eucalyptus rudis	5	500	Good	>1M	None	previously topped	1.1	6200251.31	331022.242
467	Flooded Gum	Eucalyptus rudis	5	500	Good	>1M	None	previously topped	1.4	6200247.46	331032.139
468	Flooded Gum	Eucalyptus rudis	5	500	Good	>1M	None	previously topped	1.4	6200246.21	331043.118
469	Flooded Gum	Eucalyptus rudis	5	500	Good	>1M	None	previously topped, decay at base	6.2	6200236.88	331045.46
470	Flooded Gum	Eucalyptus rudis	5	600	Good	>1M	None	previously topped	0.6	6200225.24	331063.573
471	Flooded Gum	Eucalyptus rudis	5	500	Good	>1M	None	previously topped	0.8	6200219.07	331073.184
472	Flooded Gum	Eucalyptus rudis	5	600	Good	>1M	None	previously topped	1.4	6200216.13	331082.56
473	Flooded Gum	Eucalyptus rudis	5	600	Good	>1M	None	previously topped	0.6	6200210.41	331088.892
474	Paperbark	Melaleuca sp	6	700	Good	500K	None	multiple stems, previously topped	1	6200208.22	331095.186
475	Paperbark	Melaleuca sp	8	300	Good	500K	None	previously topped	0.7	6200213.29	331087.812
476	Paperbark	Melaleuca sp	8	1000	Good	500K	None	multiple stems, previously topped	1.4	6200219.63	331078.797
477	Paperbark	Melaleuca sp	8	600	Good	500K	None	previously topped	0.6	6200224.37	331070.478
478	Paperbark	Melaleuca sp	8	600	Good	500K	None	previously topped	1.2	6200231.12	331062.384
479	Paperbark	Melaleuca sp	8	500	Good	500K	None	previously topped	2.2	6200234.49	331053.548
480	Paperbark	Melaleuca sp	8	300	Good	500K	None	multiple stems	1.2	6200243.04	331046.052
481	Paperbark	Melaleuca sp	10	600	Good	500K	None	previously topped	1	6200242.66	331036.876
482	Paperbark	Melaleuca sp	8	400	Good	500K	None	previously topped	1.2	6200246.45	331025.38
483	Peppermint	Agonis flexuosa	10	1100	Good	50K	None	None	1.4	6200234.1	331039.757
484	Unidentified	unidentified	3	900	Good	>1M	None	multiple stems	1.6	6200218.82	331067.728
485	Peppermint	Agonis flexuosa	5	200	Good	>1M	None	None	0.6	6200275.56	331233.314
486	Peppermint	Agonis flexuosa	8	600	Good	>1M	None	None	0.6	6200272.01	331231.927
487	Peppermint	Agonis flexuosa	5	200	Good	>1M	None	None	0.6	6200266.89	331229.262
488	Peppermint	Agonis flexuosa	9	500	Good	500K	Reduce end-weight	None	0.9	6200263.35	331247.026
489	Ficus	Ficus sp	9	500	Good	>1M	None	grove of approx 30 stems	1.6	6200262.36	331246.362
490	Paperbark	Melaleuca sp	7	400	Good	>1M	None	None	0.7	6200243.49	331220.689
491	Peppermint	Agonis flexuosa	6	300	Good	>1M	None	None	1	6200239.76	331214.245
492	Paperbark	Melaleuca sp	6	300	Good	500K	None	None	1.1	6200239.8	331209.32
493	Paperbark	Melaleuca sp	6	300	Good	500K	None	None	1.2	6200238.43	331209.552
494	Paperbark	Melaleuca sp	5	300	Good	>1M	None	None	0.8	6200239.4	331203.477
495	Karri	Eucalyptus diversicolor	15	300	Good	500K	None	None	0.9	6200233.04	331195.327
496	Karri	Eucalyptus diversicolor	16	400	Good	500K	None	None	1.1	6200226.27	331193.087
497	Karri	Eucalyptus diversicolor	16	400	Good	500K	None	None	1.3	6200223.77	331181.663
498	Marri	Corymbia calophylla	16	350	Good	500K	None	None	1.9	6200199.01	331130.175

Tree No	Common Name	Genus & species	Height (m)	DBH (mm)	Health	QTRA Risk Index	Recommended Works	Comments	Horz_Prec	X	Y
499	Karri	Eucalyptus diversicolor	25	600	Good	500K	None	None	1.6	6200199.31	331131.377
500	Karri	Eucalyptus diversicolor	22	500	Good	500K	None	None	3.6	6200184.28	331104.62
501	Karri	Eucalyptus diversicolor	23	450	Good	500K	None	None	1.4	6200185.05	331105.123
502	Karri	Eucalyptus diversicolor	23	450	Good	500K	None	None	0.8	6200179.38	331092.31
503	Karri	Eucalyptus diversicolor	28	900	Good	40K	Brace	codominant stems with included bark	1.2	6200180.67	331089.797
504	Karri	Eucalyptus diversicolor	24	500	Good	500K	None	None	1.3	6200171.19	331077.833
505	Karri	Eucalyptus diversicolor	30	800	Good	100K	None	None	1.5	6200172.4	331073.299
506	Karri	Eucalyptus diversicolor	20	400	Fair	>1M	None	None	0.7	6200178.49	331062.868
507	Karri	Eucalyptus diversicolor	16	200	Fair	>1M	None	None	1.3	6200178.69	331054.799
508	Karri	Eucalyptus diversicolor	20	300	Good	>1M	None	None	2.3	6200179.47	331056.347
509	Marri	Corymbia calophylla	16	250	Good	>1M	None	None	1.1	6200181.91	331053.344
510	Marri	Corymbia calophylla	20	300	Good	>1M	None	None	1.7	6200187.29	331056.405
511	Marri	Corymbia calophylla	22	500	Good	50K	side trim	decay in upper stem	1.6	6200185.82	331050.722
512	Karri	Eucalyptus diversicolor	28	500	Good	500K	None	None	0.9	6200189.47	331048.921
513	Karri	Eucalyptus diversicolor	30	800	Good	500K	None	None	1.1	6200192.27	331045.678
514	Karri	Eucalyptus diversicolor	28	600	Good	40K	inspect further	decay at base	1.9	6200198.85	331035.03
515	Karri	Eucalyptus diversicolor	30	900	Good	40K	None	None	1.3	6200205.74	331031.003
516	Karri	Eucalyptus diversicolor	30	600	Good	500K	None	None	2.2	6200213.12	331021.324
517	Karri	Eucalyptus diversicolor	27	450	Good	>1M	None	None	1	6200213.63	331010.311
518	Karri	Eucalyptus diversicolor	27	450	Good	>1M	None	None	2.4	6200218.48	331013.86
519	Karri	Eucalyptus diversicolor	27	350	Good	>1M	None	None	2.1	6200198.62	331003.648
520	Marri	Corymbia calophylla	16	200	Good	>1M	None	None	1.1	6200224.11	331003.88
521	Karri	Eucalyptus diversicolor	25	200	Good	>1M	None	None	0.7	6200229.14	330997.539
522	Karri	Eucalyptus diversicolor	28	350	Good	>1M	None	None	2.5	6200229.54	330998.129
523	Karri	Eucalyptus diversicolor	19	200	Good	>1M	None	None	3.7	6200231.68	330994.12
524	Karri	Eucalyptus diversicolor	26	400	Good	>1M	None	None	2.6	6200242.79	330996.562
525	Marri	Corymbia calophylla	14	250	Good	>1M	None	None	1.5	6200239.63	330988.98
526	Marri	Corymbia calophylla	16	200	Fair	>1M	None	None	0.8	6200242.5	330982.373
527	Marri	Corymbia calophylla	16	300	Good	>1M	None	None	2.3	6200249.25	330984.742
528	Karri	Eucalyptus diversicolor	20	500	Good	40K	remove low side limb with decay	None	2.5	6200248.58	330980.973
529	Karri	Eucalyptus diversicolor	19	600	Good	500K	None	None	2.6	6200251.86	330974.79
530	Karri	Eucalyptus diversicolor	22	1100	Fair	500K	None	extensive decay at base but leaning towards bush	2.4	6200264.2	330982.981
531	Flooded Gum	Eucalyptus rudis	5	400	Fair	>1M	None	previously topped	0.9	6200236.24	330994.472
532	Flooded Gum	Eucalyptus rudis	5	250	Fair	>1M	None	previously topped	1.4	6200238.29	331007.828
533	Flooded Gum	Eucalyptus rudis	5	400	Fair	>1M	None	previously topped	0.8	6200224.64	331010.17
534	Flooded Gum	Eucalyptus rudis	5	400	Fair	>1M	None	previously topped	1.7	6200225.65	331022.179
535	Flooded Gum	Eucalyptus rudis	5	400	Fair	>1M	None	previously topped	1.2	6200215.54	331027.81
536	Flooded Gum	Eucalyptus rudis	5	600	Fair	>1M	None	previously topped	1.5	6200208.11	331036.376
537	Flooded Gum	Eucalyptus rudis	5	500	Fair	>1M	None	previously topped	4.9	6200203.14	331044.348
538	Flooded Gum	Eucalyptus rudis	5	400	Fair	>1M	None	previously topped	0.8	6200194.73	331053.368
539	Flooded Gum	Eucalyptus rudis	5	500	Fair	>1M	None	previously topped	0.8	6200193.59	331058.84

Tree No	Common Name	Genus & species	Height (m)	DBH (mm)	Health	QTRA Risk Index	Recommended Works	Comments	Horz_Prec	X	Y
540	Flooded Gum	Eucalyptus rudis	5	400	Fair	>1M	None	previously topped	0.9	6200182.21	331067.038
541	Flooded Gum	Eucalyptus rudis	5	500	Fair	>1M	None	previously topped	1.5	6200183.38	331073.946
542	Peppermint	Agonis flexuosa	6	300	Good	>1M	None	None	1.3	6200189.12	331065.553
543	Paperbark	Melaleuca sp	6	400	Good	>1M	None	previously topped	1.2	6200189.98	331057.462
544	Paperbark	Melaleuca sp	6	400	Good	>1M	None	previously topped	0.7	6200198.8	331050.386
545	Paperbark	Melaleuca sp	6	300	Good	>1M	None	previously topped	1.9	6200206.63	331041.891
546	Paperbark	Melaleuca sp	6	300	Good	>1M	None	previously topped	1.9	6200222.26	331028.867
547	Paperbark	Melaleuca sp	6	400	Good	>1M	None	previously topped	2	6200224.82	331019.66
548	Paperbark	Melaleuca sp	6	250	Good	>1M	None	previously topped decay at base	1.9	6200229.48	331010.317
549	Paperbark	Melaleuca sp	4	200	Fair	>1M	None	None	2.6	6200239.65	330991.351
550	Karri	Eucalyptus diversicolor	18	450	Good	500K	None	previously topped	3.1	6200257.12	330997.887
551	Marri	Corymbia calophylla	18	600	Good	>1M	remove ivy	None	1.4	6200252.42	330999.418
552	Karri	Eucalyptus diversicolor	9	350	Dead	1K	Remove Tree	None	2.7	6200253.32	331003.699
553	Karri	Eucalyptus diversicolor	16	600	Fair	>1M	remove ivy	None	0.8	6200247.99	331007.247
554	Marri	Corymbia calophylla	19	600	Good	>1M	remove ivy	None	5.3	6200241.11	331005.905
555	Karri	Eucalyptus diversicolor	24	800	Good	500K	None	previously topped	2.9	6200232.21	331003.067
556	Karri	Eucalyptus diversicolor	26	800	Good	500K	remove ivy	previously topped	3.3	6200233.64	331013.6
557	Karri	Eucalyptus diversicolor	28	1100	Good	50K	remove ivy and aerial inspection	previously topped	3	6200238.86	331022.71
558	Marri	Corymbia calophylla	16	400	Poor	50K	remove ivy and aerial inspection	None	1.9	6200232.67	331023.745
559	Marri	Corymbia calophylla	19	1000	Good	50K	reduce height	previously topped	3.6	6200193.57	331069.335
560	Karri	Eucalyptus diversicolor	22	1000	Good	10K	reduce height	previously topped	1.6	6200197.7	331078.304
561	Karri	Eucalyptus diversicolor	30	1000	Good	500K	None	None	0.6	6200289.99	330985.141
562	Karri	Eucalyptus diversicolor	20	350	Good	500K	None	None	1.4	6200301.27	330982.521
563	Black Butt	Eucalyptus patens	20	350	Good	40K	Reduce end-weight	heavy lean over road	1	6200312.19	330979.94
564	Karri	Eucalyptus diversicolor	20	200	Good	>1M	None	poor specimen	1.5	6200315.57	330976.637
565	Marri	Corymbia calophylla	16	200	Good	500K	None	None	0.8	6200331.22	330974.809
566	Marri	Corymbia calophylla	16	200	Good	500K	None	None	0.8	6200357.46	330972.207
567	Black Butt	Eucalyptus patens	28	1100	Poor	4K	remove crown to safe height	None	1.2	6200361.4	330966.878
568	Black Butt	Eucalyptus patens	18	350	Good	10K	Reduce end-weight	previous failure 300mm limb	0.6	6200408.15	330960.667
569	Marri	Corymbia calophylla	18	300	Good	>1M	None	None	0.7	6200411.22	330959.236
570	Black Butt	Eucalyptus patens	20	450	Good	100K	None	None	0.9	6200421.07	330961.826
571	Marri	Corymbia calophylla	18	500	Good	>1M	None	None	0.8	6200456.38	330953.377
572	Peppermint	Agonis flexuosa	8	1500	Good	500K	None	multiple stems	0.8	6200467.31	330947.294
573	Marri	Corymbia calophylla	20	450	Good	500K	None	None	1.3	6200443.45	330964.183
574	Marri	Corymbia calophylla	20	1200	Fair	500K	None	None	1.8	6200431.49	330962.632
575	Marri	Corymbia calophylla	20	350	Fair	>1M	None	previous failure 300mm limb	1	6200410.22	330968.416
576	Marri	Corymbia calophylla	20	350	Good	>1M	None	None	1.4	6200395.82	330972.335
577	Karri	Eucalyptus diversicolor	15	200	Good	>1M	None	None	2.9	6200388.57	330971.058
578	Marri	Corymbia calophylla	26	900	Poor	4K	remove limbs over road	None	0.7	6200387.16	330974.282
579	Marri	Corymbia calophylla	18	450	Dead	4K	Remove Tree	None	1.3	6200380.24	330979.045
580	Marri	Corymbia calophylla	11	200	Good	>1M	None	None	0.5	6200381.68	330976.444
581	Black Butt	Eucalyptus patens	30	1200	Dead	4K	remove limbs over road	None	1.1	6200377.43	330978.533
582	Marri	Corymbia calophylla	20	600	Good	>1M	None	None	1.7	6200368.54	330978.193

Schedule of Trees - Turner Caravan Park

Date of Survey - August 2017



Tree No	Common Name	Genus & species	Height (m)	DBH (mm)	Health	QTRA Risk Index	Recommended Works	Comments	Horz_Prec	X	Y
583	Peppermint	Agonis flexuosa	7	300	Good	>1M	None	None	0.8	6200357.36	330979.023
584	Peppermint	Agonis flexuosa	9	200	Good	>1M	None	None	1.1	6200348.26	330982.389
585	Black Butt	Eucalyptus patens	30	1200	Fair	4K	remove limbs over road	significant defects but leaning towards bush	1.7	6200342.57	330991.934
586	Flooded Gum	Eucalyptus rudis	15	200	Good	>1M	None	None	3.1	6200347.01	330999.389
587	Marri	Corymbia calophylla	8	300	Good	>1M	None	None	1.7	6200371.01	331003.175
588	Paperbark	Melaleuca sp	4	400	Good	>1M	None	None	0.7	6200391.44	331029.196
589	Paperbark	Melaleuca sp	4	400	Good	>1M	None	None	0.6	6200388.39	331029.17
590	Yates	Eucalyptus conferruminata	12	500	Good	>1M	None	None	0.4	6200389.53	331044.938
591	Yates	Eucalyptus conferruminata	12	500	Good	>1M	None	None	0.6	6200370.02	331049.651
592	Peppermint	Agonis flexuosa	4	600	Good	>1M	None	multiple stems	0.5	6200362.63	331052.653
593	Peppermint	Agonis flexuosa	4	600	Good	>1M	None	multiple stems	0.7	6200355.86	331055.219
594	Karri	Eucalyptus diversicolor	18	700	Good	500K	None	None	1.2	6200333.07	331052.633
595	Karri	Eucalyptus diversicolor	18	600	Good	500K	None	None	0.5	6200336.98	331040.959
596	Karri	Eucalyptus diversicolor	28	600	Good	500K	None	None	1.2	6200320.7	331037.877
597	Karri	Eucalyptus diversicolor	28	600	Good	500K	None	None	2	6200320.68	331028.753
598	Marri	Corymbia calophylla	28	1200	Good	100K	None	None	1.7	6200319.65	331020.259
599	Black Butt	Eucalyptus patens	25	650	Fair	40K	Reduce end-weight	limbs over road	1.1	6200326.21	330989.653
600	Black Butt	Eucalyptus patens	25	500	Good	500K	None	None	2.8	6200329.17	330984.697
601	Marri	Corymbia calophylla	15	200	Good	>1M	None	None	0.4	6200325.12	330986.611
602	Black Butt	Eucalyptus patens	18	600	Good	500K	None	None	1	6200319.96	330982.05
603	Karri	Eucalyptus diversicolor	26	500	Good	>1M	None	None	0.8	6200316.67	330988.02
604	Black Butt	Eucalyptus patens	26	1800	Fair	400	shorten stem towards road	fractured lower trunk	1.1	6200324.89	330994.079
605	Karri	Eucalyptus diversicolor	26	600	Good	>1M	None	None	0.6	6200298.27	330988.568
606	Karri	Eucalyptus diversicolor	22	300	Good	>1M	None	None	1.4	6200292.2	330987.591
607	Karri	Eucalyptus diversicolor	22	200	Good	>1M	None	None	0.6	6200290.42	330992.195
608	Karri	Eucalyptus diversicolor	22	200	Good	>1M	None	None	1.2	6200284.53	330994.084
609	Marri	Corymbia calophylla	18	200	Good	>1M	None	None	1.6	6200272.42	330991.753
610	Karri	Eucalyptus diversicolor	20	300	Good	>1M	None	None	0.9	6200455.34	330967.302
611	Karri	Eucalyptus diversicolor	20	500	Good	500K	None	None	0.6	6200465.5	330972.462
612	Karri	Eucalyptus diversicolor	20	450	Good	50K	None	cambium damage to branch	1.1	6200467.8	330971.019
613	Karri	Eucalyptus diversicolor	20	500	Good	500K	None	None	1	6200462.24	330975.157
614	Marri	Corymbia calophylla	16	600	Good	50K	reduce height	previously topped	0.9	6200467.88	330976.122
615	Yates	Eucalyptus conferruminata	6	500	Good	>1M	None	None	1	6200474.8	330980.122
616	Yates	Eucalyptus conferruminata	15	500	Good	500K	None	None	1	6200475.63	330985.664
617	Yates	Eucalyptus conferruminata	4	300	Good	>1M	None	previously topped	0.6	6200475.01	330988.254
618	Karri	Eucalyptus diversicolor	20	700	Good	500K	None	None	0.4	6200457.63	330980.633
619	Karri	Eucalyptus diversicolor	20	400	Good	500K	None	None	1.1	6200457.74	330980.681
620	Karri	Eucalyptus diversicolor	20	400	Good	500K	None	None	1.3	6200459.12	330983.335
621	Karri	Eucalyptus diversicolor	20	400	Good	100K	shorten low lateral limb	None	2	6200458.85	330975.31
622	Karri	Eucalyptus diversicolor	12	200	Good	>1M	None	None	0.6	6200457.13	330973.55
623	Karri	Eucalyptus diversicolor	20	300	Good	>1M	None	None	1.1	6200454.37	330975.292
624	Karri	Eucalyptus diversicolor	9	300	Good	500K	None	None	1.1	6200455.31	330979.023

Tree No	Common Name	Genus & species	Height (m)	DBH (mm)	Health	QTRA Risk Index	Recommended Works	Comments	Horz_Prec	X	Y
625	Karri	Eucalyptus diversicolor	5	200	Good	>1M	None	None	0.4	6200457.24	330977.336
626	Karri	Eucalyptus diversicolor	23	500	Good	500K	None	None	1.3	6200446.41	330973.052
627	Karri	Eucalyptus diversicolor	23	350	Good	>1M	None	None	1	6200449.77	330971.538
628	Swamp Mahogany	Eucalyptus robusta	16	350	Good	>1M	None	None	0.6	6200441.1	330982.663
629	Karri	Eucalyptus diversicolor	20	350	Good	>1M	None	None	0.6	6200435.65	330991.785
630	Peppermint	Agonis flexuosa	5	500	Good	>1M	None	None	0.5	6200440.1	330994.303
631	Karri	Eucalyptus diversicolor	22	600	Good	4K	reduce height	previously topped	0.6	6200446.51	330996.699
632	Paperbark	Melaleuca sp	6	1500	Good	50K	None	multiple stems	0.5	6200445.66	330997.45
633	Karri	Eucalyptus diversicolor	28	900	Good	500K	None	None	4.3	6200444.34	330998.694
634	Paperbark	Melaleuca sp	5	600	Good	500K	None	None	0.9	6200440.03	331006.232
635	Flooded Gum	Eucalyptus rudis	4	1100	Fair	>1M	None	previously topped	0.5	6200457.38	331025.486
636	Karri	Eucalyptus diversicolor	5	1000	Fair	>1M	None	previously topped	0.7	6200490.84	330993.542
637	Liquidambar	Liquidambar styraciflua	8	300	Good	>1M	None	None	0.9	6200495.71	330987.076
638	Marri	Corymbia calophylla	15	900	Good	500K	None	None	0.5	6200506.53	330941.302
639	Pittosporum	Pittosporum sp	9	900	Good	>1M	None	multiple stems	1.4	6200514.46	330942.421
640	Pencil Pine	Cupressus sempervirens	5	300	Good	>1M	None	None	0.6	6200491.07	330948.816
641	Pencil Pine	Cupressus sempervirens	5	300	Good	>1M	None	None	1.2	6200486.9	330951.081
642	Pencil Pine	Cupressus sempervirens	5	300	Good	>1M	None	None	1	6200488.58	330955.263
643	Pencil Pine	Cupressus sempervirens	5	300	Good	>1M	None	None	0.6	6200487.64	330958.153
644	Pencil Pine	Cupressus sempervirens	5	300	Good	>1M	None	None	1	6200488.07	330961.435



APPENDIX B

Visual Tree Assessment [VTA]

The assessing arborist uses his skill, experience and knowledge to locate any visual abnormalities upon or surrounding the subject trees. VTA interprets the body language of trees, linking internal defects to the tree's own repair-structures, confirming and measuring these defects, and finally assessing them with failure criteria, and from this, deducing measures for the 'therapy' of the tree. Accordingly trees that are only apparently dangerous should be distinguished from those that are really dangerous, thus avoiding unnecessary fellings and accidents caused by tree failure.

VTA comprises the assessment of predictable symptoms associated with tree failures and / or tree disorders that culminate to form visual tree condition. This process is accepted by professional arborists as being a first measure in the assessment and management of urban trees.

The assessment is conducted visually from ground level or under binocular view. In order to achieve clear viewing the assessor may initiate clearance of vines or plant clutter from around tree base, upon tree main stems, within main branch unions or other key locations prior to conducting the assessment itself. Hand tools and data recording equipment are commonly employed during VTA.

In the event the VTA process is deemed by as being insufficient in determination of a trees condition then further measures of an exploratory or investigative nature may be recommended. Employment of specialist tools, sophisticated measuring instruments and laboratory-based analysis are a few of the investigative activities that may be adopted by the assessor as additional diagnostic tools in support of VTA.



APPENDIX C

Quantified Tree Risk Assessment

Tree safety management is a matter of limiting the risk of significant harm from tree failure whilst maintaining the benefits conferred by trees. Although it may seem counter intuitive, the condition of trees should not be the first consideration. Instead, tree managers should consider first the usage of the land on which the trees stand, which in turn will inform the process of assessing the trees.

The Quantified Tree Risk Assessment (QTRA) system applies established and accepted risk management principles to tree safety management. Firstly, the targets (people, property and vehicles) upon which trees could fail are assessed and quantified, thus enabling tree managers to determine whether or not and to what degree of rigor a survey or inspection of the trees is required. Where necessary, the tree or branch is then considered in terms of both impact potential (size) and the probability of failure within the next 12 months.

Values derived from the assessment of these three components (target, impact potential and probability of failure) are combined to calculate the probability of significant harm occurring. The system moves the management of tree safety away from labelling trees as either 'safe' or 'unsafe', thereby requiring definitive statements of tree safety from either tree surveyors or tree managers. Instead, QTRA quantifies the risk of significant harm from tree failure in a way that enables tree managers to balance safety with tree value and operate to a predetermined limit of reasonable or acceptable risk.

The assessed Risk of Harm for each tree is termed the Risk Index. The Risk Index uses K to represent thousand and M to represent million.

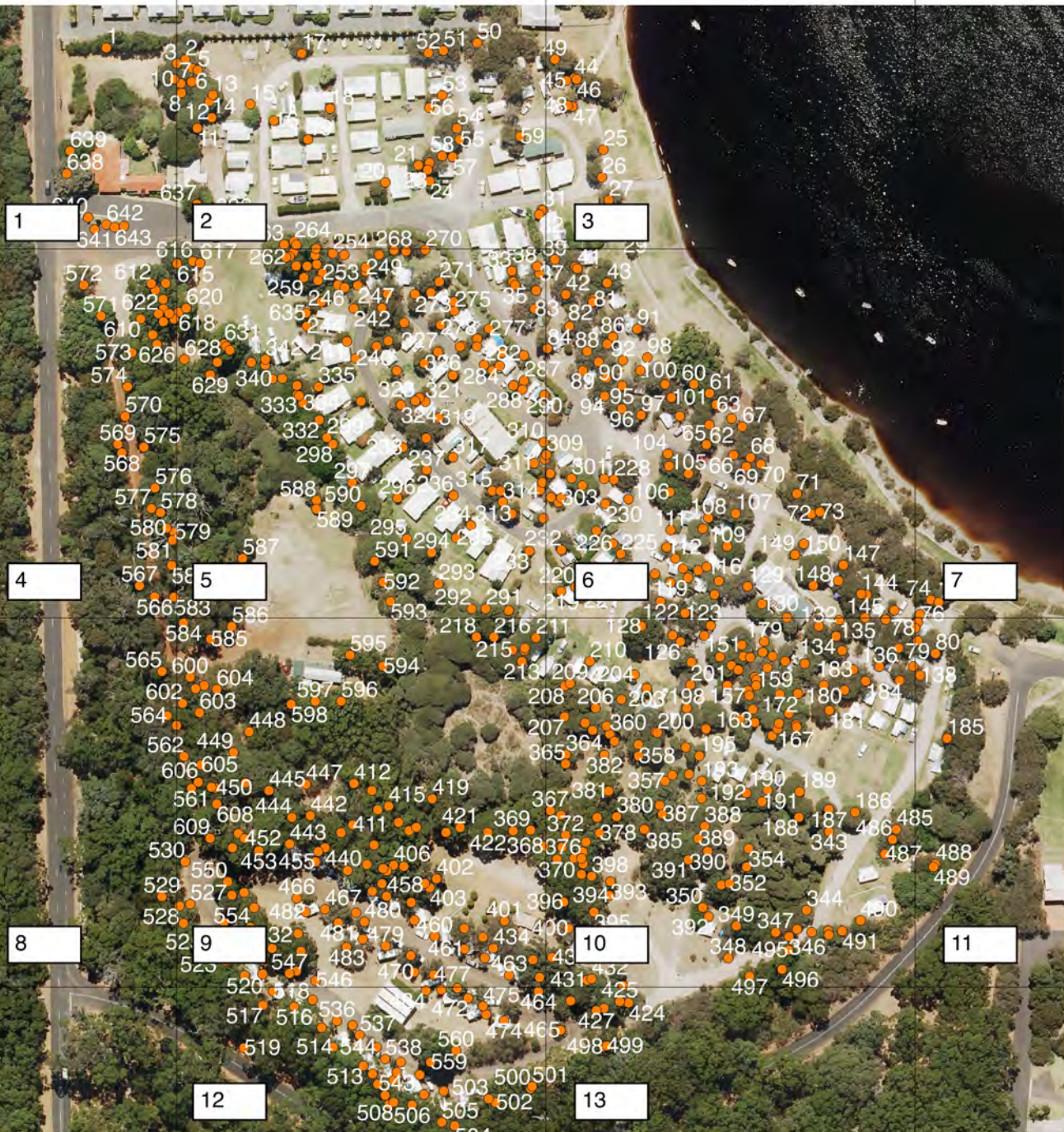
For example: if the annualised risk of harm is 1/10,000, the Risk Index is 10K.

The level of risk that is acceptable for any given tree is ultimately decided by the tree 'owner' and their willingness to accept a certain level of risk associated with a given tree or trees. It is however commonly accepted that a risk of harm of 1 in 10,000 or less is generally and universally considered acceptable in risk management practice be it tree related or non-tree related.



APPENDIX D

Tree Location Maps

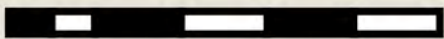


Legend

● Tree

TURNER CARAVAN PARK - TREE LOCATION MAP - SITE OVERVIEW

25 0 25 50 75 100 m

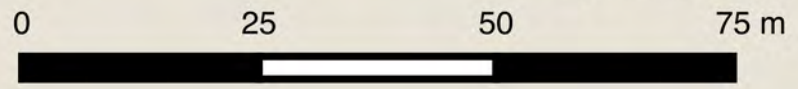


Projection: GDA94 MGA50
Author: BM - Arbor Guy
Data Source: Landgate Imagery



Legend
● Tree

TURNER CARAVAN PARK - TREE LOCATION MAP - MAP 1

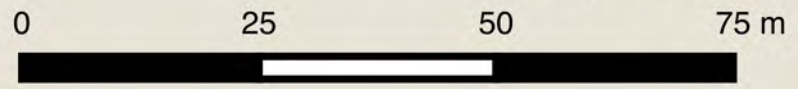


Projection: GDA94 MGA50
Author: BM - Arbor Guy
Data Source: Landgate Imagery



Legend
● Tree

TURNER CARAVAN PARK - TREE LOCATION MAP - MAP 2



Projection: GDA94 MGA50
Author: BM - Arbor Guy
Data Source: Landgate Imagery

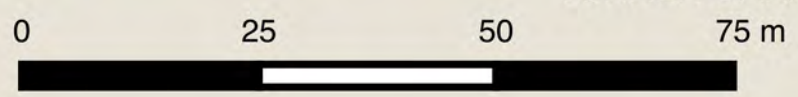
3



Legend

● Tree

TURNER CARAVAN PARK - TREE LOCATION MAP - MAP 3

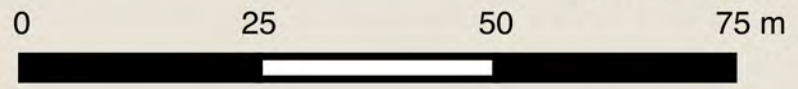


Projection: GDA94 MGA50
Author: BM - Arbor Guy
Data Source: Landgate Imagery



Legend
● Tree

TURNER CARAVAN PARK - TREE LOCATION MAP - MAP 4



Projection: GDA94 MGA50
Author: BM - Arbor Guy
Data Source: Landgate Imagery



Legend

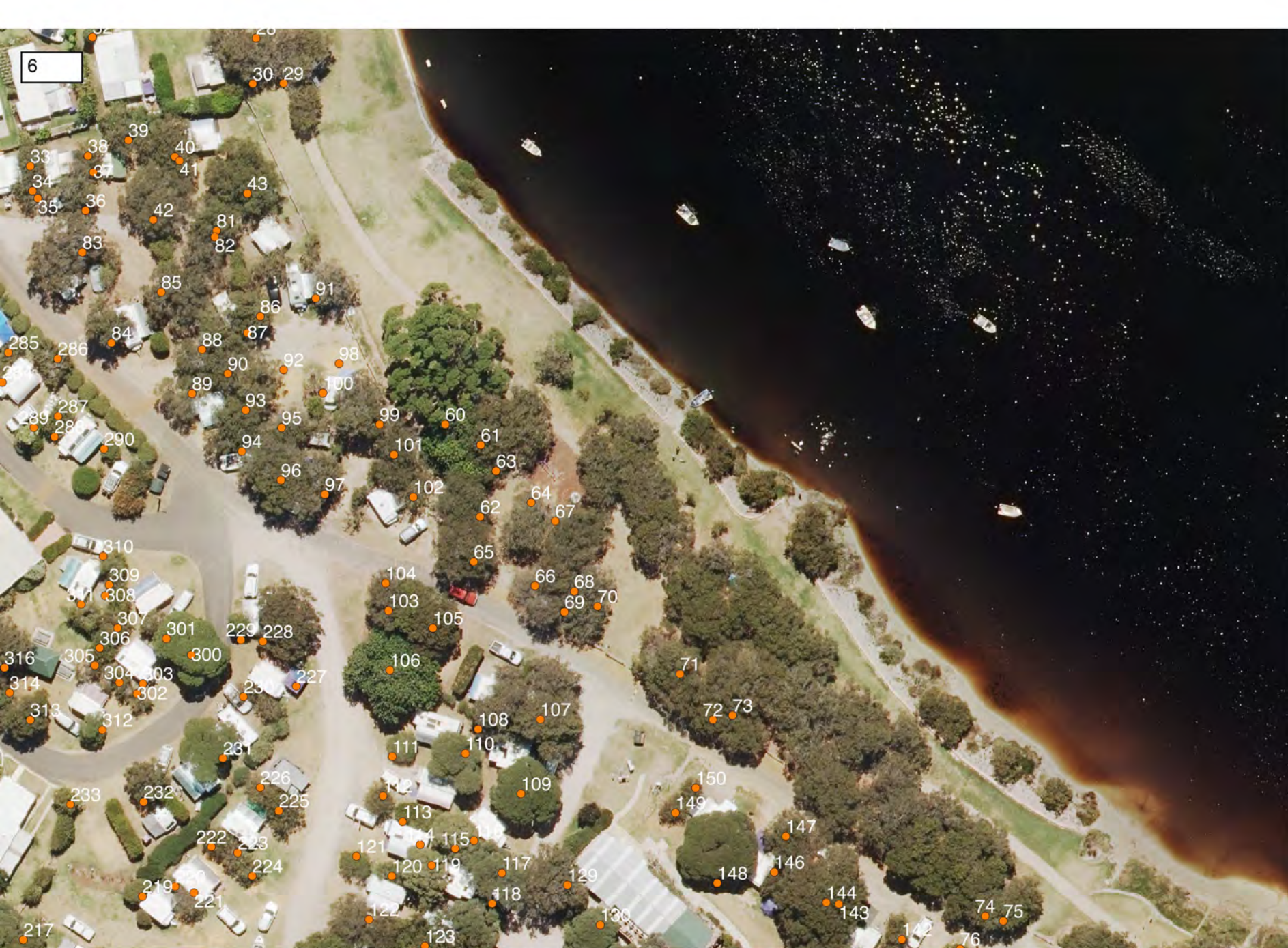
● Tree

TURNER CARAVAN PARK - TREE LOCATION MAP - MAP 5

0 25 50 75 m



Projection: GDA94 MGA50
 Author: BM - Arbor Guy
 Data Source: Landgate Imagery



Legend

● Tree

TURNER CARAVAN PARK - TREE LOCATION MAP - MAP 6

0 25 50 75 m



Projection: GDA94 MGA50
 Author: BM - Arbor Guy
 Data Source: Landgate Imagery



Legend

- Tree

TURNER CARAVAN PARK - TREE LOCATION MAP - MAP 7

0 25 50 75 m



Projection: GDA94 MGA50
Author: BM - Arbor Guy
Data Source: Landgate Imagery



Legend

● Tree

TURNER CARAVAN PARK - TREE LOCATION MAP - MAP 8

0 25 50 75 m

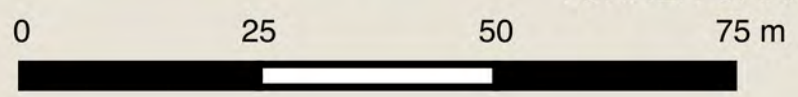


Projection: GDA94 MGA50
Author: BM - Arbor Guy
Data Source: Landgate Imagery



Legend
● Tree

TURNER CARAVAN PARK - TREE LOCATION MAP - MAP 9



Projection: GDA94 MGA50
Author: BM - Arbor Guy
Data Source: Landgate Imagery



Legend

● Tree

TURNER CARAVAN PARK - TREE LOCATION MAP - MAP 10

0 25 50 75 m



Projection: GDA94 MGA50
Author: BM - Arbor Guy
Data Source: Landgate Imagery



Legend

- Tree

TURNER CARAVAN PARK - TREE LOCATION MAP - MAP 11

0 25 50 75 m



Projection: GDA94 MGA50
Author: BM - Arbor Guy
Data Source: Landgate Imagery



Legend

- Tree

TURNER CARAVAN PARK - TREE LOCATION MAP - MAP 12

0 25 50 75 m



Projection: GDA94 MGA50
Author: BM - Arbor Guy
Data Source: Landgate Imagery



Legend

- Tree

TURNER CARAVAN PARK - TREE LOCATION MAP - MAP 13

0 25 50 75 m



Projection: GDA94 MGA50
Author: BM - Arbor Guy
Data Source: Landgate Imagery