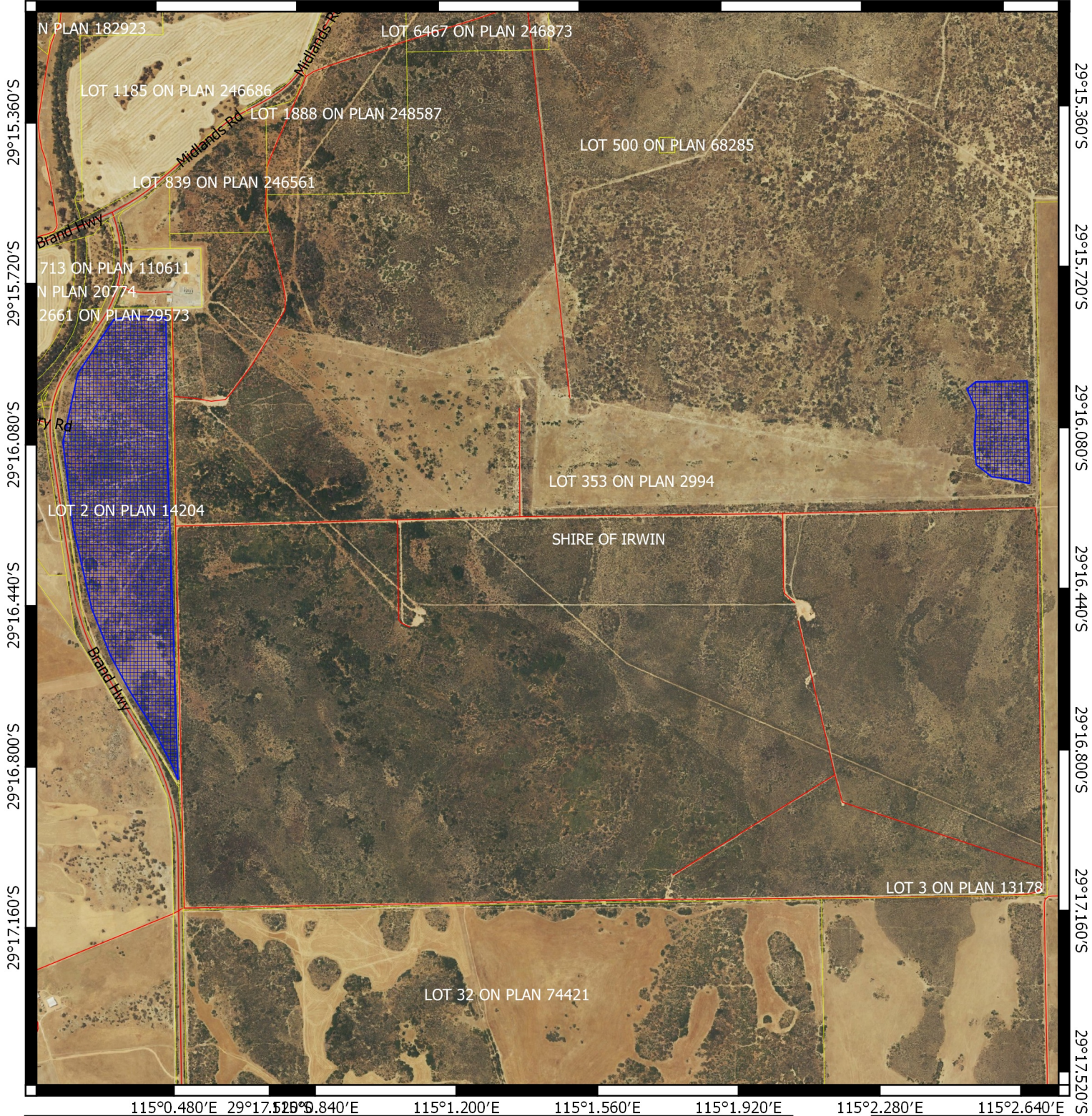


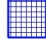



CPS 8361/1 - Map

115°0.480'E 115°0.840'E 115°1.200'E 115°1.560'E 115°1.920'E 115°2.280'E 115°2.640'E



115°0.480'E 115°0.840'E 115°1.200'E 115°1.560'E 115°1.920'E 115°2.280'E 115°2.640'E

Legend

-  CPS areas applied to clear base layers
-  Cadastre
-  Road Centrelines
-  Local Government Authorities
- Image



MGA 94
Geocentric Datum of Australia 1994

Officer with delegated authority under Section 20
of the Environmental Protection Act 1986



GOVERNMENT OF
WESTERN AUSTRALIA