

- Habitat Trees**
- *Corymbia calophylla* (Marri)
  - *Eucalyptus marginata* (Jarrah)
  - *Eucalyptus megacarpa* (Bullich)
  - *Eucalyptus diversicolor* (Karri)
  - ✕ Dead Tree
  - 44 Tree Number (Trees with diameter >50cm at chest height)
  - ✳ Denotes Tree with Comment in Associated Table
- Fauna Locations**
- Main's Assassin Spider Sampling Site
  - ▲ Western Ringtail Possum Location
  - ⊕ Long-Necked Turtle Location

N

0 10 20 30 40 50m

SCALE 1 : 1 750 at A3 (MGA)

**Legend**

- Site Boundary
- Cadastral Boundary
- Topographic Contour
- Clearing Extent
- Vegetation Type Boundary

PINPOINT CARTOGRAPHICS (08) 9562 7136

CONTOUR SOURCE: Dept. of Agriculture, 2000.  
 CADASTRAL SOURCE: Landgate, October 2018.  
 AERIAL PHOTOGRAPH SOURCE: Google Earth, flown November 2017.

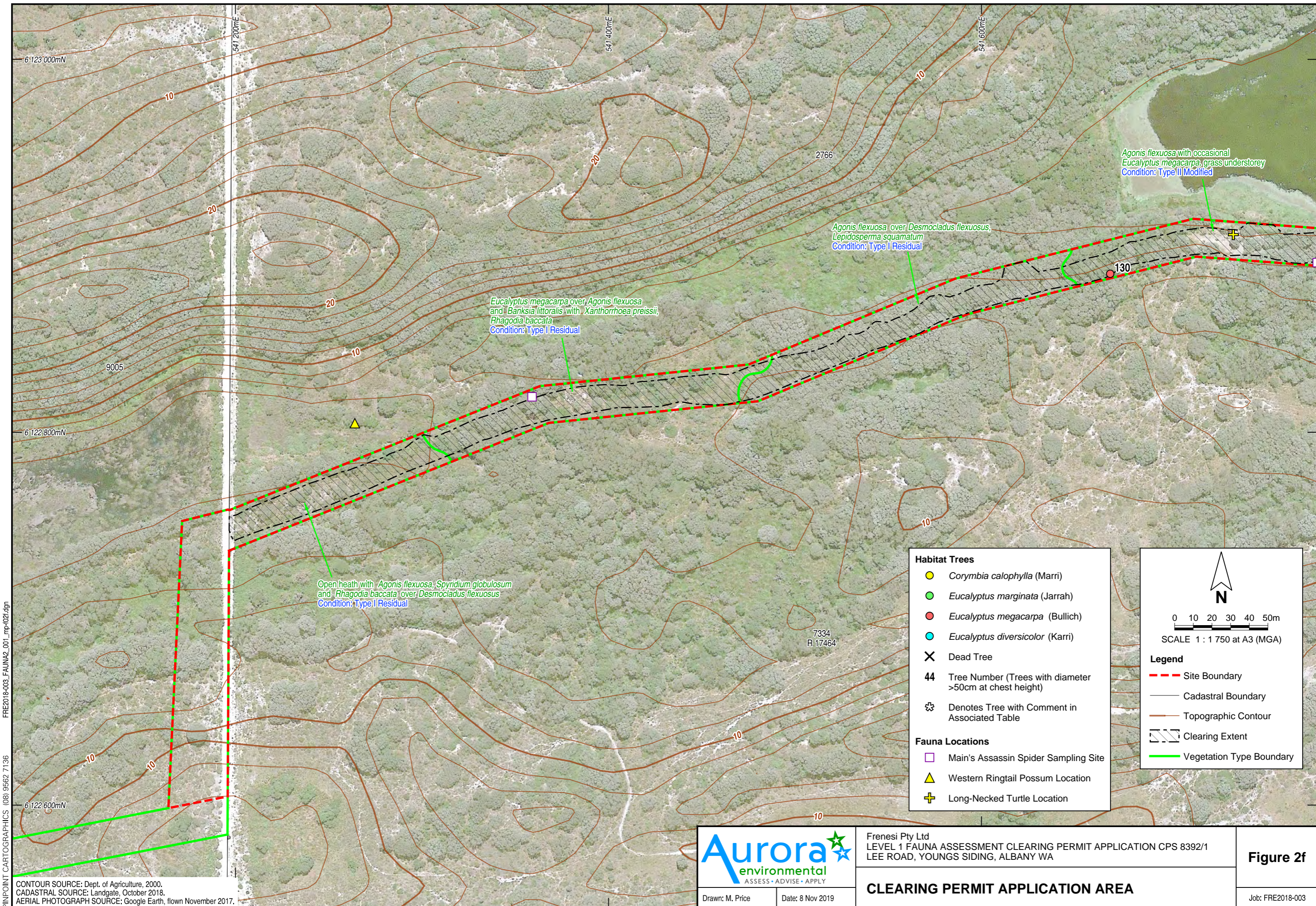
**Aurora** environmental  
 ASSESS • ADVISE • APPLY

Drawn: M. Price      Date: 8 Nov 2019

Frenesi Pty Ltd  
 LEVEL 1 FAUNA ASSESSMENT CLEARING PERMIT APPLICATION CPS 8392/1  
 LEE ROAD, YOUNGS SIDING, ALBANY WA

**CLEARING PERMIT APPLICATION AREA**

**Figure 2e**  
 Job: FRE2018-003



FRE2018-003\_FAUNA2\_001\_mp-102f.dgn  
 PINPOINT CARTOGRAPHICS (08) 9562 7136

CONTOUR SOURCE: Dept. of Agriculture, 2000.  
 CADASTRAL SOURCE: Landgate, October 2018.  
 AERIAL PHOTOGRAPH SOURCE: Google Earth, flown November 2017.

- Habitat Trees**
- *Corymbia calophylla* (Marri)
  - *Eucalyptus marginata* (Jarrah)
  - *Eucalyptus megacarpa* (Bullich)
  - *Eucalyptus diversicolor* (Karri)
  - ✕ Dead Tree
  - 44 Tree Number (Trees with diameter >50cm at chest height)
  - ✳ Denotes Tree with Comment in Associated Table
- Fauna Locations**
- Main's Assassin Spider Sampling Site
  - ▲ Western Ringtail Possum Location
  - ✚ Long-Necked Turtle Location

N  
 0 10 20 30 40 50m  
 SCALE 1 : 1 750 at A3 (MGA)

**Legend**

- Site Boundary
- Cadastral Boundary
- Topographic Contour
- Clearing Extent
- Vegetation Type Boundary

Aurora

environmental

ASSESS • ADVISE • APPLY

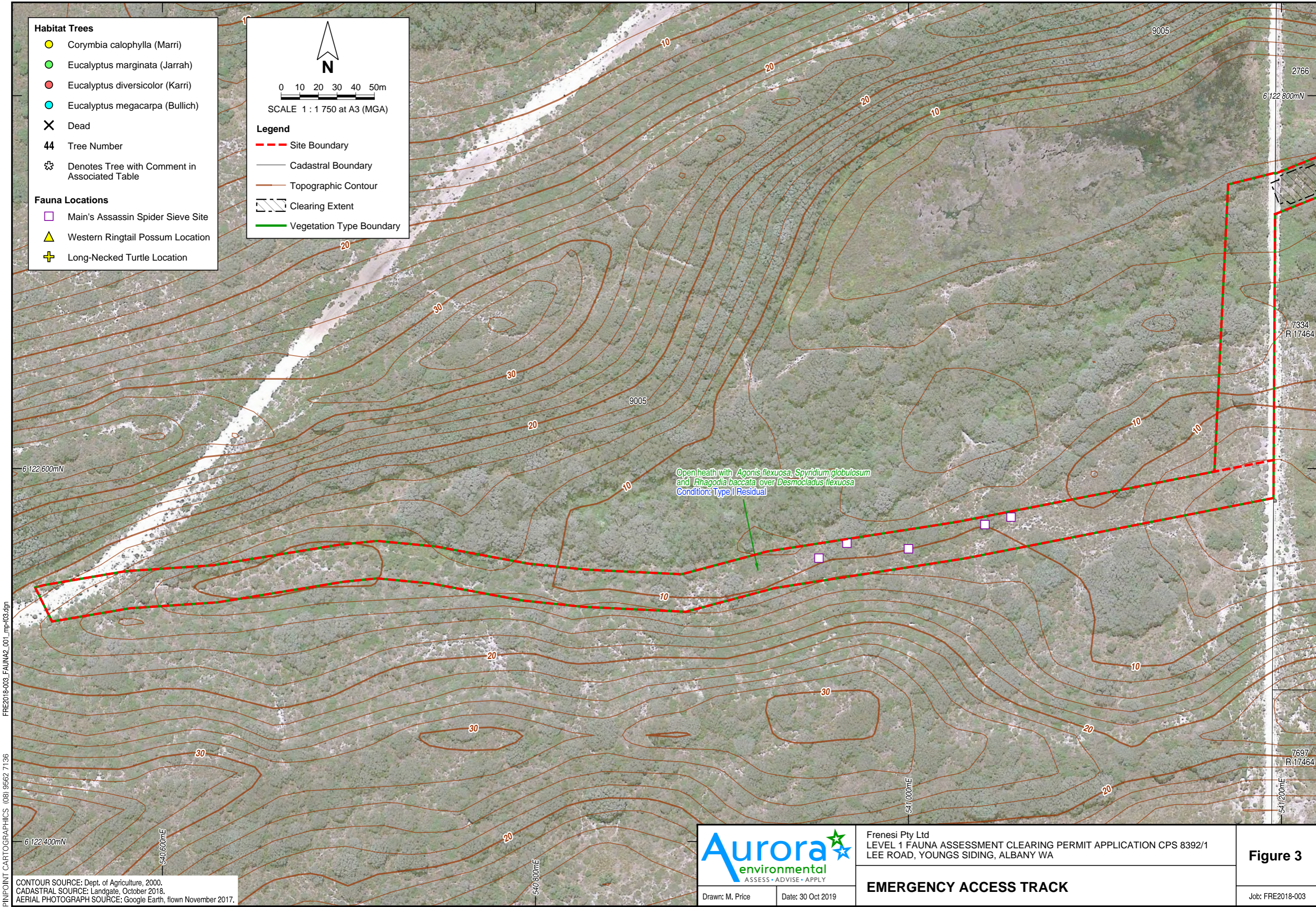
Drawn: M. Price      Date: 8 Nov 2019

Frenesi Pty Ltd  
 LEVEL 1 FAUNA ASSESSMENT CLEARING PERMIT APPLICATION CPS 8392/1  
 LEE ROAD, YOUNGS SIDING, ALBANY WA

CLEARING PERMIT APPLICATION AREA

Figure 2f

Job: FRE2018-003



- Habitat Trees**
- *Corymbia calophylla* (Marri)
  - *Eucalyptus marginata* (Jarrah)
  - *Eucalyptus diversicolor* (Karri)
  - *Eucalyptus megacarpa* (Bullich)
  - ✕ Dead
  - 44 Tree Number
  - ✕ Denotes Tree with Comment in Associated Table
- Fauna Locations**
- Main's Assassin Spider Sieve Site
  - ▲ Western Ringtail Possum Location
  - ✚ Long-Necked Turtle Location

N

0 10 20 30 40 50m

SCALE 1 : 1 750 at A3 (MGA)

**Legend**

- Site Boundary
- Cadastral Boundary
- Topographic Contour
- ▨ Clearing Extent
- Vegetation Type Boundary

Open heath with *Agonis flexuosa*, *Spyridium globulosum* and *Rhagodia baccata* over *Desmodium flexuosa*  
 Condition: Type II Residual

FRE2018-003\_FAUNA2\_001\_mp-003.dgn  
 PINPOINT CARTOGRAPHICS (08) 9562 7136

CONTOUR SOURCE: Dept. of Agriculture, 2000.  
 CADASTRAL SOURCE: Landgate, October 2018.  
 AERIAL PHOTOGRAPH SOURCE: Google Earth, flown November 2017.

**Aurora** environmental  
 ASSESS • ADVISE • APPLY

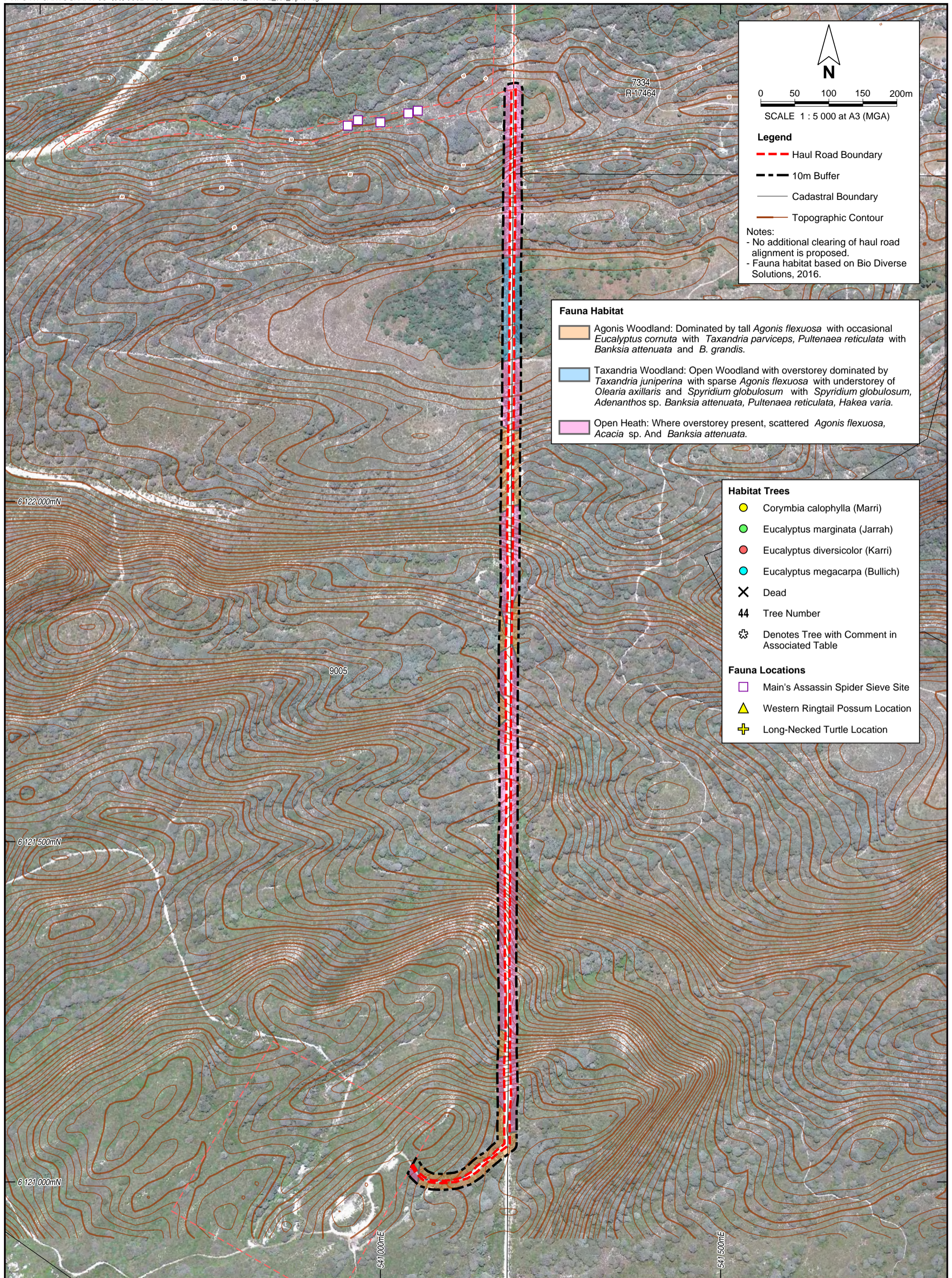
Drawn: M. Price      Date: 30 Oct 2019

Frenesi Pty Ltd  
 LEVEL 1 FAUNA ASSESSMENT CLEARING PERMIT APPLICATION CPS 8392/1  
 LEE ROAD, YOUNGS SIDING, ALBANY WA

**EMERGENCY ACCESS TRACK**

**Figure 3**

Job: FRE2018-003



N

0 50 100 150 200m

SCALE 1 : 5 000 at A3 (MGA)

**Legend**

- - - Haul Road Boundary
- - - 10m Buffer
- Cadastral Boundary
- Topographic Contour

**Notes:**

- No additional clearing of haul road alignment is proposed.
- Fauna habitat based on Bio Diverse Solutions, 2016.

**Fauna Habitat**

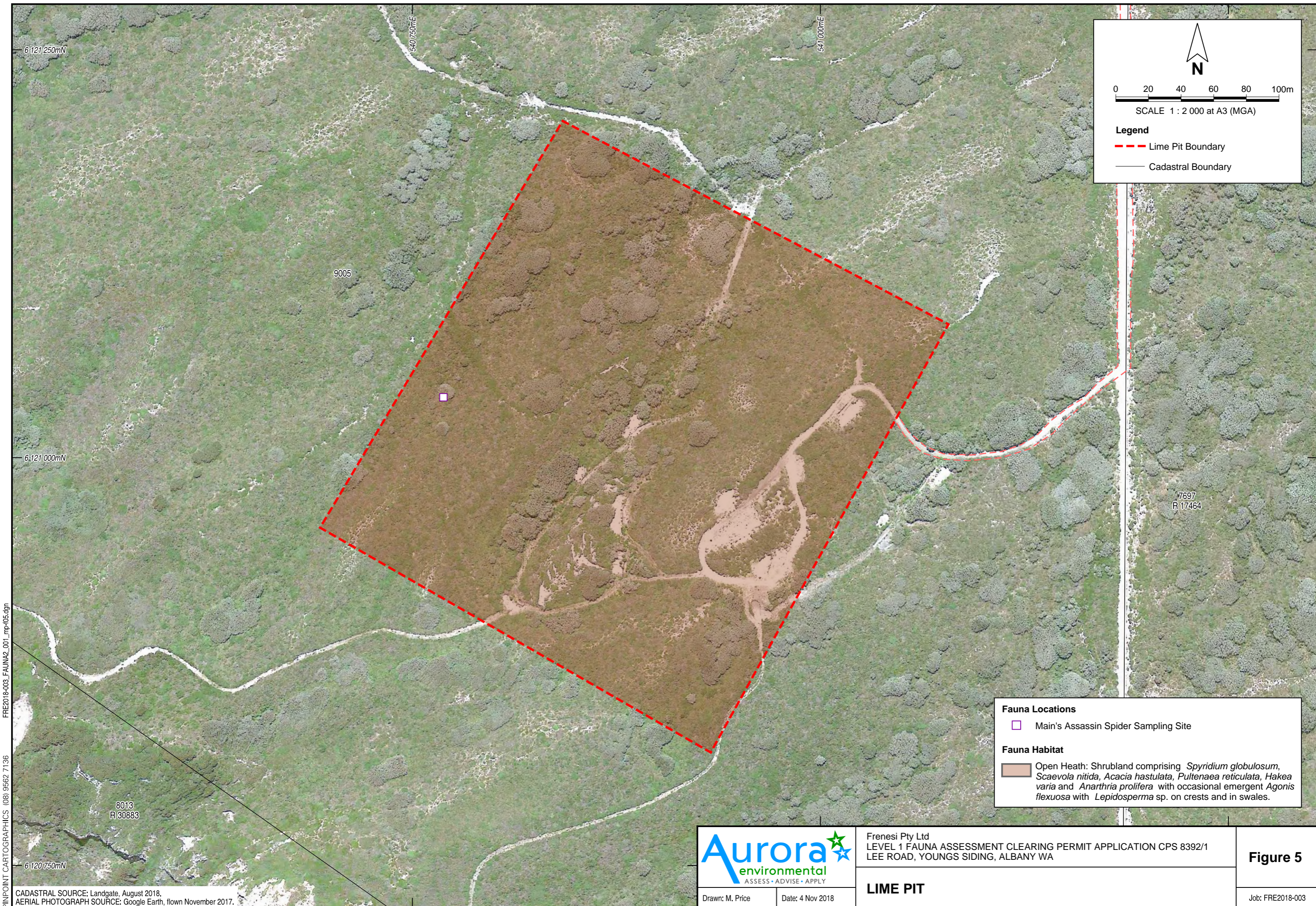
- Agonis Woodland: Dominated by tall *Agonis flexuosa* with occasional *Eucalyptus cornuta* with *Taxandria parviceps*, *Pultenaea reticulata* with *Banksia attenuata* and *B. grandis*.
- Taxandria Woodland: Open Woodland with overstorey dominated by *Taxandria juniperina* with sparse *Agonis flexuosa* with understorey of *Olearia axillaris* and *Spyridium globulosum* with *Spyridium globulosum*, *Adenanthos* sp. *Banksia attenuata*, *Pultenaea reticulata*, *Hakea varia*.
- Open Heath: Where overstorey present, scattered *Agonis flexuosa*, *Acacia* sp. And *Banksia attenuata*.

**Habitat Trees**

- *Corymbia calophylla* (Marri)
- *Eucalyptus marginata* (Jarrah)
- *Eucalyptus diversicolor* (Karri)
- *Eucalyptus megacarpa* (Bullich)
- ✕ Dead
- 44 Tree Number
- ✱ Denotes Tree with Comment in Associated Table

**Fauna Locations**

- Main's Assassin Spider Sieve Site
- ▲ Western Ringtail Possum Location
- + Long-Necked Turtle Location



N

0 20 40 60 80 100m

SCALE 1 : 2 000 at A3 (MGA)

**Legend**

- - - Lime Pit Boundary
- Cadastral Boundary

**Fauna Locations**

- Main's Assassin Spider Sampling Site

**Fauna Habitat**

- Open Heath: Shrubland comprising *Spyridium globulosum*, *Scaevola nitida*, *Acacia hastulata*, *Pultenaea reticulata*, *Hakea varia* and *Anarthria prolifera* with occasional emergent *Agonis flexuosa* with *Lepidosperma* sp. on crests and in swales.

PINPOINT CARTOGRAPHICS (08) 9562 7136

CADASTRAL SOURCE: Landgate, August 2018.  
 AERIAL PHOTOGRAPH SOURCE: Google Earth, flown November 2017.

**Aurora**

environmental  
 ASSESS • ADVISE • APPLY

Drawn: M. Price      Date: 4 Nov 2018

Frenesi Pty Ltd  
 LEVEL 1 FAUNA ASSESSMENT CLEARING PERMIT APPLICATION CPS 8392/1  
 LEE ROAD, YOUNGS SIDING, ALBANY WA

**LIME PIT**

**Figure 5**

Job: FRE2018-003

# **APPENDIX 1**

## Survey Area Photos

**PHOTOGRAPHS OF HABITAT SURVEYED**



**Lime Pit – Open Heath**



**Suspended Leaf Litter in *Agonis* clump**



**Haul Road – Open Heath**



**Emergency Access Track – Open Heath**



**Emergency Access Track – Open Heath**



**Lee Road Reserve – Open Heath**





**Lee Road – Bullich and *Agonis* Woodland with *Banksia* and *Xanthorrhoea***



**Lee Road–*Agonis* Woodland**



**Lee Road – Bullich**



**Lee Road - Agonis Woodland**



**Lake Saide Road - Vegetation and Potential Habitat Tree (Dead)**



**Potential Habitat Tree**



**Lake Saide Road - Potential Habitat Tree**



**Potential Habitat Tree**



**Long-necked Turtle**



**Lee Road - Sand bank with evidence of Long-necked Turtle Nesting**

## **APPENDIX 2**

### NatureMap Search Report

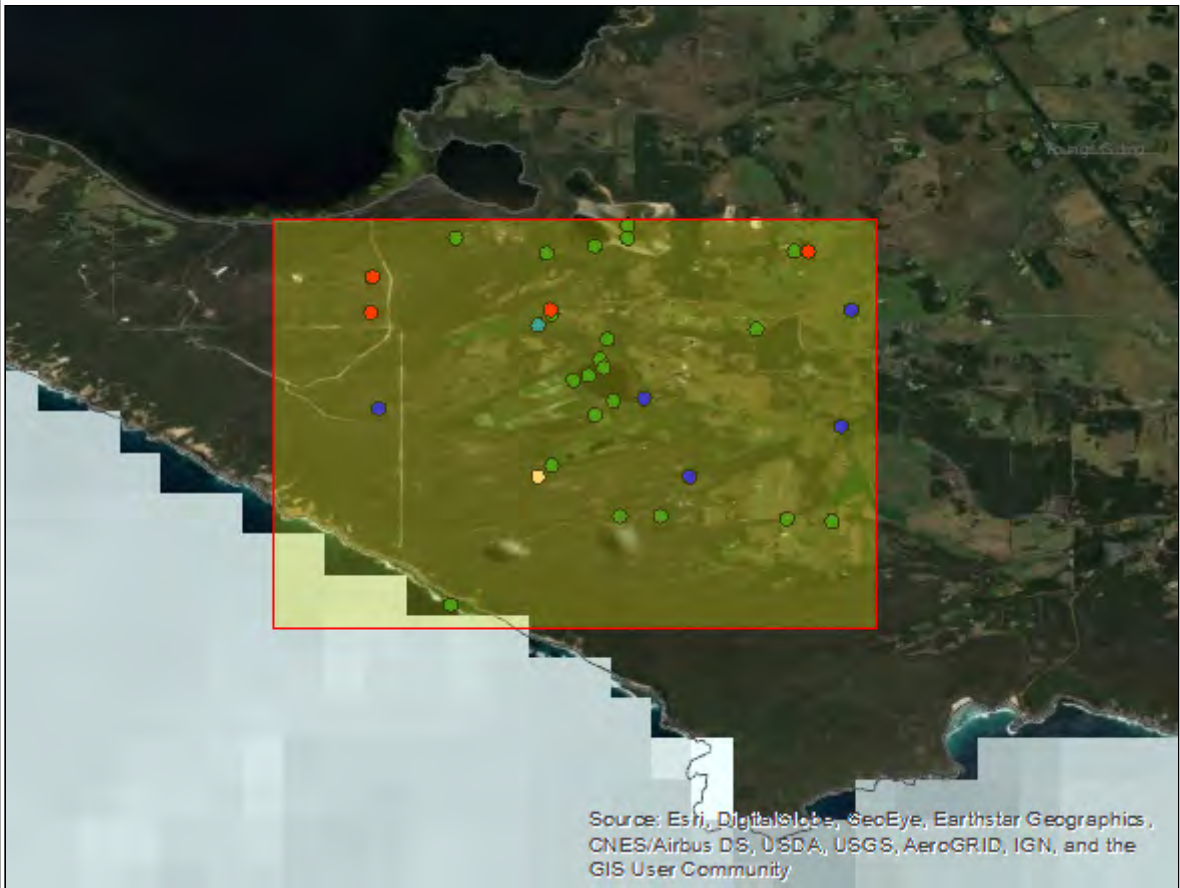
# NatureMap

Mapping Western Australia's biodiversity

## BUi fY'A Udg'GdYWYg

Ú:ã çáÀ^ ÁÕ~ ^•á•^!Á } Ái B-BDFJ

Ei YfmXYHJ'g: Ö'!!^) çpæ ^•ÁJ } | Mí^•LÖ[ |^ÁÖææ^•ÁJ } | Mí^•LÁ ^ç@ äMÖ ÁÜ^&çæ \* |^Öçç) dVFFI »Gí çí ÖÖÆFI »ÁHÇFHÖÖÁH »Ái ÖEEÖÜE HÍ »ÆFçí ÖÜL



Source: Esri, DigitalGlobe, GeoEye, Earthstar Geographics, CNES/Airbus DS, USDA, USGS, AeroGRID, IGN, and the GIS User Community

### GYUFW 'FYgi `lg

Ú^|&çá

- Ú^|&çá
- ÚJ^&á•

ÖMÁÜ^• |ç

- Óáá
- Öæ[ ç|^á[ }
- Öæ@
- Öç^!çá!æ
- T [ ] [ & ç|^á[ }
- Ü^] ç

### FYZfYbW' @mfg

T æ |Á ÖÁ[ , )•

•

T æ |Á ÖÁ[ , )•

•

T æ |Á ÖÁ[ , )•

•

Üæ^Ö[ |á^!•

—



Department of Biodiversity, Conservation and Attractions



# NatureMap Species Report

Created By Guest user on 18/10/2019

**Current Names Only** Yes  
**Core Datasets Only** Yes  
**Method** 'By Rectangle'  
**Extent** 117° 26' 15" E, 117° 30' 13" E, 35° 04' 00" S, 35° 01' 18" S  
**Group By** Species Group

Species Group	Species	Records
Bird	100	547
Dicotyledon	17	17
Fish	3	3
Invertebrate	1	1
Monocotyledon	5	6
Reptile	1	1
<b>TOTAL</b>	<b>127</b>	<b>575</b>

Name ID	Species Name	Naturalised	Conservation Code	Endemic To Query Area
<b>Bird</b>				
1.	24260 <i>Acanthiza apicalis</i> (Broad-tailed Thornbill, Inland Thornbill)			
2.	24261 <i>Acanthiza chrysorrhoa</i> (Yellow-rumped Thornbill)			
3.	24262 <i>Acanthiza inornata</i> (Western Thornbill)			
4.	24560 <i>Acanthorhynchus superciliosus</i> (Western Spinebill)			
5.	25536 <i>Accipiter fasciatus</i> (Brown Goshawk)			
6.	25755 <i>Acrocephalus australis</i> (Australian Reed Warbler)			
7.	24310 <i>Anas castanea</i> (Chestnut Teal)			
8.	24312 <i>Anas gracilis</i> (Grey Teal)			
9.	24315 <i>Anas rhynchotis</i> (Australasian Shoveler)			
10.	24316 <i>Anas superciliosa</i> (Pacific Black Duck)			
11.	24561 <i>Anthochaera carunculata</i> (Red Wattlebird)			
12.	24562 <i>Anthochaera lunulata</i> (Western Little Wattlebird)			
13.	24285 <i>Aquila audax</i> (Wedge-tailed Eagle)			
14.	25558 <i>Ardea ibis</i> (Cattle Egret)			
15.	41324 <i>Ardea modesta</i> (great egret, white egret)			
16.	41326 <i>Ardenna carneipes</i> (Flesh-footed Shearwater, Fleshy-footed Shearwater)		T	
17.	24318 <i>Aythya australis</i> (Hardhead)			
18.	<i>Barnardius zonarius</i>			
19.	24319 <i>Biziura lobata</i> (Musk Duck)			
20.	24784 <i>Calidris ferruginea</i> (Curllew Sandpiper)		T	
21.	24788 <i>Calidris ruficollis</i> (Red-necked Stint)		IA	
22.	24733 <i>Calyptorhynchus baudinii</i> (Baudin's Cockatoo, White-tailed Long-billed Black Cockatoo)		T	
23.	24734 <i>Calyptorhynchus latirostris</i> (Carnaby's Cockatoo, White-tailed Short-billed Black Cockatoo)		T	
24.	48400 <i>Calyptorhynchus</i> sp. (white-tailed black cockatoo)		T	
25.	24377 <i>Charadrius ruficapillus</i> (Red-capped Plover)			
26.	24321 <i>Chenonetta jubata</i> (Australian Wood Duck, Wood Duck)			
27.	<i>Chroicocephalus novaehollandiae</i>			
28.	24288 <i>Circus approximans</i> (Swamp Harrier)			
29.	24774 <i>Cladorhynchus leucocephalus</i> (Banded Stilt)			
30.	25675 <i>Colluricincla harmonica</i> (Grey Shrike-thrush)			
31.	25568 <i>Coracina novaehollandiae</i> (Black-faced Cuckoo-shrike)			
32.	25592 <i>Corvus coronoides</i> (Australian Raven)			
33.	25595 <i>Cracticus tibicen</i> (Australian Magpie)			
34.	25596 <i>Cracticus torquatus</i> (Grey Butcherbird)			
35.	24322 <i>Cygnus atratus</i> (Black Swan)			
36.	30901 <i>Dacelo novaeguineae</i> (Laughing Kookaburra)	Y		
37.	25673 <i>Daphoenositta chrysoptera</i> (Varied Sittella)			
38.	<i>Egretta novaehollandiae</i>			
39.	<i>Elanus axillaris</i>			
40.	47937 <i>Elseyornis melanops</i> (Black-fronted Dotterel)			



Name ID	Species Name	Naturalised	Conservation Code	<sup>1</sup> Endemic To Query Area
41.	24652 <i>Eopsaltria georgiana</i> (White-breasted Robin)			
42.	25621 <i>Falco berigora</i> (Brown Falcon)			
43.	25622 <i>Falco cenchroides</i> (Australian Kestrel, Nankeen Kestrel)			
44.	25624 <i>Falco peregrinus</i> (Peregrine Falcon)		S	
45.	25727 <i>Fulica atra</i> (Eurasian Coot)			
46.	25530 <i>Gerygone fusca</i> (Western Gerygone)			
47.	47962 <i>Glyciphila melanops</i> (Tawny-crowned Honeyeater)			
48.	24443 <i>Grallina cyanoleuca</i> (Magpie-lark)			
49.	24293 <i>Haliaeetus leucogaster</i> (White-bellied Sea-Eagle)			
50.	24295 <i>Haliastur sphenurus</i> (Whistling Kite)			
51.	47965 <i>Hieraaetus morphnoides</i> (Little Eagle)			
52.	25734 <i>Himantopus himantopus</i> (Black-winged Stilt)			
53.	24491 <i>Hirundo neoxena</i> (Welcome Swallow)			
54.	25638 <i>Larus pacificus</i> (Pacific Gull)			
55.	25661 <i>Lichmera indistincta</i> (Brown Honeyeater)			
56.	25650 <i>Malurus elegans</i> (Red-winged Fairy-wren)			
57.	25654 <i>Malurus splendens</i> (Splendid Fairy-wren)			
58.	25758 <i>Megalurus gramineus</i> (Little Grassbird)			
59.	<i>Microcarbo melanoleucos</i>			
60.	48008 <i>Morus serrator</i> (Australasian Gannet)			
61.	24738 <i>Neophema elegans</i> (Elegant Parrot)			
62.	24407 <i>Ocyphaps lophotes</i> (Crested Pigeon)			
63.	24328 <i>Oxyura australis</i> (Blue-billed Duck)		P4	
64.	48591 <i>Pandion cristatus</i> (Osprey, Eastern Osprey)		IA	
65.	25682 <i>Pardalotus striatus</i> (Striated Pardalote)			
66.	24648 <i>Pelecanus conspicillatus</i> (Australian Pelican)			
67.	48061 <i>Petrochelidon nigricans</i> (Tree Martin)			
68.	48066 <i>Petroica boodang</i> (Scarlet Robin)			
69.	25697 <i>Phalacrocorax carbo</i> (Great Cormorant)			
70.	24667 <i>Phalacrocorax sulcirostris</i> (Little Black Cormorant)			
71.	25699 <i>Phalacrocorax varius</i> (Pied Cormorant)			
72.	24409 <i>Phaps chalcoptera</i> (Common Bronzewing)			
73.	48071 <i>Phylidonyris niger</i> (White-cheeked Honeyeater)			
74.	24596 <i>Phylidonyris novaehollandiae</i> (New Holland Honeyeater)			
75.	24841 <i>Platalea flavipes</i> (Yellow-billed Spoonbill)			
76.	25720 <i>Platycercus icterotis</i> (Western Rosella)			
77.	24383 <i>Pluvialis squatarola</i> (Grey Plover)		IA	
78.	25703 <i>Podargus strigoides</i> (Tawny Frogmouth)			
79.	24681 <i>Poliiocephalus poliocephalus</i> (Hoary-headed Grebe)			
80.	25731 <i>Porphyrio porphyrio</i> (Purple Swamphen)			
81.	24769 <i>Porzana fluminea</i> (Australian Spotted Crane)			
82.	25732 <i>Porzana pusilla</i> (Baillon's Crane)			
83.	24771 <i>Porzana tabuensis</i> (Spotless Crane)			
84.	25579 <i>Psophodes nigrogularis</i> (Western Whipbird)		T	
85.	24388 <i>Psophodes nigrogularis</i> subsp. <i>nigrogularis</i> (Western Whipbird (western heath))		T	
86.	<i>Purpurecephalus spurius</i>			
87.	24776 <i>Recurvirostra novaehollandiae</i> (Red-necked Avocet)			
88.	48096 <i>Rhipidura albiscapa</i> (Grey Fantail)			
89.	25614 <i>Rhipidura leucophrys</i> (Willie Wagtail)			
90.	25534 <i>Sericornis frontalis</i> (White-browed Scrubwren)			
91.	24645 <i>Stagonopleura oculata</i> (Red-eared Firetail)			
92.	24329 <i>Stictonetta naevosa</i> (Freckled Duck)			
93.	25655 <i>Stipiturus malachurus</i> (Southern Emu-wren)			
94.	25597 <i>Strepera versicolor</i> (Grey Currawong)			
95.	24331 <i>Tadorna tadornoides</i> (Australian Shelduck, Mountain Duck)			
96.	24845 <i>Threskiornis spinicollis</i> (Straw-necked Ibis)			
97.	25549 <i>Todiramphus sanctus</i> (Sacred Kingfisher)			
98.	24808 <i>Tringa nebularia</i> (Common Greenshank, greenshank)		IA	
99.	24809 <i>Tringa stagnatilis</i> (Marsh Sandpiper, little greenshank)		IA	
100.	25765 <i>Zosterops lateralis</i> (Grey-breasted White-eye, Silvereye)			

### Dicotyledon

101.	7851 <i>Asteridea pulverulenta</i> (Common Bristle Daisy)			
102.	5364 <i>Baeckea pygmaea</i>			
103.	1830 <i>Banksia littoralis</i> (Swamp Banksia, Pungura)			
104.	5605 <i>Eucalyptus cornuta</i> (Yate, Yeid)			
105.	3891 <i>Gastrolobium bilobum</i> (Heart Leaf Poison)			
106.	2137 <i>Hakea ceratophylla</i> (Horned Leaf Hakea)			
107.	5126 <i>Hibbertia furfuracea</i>			
108.	3965 <i>Hovea elliptica</i> (Tree Hovea)			
109.	6396 <i>Leucopogon glabellus</i>			

Name ID	Species Name	Naturalised	Conservation Code	<sup>1</sup> Endemic To Query Area
110.	34676 <i>Meionectes brownii</i> (Swamp Raspwort)			
111.	5902 <i>Melaleuca densa</i>			
112.	6198 <i>Myriophyllum salsugineum</i>			
113.	4358 <i>Oxalis purpurea</i> (Largeflower Wood Sorrel)	Y		
114.	5251 <i>Pimelea imbricata</i>			
115.	5252 <i>Pimelea lanata</i>			
116.	7678 <i>Stylidium adnatum</i> (Common Beaked Triggerplant)			
117.	20115 <i>Taxandria juniperina</i>			

### Fish

118.	<i>Edelia vittata</i>			
119.	<i>Gambusia affinis</i>			
120.	<i>Pseudogobius olorum</i>			

### Invertebrate

121.	42361 <i>Zephyrarchaea mainae</i> (Main's assassin spider)		T	
------	--	--	---	--

### Monocotyledon

122.	1605 <i>Caladenia marginata</i> (White Fairy Orchid)			
123.	1636 <i>Diuris pauciflora</i>			
124.	533 <i>Paspalum vaginatum</i> (Salt Water Couch)			
125.	44492 <i>Stuckenia pectinata</i>			
126.	1354 <i>Thysanotus tenellus</i>			

### Reptile

127.	25049 <i>Ctenotus labillardieri</i>			
------	-------------------------------------	--	--	--

#### Conservation Codes

T - Rare or likely to become extinct  
 X - Presumed extinct  
 IA - Protected under international agreement  
 S - Other specially protected fauna  
 1 - Priority 1  
 2 - Priority 2  
 3 - Priority 3  
 4 - Priority 4  
 5 - Priority 5

<sup>1</sup> For NatureMap's purposes, species flagged as endemic are those whose records are wholly contained within the search area. Note that only those records complying with the search criterion are included in the calculation. For example, if you limit records to those from a specific datasource, only records from that datasource are used to determine if a species is restricted to the query area.

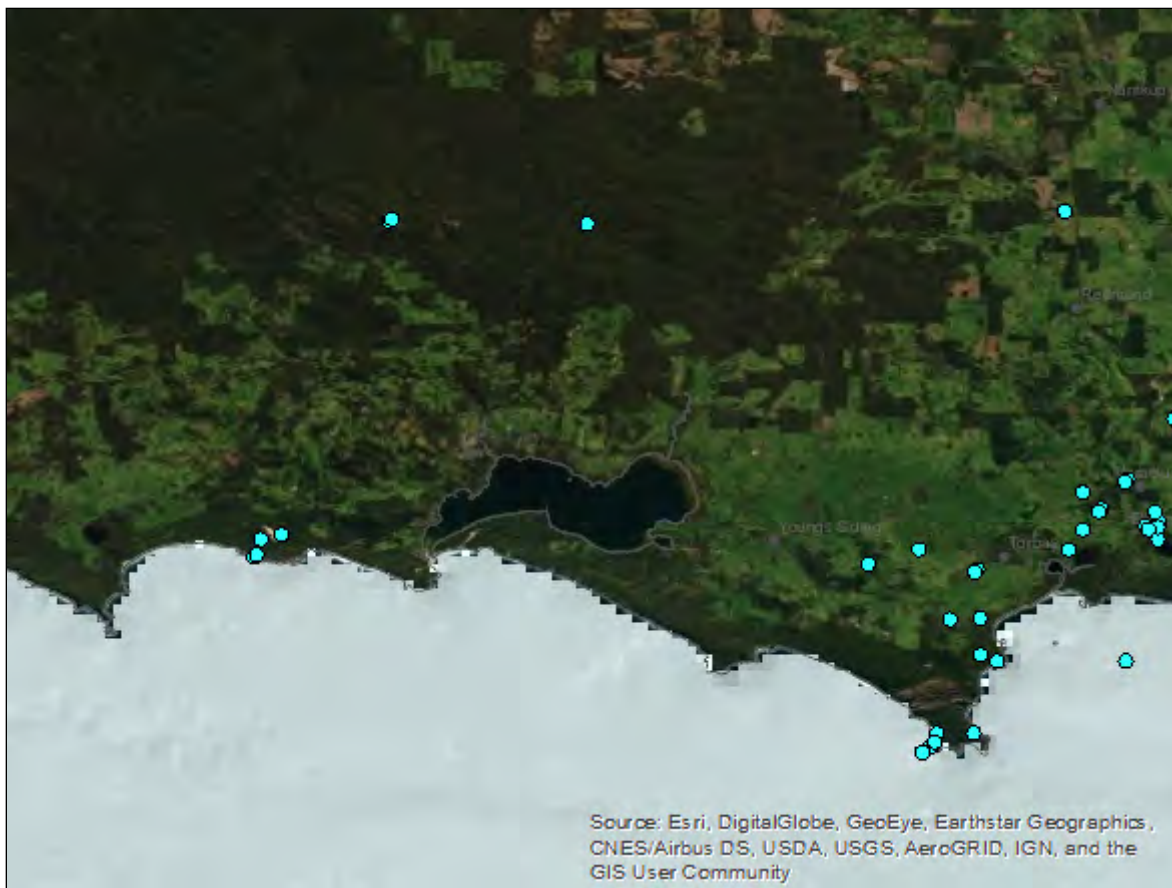
# NatureMap

Mapping Western Australia's biodiversity

## KFD

Ú:q ðá&^ ÁÕ~ ^•Á•^!Á } Á DEFJ

Ei YfmXYHJg: Paæ ^Mú•^ á[ &@ã~ •Á &&ã^) æã LÁÕ ||^) ðPaæ ^•ÁÚ } |Mÿ•LÁÓ |^ÁÕææ ^•ÁÚ } |Mÿ•



### GYUW FYgi `tg

Ú^&ðã

- Ú^&ðãÁÚ] ^&ã•

ØÁÚ^• |ø

- Ö^æ |ø
- Ô[ }-ã{ ^ã
- Ô[ ||^&ðã
- Ü^] [ |ðã

### FYZfYbW@JmYfg

T æ |Á ÇÁ[ , )•

•

T æ |Á ÇÁ[ , )•

•

T æ |Á ÇÁ[ , )•

•

Úæ ÁÓ[ |ã^!•

—



Department of Biodiversity, Conservation and Attractions



Paæ |AT æ |^ æã [æã |æã^Á[ |ð&ð- Á@ÁÕ] æð ^) ð-ÁÓã áã^!• æ EÖ[ ]•^|çæã } Áã áÁÇðæã } •ÉY ^•ç!} ÁÇ•ðæãæã áã@Á ^•ç!} ÁÇ•ðæã Á^•^ ( É

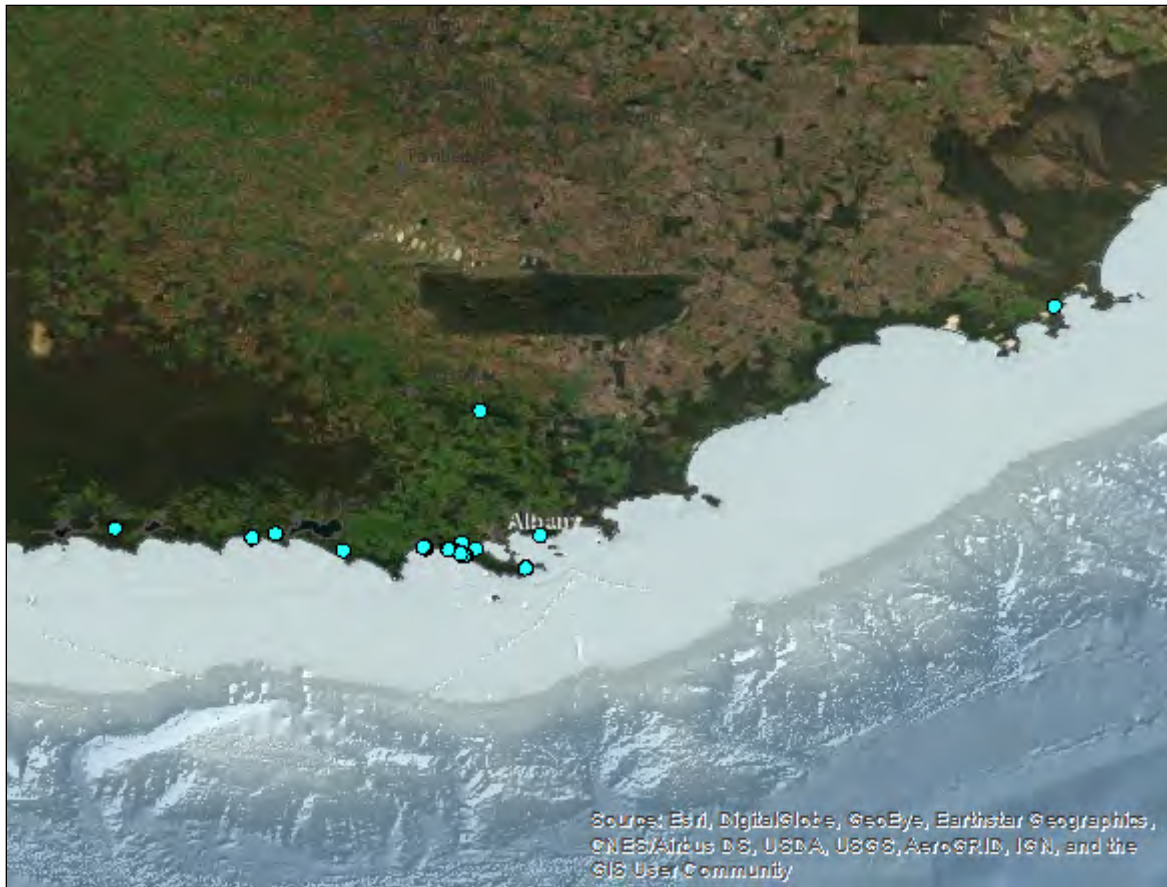
# NatureMap

Mapping Western Australia's biodiversity

## A Ujbfj 5 ggUggjb`Gd]XYf

Ú:q d`áÁ^ ÁÖ`^•Á•^|Á } Á FDFJ

Ei YfmXYUJg. 'Paef ^MZ^ @!æ&@ææ æææLÖ`!!^} ofæ ^•ÁJ} |M`^•LÖ[ !^ÁÖææ^oÁJ} |M`^•



Source: Esri, DigitalGlobe, GeoEye, Earthstar Geographics, CNES/Airbus DS, USDA, USGS, AeroGRID, IGN, and the GIS User Community

### GYUW`FYgi`Iq

Ú^&æ

- Ú^&æÁJ ^æ•

ÖjÁ^• |o

- Ö^æ |c
- Ö[ }-á{ ^á
- Ö[ !!&æ
- Ü^] [!æ

### FYZfYbW`@JmYg

T æ |Á ÖÁ[ , }•

•

T æ |Á ÖÁ[ , }•

•

ÚæÁÖ[ !á^•

—



## **APPENDIX 3**

DBCA Threatened Fauna Data Base



Attn: Melanie Price  
Aurora Environmental  
76 Festing Street  
Albany WA 6330

Dear Melanie,

### REQUEST FOR THREATENED AND PRIORITY FAUNA INFORMATION

I refer to your request on the 20 July 2018 for information on threatened and priority fauna occurring within the vicinity of the Nullaki Peninsula project area (plus 20 km buffer).

A search was undertaken for this area from the Department's threatened fauna databases, which include species that are declared as '*likely to become extinct* (critically endangered, endangered or vulnerable)', '*Migratory birds protected under an international agreement*', '*Conservation dependent fauna*' and '*Other specially protected fauna*'.

Attached are the conditions and disclaimers under which this information has been supplied. Your attention is specifically drawn to the second point referring to the confidentiality levels associated with the supply of this information and the seventh point that refers to the requirement to undertake field investigations for an accurate determination of threatened fauna occurrence at a site. The information supplied should be regarded as an indication only of the threatened and priority fauna that may be present.

An invoice for \$300.00 (plus GST), being the set charge for the supply of this information, will be forwarded.

It would be appreciated if any occurrences of threatened fauna encountered by you in the area could be reported to this Department to ensure their ongoing management.

If you require any further details, or wish to discuss threatened fauna management, please contact me on (08) 9219 9523.

Kind regards,

.....  
**Amy Mutton**  
Zoologist  
Department of Biodiversity, Conservation and Attractions  
3 August 2018

## **ATTACHMENT: THREATENED AND PRIORITY FAUNA INFORMATION CONDITIONS OF SUPPLY**

### *Conditions with Respect to the Supply of Information*

- The data supplied may not be provided to any other organisations, nor be used for any purpose other than for the project for which it has been originally provided for; without the prior consent of the Executive Director, Department of Biodiversity, Conservation and Attractions.
- Specific locality information for threatened fauna is regarded as confidential, and should be treated as such by receiving organisations. Specific locality information for threatened fauna may not be used in reports without the written permission of the Executive Director, Department of Biodiversity, Conservation and Attractions. Reports may only show generalised locations at a low resolution or, where necessary, show specific locations without identifying species. Species and Communities Program is to be contacted regarding written permission requests and for guidance on the presentation of threatened fauna information.
- The Department of Biodiversity, Conservation and Attractions respects the privacy of private landowners who may have threatened and priority fauna on their property. Threatened and priority fauna locations identified in the data as being on private property should be treated in confidence, and contact with property owners must only be made through the Department of Biodiversity, Conservation and Attractions.
- Acknowledgment of the Department of Biodiversity, Conservation and Attractions as the source of data is to be made in any published material and cited as Department of Biodiversity, Conservation and Attractions (2018) Threatened and Priority Fauna Database Search for [search area] accessed on the [date of search]. Prepared by the Species and Communities Program for [Requesters name and company] for [purpose of search].
- Copies of all such publications are to be forwarded to the Department of Biodiversity, Conservation and Attractions, Attention; Principal Zoologist, Species and Communities Program.

### *Disclaimers with Respect to the Supply of Information*

- Receiving organisations should note that while every effort has been made to prevent errors and omissions in the data, they may be present. The Department of Biodiversity, Conservation and Attractions accepts no responsibility for this.
- Receiving organisations must also recognise that the database is subject to continual updating and amendment, and such considerations should be taken into account by the user.
- It should be noted that the supplied data does not necessarily represent a comprehensive listing of the threatened fauna of the area in question. Its comprehensiveness is dependent on the amount of surveys carried out within a specified area. The receiving organisation should consider engaging a biologist/zoologist, if required, to undertake a survey of the area under consideration.

## **APPENDIX 4**

### Protected Matters Search Tool





# EPBC Act Protected Matters Report

This report provides general guidance on matters of national environmental significance and other matters protected by the EPBC Act in the area you have selected.

Information on the coverage of this report and qualifications on data supporting this report are contained in the caveat at the end of the report.

Information is available about [Environment Assessments](#) and the EPBC Act including significance guidelines, forms and application process details.

Report created: 16/10/19 17:52:45

[Summary](#)

[Details](#)

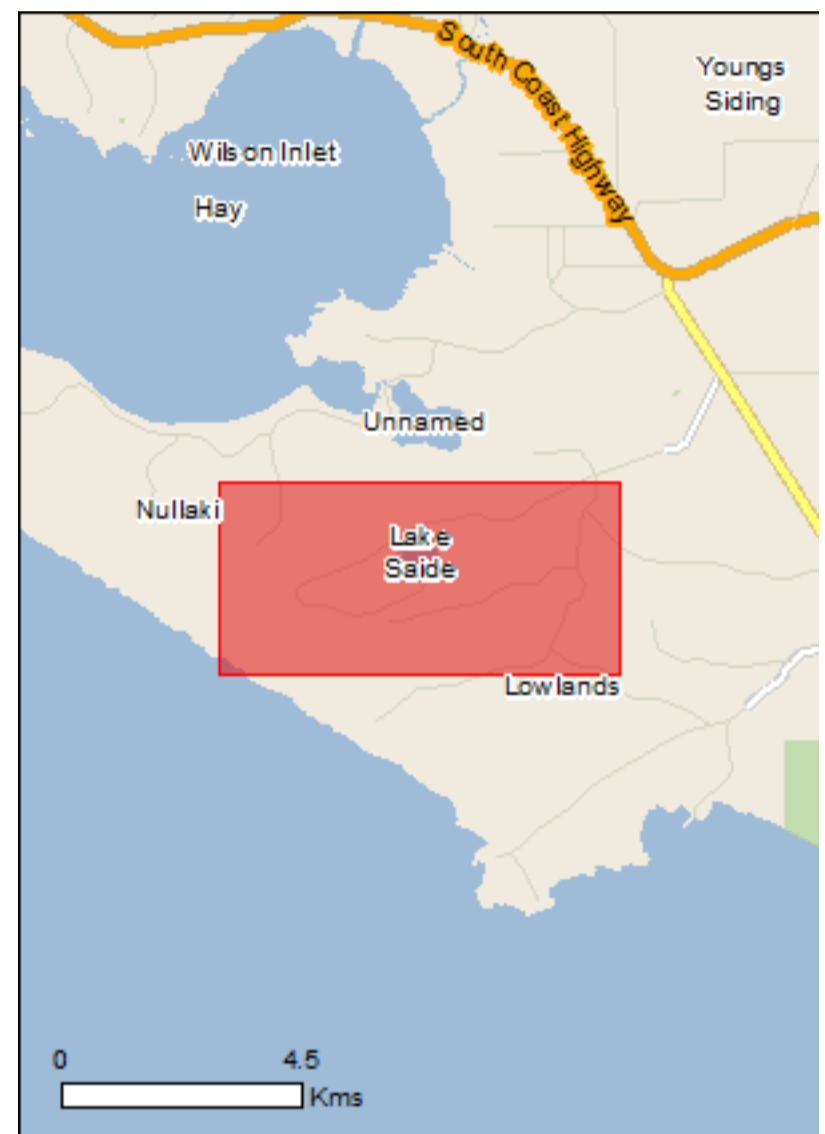
[Matters of NES](#)

[Other Matters Protected by the EPBC Act](#)

[Extra Information](#)

[Caveat](#)

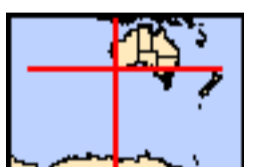
[Acknowledgements](#)



This map may contain data which are ©Commonwealth of Australia (Geoscience Australia), ©PSMA 2010

[Coordinates](#)

[Buffer: 1.0Km](#)



# Summary

## Matters of National Environmental Significance

This part of the report summarises the matters of national environmental significance that may occur in, or may relate to, the area you nominated. Further information is available in the detail part of the report, which can be accessed by scrolling or following the links below. If you are proposing to undertake an activity that may have a significant impact on one or more matters of national environmental significance then you should consider the [Administrative Guidelines on Significance](#).

<a href="#">World Heritage Properties:</a>	None
<a href="#">National Heritage Places:</a>	None
<a href="#">Wetlands of International Importance:</a>	None
<a href="#">Great Barrier Reef Marine Park:</a>	None
<a href="#">Commonwealth Marine Area:</a>	None
<a href="#">Listed Threatened Ecological Communities:</a>	1
<a href="#">Listed Threatened Species:</a>	47
<a href="#">Listed Migratory Species:</a>	59

## Other Matters Protected by the EPBC Act

This part of the report summarises other matters protected under the Act that may relate to the area you nominated. Approval may be required for a proposed activity that significantly affects the environment on Commonwealth land, when the action is outside the Commonwealth land, or the environment anywhere when the action is taken on Commonwealth land. Approval may also be required for the Commonwealth or Commonwealth agencies proposing to take an action that is likely to have a significant impact on the environment anywhere.

The EPBC Act protects the environment on Commonwealth land, the environment from the actions taken on Commonwealth land, and the environment from actions taken by Commonwealth agencies. As heritage values of a place are part of the 'environment', these aspects of the EPBC Act protect the Commonwealth Heritage values of a Commonwealth Heritage place. Information on the new heritage laws can be found at <http://www.environment.gov.au/heritage>

A [permit](#) may be required for activities in or on a Commonwealth area that may affect a member of a listed threatened species or ecological community, a member of a listed migratory species, whales and other cetaceans, or a member of a listed marine species.

<a href="#">Commonwealth Land:</a>	None
<a href="#">Commonwealth Heritage Places:</a>	None
<a href="#">Listed Marine Species:</a>	81
<a href="#">Whales and Other Cetaceans:</a>	12
<a href="#">Critical Habitats:</a>	None
<a href="#">Commonwealth Reserves Terrestrial:</a>	None
<a href="#">Australian Marine Parks:</a>	None

## Extra Information

This part of the report provides information that may also be relevant to the area you have nominated.

<a href="#">State and Territory Reserves:</a>	None
<a href="#">Regional Forest Agreements:</a>	None
<a href="#">Invasive Species:</a>	20
<a href="#">Nationally Important Wetlands:</a>	None
<a href="#">Key Ecological Features (Marine)</a>	None

# Details

## Matters of National Environmental Significance

### Listed Threatened Ecological Communities

[ [Resource Information](#) ]

For threatened ecological communities where the distribution is well known, maps are derived from recovery plans, State vegetation maps, remote sensing imagery and other sources. Where threatened ecological community distributions are less well known, existing vegetation maps and point location data are used to produce indicative distribution maps.

Name	Status	Type of Presence
<a href="#">Subtropical and Temperate Coastal Saltmarsh</a>	Vulnerable	Community likely to occur within area

### Listed Threatened Species

[ [Resource Information](#) ]

Name	Status	Type of Presence
------	--------	------------------

#### Birds

<a href="#">Botaurus poiciloptilus</a> Australasian Bittern [1001]	Endangered	Species or species habitat likely to occur within area
<a href="#">Calidris canutus</a> Red Knot, Knot [855]	Endangered	Species or species habitat known to occur within area
<a href="#">Calidris ferruginea</a> Curlew Sandpiper [856]	Critically Endangered	Species or species habitat known to occur within area
<a href="#">Calidris tenuirostris</a> Great Knot [862]	Critically Endangered	Roosting known to occur within area
<a href="#">Calyptorhynchus banksii naso</a> Forest Red-tailed Black-Cockatoo, Karrak [67034]	Vulnerable	Species or species habitat likely to occur within area
<a href="#">Calyptorhynchus baudinii</a> Baudin's Cockatoo, Long-billed Black-Cockatoo [769]	Endangered	Breeding likely to occur within area
<a href="#">Calyptorhynchus latirostris</a> Carnaby's Cockatoo, Short-billed Black-Cockatoo [59523]	Endangered	Species or species habitat known to occur within area
<a href="#">Charadrius leschenaultii</a> Greater Sand Plover, Large Sand Plover [877]	Vulnerable	Roosting known to occur within area
<a href="#">Charadrius mongolus</a> Lesser Sand Plover, Mongolian Plover [879]	Endangered	Roosting known to occur within area
<a href="#">Diomedea antipodensis</a> Antipodean Albatross [64458]	Vulnerable	Foraging, feeding or related behaviour likely to occur within area
<a href="#">Diomedea dabbenena</a> Tristan Albatross [66471]	Endangered	Species or species habitat may occur within area
<a href="#">Diomedea epomophora</a> Southern Royal Albatross [89221]	Vulnerable	Foraging, feeding or

Name	Status	Type of Presence
<a href="#">Diomedea exulans</a> Wandering Albatross [89223]	Vulnerable	related behaviour likely to occur within area
<a href="#">Diomedea sanfordi</a> Northern Royal Albatross [64456]	Endangered	Foraging, feeding or related behaviour likely to occur within area
<a href="#">Limosa lapponica baueri</a> Bar-tailed Godwit (baueri), Western Alaskan Bar-tailed Godwit [86380]	Vulnerable	Species or species habitat may occur within area
<a href="#">Limosa lapponica menzbieri</a> Northern Siberian Bar-tailed Godwit, Bar-tailed Godwit (menzbieri) [86432]	Critically Endangered	Species or species habitat may occur within area
<a href="#">Macronectes giganteus</a> Southern Giant-Petrel, Southern Giant Petrel [1060]	Endangered	Species or species habitat may occur within area
<a href="#">Macronectes halli</a> Northern Giant Petrel [1061]	Vulnerable	Species or species habitat may occur within area
<a href="#">Numenius madagascariensis</a> Eastern Curlew, Far Eastern Curlew [847]	Critically Endangered	Species or species habitat likely to occur within area
<a href="#">Pachyptila turtur subantarctica</a> Fairy Prion (southern) [64445]	Vulnerable	Species or species habitat likely to occur within area
<a href="#">Phoebastria fusca</a> Sooty Albatross [1075]	Vulnerable	Species or species habitat likely to occur within area
<a href="#">Sternula nereis nereis</a> Australian Fairy Tern [82950]	Vulnerable	Foraging, feeding or related behaviour likely to occur within area
<a href="#">Thalassarche cauta cauta</a> Shy Albatross, Tasmanian Shy Albatross [82345]	Vulnerable	Foraging, feeding or related behaviour likely to occur within area
<a href="#">Thalassarche cauta steadi</a> White-capped Albatross [82344]	Vulnerable	Foraging, feeding or related behaviour likely to occur within area
<a href="#">Thalassarche impavida</a> Campbell Albatross, Campbell Black-browed Albatross [64459]	Vulnerable	Species or species habitat may occur within area
<a href="#">Thalassarche melanophris</a> Black-browed Albatross [66472]	Vulnerable	Species or species habitat may occur within area
<b>Fish</b>		
<a href="#">Nannatherina balstoni</a> Balston's Pygmy Perch [66698]	Vulnerable	Species or species habitat may occur within area
<b>Mammals</b>		
<a href="#">Balaenoptera musculus</a> Blue Whale [36]	Endangered	Species or species habitat likely to occur within area
<a href="#">Dasyurus geoffroi</a> Chuditch, Western Quoll [330]	Vulnerable	Species or species habitat likely to occur within area

Name	Status	Type of Presence
<a href="#">Eubalaena australis</a> Southern Right Whale [40]	Endangered	Breeding known to occur within area
<a href="#">Megaptera novaeangliae</a> Humpback Whale [38]	Vulnerable	Species or species habitat known to occur within area
<a href="#">Neophoca cinerea</a> Australian Sea-lion, Australian Sea Lion [22]	Vulnerable	Species or species habitat may occur within area
<a href="#">Parantechinus apicalis</a> Dibbler [313]	Endangered	Species or species habitat likely to occur within area
<a href="#">Pseudocheirus occidentalis</a> Western Ringtail Possum, Ngwayir, Womp, Woder, Ngoor, Ngoolangit [25911]	Critically Endangered	Species or species habitat may occur within area
<b>Other</b>		
<a href="#">Westralunio carteri</a> Carter's Freshwater Mussel, Freshwater Mussel [86266]	Vulnerable	Species or species habitat likely to occur within area
<b>Plants</b>		
<a href="#">Calectasia cyanea</a> Blue Tinsel Lily [7669]	Critically Endangered	Species or species habitat likely to occur within area
<a href="#">Conostylis misera</a> Grass Conostylis [21320]	Endangered	Species or species habitat may occur within area
<a href="#">Drakaea micrantha</a> Dwarf Hammer-orchid [56755]	Vulnerable	Species or species habitat may occur within area
<a href="#">Isopogon uncinatus</a> Albany Cone Bush, Hook-leaf Isopogon [20871]	Endangered	Species or species habitat likely to occur within area
<a href="#">Kennedia glabrata</a> Northcliffe Kennedia [16452]	Vulnerable	Species or species habitat likely to occur within area
<a href="#">Verticordia apecta</a> Hay River Featherflower, Scruffy Verticordia [65545]	Critically Endangered	Species or species habitat may occur within area
<b>Reptiles</b>		
<a href="#">Caretta caretta</a> Loggerhead Turtle [1763]	Endangered	Foraging, feeding or related behaviour likely to occur within area
<a href="#">Chelonia mydas</a> Green Turtle [1765]	Vulnerable	Foraging, feeding or related behaviour likely to occur within area
<a href="#">Dermochelys coriacea</a> Leatherback Turtle, Leathery Turtle, Luth [1768]	Endangered	Foraging, feeding or related behaviour likely to occur within area
<b>Sharks</b>		
<a href="#">Carcharias taurus (west coast population)</a> Grey Nurse Shark (west coast population) [68752]	Vulnerable	Species or species habitat likely to occur within area
<a href="#">Carcharodon carcharias</a> White Shark, Great White Shark [64470]	Vulnerable	Species or species habitat known to occur within area

Name	Status	Type of Presence
<a href="#">Rhincodon typus</a> Whale Shark [66680]	Vulnerable	Species or species habitat may occur within area
<b>Listed Migratory Species</b>		<b>[ <a href="#">Resource Information</a> ]</b>
* Species is listed under a different scientific name on the EPBC Act - Threatened Species list.		
Name	Threatened	Type of Presence
<b>Migratory Marine Birds</b>		
<a href="#">Apus pacificus</a> Fork-tailed Swift [678]		Species or species habitat likely to occur within area
<a href="#">Ardenna carneipes</a> Flesh-footed Shearwater, Fleshy-footed Shearwater [82404]		Foraging, feeding or related behaviour likely to occur within area
<a href="#">Ardenna grisea</a> Sooty Shearwater [82651]		Species or species habitat may occur within area
<a href="#">Diomedea antipodensis</a> Antipodean Albatross [64458]	Vulnerable	Foraging, feeding or related behaviour likely to occur within area
<a href="#">Diomedea dabbenena</a> Tristan Albatross [66471]	Endangered	Species or species habitat may occur within area
<a href="#">Diomedea epomophora</a> Southern Royal Albatross [89221]	Vulnerable	Foraging, feeding or related behaviour likely to occur within area
<a href="#">Diomedea exulans</a> Wandering Albatross [89223]	Vulnerable	Foraging, feeding or related behaviour likely to occur within area
<a href="#">Diomedea sanfordi</a> Northern Royal Albatross [64456]	Endangered	Foraging, feeding or related behaviour likely to occur within area
<a href="#">Hydroprogne caspia</a> Caspian Tern [808]		Foraging, feeding or related behaviour known to occur within area
<a href="#">Macronectes giganteus</a> Southern Giant-Petrel, Southern Giant Petrel [1060]	Endangered	Species or species habitat may occur within area
<a href="#">Macronectes halli</a> Northern Giant Petrel [1061]	Vulnerable	Species or species habitat may occur within area
<a href="#">Onychoprion anaethetus</a> Bridled Tern [82845]		Foraging, feeding or related behaviour likely to occur within area
<a href="#">Phoebetria fusca</a> Sooty Albatross [1075]	Vulnerable	Species or species habitat likely to occur within area
<a href="#">Thalassarche cauta</a> Tasmanian Shy Albatross [89224]	Vulnerable*	Foraging, feeding or related behaviour likely to occur within area
<a href="#">Thalassarche impavida</a> Campbell Albatross, Campbell Black-browed Albatross [64459]	Vulnerable	Species or species habitat may occur within area
<a href="#">Thalassarche melanophris</a> Black-browed Albatross [66472]	Vulnerable	Species or species habitat may occur within area

Name	Threatened	Type of Presence
<a href="#">Thalassarche steadi</a> White-capped Albatross [64462]	Vulnerable*	Foraging, feeding or related behaviour likely to occur within area
<b>Migratory Marine Species</b>		
<a href="#">Balaena glacialis australis</a> Southern Right Whale [75529]	Endangered*	Breeding known to occur within area
<a href="#">Balaenoptera edeni</a> Bryde's Whale [35]		Species or species habitat may occur within area
<a href="#">Balaenoptera musculus</a> Blue Whale [36]	Endangered	Species or species habitat likely to occur within area
<a href="#">Caperea marginata</a> Pygmy Right Whale [39]		Species or species habitat may occur within area
<a href="#">Carcharodon carcharias</a> White Shark, Great White Shark [64470]	Vulnerable	Species or species habitat known to occur within area
<a href="#">Caretta caretta</a> Loggerhead Turtle [1763]	Endangered	Foraging, feeding or related behaviour likely to occur within area
<a href="#">Chelonia mydas</a> Green Turtle [1765]	Vulnerable	Foraging, feeding or related behaviour likely to occur within area
<a href="#">Dermochelys coriacea</a> Leatherback Turtle, Leathery Turtle, Luth [1768]	Endangered	Foraging, feeding or related behaviour likely to occur within area
<a href="#">Lagenorhynchus obscurus</a> Dusky Dolphin [43]		Species or species habitat may occur within area
<a href="#">Lamna nasus</a> Porbeagle, Mackerel Shark [83288]		Species or species habitat may occur within area
<a href="#">Manta alfredi</a> Reef Manta Ray, Coastal Manta Ray, Inshore Manta Ray, Prince Alfred's Ray, Resident Manta Ray [84994]		Species or species habitat may occur within area
<a href="#">Manta birostris</a> Giant Manta Ray, Chevron Manta Ray, Pacific Manta Ray, Pelagic Manta Ray, Oceanic Manta Ray [84995]		Species or species habitat may occur within area
<a href="#">Megaptera novaeangliae</a> Humpback Whale [38]	Vulnerable	Species or species habitat known to occur within area
<a href="#">Orcinus orca</a> Killer Whale, Orca [46]		Species or species habitat may occur within area
<a href="#">Rhincodon typus</a> Whale Shark [66680]	Vulnerable	Species or species habitat may occur within area
<b>Migratory Terrestrial Species</b>		
<a href="#">Motacilla cinerea</a> Grey Wagtail [642]		Species or species habitat may occur within area
<b>Migratory Wetlands Species</b>		
<a href="#">Actitis hypoleucos</a> Common Sandpiper [59309]		Species or species habitat known to occur

Name	Threatened	Type of Presence
<a href="#">Arenaria interpres</a> Ruddy Turnstone [872]		within area Roosting known to occur within area
<a href="#">Calidris acuminata</a> Sharp-tailed Sandpiper [874]		Roosting known to occur within area
<a href="#">Calidris alba</a> Sanderling [875]		Roosting known to occur within area
<a href="#">Calidris canutus</a> Red Knot, Knot [855]	Endangered	Species or species habitat known to occur within area
<a href="#">Calidris ferruginea</a> Curlew Sandpiper [856]	Critically Endangered	Species or species habitat known to occur within area
<a href="#">Calidris melanotos</a> Pectoral Sandpiper [858]		Species or species habitat known to occur within area
<a href="#">Calidris ruficollis</a> Red-necked Stint [860]		Roosting known to occur within area
<a href="#">Calidris subminuta</a> Long-toed Stint [861]		Roosting known to occur within area
<a href="#">Calidris tenuirostris</a> Great Knot [862]	Critically Endangered	Roosting known to occur within area
<a href="#">Charadrius leschenaultii</a> Greater Sand Plover, Large Sand Plover [877]	Vulnerable	Roosting known to occur within area
<a href="#">Charadrius mongolus</a> Lesser Sand Plover, Mongolian Plover [879]	Endangered	Roosting known to occur within area
<a href="#">Gallinago megala</a> Swinhoe's Snipe [864]		Roosting likely to occur within area
<a href="#">Gallinago stenura</a> Pin-tailed Snipe [841]		Roosting known to occur within area
<a href="#">Glareola maldivarum</a> Oriental Pratincole [840]		Roosting known to occur within area
<a href="#">Limosa lapponica</a> Bar-tailed Godwit [844]		Species or species habitat known to occur within area
<a href="#">Limosa limosa</a> Black-tailed Godwit [845]		Roosting known to occur within area
<a href="#">Numenius madagascariensis</a> Eastern Curlew, Far Eastern Curlew [847]	Critically Endangered	Species or species habitat likely to occur within area
<a href="#">Numenius minutus</a> Little Curlew, Little Whimbrel [848]		Roosting likely to occur within area
<a href="#">Pandion haliaetus</a> Osprey [952]		Species or species habitat known to occur within area
<a href="#">Pluvialis fulva</a> Pacific Golden Plover [25545]		Roosting known to occur within area
<a href="#">Pluvialis squatarola</a> Grey Plover [865]		Roosting known to occur within area
<a href="#">Tringa glareola</a> Wood Sandpiper [829]		Roosting known to occur



Name	Threatened	Type of Presence within area
<a href="#">Tringa nebularia</a> Common Greenshank, Greenshank [832]		Species or species habitat known to occur within area
<a href="#">Tringa stagnatilis</a> Marsh Sandpiper, Little Greenshank [833]		Roosting known to occur within area
<a href="#">Xenus cinereus</a> Terek Sandpiper [59300]		Roosting known to occur within area

## Other Matters Protected by the EPBC Act

### Listed Marine Species [\[ Resource Information \]](#)

\* Species is listed under a different scientific name on the EPBC Act - Threatened Species list.

Name	Threatened	Type of Presence
<b>Birds</b>		
<a href="#">Actitis hypoleucos</a> Common Sandpiper [59309]		Species or species habitat known to occur within area
<a href="#">Apus pacificus</a> Fork-tailed Swift [678]		Species or species habitat likely to occur within area
<a href="#">Ardea alba</a> Great Egret, White Egret [59541]		Species or species habitat known to occur within area
<a href="#">Ardea ibis</a> Cattle Egret [59542]		Species or species habitat may occur within area
<a href="#">Arenaria interpres</a> Ruddy Turnstone [872]		Roosting known to occur within area
<a href="#">Calidris acuminata</a> Sharp-tailed Sandpiper [874]		Roosting known to occur within area
<a href="#">Calidris alba</a> Sanderling [875]		Roosting known to occur within area
<a href="#">Calidris canutus</a> Red Knot, Knot [855]	Endangered	Species or species habitat known to occur within area
<a href="#">Calidris ferruginea</a> Curlew Sandpiper [856]	Critically Endangered	Species or species habitat known to occur within area
<a href="#">Calidris melanotos</a> Pectoral Sandpiper [858]		Species or species habitat known to occur within area
<a href="#">Calidris ruficollis</a> Red-necked Stint [860]		Roosting known to occur within area

Name	Threatened	Type of Presence
<a href="#">Calidris subminuta</a> Long-toed Stint [861]		Roosting known to occur within area
<a href="#">Calidris tenuirostris</a> Great Knot [862]	Critically Endangered	Roosting known to occur within area
<a href="#">Charadrius leschenaultii</a> Greater Sand Plover, Large Sand Plover [877]	Vulnerable	Roosting known to occur within area
<a href="#">Charadrius mongolus</a> Lesser Sand Plover, Mongolian Plover [879]	Endangered	Roosting known to occur within area
<a href="#">Charadrius ruficapillus</a> Red-capped Plover [881]		Roosting known to occur within area
<a href="#">Diomedea antipodensis</a> Antipodean Albatross [64458]	Vulnerable	Foraging, feeding or related behaviour likely to occur within area
<a href="#">Diomedea dabbenena</a> Tristan Albatross [66471]	Endangered	Species or species habitat may occur within area
<a href="#">Diomedea epomophora</a> Southern Royal Albatross [89221]	Vulnerable	Foraging, feeding or related behaviour likely to occur within area
<a href="#">Diomedea exulans</a> Wandering Albatross [89223]	Vulnerable	Foraging, feeding or related behaviour likely to occur within area
<a href="#">Diomedea sanfordi</a> Northern Royal Albatross [64456]	Endangered	Foraging, feeding or related behaviour likely to occur within area
<a href="#">Gallinago megala</a> Swinhoe's Snipe [864]		Roosting likely to occur within area
<a href="#">Gallinago stenura</a> Pin-tailed Snipe [841]		Roosting known to occur within area
<a href="#">Glareola maldivarum</a> Oriental Pratincole [840]		Roosting known to occur within area
<a href="#">Haliaeetus leucogaster</a> White-bellied Sea-Eagle [943]		Species or species habitat known to occur within area
<a href="#">Himantopus himantopus</a> Pied Stilt, Black-winged Stilt [870]		Roosting known to occur within area
<a href="#">Larus pacificus</a> Pacific Gull [811]		Foraging, feeding or related behaviour known to occur within area
<a href="#">Limosa lapponica</a> Bar-tailed Godwit [844]		Species or species habitat known to occur within area
<a href="#">Limosa limosa</a> Black-tailed Godwit [845]		Roosting known to occur within area
<a href="#">Macronectes giganteus</a> Southern Giant-Petrel, Southern Giant Petrel [1060]	Endangered	Species or species habitat may occur within area
<a href="#">Macronectes halli</a> Northern Giant Petrel [1061]	Vulnerable	Species or species habitat may occur within area
<a href="#">Merops ornatus</a> Rainbow Bee-eater [670]		Species or species habitat may occur within

Name	Threatened	Type of Presence area
<a href="#">Motacilla cinerea</a> Grey Wagtail [642]		Species or species habitat may occur within area
<a href="#">Numenius madagascariensis</a> Eastern Curlew, Far Eastern Curlew [847]	Critically Endangered	Species or species habitat likely to occur within area
<a href="#">Numenius minutus</a> Little Curlew, Little Whimbrel [848]		Roosting likely to occur within area
<a href="#">Pachyptila turtur</a> Fairy Prion [1066]		Species or species habitat likely to occur within area
<a href="#">Pandion haliaetus</a> Osprey [952]		Species or species habitat known to occur within area
<a href="#">Phoebetria fusca</a> Sooty Albatross [1075]	Vulnerable	Species or species habitat likely to occur within area
<a href="#">Pluvialis fulva</a> Pacific Golden Plover [25545]		Roosting known to occur within area
<a href="#">Pluvialis squatarola</a> Grey Plover [865]		Roosting known to occur within area
<a href="#">Puffinus assimilis</a> Little Shearwater [59363]		Foraging, feeding or related behaviour known to occur within area
<a href="#">Puffinus carneipes</a> Flesh-footed Shearwater, Fleshy-footed Shearwater [1043]		Foraging, feeding or related behaviour likely to occur within area
<a href="#">Puffinus griseus</a> Sooty Shearwater [1024]		Species or species habitat may occur within area
<a href="#">Recurvirostra novaehollandiae</a> Red-necked Avocet [871]		Roosting known to occur within area
<a href="#">Sterna anaethetus</a> Bridled Tern [814]		Foraging, feeding or related behaviour likely to occur within area
<a href="#">Sterna caspia</a> Caspian Tern [59467]		Foraging, feeding or related behaviour known to occur within area
<a href="#">Thalassarche cauta</a> Tasmanian Shy Albatross [89224]	Vulnerable*	Foraging, feeding or related behaviour likely to occur within area
<a href="#">Thalassarche impavida</a> Campbell Albatross, Campbell Black-browed Albatross [64459]	Vulnerable	Species or species habitat may occur within area
<a href="#">Thalassarche melanophris</a> Black-browed Albatross [66472]	Vulnerable	Species or species habitat may occur within area
<a href="#">Thalassarche steadi</a> White-capped Albatross [64462]	Vulnerable*	Foraging, feeding or related behaviour likely to occur within area
<a href="#">Thinornis rubricollis</a> Hooded Plover [59510]		Species or species habitat likely to occur within area

Name	Threatened	Type of Presence
<a href="#">Tringa glareola</a> Wood Sandpiper [829]		Roosting known to occur within area
<a href="#">Tringa nebularia</a> Common Greenshank, Greenshank [832]		Species or species habitat known to occur within area
<a href="#">Tringa stagnatilis</a> Marsh Sandpiper, Little Greenshank [833]		Roosting known to occur within area
<a href="#">Xenus cinereus</a> Terek Sandpiper [59300]		Roosting known to occur within area
<b>Fish</b>		
<a href="#">Acentronura australe</a> Southern Pygmy Pipehorse [66185]		Species or species habitat may occur within area
<a href="#">Campichthys galei</a> Gale's Pipefish [66191]		Species or species habitat may occur within area
<a href="#">Heraldia nocturna</a> Upside-down Pipefish, Eastern Upside-down Pipefish, Eastern Upside-down Pipefish [66227]		Species or species habitat may occur within area
<a href="#">Hippocampus breviceps</a> Short-head Seahorse, Short-snouted Seahorse [66235]		Species or species habitat may occur within area
<a href="#">Histiogamphelus cristatus</a> Rhino Pipefish, Macleay's Crested Pipefish, Ring-back Pipefish [66243]		Species or species habitat may occur within area
<a href="#">Leptoichthys fistularius</a> Brushtail Pipefish [66248]		Species or species habitat may occur within area
<a href="#">Lissocampus caudalis</a> Australian Smooth Pipefish, Smooth Pipefish [66249]		Species or species habitat may occur within area
<a href="#">Lissocampus runa</a> Javelin Pipefish [66251]		Species or species habitat may occur within area
<a href="#">Maroubra perserrata</a> Sawtooth Pipefish [66252]		Species or species habitat may occur within area
<a href="#">Nannocampus subosseus</a> Bonyhead Pipefish, Bony-headed Pipefish [66264]		Species or species habitat may occur within area
<a href="#">Notiocampus ruber</a> Red Pipefish [66265]		Species or species habitat may occur within area
<a href="#">Phycodurus eques</a> Leafy Seadragon [66267]		Species or species habitat may occur within area
<a href="#">Phyllopteryx taeniolatus</a> Common Seadragon, Weedy Seadragon [66268]		Species or species habitat may occur within area
<a href="#">Pugnaso curtirostris</a> Pugnose Pipefish, Pug-nosed Pipefish [66269]		Species or species habitat may occur within area
<a href="#">Solegnathus lettiensis</a> Gunther's Pipehorse, Indonesian Pipefish [66273]		Species or species habitat may occur within

Name	Threatened	Type of Presence area
<a href="#">Stigmatopora argus</a> Spotted Pipefish, Gulf Pipefish, Peacock Pipefish [66276]		Species or species habitat may occur within area
<a href="#">Stigmatopora nigra</a> Widebody Pipefish, Wide-bodied Pipefish, Black Pipefish [66277]		Species or species habitat may occur within area
<a href="#">Urocampus carinirostris</a> Hairy Pipefish [66282]		Species or species habitat may occur within area
<a href="#">Vanacampus margaritifer</a> Mother-of-pearl Pipefish [66283]		Species or species habitat may occur within area
<a href="#">Vanacampus phillipi</a> Port Phillip Pipefish [66284]		Species or species habitat may occur within area
<a href="#">Vanacampus poecilolaemus</a> Longsnout Pipefish, Australian Long-snout Pipefish, Long-snouted Pipefish [66285]		Species or species habitat may occur within area
<b>Mammals</b>		
<a href="#">Arctocephalus forsteri</a> Long-nosed Fur-seal, New Zealand Fur-seal [20]		Species or species habitat may occur within area
<a href="#">Neophoca cinerea</a> Australian Sea-lion, Australian Sea Lion [22]	Vulnerable	Species or species habitat may occur within area
<b>Reptiles</b>		
<a href="#">Caretta caretta</a> Loggerhead Turtle [1763]	Endangered	Foraging, feeding or related behaviour likely to occur within area
<a href="#">Chelonia mydas</a> Green Turtle [1765]	Vulnerable	Foraging, feeding or related behaviour likely to occur within area
<a href="#">Dermochelys coriacea</a> Leatherback Turtle, Leathery Turtle, Luth [1768]	Endangered	Foraging, feeding or related behaviour likely to occur within area
<b>Whales and other Cetaceans</b>		
		<a href="#">[ Resource Information ]</a>
Name	Status	Type of Presence
<b>Mammals</b>		
<a href="#">Balaenoptera acutorostrata</a> Minke Whale [33]		Species or species habitat may occur within area
<a href="#">Balaenoptera edeni</a> Bryde's Whale [35]		Species or species habitat may occur within area
<a href="#">Balaenoptera musculus</a> Blue Whale [36]	Endangered	Species or species habitat likely to occur within area
<a href="#">Caperea marginata</a> Pygmy Right Whale [39]		Species or species habitat may occur within area
<a href="#">Delphinus delphis</a> Common Dophin, Short-beaked Common Dolphin [60]		Species or species habitat may occur within area

Name	Status	Type of Presence
<a href="#">Eubalaena australis</a> Southern Right Whale [40]	Endangered	Breeding known to occur within area
<a href="#">Grampus griseus</a> Risso's Dolphin, Grampus [64]		Species or species habitat may occur within area
<a href="#">Lagenorhynchus obscurus</a> Dusky Dolphin [43]		Species or species habitat may occur within area
<a href="#">Megaptera novaeangliae</a> Humpback Whale [38]	Vulnerable	Species or species habitat known to occur within area
<a href="#">Orcinus orca</a> Killer Whale, Orca [46]		Species or species habitat may occur within area
<a href="#">Tursiops aduncus</a> Indian Ocean Bottlenose Dolphin, Spotted Bottlenose Dolphin [68418]		Species or species habitat likely to occur within area
<a href="#">Tursiops truncatus s. str.</a> Bottlenose Dolphin [68417]		Species or species habitat may occur within area

## Extra Information

### Invasive Species [\[ Resource Information \]](#)

Weeds reported here are the 20 species of national significance (WoNS), along with other introduced plants that are considered by the States and Territories to pose a particularly significant threat to biodiversity. The following feral animals are reported: Goat, Red Fox, Cat, Rabbit, Pig, Water Buffalo and Cane Toad. Maps from Landscape Health Project, National Land and Water Resources Audit, 2001.

Name	Status	Type of Presence
<b>Birds</b>		
Anas platyrhynchos Mallard [974]		Species or species habitat likely to occur within area
Columba livia Rock Pigeon, Rock Dove, Domestic Pigeon [803]		Species or species habitat likely to occur within area
Streptopelia senegalensis Laughing Turtle-dove, Laughing Dove [781]		Species or species habitat likely to occur within area
Sturnus vulgaris Common Starling [389]		Species or species habitat likely to occur within area
<b>Mammals</b>		
Canis lupus familiaris Domestic Dog [82654]		Species or species habitat likely to occur within area
Felis catus Cat, House Cat, Domestic Cat [19]		Species or species habitat likely to occur within area
Mus musculus House Mouse [120]		Species or species habitat likely to occur within area

Name	Status	Type of Presence
Oryctolagus cuniculus Rabbit, European Rabbit [128]		Species or species habitat likely to occur within area
Rattus rattus Black Rat, Ship Rat [84]		Species or species habitat likely to occur within area
Sus scrofa Pig [6]		Species or species habitat likely to occur within area
Vulpes vulpes Red Fox, Fox [18]		Species or species habitat likely to occur within area
<b>Plants</b>		
Anredera cordifolia Madeira Vine, Jalap, Lamb's-tail, Mignonette Vine, Anredera, Gulf Madeiravine, Heartleaf Madeiravine, Potato Vine [2643]		Species or species habitat likely to occur within area
Asparagus asparagoides Bridal Creeper, Bridal Veil Creeper, Smilax, Florist's Smilax, Smilax Asparagus [22473]		Species or species habitat likely to occur within area
Cenchrus ciliaris Buffel-grass, Black Buffel-grass [20213]		Species or species habitat may occur within area
Genista sp. X Genista monspessulana Broom [67538]		Species or species habitat may occur within area
Lantana camara Lantana, Common Lantana, Kamara Lantana, Large-leaf Lantana, Pink Flowered Lantana, Red Flowered Lantana, Red-Flowered Sage, White Sage, Wild Sage [10892]		Species or species habitat likely to occur within area
Lycium ferocissimum African Boxthorn, Boxthorn [19235]		Species or species habitat likely to occur within area
Pinus radiata Radiata Pine Monterey Pine, Insignis Pine, Wilding Pine [20780]		Species or species habitat may occur within area
Rubus fruticosus aggregate Blackberry, European Blackberry [68406]		Species or species habitat likely to occur within area
Ulex europaeus Gorse, Furze [7693]		Species or species habitat likely to occur within area

# Caveat

The information presented in this report has been provided by a range of data sources as acknowledged at the end of the report.

This report is designed to assist in identifying the locations of places which may be relevant in determining obligations under the Environment Protection and Biodiversity Conservation Act 1999. It holds mapped locations of World and National Heritage properties, Wetlands of International and National Importance, Commonwealth and State/Territory reserves, listed threatened, migratory and marine species and listed threatened ecological communities. Mapping of Commonwealth land is not complete at this stage. Maps have been collated from a range of sources at various resolutions.

Not all species listed under the EPBC Act have been mapped (see below) and therefore a report is a general guide only. Where available data supports mapping, the type of presence that can be determined from the data is indicated in general terms. People using this information in making a referral may need to consider the qualifications below and may need to seek and consider other information sources.

For threatened ecological communities where the distribution is well known, maps are derived from recovery plans, State vegetation maps, remote sensing imagery and other sources. Where threatened ecological community distributions are less well known, existing vegetation maps and point location data are used to produce indicative distribution maps.

Threatened, migratory and marine species distributions have been derived through a variety of methods. Where distributions are well known and if time permits, maps are derived using either thematic spatial data (i.e. vegetation, soils, geology, elevation, aspect, terrain, etc) together with point locations and described habitat; or environmental modelling (MAXENT or BIOCLIM habitat modelling) using point locations and environmental data layers.

Where very little information is available for species or large number of maps are required in a short time-frame, maps are derived either from 0.04 or 0.02 decimal degree cells; by an automated process using polygon capture techniques (static two kilometre grid cells, alpha-hull and convex hull); or captured manually or by using topographic features (national park boundaries, islands, etc). In the early stages of the distribution mapping process (1999-early 2000s) distributions were defined by degree blocks, 100K or 250K map sheets to rapidly create distribution maps. More reliable distribution mapping methods are used to update these distributions as time permits.

Only selected species covered by the following provisions of the EPBC Act have been mapped:

- migratory and
- marine

The following species and ecological communities have not been mapped and do not appear in reports produced from this database:

- threatened species listed as extinct or considered as vagrants
- some species and ecological communities that have only recently been listed
- some terrestrial species that overfly the Commonwealth marine area
- migratory species that are very widespread, vagrant, or only occur in small numbers

The following groups have been mapped, but may not cover the complete distribution of the species:

- non-threatened seabirds which have only been mapped for recorded breeding sites
- seals which have only been mapped for breeding sites near the Australian continent

Such breeding sites may be important for the protection of the Commonwealth Marine environment.

# Coordinates

-35.03017 117.44031,-35.03017 117.50777,-35.05645 117.50777,-35.05645 117.44031,-35.03017 117.44031



# Acknowledgements

This database has been compiled from a range of data sources. The department acknowledges the following custodians who have contributed valuable data and advice:

- [-Office of Environment and Heritage, New South Wales](#)
- [-Department of Environment and Primary Industries, Victoria](#)
- [-Department of Primary Industries, Parks, Water and Environment, Tasmania](#)
- [-Department of Environment, Water and Natural Resources, South Australia](#)
- [-Department of Land and Resource Management, Northern Territory](#)
- [-Department of Environmental and Heritage Protection, Queensland](#)
- [-Department of Parks and Wildlife, Western Australia](#)
- [-Environment and Planning Directorate, ACT](#)
- [-Birdlife Australia](#)
- [-Australian Bird and Bat Banding Scheme](#)
- [-Australian National Wildlife Collection](#)
- [-Natural history museums of Australia](#)
- [-Museum Victoria](#)
- [-Australian Museum](#)
- [-South Australian Museum](#)
- [-Queensland Museum](#)
- [-Online Zoological Collections of Australian Museums](#)
- [-Queensland Herbarium](#)
- [-National Herbarium of NSW](#)
- [-Royal Botanic Gardens and National Herbarium of Victoria](#)
- [-Tasmanian Herbarium](#)
- [-State Herbarium of South Australia](#)
- [-Northern Territory Herbarium](#)
- [-Western Australian Herbarium](#)
- [-Australian National Herbarium, Canberra](#)
- [-University of New England](#)
- [-Ocean Biogeographic Information System](#)
- [-Australian Government, Department of Defence Forestry Corporation, NSW](#)
- [-Geoscience Australia](#)
- [-CSIRO](#)
- [-Australian Tropical Herbarium, Cairns](#)
- [-eBird Australia](#)
- [-Australian Government – Australian Antarctic Data Centre](#)
- [-Museum and Art Gallery of the Northern Territory](#)
- [-Australian Government National Environmental Science Program](#)
- [-Australian Institute of Marine Science](#)
- [-Reef Life Survey Australia](#)
- [-American Museum of Natural History](#)
- [-Queen Victoria Museum and Art Gallery, Inveresk, Tasmania](#)
- [-Tasmanian Museum and Art Gallery, Hobart, Tasmania](#)
- [-Other groups and individuals](#)

The Department is extremely grateful to the many organisations and individuals who provided expert advice and information on numerous draft distributions.

Please feel free to provide feedback via the [Contact Us](#) page.