

# CPS 8392/3 - Map b

117°27.000'E

117°27.300'E

117°27.600'E

117°27.900'E

35°1.800'S

35°2.100'S

35°2.400'S

35°2.700'S

35°1.800'S

35°2.100'S

35°2.400'S

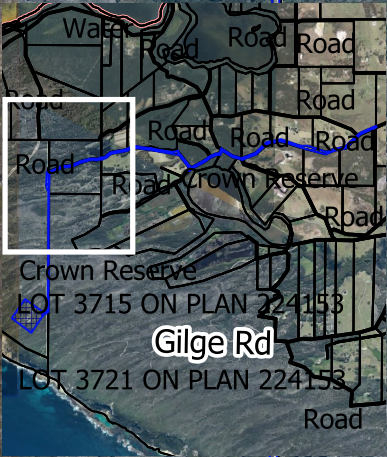
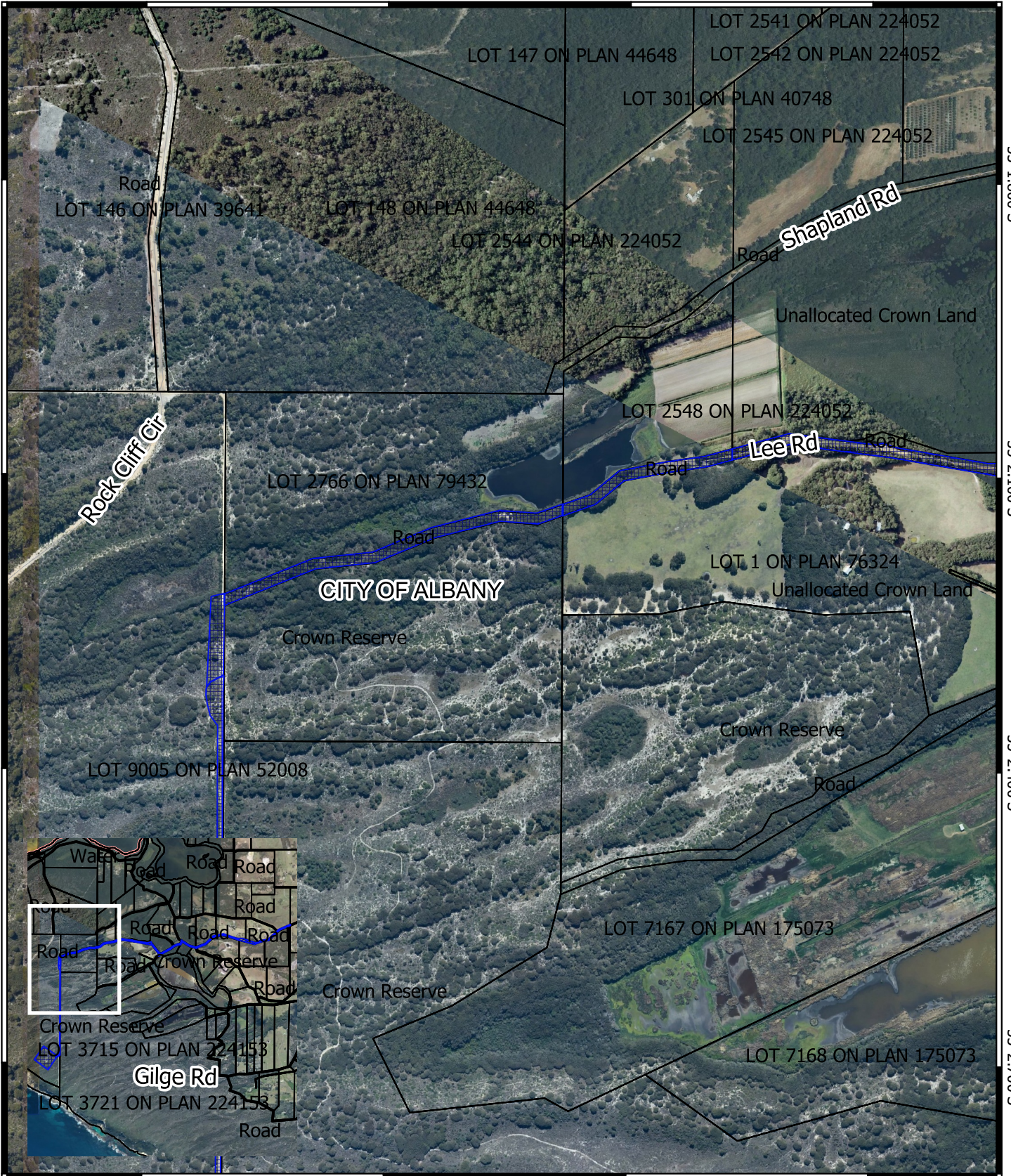
35°2.700'S

117°27.000'E


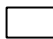

117°27.300'E

117°27.600'E

117°27.900'E



## Legend

-  CPS areas applied to clear
-  Land TenureLGATE - 226
-  Local Government Authorities

Road Centrelines  
 Local Rd - Other

Image



1:10000

0 100 200 300 400 m



MGA 94  
 Geocentric Datum of Australia 1994



**GOVERNMENT OF  
 WESTERN AUSTRALIA**