

CPS 8392/5 - Context Map

117°27'36"E

117°28'48"E

35°11'24"S

35°11'24"S

35°2'24"S

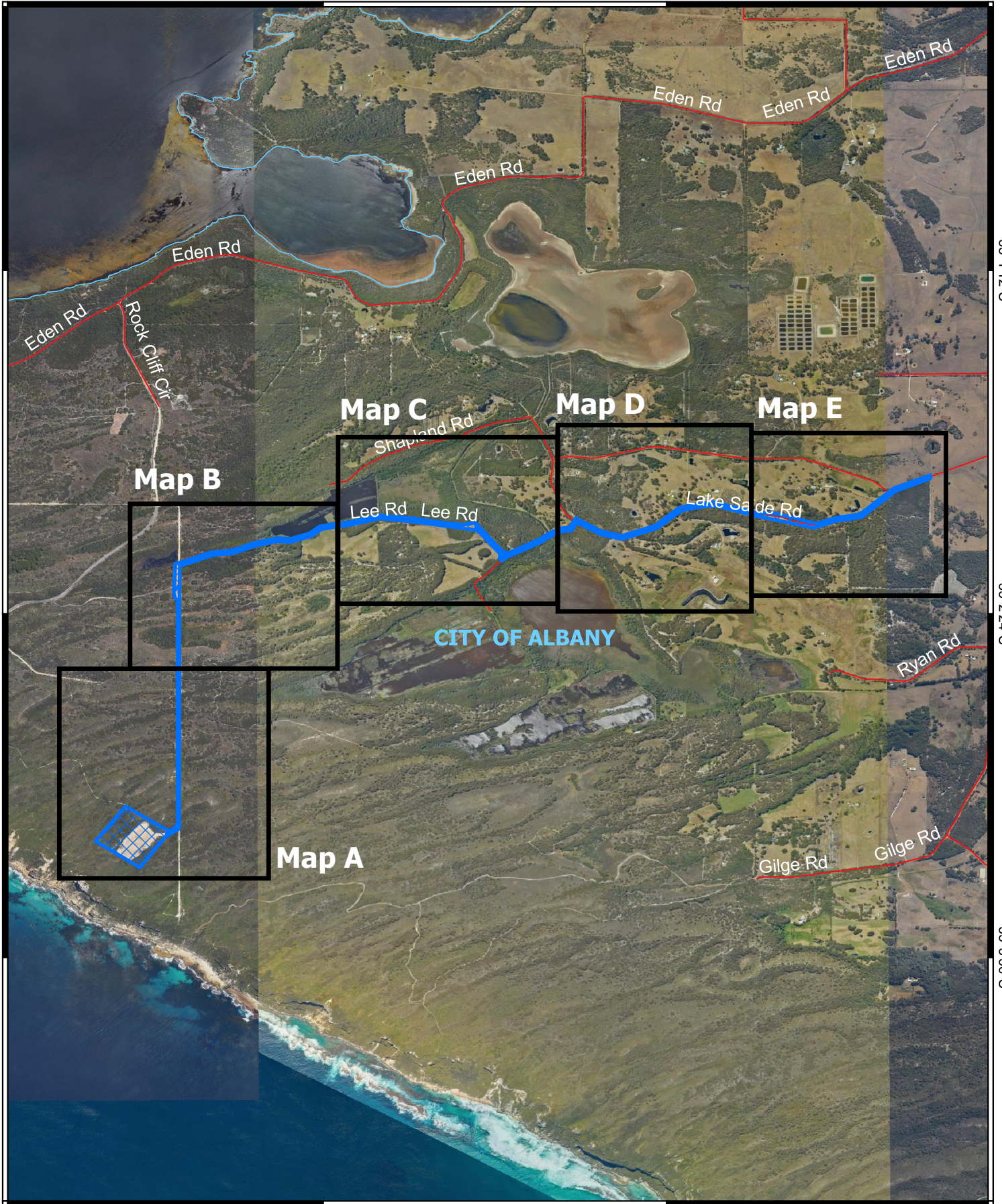
35°2'24"S

35°3'36"S



35°3'36"S

117°27'36"E

117°28'48"E



Legend

-  CPS areas applied to clear
-  Local Government Authorities

Roads

-  Minor



0 0.2 0.4 0.6 0.8 1 km



1:20,000

Projection: GDA2020



GOVERNMENT OF
WESTERN AUSTRALIA