

CPS 8392/5 - Map B

117°27'7"E 117°27'14"E 117°27'22"E 117°27'29"E 117°27'36"E

35°1'55"S

35°2'2"S

35°2'10"S

35°2'17"S

35°2'24"S

35°2'31"S

35°1'55"S

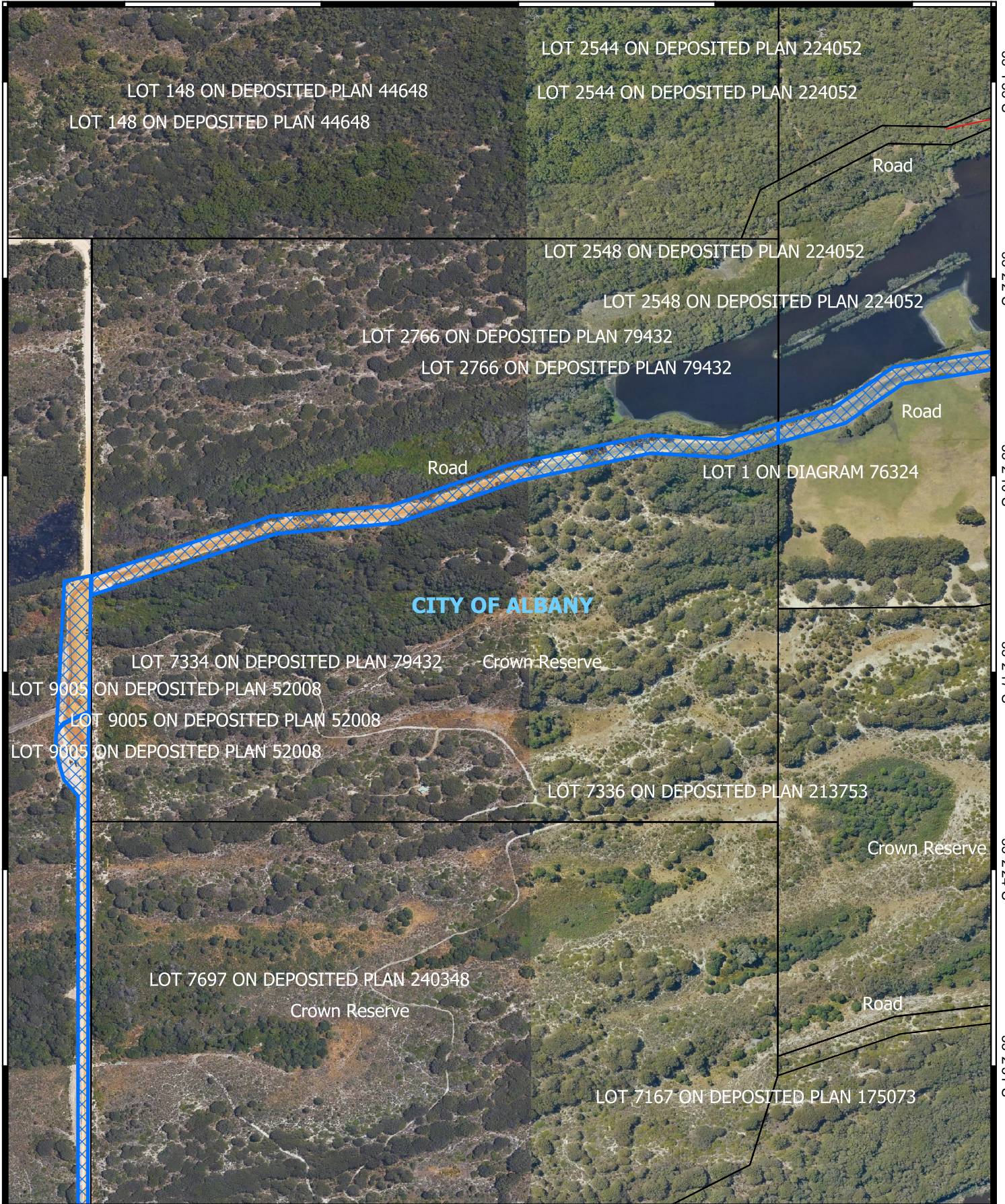
35°2'2"S

35°2'10"S

35°2'17"S

35°2'24"S

35°2'31"S



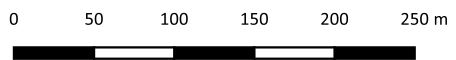
117°27'7"E 117°27'14"E 117°27'22"E 117°27'29"E 117°27'36"E

Legend

- CPS areas applied to clear
- Land Tenure
- Local Government Authorities

Roads

- Minor



1:3,500

Projection: GDA2020



GOVERNMENT OF WESTERN AUSTRALIA