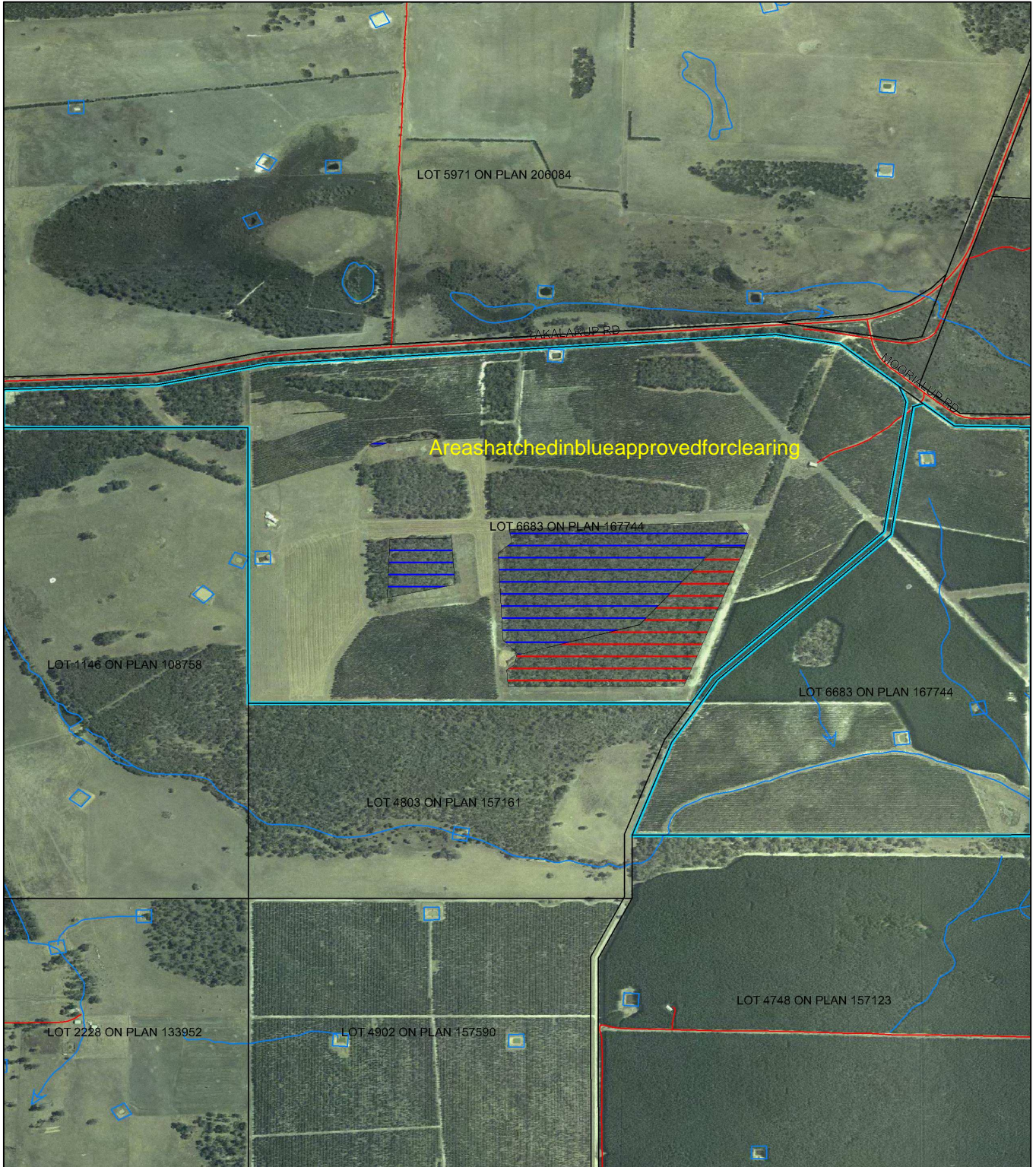


PlanCPS84/1



LEGEND

✓ Road Centrelines - DLI
1/5/04

▨ Areas Applied to Clear

□ Cadastre for labelling - DLI
1/03/04

▣ Land parcels related to
instrument

▨ Areas Subject to Conditions

✓ Hydrography, linear - DOE
1/2/04

Clearing Instruments
(cont)

Albany 1.4m Orthomosaic -
DLI March 03



Scale 1:17000

(Approximate when reproduced at A4)

Geocentric Datum Australia 1994

Note: the data in this map have not been
projected. This may result in geometric
distortion or measurement inaccuracies.

.....Date.....
Paul Rosair, Director of Regional Services, Department of Environment

Officer with delegated authority under Section 200 of
the Environmental Protection Act 1986

Information derived from this map should be
confirmed with the data custodian acknowledged
by the agency acronym in the legend.



WACrown Copyright 2002