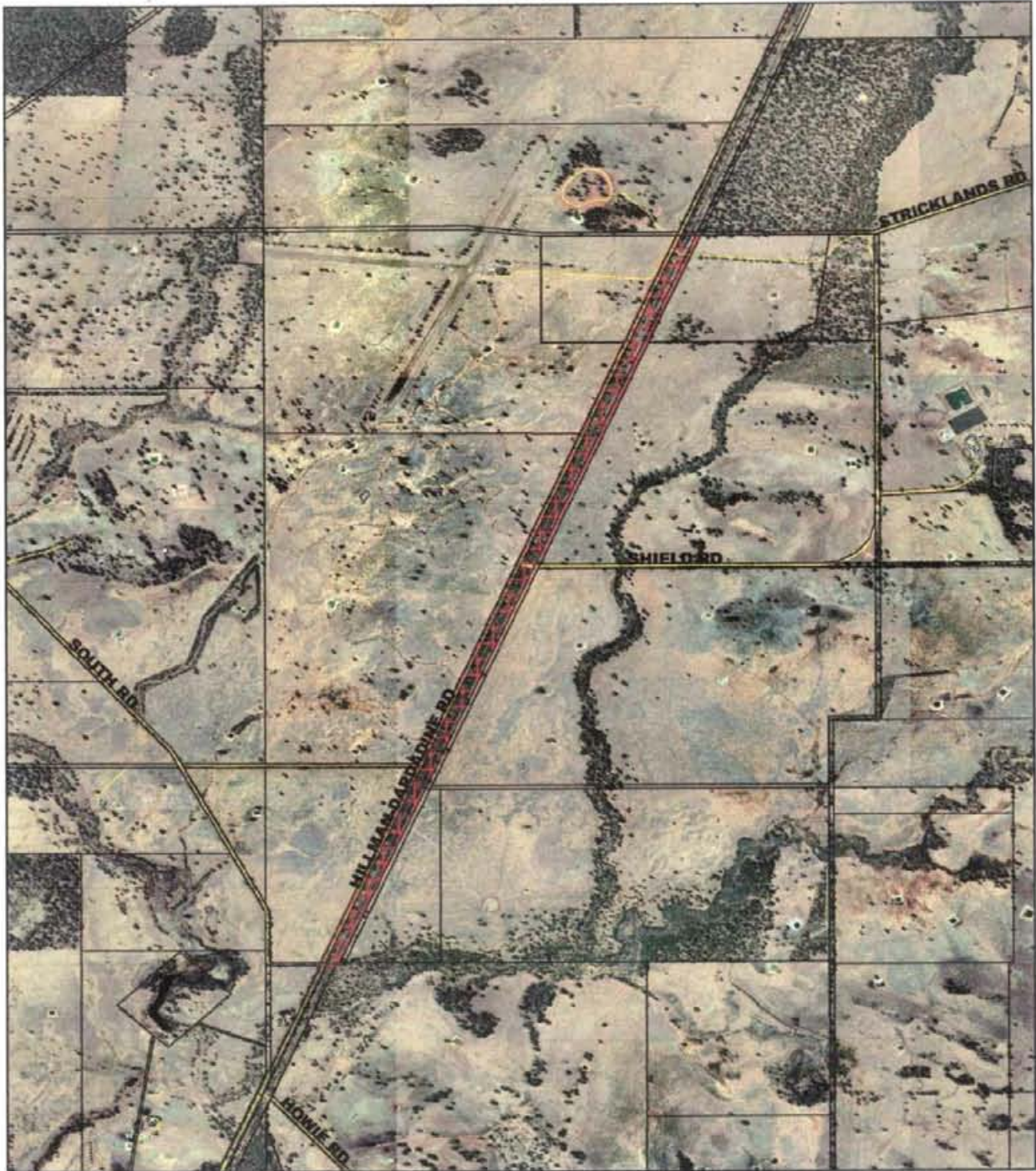
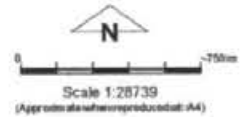


CPS 842/1a



LEGEND

- | | | |
|-----------------------------|---------------------------------|--------------------------------------|
| Clearing Instruments | | □ Cadastre - DLI 1/12/05 |
| ■ Areas Applied to Clear | ■ Areas Subject to Conditions | ■ Towns - DLI 8/04 |
| ■ Areas Approved to Clear | ■ Road Centrelines - DLI 1/3/04 | ■ Darken 1m Orthomosaic - DOLA 03/01 |



Geocentric Datum Australia 1994

~~Note: The data in this map have not been protected. This may result in geometric distortion in measurement in space files.~~

Paul Rosair Date 16.6.06
 Paul Rosair
 Officer with delegated authority under Section 20 of the Environmental Protection Act 1986

Information derived from this map should be confirmed with the data custodian acknowledged by the agency acronym in the legend.

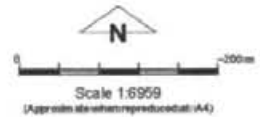


CPS 842/1b



LEGEND

- | | |
|---------------------------------|--------------------------------------|
| Clearing Instruments | □ Cadastre - DLJ 1/12/85 |
| ■ Areas Subject to Conditions | ■ Towns - DLJ 8/04 |
| ■ Areas Approved to Clear | ■ Carpan 1m Orthomosaic - DOLA 03/01 |
| ■ Road Centrelines - DLJ 1/5/94 | |



Geocentric Datum Australia 1994

Note: This data in this map have not been projected. It may result in geometric distortion or measurement inaccuracies.

Paul Rosier

Officer with delegated authority under Section 20 of the Environmental Protection Act 1986

Information derived from this map should be confirmed with the data to which it is acknowledged by the agency acronym in the legend.

Date 16.6.06



© 2006 Environmental Protection Authority