

CPS 8449/1 - Context Map

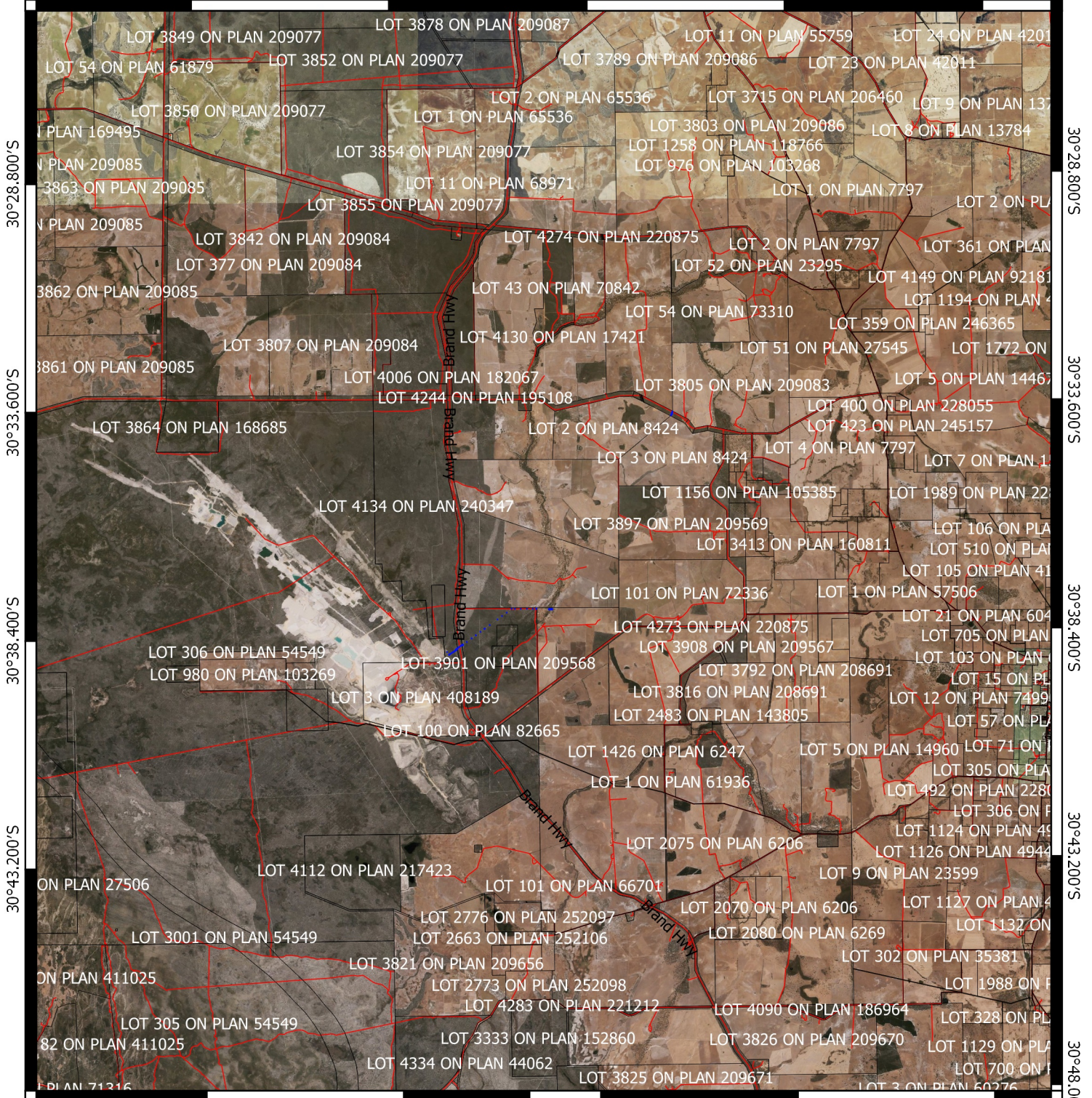
115°21.600'E

115°26.400'E

115°31.200'E

115°36.000'E

115°40.800'E



30°28.800'S

30°33.600'S

30°38.400'S

30°43.200'S

30°28.800'S

30°33.600'S

30°38.400'S

30°43.200'S

30°48.000'S

115°21.600'E

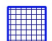
115°26.400'E

115°31.200'E


115°36.000'E


115°40.800'E

Legend

 CPS areas applied to clear base layers

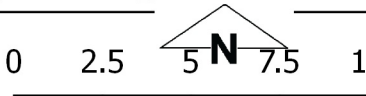
 Cadastre

 Road Centrelines

 Local Government Authorities

Image

0 2.5 5 7.5 10 km



MGA 94
Geocentric Datum of Australia 1994

Officer with delegated authority under Section 20
of the Environmental Protection Act 1986



GOVERNMENT OF
WESTERN AUSTRALIA