

CPS 8449/1 - Map(b)

115°27.660'E

115°27.840'E

115°28.020'E

115°28.200'E

115°28.380'E

30°38.160'S

30°38.340'S

30°38.520'S

30°38.700'S

30°38.880'S

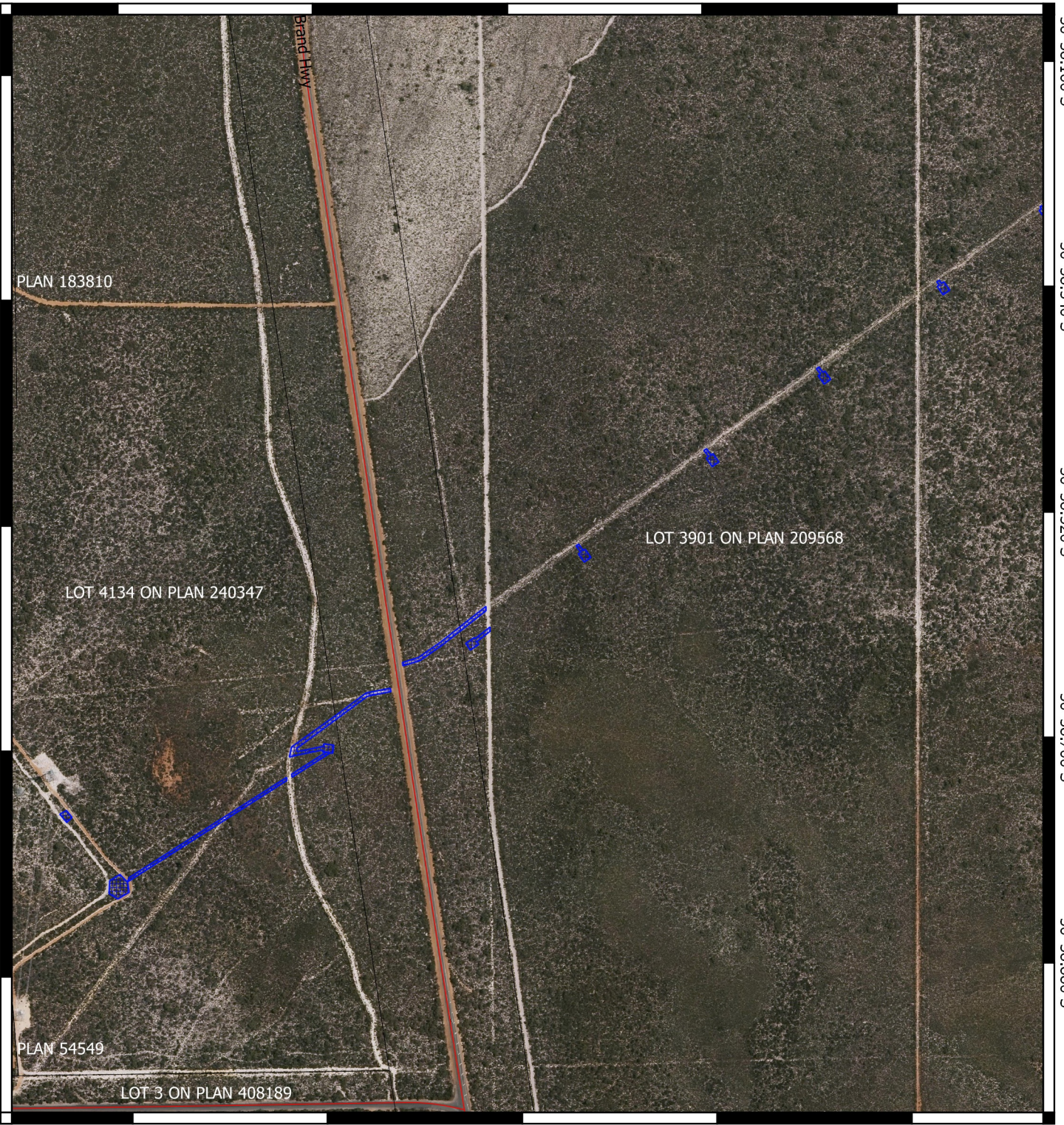
30°38.160'S

30°38.340'S

30°38.520'S

30°38.700'S

30°38.880'S



115°27.660'E


115°27.840'E

115°28.020'E

115°28.200'E


115°28.380'E

Legend

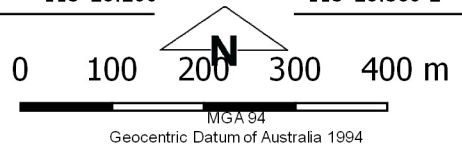
 CPS areas applied to clear base layers

 Cadastre

 Road Centrelines

 Local Government Authorities

Image



Officer with delegated authority under Section 20 of the Environmental Protection Act 1986



GOVERNMENT OF WESTERN AUSTRALIA