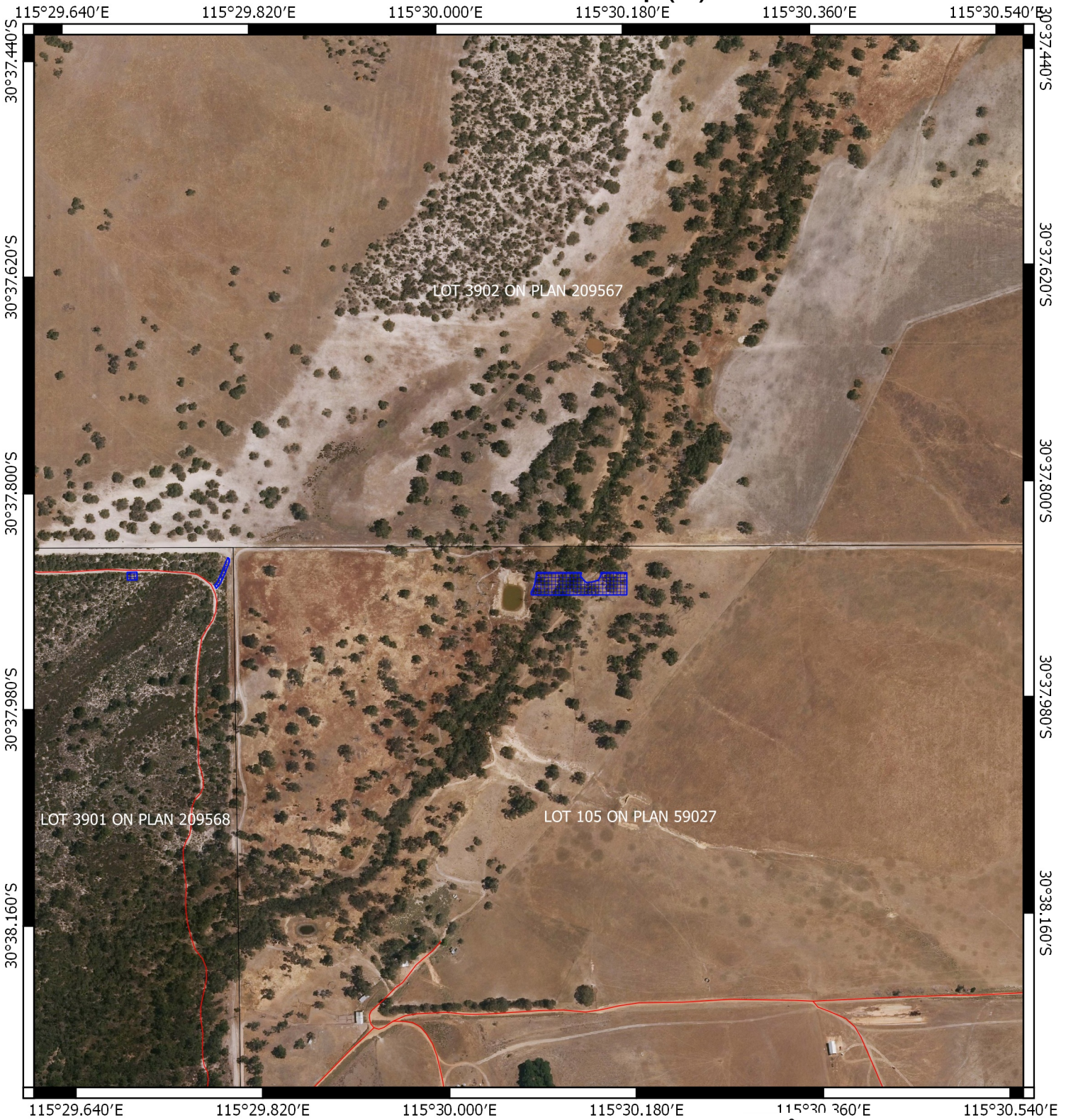
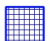





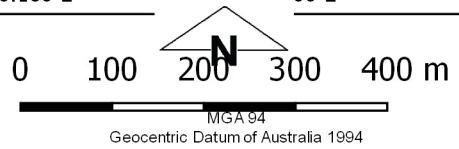
# CPS 8449/1 - Map(e)



## Legend

-  CPS areas applied to clear base layers
-  Cadastre
-  Road Centrelines
-  Local Government Authorities

Image



Officer with delegated authority under Section 20  
of the Environmental Protection Act 1986



**GOVERNMENT OF  
WESTERN AUSTRALIA**