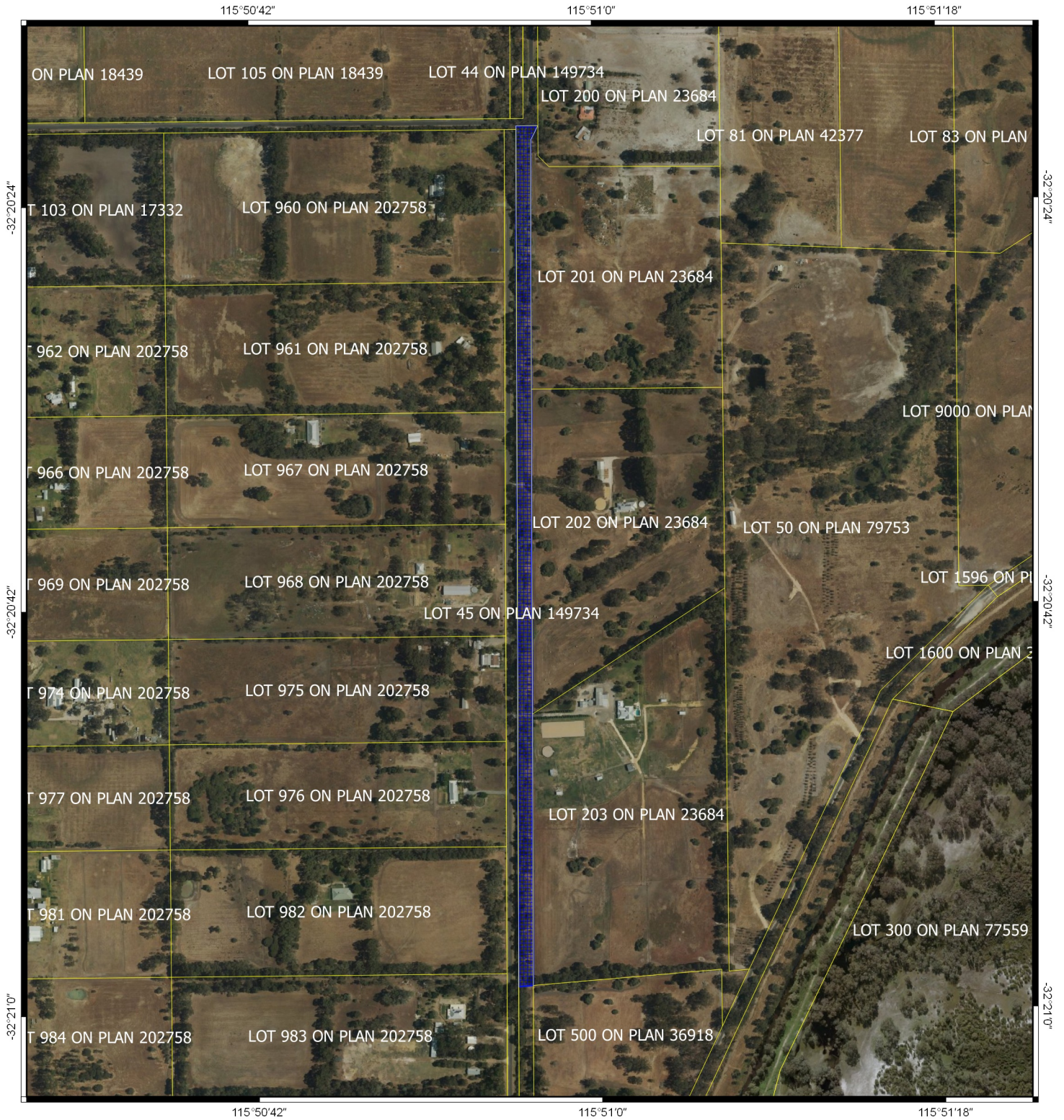




CPS 8461/1 - Map (c)



Legend

-  CPS areas applied to clear
-  Cadastre
- Image



0 100 200 300 400 m



MGA 94
Geocentric Datum of Australia 1994

Officer with delegated authority under Section 20
of the Environmental Protection Act 1986



**GOVERNMENT OF
WESTERN AUSTRALIA**