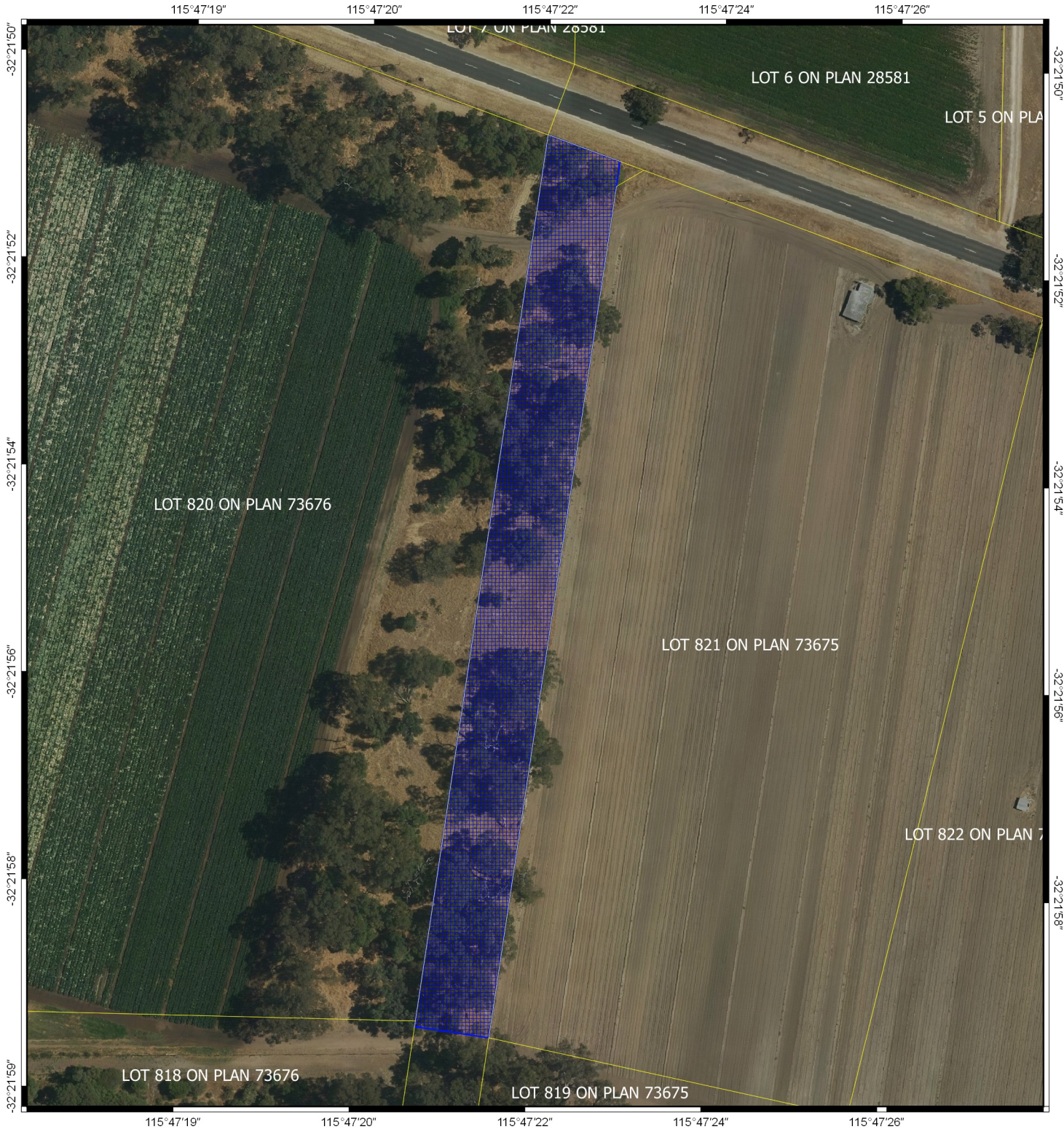
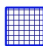



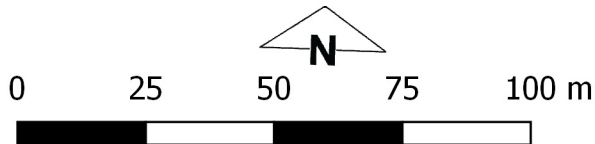
# CPS 8461/1 - Map (e)



**Legend**

-  CPS areas applied to clear
-  Cadastre

Image



MGA 94  
Geocentric Datum of Australia 1994

Officer with delegated authority under Section 20  
of the Environmental Protection Act 1986



**GOVERNMENT OF  
WESTERN AUSTRALIA**