

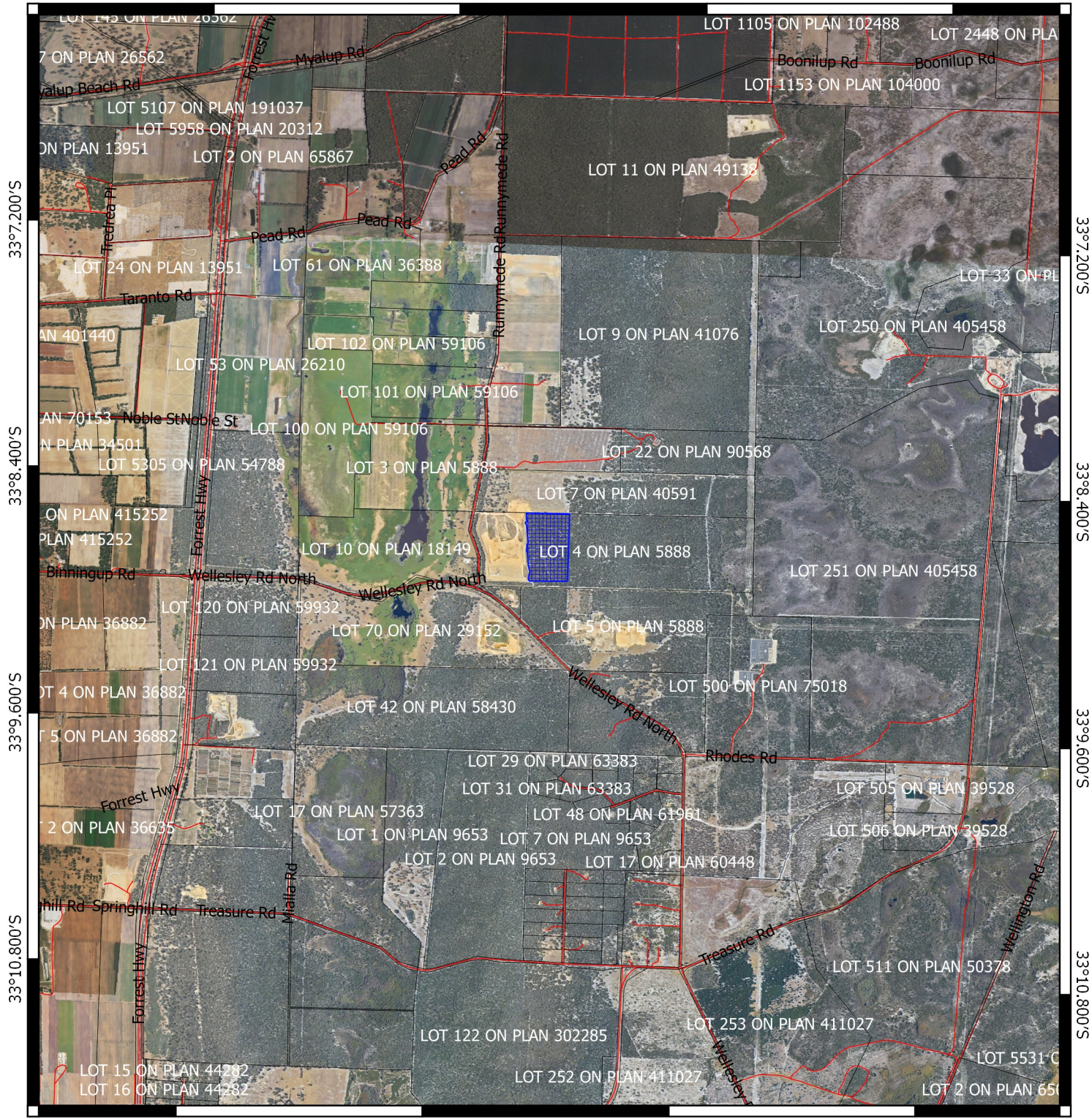
# CPS 8479/1 - Context Map

115°43.200'E

115°44.400'E

115°45.600'E

115°46.800'E



115°43.200'E

115°44.400'E

115°45.600'E

115°46.800'E

33°7.200'S

33°8.400'S

33°9.600'S

33°10.800'S

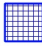



33°7.200'S

33°8.400'S

33°9.600'S

33°10.800'S

## Legend

-  CPS areas applied to clear base layers
-  Cadastre
-  Road Centrelines
-  Local Government Authorities

Image

0 750 1500 N 2250 3000 m



MGA 94  
Geocentric Datum of Australia 1994

Officer delegated under Section 20 of the Environmental Protection Act 1986



GOVERNMENT OF  
WESTERN AUSTRALIA