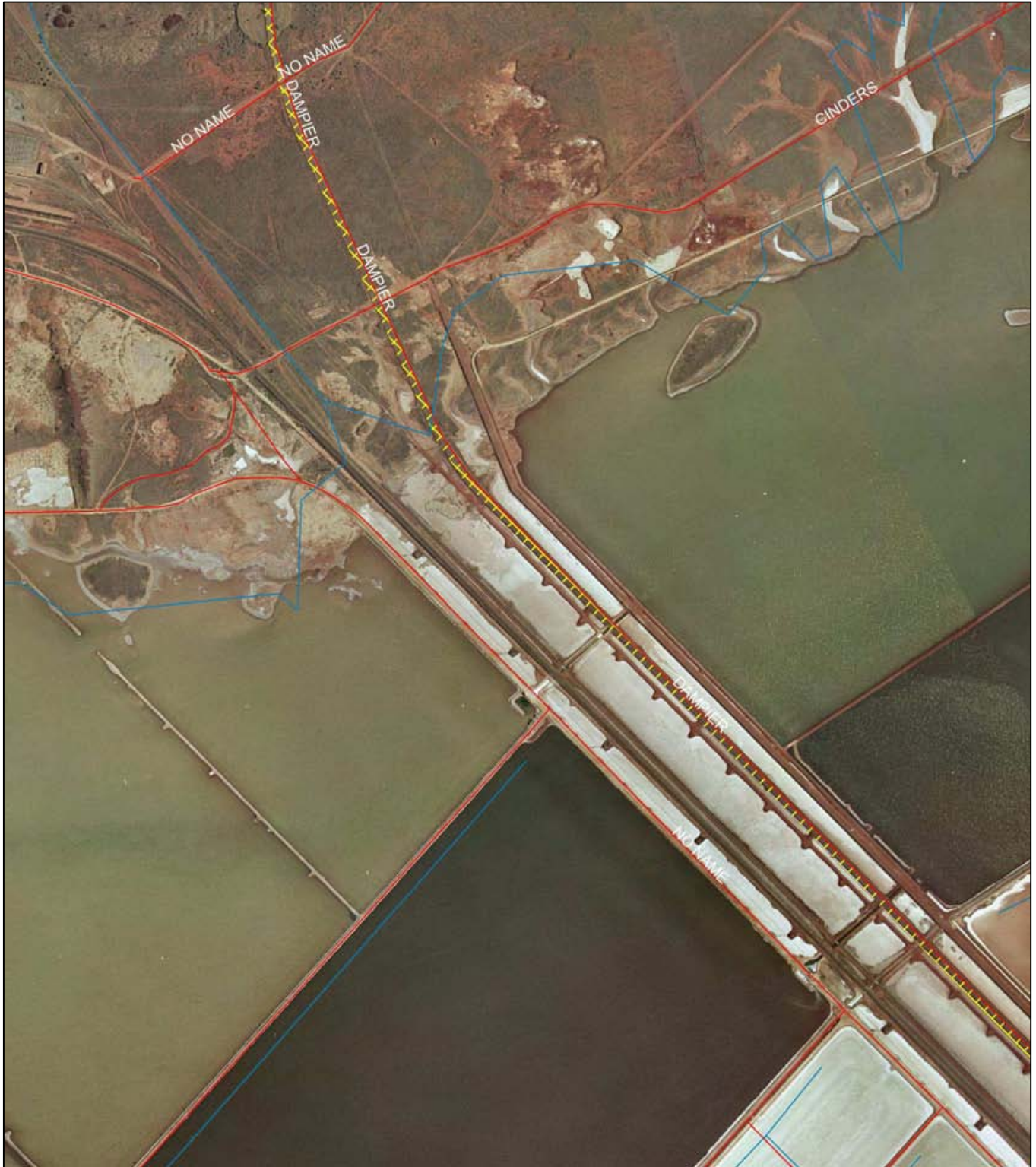
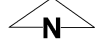


# Plan848/1-7



**LEGEND**

<p><b>Clearing Instruments</b></p> <ul style="list-style-type: none"> <li>□ Areas Applied to Clear</li> <li>● Towns - DLI 8/04</li> <li>■ Dampier Archipelago 80cm Orthomosaic - DLI 01</li> <li>✂ Road Centrelines - DLI 1/5/04</li> </ul>	<p><b>Hydrography, linear (hierarchy) - DOE 13/4/05</b></p> <ul style="list-style-type: none"> <li>~ Coastal Waterline</li> <li>~ Estuarine</li> <li>~ Infrastructure</li> <li>~ Inundation Area</li> <li>~ Mainstream (cont)</li> </ul>	<ul style="list-style-type: none"> <li>~ Major River</li> <li>~ Major Trib</li> <li>~ Minor River</li> <li>~ Minor Trib</li> <li>~ Paleo-Drainage Line</li> <li>~ Significant Stream</li> <li>~ Rivers 250K - GA</li> </ul>
---	--	---



0 ————— ~375m

Scale 1:15003  
(Approximate when reproduced A4)


Geocentric Datum Australia 1994

*Note: the data in this map have not been projected. This may result in geometric distortion or measurement inaccuracies.*

.....Date.....

Officer with delegated authority under Section 200 of the Environmental Protection Act 1986

Information derived from this map should be confirmed with the data custodian acknowledged by the agency acronym in the legend.



WACrown Copyright 2002