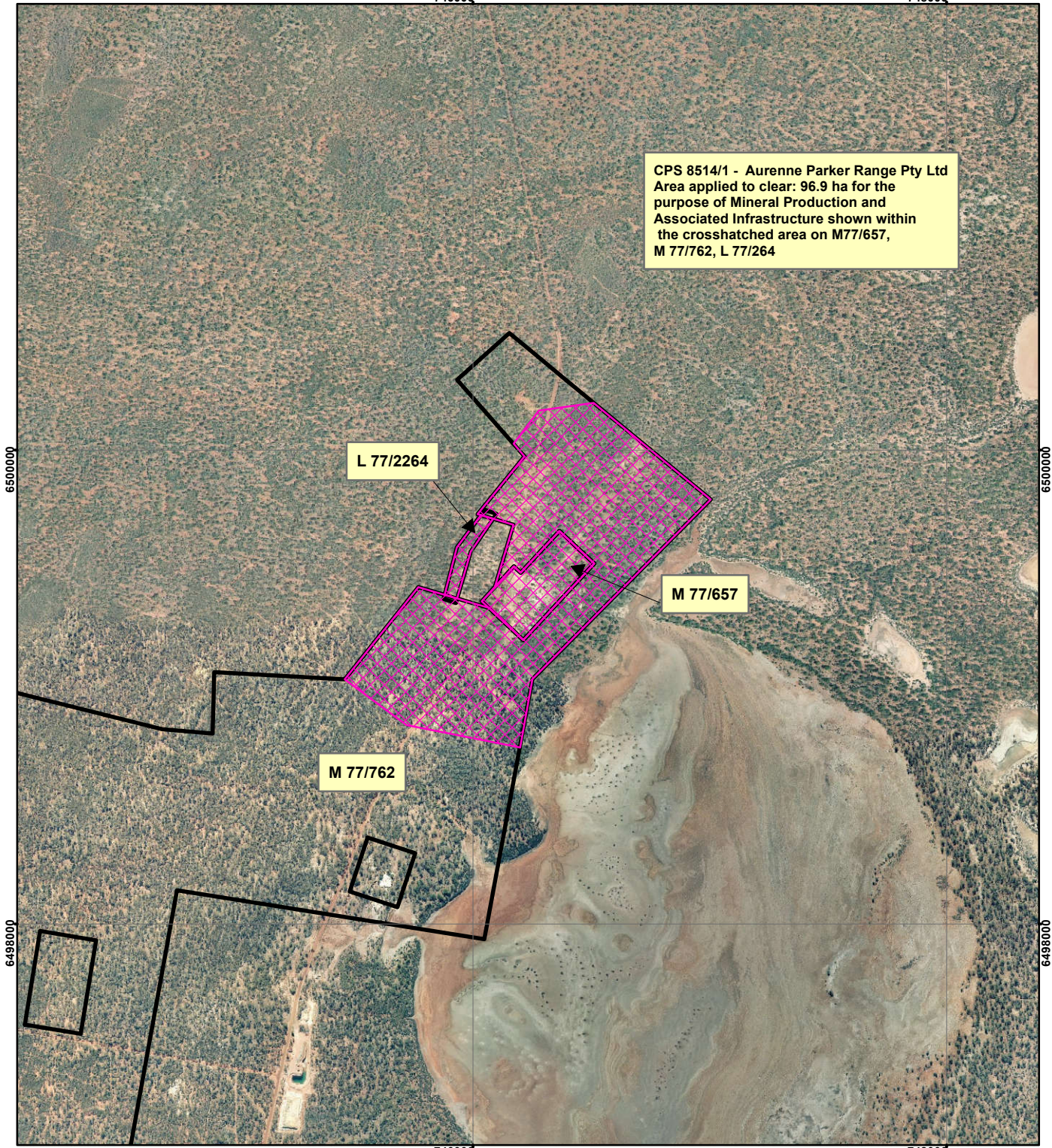


# CPS 8514/1 - Aurenne Parker Range Pty Ltd



746000

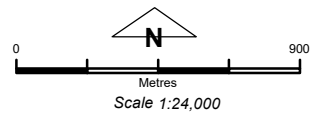
748000

CPS 8514/1 - Aurenne Parker Range Pty Ltd  
 Area applied to clear: 96.9 ha for the  
 purpose of Mineral Production and  
 Associated Infrastructure shown within  
 the crosshatched area on M77/657,  
 M 77/762, L 77/264



## Legend

-  Clearing Instruments
-  Mining Tenements



Geocentric Datum Australia 1994

*Note: the data in this map have not been projected. This may result in geometric distortion or measurement inaccuracies.*

..... Date .....

Officer with delegated authority under Section 20 of the Environmental Protection Act 1986

Information derived from this map should be confirmed with the data custodian acknowledged by the agency acronym in the legend.

