

Flora and Fauna Report

Desktop and Field Reconnaissance

Conducted by: Donna Rumenos BSc (Bot, Zool)

Property: Lot 5 Rutherford St, Manjimup

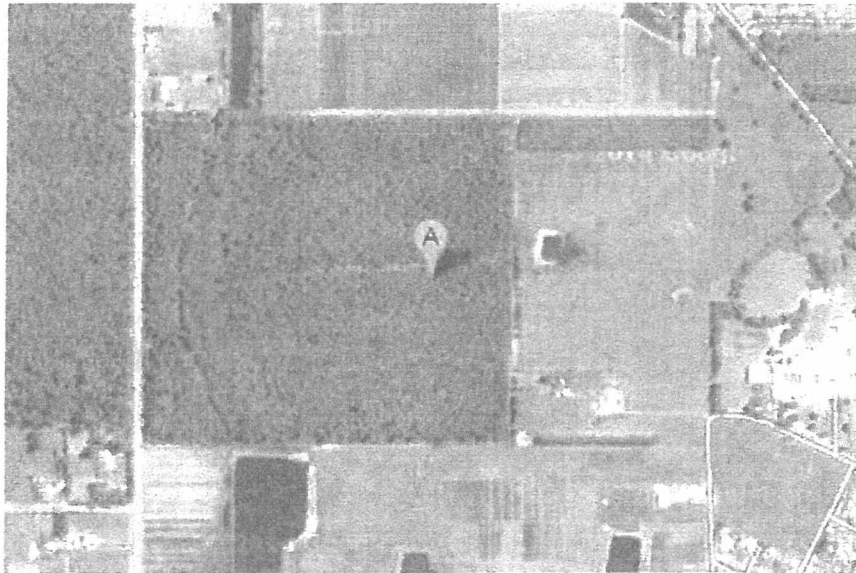


Image Source: Google Maps

Executive Summary

This property includes approximately 52ha of native vegetation, mainly open forest of marri and jarrah and a well vegetated creekline fringed by flooded gum. Structure is fairly intact aside from the absence of mature trees from past logging and some areas of blackberry. No conservation listed flora has been recorded within 5km. There is evidence of southern brown bandicoot and potential for western ring tail possum on the property.

Location

This property is located approx 2km NW of the Manjimup townsite. The majority of the property occurs within the Jarrah Forest IBRA with the remaining south western corner is in the Warren bioregion.

Surrounding properties are semi-rural and agricultural land (mainly orchards). Bordering to the west is Faunadale Nature Reserve. Directly to the east is the Manjimup Senior High School.

A reconnaissance of the bushland area was conducted on 3/05/2014.

Vegetation Complexes

Three vegetation complexes occur on the property as per Havel and Mattiske, 2000.

YN1 Yanmah (Km8). (29.5ha) Tall open forest of *Corymbia calophylla* (marri) over *Banksia grandis* and *Xanthorrhoea preissii*. Occasional *E. diversicolor* (karri) in south-west corner. Creekline area *Eucalyptus rudis* over *Banksia littoralis*, *Callistachys lanceolata* and *Melaleuca incana* and *Lepidosperma effusum*.

CL1 Corbalup (Jw7). (18.5ha) Open forest of *C. calophylla* (marri) and *E. marginata* (jarrah) over isolated *Banksia grandis* and *Bossiaea linophylla* and *Hovea trisperma*. Occasional *E. diversicolor* (karri) on southern boundary.

CO1 Collis (Mp8). (3.5ha) Open forest of *E. marginata* and *C. calophylla* over *B. grandis*, *Leucopogon verticillatus* and *Bossiaea linophylla*.

Vegetation Condition

Vegetation appears to mainly be in Good* to Very Good** condition on the Keighery scale, with most layers fairly intact. However previous logging has removed most of the large and mature trees, which reduces potential for tree hollows and associated biodiversity. Spacing of young trees (coppice and seedlings) is reduced.

Weeds noted include thickets of blackberry (*Rubus sp.*), some areas of dense flat sedge (*Cyperus congestus*) and isolated to scattered occurrences of black wattle (*Acacia mearnsii*), silver wattle (*Acacia dealbata*), Flinders Range wattle (*Acacia iteaphylla*) and cedar wattle (*Acacia elata*).

**Very Good – Vegetation structure altered, obvious signs of disturbance

*Good – Vegetation structure significantly altered by very obvious signs of multiple disturbance. Retains basic vegetation structure or ability to regenerate it.

Significant Flora

No conservation listed flora has been reported within a 5km radius (see Naturemap Search Results).

Significant Fauna

Diggings of the southern brown bandicoot (*Isodon obsolus subsp. fusciventer*, Priority 5) were evident on the property and the species occurs in Faunadale Nature Reserve (personal observation).

Baudin's black cockatoo (*Calyptorhynchus baudinii*) were observed on the property during reconnaissance.

Western ringtail possum (*Pseudocheirus occidentalis*, Threatened) are recently recorded from the adjacent Faunadale Nature Reserve. Other records within 5km include Brush-tailed Phascogale (*Phascogale tapoatafa subsp. tapoatafa*, Threatened), Forest Red-tailed Black Cockatoo (*Calyptorhynchus banksii naso*, Threatened) and Carnaby's Black Cockatoo (*Calyptorhynchus latirostris*, Threatened).

Sources of information

Casson, N., Downes, S. and Harris, A. (2009) *Native Vegetation Condition Assessment and Monitoring Manual for Western Australia*. Prepared for the National Vegetation Integrity Project. Department of Environment and Conservation, Perth, WA. Available from: <http://www.dec.wa.gov.au/management-and-protection/plants/monitoring.html>

Department of Environment and Conservation (2014) NatureMap: Mapping Western Australia's Biodiversity. Department of Environment and Conservation, Perth WA. Available from : <http://naturemap.dec.wa.gov.au> Search coordinates used : 116 7 29, 34 13 55. On 4/05/2014.

Havel JJ and Mattiske EM (2000) *Vegetation Mapping of South West Forest Region of Western Australia*. Part 3 – Appendix D (1-150). Prepared for Department of Conservation and Land Management and Environment Australia. Mattiske Consulting Pty Ltd.

Appendix 1. Flora Species list

(Noted during reconnaissance. Not extensive)

	Family	Scientific Name	Common Name	Conservation Status
1	Asparagaceae	<i>Lomandra sp.</i>		
2	Asteraceae	<i>Hypochaeris radicata</i>	Flatweed	Alien
3	Cyperaceae	<i>Cyperus congestus</i>	Dense Flat Sedge	Alien
4	Cyperaceae	<i>Gahnia decomposita</i>	Saw Sedge	Not Threatened
5	Cyperaceae	<i>Lepidosperma effusum</i>	Spreading Sword Sedge	Not Threatened
6	Dennstaedtiaceae	<i>Pteridium esculentum</i>	Bracken	Not Threatened
7	Dilleniaceae	<i>Hibbertia amplexicaulis</i>	0	Not Threatened
8	Dilleniaceae	<i>Hibbertia cuneiformis</i>	Cutleaf Hibbertia	Not Threatened
9	Dilleniaceae	<i>Hibbertia sp.</i>	0	Not Threatened
10	Elaeocarpaceae	<i>Tremandra diffusa</i>	0	Not Threatened
11	Elaeocarpaceae	<i>Tremandra stelligera</i>	0	Not Threatened
12	Ericaceae	<i>Leucopogon capitellatus</i>	0	Not Threatened
13	Ericaceae	<i>Leucopogon propinquus</i>	0	Not Threatened
14	Ericaceae	<i>Leucopogon sp. Southern Forests</i>	0	Not Threatened
15	Ericaceae	<i>Leucopogon verticillatus</i>	Tassel Flower	Not Threatened
16	Fabaceae	<i>Acacia dealbata</i>	Silver Wattle	Alien
17	Fabaceae	<i>Acacia elata</i>	Cedar Wattle	Alien
18	Fabaceae	<i>Acacia iteaphylla</i>	Flinders Range Wattle	Alien
19	Fabaceae	<i>Acacia mearnsii</i>	Black Wattle	Alien
20	Fabaceae	<i>Acacia mooreana</i>	0	Not Threatened
21	Fabaceae	<i>Acacia myrtifolia</i>	0	Not Threatened

22	Fabaceae	<i>Acacia saligna</i>	Orange Wattle	Not Threatened
23	Fabaceae	<i>Acacia sp.</i>	0	0
24	Fabaceae	<i>Acacia urophylla</i>	Net-leafed Acacia	Not Threatened
25	Fabaceae	<i>Bossiaea linophylla</i>	0	Not Threatened
26	Fabaceae	<i>Callistachys lanceolata</i>	Wonnich, Native Willow	Not Threatened
27	Fabaceae	<i>Hardenbergia comptoniana</i>	Native Wisteria	Not Threatened
28	Fabaceae	<i>Hovea trisperma</i>	Common Hovea	Not Threatened
29	Goodeniaceae	<i>Goodenia eatoniana</i>	0	Not Threatened
30	Goodeniaceae	<i>Scaevola calliptera</i>	Royal Robe	Not Threatened
31	Haemodoraceae	<i>Anigozanthos flavidus</i>	Tall Kangaroo Paw	Not Threatened
32	Haemodoraceae	<i>Conostylis sp.</i>		
33	Hemerocallidaceae	<i>Stypandra glauca</i>	Blind Grass	Not Threatened
34	Iridaceae	<i>Patersonia sp.</i>		
35	Lamiaceae	<i>Mentha pulegium</i>	Pennyroyal	Alien
36	Myrtaceae	<i>Corymbia calophylla</i>	Marri	Not Threatened
37	Myrtaceae	<i>Eucalyptus diversicolor</i>	Karri	Not Threatened
38	Myrtaceae	<i>Eucalyptus marginata</i>	Jarrah	Not Threatened
39	Myrtaceae	<i>Eucalyptus patens</i>	Swan River Blackbutt	Not Threatened
40	Myrtaceae	<i>Eucalyptus rudis</i>	Flooded Gum	Not Threatened
41	Myrtaceae	<i>Melaleuca incana</i>	Grey Honey myrtle	Not Threatened
42	Myrtaceae	<i>Taxandria linearifolia</i>	Swamp Peppermint	Not Threatened
43	Myrtaceae	<i>Taxandria parviceps</i>	Fine Teatree	Not Threatened
44	Pittosporaceae	<i>Billardiera heterophylla</i>	Australian Bluebell	Not Threatened
45	Podocarpaceae	<i>Podocarpus drouynianus</i>	Wild Plum, Emu Bush	Not Threatened
46	Proteaceae	<i>Banksia grandis</i>	Bull Banksia	Not Threatened
47	Proteaceae	<i>Banksia littoralis</i>	Swamp Banksia	Not Threatened
48	Proteaceae	<i>Hakea oleifolia</i>	Dungyn	Not Threatened
49	Proteaceae	<i>Hakea prostrata</i>	Harsh Hakea	Not Threatened
50	Proteaceae	<i>Persoonia longifolia</i>	Snottygobble	Not Threatened
51	Restionaceae	<i>Desmocladus fasciculatus</i>	0	Not Threatened
52	Restionaceae	<i>Desmocladus flexuosus</i>	0	Not Threatened
53	Restionaceae	<i>Loxocarya cinerea</i>	0	Not Threatened
54	Restionaceae	<i>Meeboldina roycei</i>	0	Not Threatened
55	Rosaceae	<i>Rubus sp.</i>	Blackberry	Alien-DP
56	Xanthorrhoeaceae	<i>Xanthorrhoea brunonis</i>	0	Not Threatened
57	Xanthorrhoeaceae	<i>Xanthorrhoea preissii</i>	Grass Tree	Not Threatened
58	Zamiaceae	<i>Macrozamia riedlei</i>	Zamia	Not Threatened

NatureMap Species Report

Created By Guest user on 04/05/2014

Current Names Only Yes

Core Datasets Only Yes

Method 'By Circle'

Centre 116°07' 01" E, 34°18' 12" S

Buffer 5km

Group By Conservation Status

Conservation Status	Species	Records
Rare or likely to become extinct	5	17
Protected under international agreement	2	5
Priority 4	1	1
Priority 5	1	2
Non-conservation taxon	267	1185
TOTAL	276	1210

Name ID	Species Name	Naturalised	Conservation Code	Endemic To Query Area
Rare or likely to become extinct				
1.	24731 <i>Calyptrorhynchus banksii</i> subsp. <i>naso</i> (Forest Red-tailed Black-Cockatoo)		T	
2.	24733 <i>Calyptrorhynchus baudinii</i> (Baudin's Cockatoo (long-billed black-cockatoo), Baudin's Cockatoo)		T	
3.	24734 <i>Calyptrorhynchus latirostris</i> (Camaby's Cockatoo (short-billed black-cockatoo), Camaby's Cockatoo)		T	
4.	24099 <i>Phascogale tapoatafa</i> subsp. <i>tapoatafa</i> (Southern Brush-tailed Phascogale, Wambenger)		T	
5.	24166 <i>Pseudocheirus occidentalis</i> (Western Ringtail Possum)		T	
Protected under international agreement				
6.	25558 <i>Ardea ibis</i> (Cattle Egret)		IA	
7.	41324 <i>Ardea modesta</i> (Eastern Great Egret)		IA	
Priority 4				
8.	24133 <i>Macropus irma</i> (Western Brush Wallaby)		P4	
Priority 5				
9.	24153 <i>Isodon obesulus</i> subsp. <i>fusciventer</i> (Quenda, Southern Brown Bandicoot)		P5	
Non-conservation taxon				
10.	18285 <i>Acacia baileyana</i>	Y		
11.	18287 <i>Acacia elata</i>	Y		
12.	3331 <i>Acacia extensa</i> (Wiry Wattle)			
13.	18217 <i>Acacia iteaphylla</i>	Y		
14.	3453 <i>Acacia myrtifolia</i>			
15.	35624 <i>Acacia pentadenia</i> subsp. <i>pentadenia</i>			
16.	17860 <i>Acacia podalyriifolia</i>	Y		
17.	3502 <i>Acacia pulchella</i> (Prickly Moses)			
18.	15482 <i>Acacia pulchella</i> var. <i>goadbyi</i>			
19.	24260 <i>Acanthiza apicalis</i> (Broad-tailed Thornbill, Inland Thornbill)			
20.	24261 <i>Acanthiza chrysorrhoa</i> (Yellow-rumped Thornbill)			
21.	24262 <i>Acanthiza inornata</i> (Western Thornbill)			
22.	24560 <i>Acanthorhynchus superciliosus</i> (Western Spinebill)			
23.	25535 <i>Accipiter cirrocephalus</i> (Collared Sparrowhawk)			
24.	17774 <i>Acetosella vulgaris</i>	Y		
25.	25755 <i>Acrocephalus australis</i> (Australian Reed Warbler)			
26.	23474 <i>Agrostocrinum hirsutum</i>			
27.	1378 <i>Allium triquetrum</i> (Three-cornered Garlic)	Y		
28.	2652 <i>Alternanthera nodiflora</i> (Common Joyweed)			
29.	2668 <i>Amaranthus powellii</i> (Powell's Amaranth)	Y		
30.	13101 <i>Amperea simulans</i>			
31.	198 <i>Amphipogon laguroides</i>			
32.	24312 <i>Anas gracilis</i> (Grey Teal)			
33.	24316 <i>Anas superciliosa</i> (Pacific Black Duck)			

Name ID	Species Name	Naturalised	Conservation Code	Endemic To Query Area
34.	24088 <i>Antechinus flavipes</i> subsp. <i>leucogaster</i> (Yellow-footed Antechinus, Mardo)			
35.	24561 <i>Anthochaera carunculata</i> (Red Wattlebird)			
36.	24285 <i>Aquila audax</i> (Wedge-tailed Eagle)			
37.	11542 <i>Arrhenatherum elatius</i> var. <i>bulbosum</i> (Onion Twitch)	Y		
38.	25566 <i>Artamus cinereus</i> (Black-faced Woodswallow)			
39.	24353 <i>Artamus cyanopterus</i> (Dusky Woodswallow)			
40.	27584 <i>Arthonia hicina</i>			
41.	226 <i>Arundo donax</i> (Giant Reed)	Y		
42.	1201 <i>Asparagus officinalis</i> (Asparagus)	Y		
43.	24318 <i>Aythya australis</i> (Hardhead)			
44.	1819 <i>Banksia grandis</i> (Bull Banksie, Pulgarla)			
45.	32315 <i>Barbula calycina</i>			
46.	3157 <i>Billardiera floribunda</i> (White-flowered Billardiera)			
47.	3165 <i>Billardiera varifolia</i>			
48.	24319 <i>Biziura lobata</i> (Musk Duck)			
49.	14397 <i>Bossiaea aquifolium</i> subsp. <i>laidlawiana</i>			
50.	3713 <i>Bossiaea linophylla</i>			
51.	244 <i>Briza maxima</i> (Blowfly Grass)	Y		
52.	245 <i>Briza minor</i> (Shivery Grass)	Y		
53.	249 <i>Bromus diandrus</i> (Great Brome)	Y		
54.	25598 <i>Cacomantis flabelliformis</i> (Fan-tailed Cuckoo)			
55.	42307 <i>Cacomantis pallidus</i> (Pallid Cuckoo)			
56.	10861 <i>Callistachys lanceolata</i> (Wonnich)			
57.	25717 <i>Calyptorhynchus banksii</i> (Red-tailed Black-Cockatoo)			
58.	32338 <i>Campylopus introflexus</i>	Y		
59.	27645 <i>Candelariella xanthostigmoides</i>			
60.	11799 <i>Cassytha racemosa</i> forma <i>racemosa</i>			
61.	6539 <i>Centaureum erythraea</i> (Common Centaury)	Y		
62.	6542 <i>Centaureum tenuiflorum</i>	Y		
63.	24086 <i>Cercartetus concinnus</i> (Western Pygmy-possum, Mundarda)			
64.	1280 <i>Chamaescilla corymbosa</i> (Blue Squill)			
65.	1513 <i>Chasmanthe floribunda</i> (African Cornflag)	Y		
66.	24321 <i>Chenonetta jubata</i> (Australian Wood Duck, Wood Duck)			
67.	2483 <i>Chenopodium album</i> (Fat Hen)	Y		
68.	24834 <i>Cincloerampus mathewsi</i> (Rufous Songlark)			
69.	24288 <i>Circus approximans</i> (Swamp Harrier)			
70.	27663 <i>Cladia aggregata</i>			
71.	27684 <i>Cladonia krempelhuberi</i>			
72.	27685 <i>Cladonia macilenta</i>			
73.	27688 <i>Cladonia ochrochlora</i>			
74.	27691 <i>Cladonia ramulosa</i>			
75.	27692 <i>Cladonia rigida</i>			
76.	2929 <i>Clematis pubescens</i> (Common Clematis)			
77.	24396 <i>Climacteris rufa</i> (Rufous Treecreeper)			
78.	25675 <i>Colluricincla harmonica</i> (Grey Shrike-thrush)			
79.	7939 <i>Coryza bonariensis</i> (Flaxleaf Fleabane)	Y		
80.	25568 <i>Coracina novaehollandiae</i> (Black-faced Cuckoo-shrike)			
81.	25592 <i>Corvus coronoides</i> (Australian Raven)			
82.	12945 <i>Corybas recurvus</i>			
83.	17104 <i>Corymbia calophylla</i> (Marr)			
84.	25701 <i>Coturnix ypsilophora</i> (Brown Quail)			
85.	25595 <i>Cracticus tibicen</i> (Australian Magpie)			
86.	25398 <i>Crinia georgiana</i> (Quacking Frog)			
87.	1627 <i>Cryptostylis ovata</i> (Slipper Orchid)			
88.	25049 <i>Ctenotus labillardieri</i>			
89.	24322 <i>Cygnus atratus</i> (Black Swan)			
90.	30901 <i>Decelo novaeguineae</i> (Laughing Kookaburra)	Y		
91.	17691 <i>Desmocladius fasciculatus</i>			
92.	32344 <i>Dicranoloma diaphanoneuron</i>			
93.	32345 <i>Didymodon australasiae</i>			
94.	3867 <i>Dipogon lignosus</i> (Dolichos Pea)	Y		
95.	7961 <i>Dittrichia graveolens</i> (Stinkwort)	Y		
96.	3118 <i>Drosera pallida</i> (Pale Rainbow)			
97.	3131 <i>Drosera stolonifera</i> (Leafy Sundew)			
98.	11105 <i>Echinochloa crus-galli</i>	Y		
99.	25096 <i>Egernia kingii</i> (King's Skink)			
100.	347 <i>Ehrharta calycina</i> (Perennial Veldt Grass)	Y		
101.	353 <i>Eleusine indica</i> (Crowsfoot Grass)	Y		
102.	24652 <i>Eopsaltria georgiana</i> (White-breasted Robin)			
103.	4332 <i>Erodium botrys</i> (Long Storksbill)	Y		

	Name ID	Species Name	Naturalised	Conservation Code	¹ Endemic To Query Area
104.	4333	<i>Erodium cicutarium</i> (Common Storksbill)	Y		
105.	2962	<i>Eschscholzia californica</i>	Y		
106.	5625	<i>Eucalyptus diversicolor</i> (Karr)			
107.	13547	<i>Eucalyptus marginata</i> subsp. <i>marginata</i> (Jarrah)			
108.	4638	<i>Euphorbia pepus</i> (Petty Spurge)	Y		
109.	25622	<i>Falco cenchroides</i> (Australian Kestrel)			
110.	25623	<i>Falco longipennis</i> (Australian Hobby)			
111.	32469	<i>Fissidens taylorii</i> var. <i>taylorii</i>			
112.	6221	<i>Foeniculum vulgare</i> (Fennel)	Y		
113.	18392	<i>Freesia alba</i> x <i>leichtlinii</i>	Y		
114.	25727	<i>Fulica atra</i> (Eurasian Coot)			
115.	39033	<i>Fuligo septica</i>			
116.	32370	<i>Funaria hygrometrica</i>			
117.	3891	<i>Gastrolobium bñobum</i> (Heart Leaf Poison)			
118.	36920	<i>Gemmabryum coronatum</i>			Y
119.	18143	<i>Genista monspessulana</i>	Y		
120.	4337	<i>Geranium dissectum</i> (Cutleaf Cranesbill)	Y		
121.	25530	<i>Gerygone fusca</i> (Western Gerygone)			
122.	1518	<i>Gladiolus angustus</i> (Long Tubed Painted Lady)	Y		
123.	1524	<i>Gladiolus undulatus</i> (Wild Gladiolus)	Y		
124.	24735	<i>Glossopsitta porphyrocephala</i> (Purple-crowned Lorikeet)			
125.	3953	<i>Gompholobium ovatum</i>			
126.	7505	<i>Goodenia eatoniana</i>			
127.	24443	<i>Grallina cyanoleuca</i> (Magpie-lark)			
128.	14282	<i>Gratiola pubescens</i>			
129.	27765	<i>Haematomma sorediatum</i>			
130.	2128	<i>Hakea amplexicaulis</i> (Prickly Hakea)			
131.	41267	<i>Halegrapha mucronata</i>			
132.	24295	<i>Haliastur sphenurus</i> (Whistling Kite)			
133.	3961	<i>Hardenbergia comptoniana</i> (Native Wisteria)			
134.	25117	<i>Hemiargis peronii</i> subsp. <i>peronii</i>			
135.	5109	<i>Hibbertia amplexicaulis</i>			
136.	5114	<i>Hibbertia commutata</i>			
137.	5117	<i>Hibbertia cuneiformis</i> (Cutleaf Hibbertia)			
138.	5118	<i>Hibbertia cunninghamii</i>			
139.	5132	<i>Hibbertia grossularifolia</i>			
140.	24491	<i>Hirundo neoxena</i> (Welcome Swallow)			
141.	449	<i>Hordeum leporinum</i> (Barley Grass)	Y		
142.	3964	<i>Hovea chorizemifolia</i> (Holly-leaved Hovea)			
143.	3965	<i>Hovea elliptica</i> (Tree Hovea)			
144.	5218	<i>Hybanthus debilissimus</i>			
145.	8086	<i>Hypochaeris glabra</i> (Smooth Catsear)	Y		
146.	9352	<i>Hypochaeris radicata</i> (Flat Weed)	Y		
147.	27785	<i>Hypogymnia pulchrilobata</i>			
148.	27787	<i>Hypogymnia subphysodes</i>			
149.	28219	<i>Hypogymnia subphysodes</i> var. <i>subphysodes</i>			
150.	32396	<i>Ischyrodon lepturus</i>			
151.	1532	<i>Ixia maculata</i> (Yellow Ixia)	Y		
152.	4037	<i>Kennedia coccinea</i> (Coral Vine)			
153.	8096	<i>Lactuca serriola</i> (Prickly Lettuce)	Y		
154.	18585	<i>Lagenophora huegelii</i>			
155.	38323	<i>Lavandula stoechas</i> subsp. <i>stoechas</i>	Y		
156.	932	<i>Lepidosperma effusum</i> (Spreading Sword-sedge)			
157.	934	<i>Lepidosperma gracile</i> (Slender Sword Sedge)			
158.	5850	<i>Leptospermum laevigatum</i> (Coast Teatree)	Y		
159.	1493	<i>Leucopogon aestivalum</i> (Snowflake)	Y		
160.	6367	<i>Leucopogon capitellatus</i>			
161.	6436	<i>Leucopogon propinquus</i>			
162.	6454	<i>Leucopogon verticillatus</i> (Tassel Flower)			
163.	25661	<i>Lichmera indistincta</i> (Brown Honeyeater)			
164.	59	<i>Lindsaea linearis</i> (Screw Fern)			
165.	4363	<i>Linum trigynum</i> (French Flax)	Y		
166.	14551	<i>Logania sarpyllifolia</i> subsp. <i>serpyllifolia</i>			
167.	6515	<i>Logania vaginalis</i> (White Spray)			
168.	476	<i>Lolium perenne</i> (Perennial Ryegrass)	Y		
169.	1225	<i>Lomandra drummondii</i>			
170.	1229	<i>Lomandra integra</i>			
171.	1238	<i>Lomandra pauciflora</i>			
172.	36375	<i>Lysimachia arvensis</i> (Pimpernel)	Y		
173.	85	<i>Macrozamia riedlei</i> (Zamia, Djindji)			

	Name ID	Species Name	Naturalised	Conservation Code	¹ Endemic To Query Area
174.	25650	<i>Malurus elegans</i> (Red-winged Fairy-wren)			
175.	25654	<i>Malurus splendens</i> (Splendid Fairy-wren)			
176.	27850	<i>Megalaria grossa</i>			
177.	25758	<i>Megalurus gramineus</i> (Little Grassbird)			
178.	6883	<i>Mentha pulegium</i> (Pennyroyal)	Y		
179.	19179	<i>Moreea flaccida</i> (One-leaf Cape Tulip)	Y		
180.	25610	<i>Myiagra inquieta</i> (Restless Flycatcher)			
181.	6189	<i>Myriophyllum crispatum</i>			
182.	1495	<i>Narcissus tazetta</i> (Jonquil)	Y		
183.	24738	<i>Neophema elegans</i> (Elegant Parrot)			
184.	25748	<i>Ninox novaeseelandiae</i> (Boobook Owl)			
185.	25564	<i>Nycticorax caledonicus</i> (Rufous Night Heron)			
186.	6139	<i>Oenothera glazioviana</i> (Evening Primrose)	Y		
187.	6503	<i>Olea europaea</i> (Olive)	Y		
188.	7348	<i>Opercularia hispidula</i> (Hispid Stinkweed)			
189.	32406	<i>Orthodontium lineare</i>			
190.	4352	<i>Oxalis glabra</i>	Y		
191.	4354	<i>Oxalis incarnata</i>	Y		
192.	4358	<i>Oxalis purpurea</i> (Largeflower Wood Sorrel)	Y		
193.	24328	<i>Oxyura australis</i> (Blue-billed Duck)			
194.	25679	<i>Pachycephala pectoralis</i> (Golden Whistler)			
195.	24623	<i>Pachycephala pectoralis</i> subsp. <i>fuliginosa</i> (Golden Whistler)			
196.	25680	<i>Pachycephala rufiventris</i> (Rufous Whistler)			
197.	27905	<i>Paraportidia glauca</i>			
198.	25681	<i>Pardalotus punctatus</i> (Spotted Pardalote)			
199.	24626	<i>Pardalotus punctatus</i> subsp. <i>xanthopyge</i> (Yellow-rumped Pardalote)			
200.	25682	<i>Pardalotus striatus</i> (Striated Pardalote)			
201.	30458	<i>Parmotrema reticulatum</i>			
202.	1553	<i>Paterosia umbrosa</i> (Yellow Flags)			
203.	2267	<i>Persoonia longifolia</i> (Snottygobble)			
204.	27954	<i>Pertusaria subventosa</i>			
205.	24409	<i>Phaps chalcoptera</i> (Common Bronzewing)			
206.	25587	<i>Phaps elegans</i> (Brush Bronzewing)			
207.	24596	<i>Phylidonyris novaehollandiae</i> (New Holland Honeyeater)			
208.		<i>Phytophthora cinnamomi</i>			
209.	5239	<i>Pimelea clavata</i>			
210.	24841	<i>Platalea flavipes</i> (Yellow-billed Spoonbill)			
211.	25720	<i>Platycercus icterotis</i> (Western Rosella)			
212.	24745	<i>Platycercus icterotis</i> subsp. <i>icterotis</i> (Western Rosella)			
213.	6259	<i>Platysace tenuissima</i>			
214.	86	<i>Podocarpus drouynianus</i> (Wild Plum, Kula)			
215.	582	<i>Polypogon monspeliensis</i> (Annual Beardgrass)	Y		
216.	24683	<i>Pomatostomus superciliosus</i> (White-browed Babbler)			
217.	25731	<i>Porphyrio porphyrio</i> (Purple Swamphen)			
218.	24769	<i>Porzana fluminea</i> (Australian Spotted Crane)			
219.	25732	<i>Porzana pusilla</i> (Baillon's Crane)			
220.	110	<i>Polamogeton drummondii</i>			
221.	41651	<i>Pteridium esculentum</i> subsp. <i>esculentum</i>			
222.	18655	<i>Pterostylis</i> sp. <i>crinkled leaf</i> (G.J. Keighery 13426)			
223.	32480	<i>Racopilum cuspidigerum</i> var. <i>convolutaceum</i>			
224.	32422	<i>Rhaphidorrhynchium amoenum</i>			
225.	25614	<i>Rhipidura leucophrys</i> (Willie Wagtail)			
226.	1556	<i>Romulea rosea</i> (Guildford Grass)	Y		
227.	3066	<i>Rorippa nasturtium-aquaticum</i> (Watercress)	Y		
228.	32426	<i>Rosulabryum campylotheicum</i>			
229.	20506	<i>Rubus angiocandicans</i>	Y		
230.	3192	<i>Sanguisorba minor</i> (Sheep's Burnet)	Y		
231.	7602	<i>Scaevola calliptera</i>			
232.	41660	<i>Schenkia australis</i>			
233.	32433	<i>Sematophyllum homomallum</i>			
234.	25534	<i>Sericornis frontalis</i> (White-browed Scrubwren)			
235.	30948	<i>Smicromis brevirostris</i> (Weebill)			
236.	8230	<i>Sonchus asper</i> (Rough Sowthistle)	Y		
237.	4207	<i>Sphaerolobium medium</i>			
238.	24645	<i>Stagonopleura oculata</i> (Red-eared Firetail)			
239.	39881	<i>Stylidium acuminatum</i> subsp. <i>meridionale</i>			
240.	7684	<i>Stylidium amoenum</i> (Lovely Triggerplant)			
241.	20694	<i>Stylidium planirosulum</i>			
242.	7787	<i>Stylidium rhynchocarpum</i> (Black-beaked Triggerplant)			
243.	25902	<i>Symphotrichum squamatum</i> (Bushy Starwort)	Y		

	Name ID	Species Name	Naturalised	Conservation Code	¹ Endemic To Query Area
244.	25705	<i>Tachybaptus novaehollandiae</i> (Australasian Grebe, Black-throated Grebe)			
245.	24331	<i>Tadorna tadornoides</i> (Australian Shelduck, Mountain Duck)			
246.	20135	<i>Texandria linearifolia</i>			
247.	20133	<i>Texandria parviceps</i>			
248.	35579	<i>Tetraria</i> sp. Jarrah Forest (R. Davis 7391)			
249.	667	<i>Tetrarrhena laevis</i> (Forrest Ricegrass)			
250.	24844	<i>Threskiornis molucca</i> (Australian White Ibis)			
251.	24845	<i>Threskiornis spinicollis</i> (Straw-necked Ibis)			
252.	32442	<i>Thuidium sparsum</i>			
253.	32486	<i>Thuidium sparsum</i> var. <i>hastatum</i>			
254.	1339	<i>Thysanotus multiflorus</i> (Many-flowered Fringe Lily)			
255.	25549	<i>Todiramphus sanctus</i> (Sacred Kingfisher)			
256.	8250	<i>Tragopogon portifolius</i> (Salsify)	Y		
257.	4547	<i>Tremandra diffusa</i>			
258.	4548	<i>Tremandra stelligera</i>			
259.	24158	<i>Trichosurus vulpecula</i> subsp. <i>vulpecula</i> (Common Brushtail Possum)			
260.	4307	<i>Trifolium repens</i> (White Clover)	Y		
261.	4313	<i>Trifolium subterraneum</i> (Subterranean Clover)	Y		
262.	28087	<i>Usnea inermis</i>			
263.	8257	<i>Vellereophyton dealbatum</i> (White Cudweed)	Y		
264.	7108	<i>Veronica arvensis</i> (Wall Speedwell)	Y		
265.	6575	<i>Vinca major</i> (Blue Periwinkle)	Y		
266.	722	<i>Vulpia bromoides</i> (Squirrel Tail Fescue)	Y		
267.	13103	<i>Watsonia borbonica</i>	Y		
268.	1567	<i>Watsonia meriana</i> (Bulbil Watsonia)	Y		
269.	18118	<i>Watsonia meriana</i> var. <i>meriana</i>	Y		
270.	32455	<i>Weissia controversa</i>			
271.	28194	<i>Xanthoria parietina</i>			
272.	1253	<i>Xanthorrhoea gracilis</i> (Graceful Grass Tree, Mimidi)			
273.	6284	<i>Xanthosia candida</i>			
274.	19330	<i>Xanthosia tasmanica</i>			
275.	25765	<i>Zosterops lateralis</i> (Grey-breasted White-eye, Silvereye)			
276.	32457	<i>Zygodon intermedius</i>			

Conservation Codes
T - Rare or likely to become extinct
X - Presumed extinct
(A) - Protected under international agreement
S - Other specially protected fauna
1 - Priority 1
2 - Priority 2
3 - Priority 3
4 - Priority 4
5 - Priority 5

¹ For NatureMap's purposes, species flagged as endemic are those whose records are wholly contained within the search area. Note that only those records complying with the search criterion are included in the calculation. For example, if you limit records to those from a specific datasource, only records from that datasource are used to determine if a species is restricted to the query area.