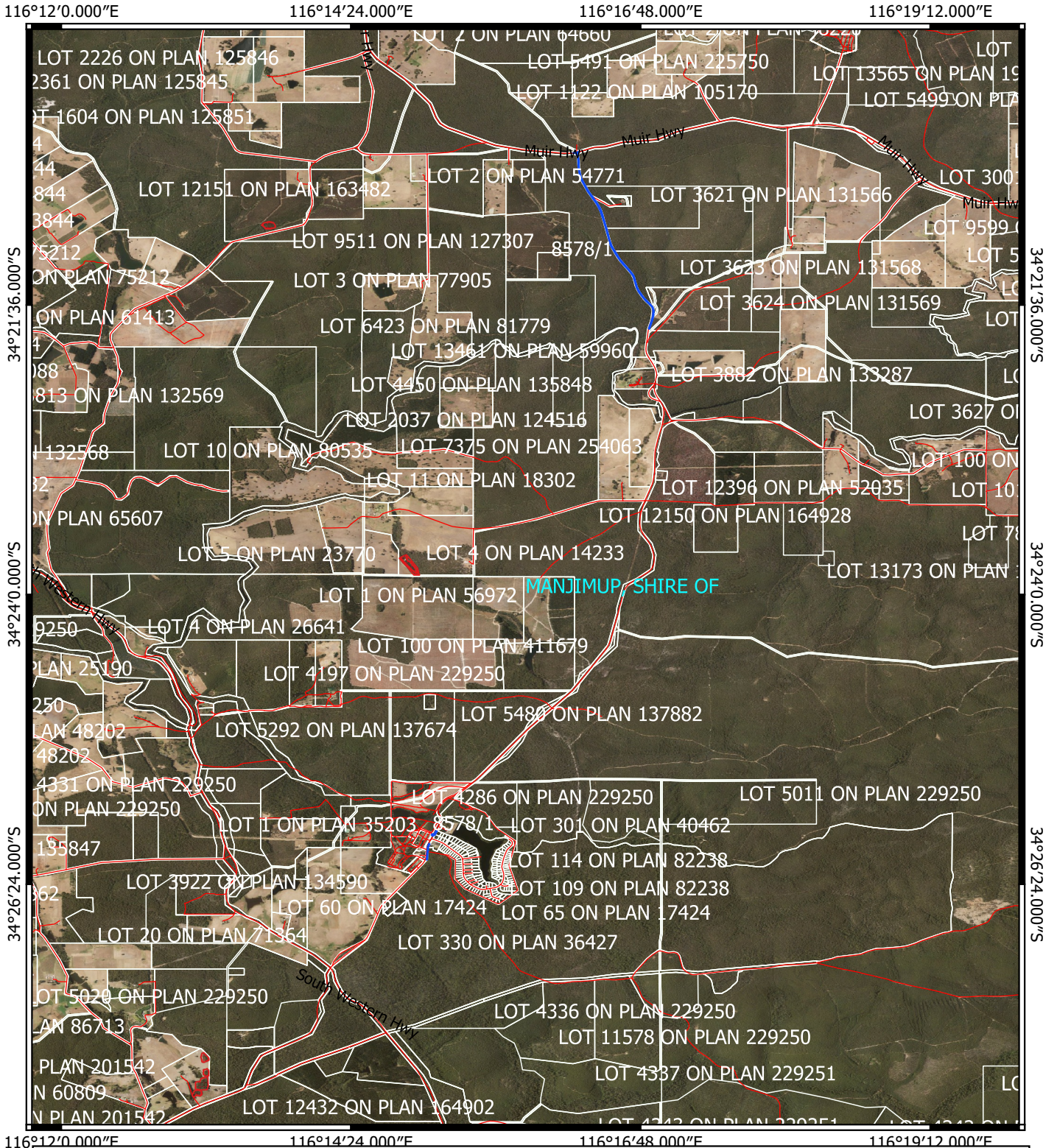






# CPS 8578/1 - Context Map



## Legend

-  Cadastre
-  CPS areas applied to clear
-  Local Government Authorities
-  Road Centrelines



0 1 2 3 4 km



Officer delegated under section 20 of the  
Environmental Protection Act 1986



GOVERNMENT OF  
WESTERN AUSTRALIA