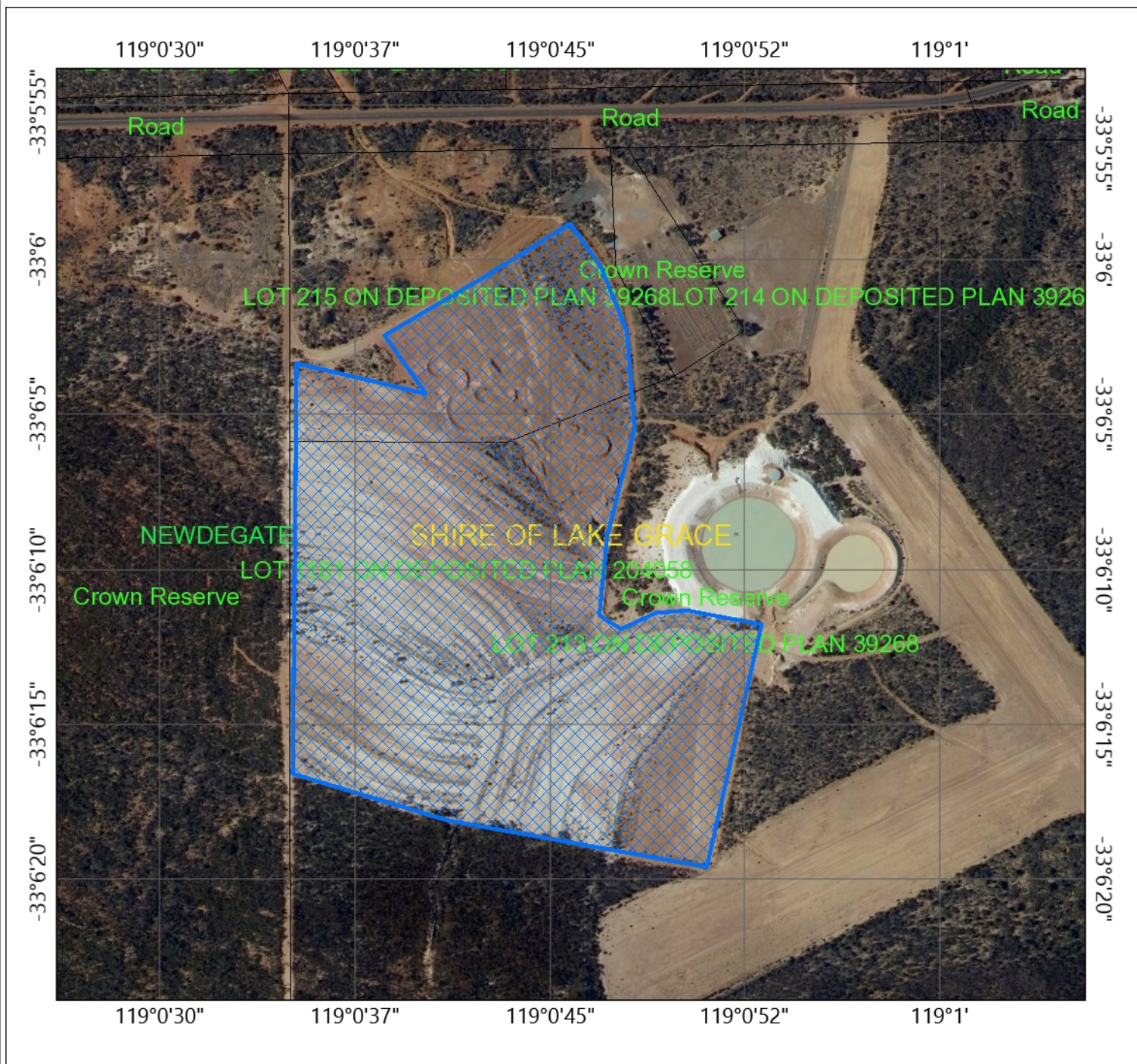


CPS 8584/1 Map



Legend

- CPS areas applied to clear

Local Government
Authorities

BOUNDARY_ID

3217486 - 4388591

Localities - DLI

Roads - State Roads

Cadastre (LGATE_218) -
SLIP

0.2 0.09 0.2 Kilometers



WGS_1984_Web_Mercator_Auxiliary_Sphere

Officer

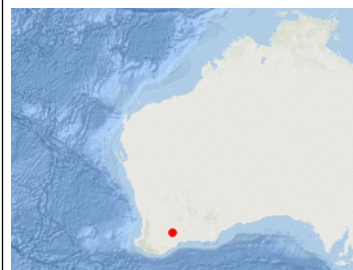
Date

Officer with delegated authority under Section 20 of the Environmental Protection
Act 1986.

Disclaimer: This map is used as a generic static output for reference purposes.
Information on this map may or may not be accurate, current, or otherwise reliable.
While the Department of Water and Environmental Regulation, has made all
reasonable efforts to ensure the accuracy of this data, the department accepts no
responsibility for any inaccuracies and persons relying on this data do so at their
own risk.

Copyright Department of Water and Environmental Regulation 2019. All Rights
Reserved. All works and information displayed are subject to Copyright. For the
reproduction or publication beyond that permitted by the Commonwealth Copyright
Act 1968 written permission must be sought from the Agency.

Locality Map



Government of Western Australia
Department of Water and Environmental Regulation