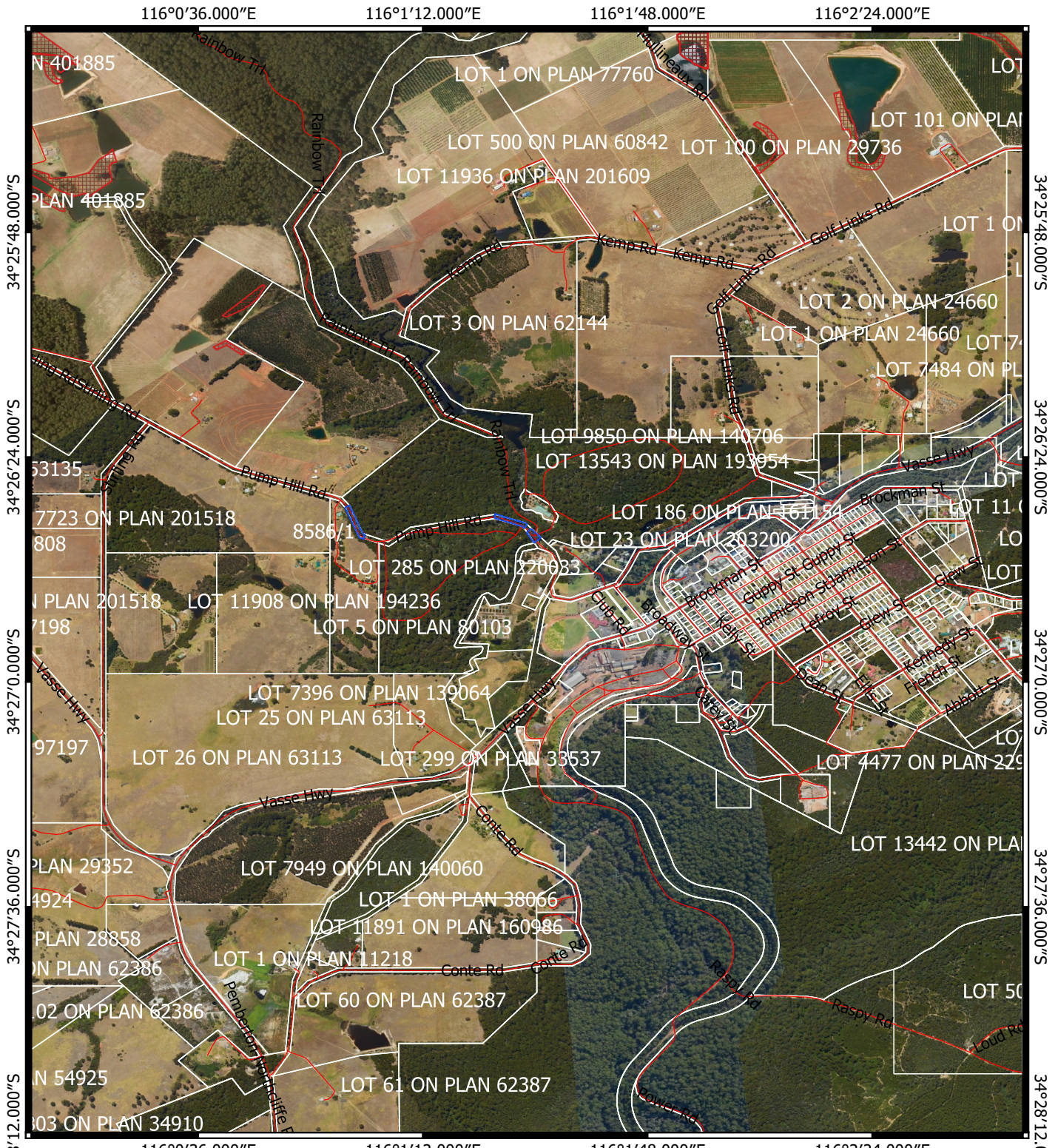






CPS 8586/1 - Context Map



Legend

-  Cadastre
-  CPS areas applied to clear
-  Local Government Authorities
-  Road Centrelines



0 250 500 750 1000 1250 1500 m



Officer delegated under section 20 of the
Environmental Protection Act 1986



GOVERNMENT OF
WESTERN AUSTRALIA